

Converting Colors

HunterLab(70.6309, 5.4973,
5.0339)

Have a look what the booklet for
HunterLab(70.6309, 5.4973, 5.0339)
contains.

HunterLab(70.5804, 5.4976, 5.0308)	3
<i>Conversions</i>	4
<i>Details</i>	6
<i>Harmonies</i>	12
<i>Previews</i>	24
<i>Color Blindness Simulation</i>	28
<i>CSS Examples</i>	31

Color

**HunterLab(70.5804, 5.4976,
5.0308)**

Conversions

Conversions Part 1

Format	Color
Hex	CFB5B9
RGB	207, 181, 185
RGB Percent	81%, 71%, 73%
CMY	0.1882, 0.2902, 0.2745
CMYK	0.00, 0.13, 0.11, 0.19
HSL	351°, 21%, 76%
HSV	351°, 13%, 81%
XYZ	51.0129, 49.8159, 52.8258
YIQ	189.2300, 14.2120, 6.7560

Conversions

Conversions Part 2

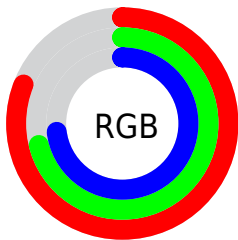
Format	Color
R _Y B	207, 181, 185
Decimal	13612473
CIE Lab	75.96, 9.97, 1.39
CIE LCh	76, 10.067, 7.951
Yxy	49.8181, 0.3320, 0.3242
Android (android.graphics.Color)	4291802553 (0xFFCFB5B9)
YUV	189.2300, -2.0854, 15.5843
Hunter-Lab	70.5804, 5.4976, 5.0308

Details

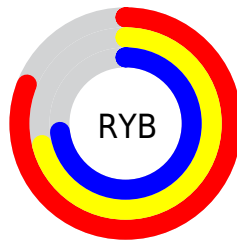
The HunterLab color $70.5804, 5.4976, 5.0308$ is a light color, and the websafe version is hex `CCCCCC`. A complement of this color would be $76.6566, -12.7138, 3.3109$, and the grayscale version is $71.4385, -3.8118, 3.8814$.

A 20% lighter version of the original color is $93.9038, 1.8080, 5.3510$, and $48.7644, 5.5621, 3.6041$ is the 20% darker color. If you saturate the color by 10%, you get $64.2814, 13.5100, 5.9094$, and if you desaturate by 10%, it is $77.2381, -2.2682, 4.4134$.

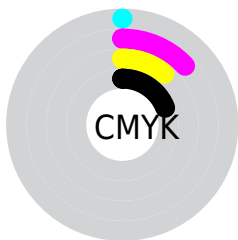
Distribution



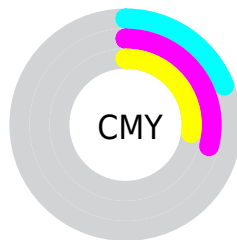
- Red (81%)
- Green (71%)
- Blue (73%)



- Red (81%)
- Yellow (71%)
- Blue (73%)



- Cyan (0%)
- Magenta (13%)
- Yellow (11%)
- Black (19%)




- Cyan (19%)
- Magenta (29%)
- Yellow (27%)

Brightness & Saturation Gradients

These gradients show how the HunterLab color 70.5804, 5.4976, 5.0308 changes by changing the brightness by 10 percent. The first figure shows a shift by +10% for each color and the second figure -10%.


Similar to the brightness gradients but the following saturation gradients show a change of the HunterLab color 70.5804, 5.4976, 5.0308 by changing the saturation by 10% instead.

 70.5804, 5.4976,
5.0308

 70.5804, 5.4976,
5.0308


196.4572, 2.3802,
12.3750

 59.3876, 5.6018,
4.3549

 94.8184, 5.1136,
6.4764

 48.8570, 5.6436,
3.7095


107.8017, 4.8471,
7.2414

 39.0350, 5.6126,
3.0974

121.3289, 4.5351,
8.0336

 29.9768, 5.4981,
2.5202

135.3788, 4.1804,
8.8522

 21.7534, 5.2846,
1.9795

149.9327, 3.7856,
9.6963

 14.4601, 4.9495,
1.4771

164.9737, 3.3527,

 8.1212, 4.9227,

10.5653

1.1528

180.4865, 2.8837,
11.4584

0.0000, NaN, NaN

0.0000, NaN, NaN

■ 70.5804, 5.4976,
5.0308

■ 70.5804, 5.4976,
5.0308

■ 64.2814, 13.5100,
5.9094

■ 77.2381, -2.2682,
4.4134

■ 58.4015, 21.7511,
7.0890

■ 84.1979, -9.7907,
4.0131

■ 53.0233, 30.1295,
8.6103

■ 91.4202, -17.0965,
3.7956

■ 48.2446, 38.4443,
10.4940

■ 95.9195, -19.8360,
0.2787

■ 44.1757, 46.3318,

12.7178

■ 40.9269, 53.2454,
15.1861

■ 38.5818, 58.5377,
17.7116

■ 37.1579, 61.6981,
20.0380

■ 36.5634, 62.8985,
21.4359

Harmonies

Analogous

The Analogous color harmony consists of three colors that are next to each other on the color wheel.



70.5820, 4.8874, 0.5054



70.5804, 5.4976, 5.0308



70.5820, 3.5698, 8.9739

Triad

The Triadic color harmony groups three colors that are evenly spaced from another and form a triangle on the color wheel.



70.5820, 5.4955, 5.0320



70.5820, -9.2937, 10.3490



70.5820, -7.1625, -4.6853

Complementary

The Complementary color scheme is a pair of colors which are on the opposite of each other on the color wheel.



70.5804, 5.4976, 5.0308



76.6566, -12.7138, 3.3109

Split Complementary

Split-complementary colors differ from the complementary color scheme. The scheme consists of three colors, the original color and two neighbors of the complement color.



70.5820, -10.8213, -1.7068



70.5804, 5.4976, 5.0308



70.5820, -12.0289, 7.0232

Square

The Square scheme is like the rectangle color scheme, but the four colors are evenly spaced on the color wheel.



70.5820, 5.4955, 5.0320



70.5820, -5.0275, 11.9086



70.5820, -12.5807, 2.6309



70.5820, -2.5034, -5.3058

Rectangle

The Rectangle color scheme consists of four colors that form a rectangle on the color wheel.



70.5804, 5.4976, 5.0308



70.5820, 1.1373, 10.8097



70.5820, -12.5807, 2.6309



70.5820, -8.5465, -3.9176

Sweetspot

The Sweet Spot groups the original color and five complimentary colors.



70.5820, 5.4955, 5.0320



96.4989, -1.4269, 5.6852



70.8553, 7.8232, -5.5988



44.3434, -0.3174, 2.6545

0.0000, NaN, NaN



46.2646, -2.4686, 2.5136

Same Dimension

The Same Dimension uses a secret algorithm to generate beautiful new colors.



70.5820, 5.4955, 5.0320



87.2151, 9.5880, 6.6277



72.9974, 0.4258, 9.4788



34.4056, 1.4341, 2.2791



29.0376, 49.9826, 16.7876



6.9359, 12.0760, 2.9456

Inverse Universe

The Inverse Universe completely reimagines the original color for something new.



70.5820, 5.4955, 5.0320



87.2151, 9.5880, 6.6277



74.0750, -7.7221, -1.7400



34.4056, 1.4341, 2.2791



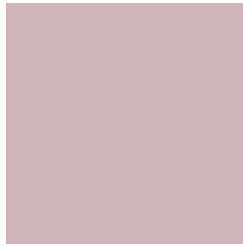
29.0376, 49.9826, 16.7876



6.9359, 12.0760, 2.9456

Previews

White Background



This preview shows how the HunterLab color 70.5804, 5.4976, 5.0308 looks on a white background.

Color Contrast Check

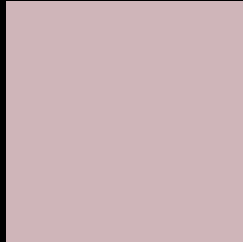
Large Text (above 18pt) WCAG AA × Fail

Any Text WCAG AA × Fail

Large Text (above 18pt) WCAG AAA × Fail

Any Text WCAG AAA × Fail

Black Background



This preview shows how the HunterLab color 70.5804, 5.4976, 5.0308 looks on a black background.

Color Contrast Check

Large Text (above 18pt) WCAG AA ✓ Pass

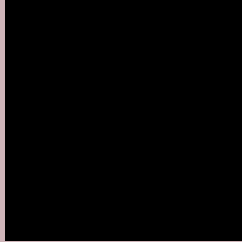
Any Text WCAG AA ✓ Pass

Large Text (above 18pt) WCAG AAA ✓ Pass

Any Text WCAG AAA ✓ Pass

If you want to check with other color combinations, try the [Color Contrast Checker](#).

HunterLab 70.5804, 5.4976, 5.0308 Background



This preview shows how black text looks on a background with the HunterLab color 70.5804, 5.4976, 5.0308.



This preview shows how white text looks on a background with the HunterLab color 70.5804, 5.4976,

Color Blindness Simulation

Color vision deficiency is a very complex topic, and I could not describe the different causes any better than Wikipedia does, so if you want to learn more, you should check out their [article about color blindness](#).

Dichromacy



Original Color

70.5804, 5.4976, 5.0308

Protanopia

70.4952, -2.1527, 3.3866

Deuteranopia

70.4786, 5.1567, 4.9065



Tritanopia

70.6735, 7.8377, 0.8679

Trichromacy



Original Color

70.5804, 5.4976, 5.0308

Protanomaly

70.4305, 0.6162, 3.8326

Deuteranomaly

70.4786, 5.1567, 4.9065

Tritanomaly

70.5790, 7.3353, 2.2126

Monochromacy



Original Color

70.5804, 5.4976, 5.0308

Achromatopsia

71.3359, -3.8063, 3.8758

Achromatomaly

71.0524, -0.2351, 4.0772

CSS Examples

Text

The CSS property to change the color of the text to HunterLab 70.5804, 5.4976, 5.0308 is called "color". The color property can be set on classes, ids or directly on the HTML element.

This example shows how text in the color `rgb(207, 181, 185)` looks like.

```
.text, #text, p{  
    color:rgb(207, 181, 185)  
}
```

If you want to add a text shadow in that color use the text-shadow property, you can generate a text shadow directly with our [CSS Text Shadow Generator](#).

Here you see how black text with a 4 pixel rgb(207, 181, 185) colored shadow looks like.

```
.shadow{ text-shadow: 4px 4px 2px rgb(207, 181, 185) }
```

Border

The CSS property to change the border of an element to HunterLab 70.5804, 5.4976, 5.0308 is called "border".

The border property can be set on classes, ids or directly on the HTML element.

This example shows the color as border, it can be applied via the CSS property "border" or "border-color".

```
.border, #border, table{ border:4px solid rgb(207, 181, 185) }
```


If only the border color should be changed use the property `border-color`.

```
.border{ border-color:rgb(207, 181, 185) }
```

If you want to add a box shadow in that color use:

Here you see how a box with a 4 pixel `rgb(207, 181, 185)` colored shadow looks like.

```
.boxshadow{ -moz-box-shadow:4px 4px 4px  
4px rgb(207, 181, 185); -webkit-box-  
shadow:4px 4px 4px 4px rgb(207, 181, 185);  
box-shadow:4px 4px 4px 4px rgb(207, 181,  
185) }
```

Background

The CSS property to change the background color of an element to HunterLab 70.5804, 5.4976, 5.0308 is called "background". The background property can be set on classes, ids or directly on the HTML element.

```
.background, #background, body{  
background: rgb(207, 181, 185) }
```

If only the background color should be changed can be used:

```
.background{ background-color: rgb(207,  
181, 185) }
```

This example shows the color as background, it is applied via the CSS property "background".

To optimize and compress your CSS code, you can use our [online CSS compressor and optimizer](#) based on csstidy. If you want to create a linear or radial gradient as background or border, check our [CSS Gradient Generator](#).

Hey! You found this booklet interesting? Support Converting Colors with the new Membership Option!

The pro membership hides all ads, plus gives you double the colors in the color bucket, and more awesome pro features!

[Learn more, Memberships starting at \\$2.50/m!](#)

**Follow me
on Twitter!**

@ConvertingColor