

# Converting Colors

HunterLab(70.6393, 9.4188,  
12.5229)

Have a look what the booklet for  
HunterLab(70.6393, 9.4188,  
12.5229) contains.

<b>HunterLab(70.7390, 9.4579, 12.7047)</b> .....	3
<b><i>Conversions</i></b> .....	4
<b><i>Details</i></b> .....	6
<b><i>Harmonies</i></b> .....	12
<b><i>Previews</i></b> .....	24
<b><i>Color Blindness Simulation</i></b> .....	28
<b><i>CSS Examples</i></b> .....	31

# Color

**HunterLab(70.7390, 9.4579,  
12.7047)**

# Conversions

## Conversions Part 1

<b>Format</b>	<b>Color</b>
Hex	DDB2A8
RGB	221, 178, 168
RGB Percent	87%, 70%, 66%
CMY	0.1333, 0.3019, 0.3412
CMYK	0.00, 0.19, 0.24, 0.13
HSL	11°, 44%, 76%
HSV	11°, 24%, 87%
XYZ	52.8070, 50.0401, 43.9212
YIQ	189.7170, 28.8380, 6.0060

# Conversions

## Conversions Part 2

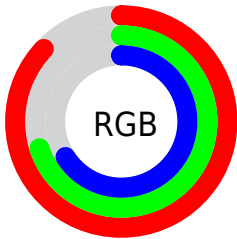
<b>Format</b>	<b>Color</b>
R <sub>Y</sub> B	221, 180, 168
Decimal	14529192
CIE Lab	76.10, 14.08, 11.01
CIE LCh	76, 17.876, 38.011
Yxy	50.0424, 0.3598, 0.3410
Android (android.graphics.Color)	4292719272 (0xFFDDB2A8)
YUV	189.7170, -10.7065, 27.4352
Hunter-Lab	70.7390, 9.4579, 12.7047

# Details

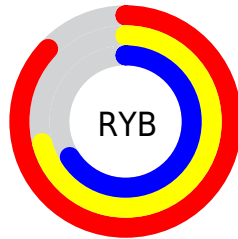
The HunterLab color  $70.7390, 9.4579, 12.7047$  is a light color, and the websafe version is hex  $CC9999$ . A complement of this color would be  $77.5448, -14.8697, -4.7807$ , and the grayscale version is  $71.6748, -3.8244, 3.8942$ .

A 20% lighter version of the original color is  $92.4302, 0.4324, 12.1812$ , and  $48.9158, 9.2859, 10.2770$  is the 20% darker color. If you saturate the color by 10%, you get  $65.2785, 15.8773, 15.8394$ , and if you desaturate by 10%, it is  $76.5143, 3.3893, 9.4133$ .

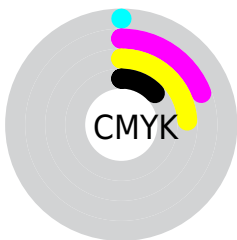
# Distribution



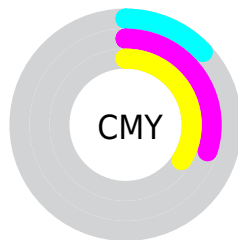
- Red (87%)
- Green (70%)
- Blue (66%)



- Red (87%)
- Yellow (71%)
- Blue (66%)



- Cyan (0%)
- Magenta (19%)
- Yellow (24%)
- Black (13%)




- Cyan (13%)
- Magenta (30%)
- Yellow (34%)

# Brightness & Saturation Gradients

These gradients show how the HunterLab color 70.7390, 9.4579, 12.7047 changes by changing the brightness by 10 percent. The first figure shows a shift by +10% for each color and the second figure -10%.

Similar to the brightness gradients but the following saturation gradients show a change of the HunterLab color 70.7390, 9.4579, 12.7047 by changing the saturation by 10% instead.




 70.7390, 9.4579,  
12.7047

 70.7390, 9.4579,  
12.7047


196.6803, 7.7830,  
23.5993

 59.5374, 9.3681,  
11.5294


 94.9935, 9.4353,  
15.0645

 48.9974, 9.2062,  
10.3488

 107.9844, 9.3390,  
16.2526

 39.1652, 8.9598,  
9.1569


121.5189, 9.1911,  
17.4494

 30.0961, 8.6161,  
7.9423

135.5759, 8.9949,  
18.6561

 21.8606, 8.1572,  
6.6869

150.1366, 8.7536,  
19.8737

 14.5537, 7.5582,  
5.3580

165.1842, 8.4698,

 8.2145, 7.2128,

21.1031

5.7502

180.7034, 8.1456,  
22.3448

0.0000, NaN, NaN

0.0000, NaN, NaN

■ 70.7390, 9.4579,  
12.7047

■ 70.7390, 9.4579,  
12.7047

■ 65.2785, 15.8773,  
15.8394

■ 76.5143, 3.3893,  
9.4133

■ 60.1770, 22.6530,  
18.7545

■ 82.5586, -2.3418,  
6.0035

■ 55.4943, 29.7380,  
21.3687

■ 88.8400, -7.7690,  
2.5051

■ 51.2970, 37.0189,  
23.5742

■ 95.2832, -13.1912,  
-0.3876

■ 47.6570, 44.2833,

■ 97.0114, -15.8938,

25.2436

1.6788

■ 44.6441, 51.2006,  
26.2524

■ 42.3126, 57.3383,  
26.5287

■ 41.2409, 60.4317,  
26.4704

# Harmonies

## Analogous

The Analogous color harmony consists of three colors that are next to each other on the color wheel.



70.7406, 13.0044, 5.9667



70.7390, 9.4579, 12.7047



70.7406, 2.3956, 16.7118

# Triad

The Triadic color harmony groups three colors that are evenly spaced from another and form a triangle on the color wheel.



70.7406, 9.4554, 12.7058



70.7406, -18.1941, 9.3858



70.7406, -1.5043, -13.1892

# Complementary

The Complementary color scheme is a pair of colors which are on the opposite of each other on the color wheel.



70.7390, 9.4579, 12.7047



77.5448, -14.8697, -4.7807

# Split Complementary

Split-complementary colors differ from the complementary color scheme. The scheme consists of three colors, the original color and two neighbors of the complement color.



70.7406, -9.7475, -11.9967



70.7390, 9.4579, 12.7047



70.7406, -19.1291, 1.6670

# Square

The Square scheme is like the rectangle color scheme, but the four colors are evenly spaced on the color wheel.



70.7406, 9.4554, 12.7058



70.7406, -13.4891, 14.9571



70.7406, -16.1055, -6.3217



70.7406, 6.4862, -9.4118



# Rectangle

The Rectangle color scheme consists of four colors that form a rectangle on the color wheel.



70.7390, 9.4579, 12.7047



70.7406, -3.2148, 17.5962



70.7406, -16.1055, -6.3217



70.7406, -4.3401, -13.3638

# Sweetspot

The Sweet Spot groups the original color and five complimentary colors.



70.7406, 9.4554, 12.7058



94.8734, -0.7216, 8.3056



69.3508, 21.7826, -9.7322



43.6913, -0.1459, 3.9560

0.0000, NaN, NaN



46.2646, -2.4686, 2.5136



# Same Dimension

The Same Dimension uses a secret algorithm to generate beautiful new colors.



70.7406, 9.4554, 12.7058



79.7700, 15.0326, 16.9046



78.4146, -3.9868, 20.2378



36.6705, 0.3426, 3.6439



31.6272, 45.4443, 20.2841



8.7556, 9.4734, 5.5610



# Inverse Universe

The Inverse Universe completely reimagines the original color for something new.



77.5448, -14.8697, -4.7807



89.4341, -19.6218, -7.9544



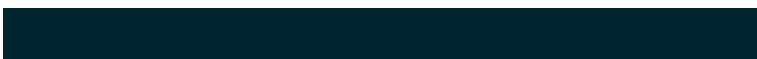
69.3925, -1.8141, -15.7203



37.9340, -4.1534, 0.4011



46.8879, -17.1162, -21.6569

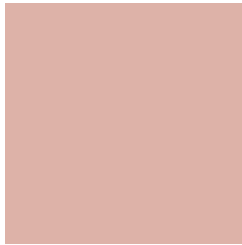


12.3868, -4.9592, -4.7768



# Previews

## White Background



This preview shows how the HunterLab color 70.7390, 9.4579, 12.7047 looks on a white background.

## Color Contrast Check

Large Text (above 18pt) WCAG AA × Fail

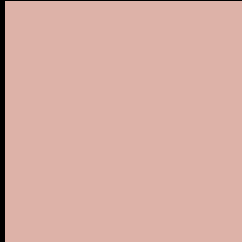
Any Text WCAG AA × Fail

Large Text (above 18pt) WCAG AAA × Fail

Any Text WCAG AAA × Fail



# Black Background



This preview shows how the HunterLab color 70.7390, 9.4579, 12.7047 looks on a black background.

## Color Contrast Check

Large Text (above 18pt) WCAG AA ✓ Pass

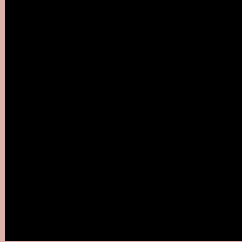
Any Text WCAG AA ✓ Pass

Large Text (above 18pt) WCAG AAA ✓ Pass

Any Text WCAG AAA ✓ Pass

If you want to check with other color combinations, try the [Color Contrast Checker](#).

## HunterLab 70.7390, 9.4579, 12.7047 Background



This preview shows how black text looks on a background with the HunterLab color 70.7390, 9.4579, 12.7047.



This preview shows how white text looks on a background with the HunterLab color 70.7390, 9.4579,



# Color Blindness Simulation

Color vision deficiency is a very complex topic, and I could not describe the different causes any better than Wikipedia does, so if you want to learn more, you should check out their [article about color blindness](#).

## Dichromacy



### Original Color

70.7390, 9.4579, 12.7047

### Protanopia

70.8236, -3.4214, 10.4844

### Deuteranopia

70.6993, 4.8871, 12.9908



## Tritanopia

70.6957, 14.7447, 3.9193

# Trichromacy



## Original Color

70.7390, 9.4579, 12.7047

## Protanomaly

70.7521, 0.7971, 11.3247

## Deuteranomaly

70.7329, 6.4724, 13.0538

## Tritanomaly

70.6516, 12.7646, 7.0726

# Monochromacy



## Original Color

70.7390, 9.4579, 12.7047

## Achromatopsia

71.7578, -3.8288, 3.8987

## Achromatomaly

71.3531, 0.4387, 7.2012

# CSS Examples

## Text

The CSS property to change the color of the text to HunterLab 70.7390, 9.4579, 12.7047 is called "color". The color property can be set on classes, ids or directly on the HTML element.

This example shows how text in the color `rgb(221, 178, 168)` looks like.

```
.text, #text, p{  
    color:rgb(221, 178, 168)  
}
```

If you want to add a text shadow in that color use the text-shadow property, you can generate a text shadow directly with our [CSS Text Shadow Generator](#).

Here you see how black text with a 4 pixel rgb(221, 178, 168) colored shadow looks like.

```
.shadow{ text-shadow: 4px 4px 2px rgb(221, 178, 168) }
```

## Border

The CSS property to change the border of an element to HunterLab 70.7390, 9.4579, 12.7047 is called "border". The border property can be set on classes, ids or directly on the HTML element.

This example shows the color as border, it can be applied via the CSS property "border" or "border-color".

```
.border, #border, table{ border:4px solid rgb(221, 178, 168) }
```



If only the border color should be changed use the property `border-color`.

```
.border{ border-color:rgb(221, 178, 168) }
```

If you want to add a box shadow in that color use:

Here you see how a box with a 4 pixel `rgb(221, 178, 168)` colored shadow looks like.

```
.boxshadow{ -moz-box-shadow:4px 4px 4px 4px rgb(221, 178, 168); -webkit-box-shadow:4px 4px 4px 4px rgb(221, 178, 168); box-shadow:4px 4px 4px 4px rgb(221, 178, 168) }
```

# Background

The CSS property to change the background color of an element to HunterLab 70.7390, 9.4579, 12.7047 is called "background". The background property can be set on classes, ids or directly on the HTML element.

```
.background, #background, body{  
background: rgb(221, 178, 168) }
```

If only the background color should be changed can be used:

```
.background{ background-color: rgb(221,  
178, 168) }
```

This example shows the color as background, it is applied via the CSS property "background".

To optimize and compress your CSS code, you can use our [online CSS compressor and optimizer](#) based on csstidy. If you want to create a linear or radial gradient as background or border, check our [CSS Gradient Generator](#).

Hey! You found this booklet interesting? Support Converting Colors with the new Membership Option!

The pro membership hides all ads, plus gives you double the colors in the color bucket, and more awesome pro features!

**[Learn more, Memberships starting at \\$2.50/m!](#)**

**Follow me  
on Twitter!**

@ConvertingColor