

Converting Colors

HunterLab(70.6874, 5.0253,
5.7569)

Have a look what the booklet for
HunterLab(70.6874, 5.0253, 5.7569)
contains.

HunterLab(70.8392, 4.8223, 5.7810)	3
<i>Conversions</i>	4
<i>Details</i>	6
<i>Harmonies</i>	12
<i>Previews</i>	24
<i>Color Blindness Simulation</i>	28
<i>CSS Examples</i>	31

Color

**HunterLab(70.8392, 4.8223,
5.7810)**

Conversions

Conversions Part 1

Format	Color
Hex	CFB6B8
RGB	207, 182, 184
RGB Percent	81%, 71%, 72%
CMY	0.1882, 0.2863, 0.2784
CMYK	0.00, 0.12, 0.11, 0.19
HSL	355°, 21%, 76%
HSV	355°, 12%, 81%
XYZ	51.1117, 50.1819, 52.3396
YIQ	189.7030, 14.2580, 5.9220

Conversions

Conversions Part 2

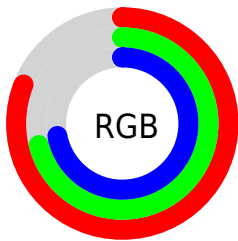
Format	Color
R _Y B	207, 182, 184
Decimal	13612728
CIE Lab	76.18, 9.26, 2.26
CIE LCh	76, 9.536, 13.730
Yxy	50.1841, 0.3327, 0.3266
Android (android.graphics.Color)	4291802808 (0xFFCFB6B8)
YUV	189.7030, -2.8116, 15.1695
Hunter-Lab	70.8392, 4.8223, 5.7810

Details

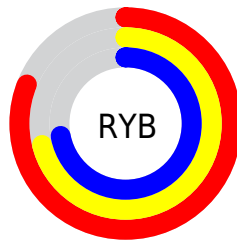
The HunterLab color **70.8392, 4.8223, 5.7810** is a light color, and the websafe version is hex **CCCCCC**. A complement of this color would be **76.7982, -12.0808, 2.5189**, and the grayscale version is **71.6410, -3.8226, 3.8924**.

A 20% lighter version of the original color is **94.1809, 1.1023, 6.1556**, and **49.0047, 4.9252, 4.3032** is the 20% darker color. If you saturate the color by 10%, you get **64.4801, 12.6131, 7.2411**, and if you desaturate by 10%, it is **77.5579, -2.6903, 4.5287**.

Distribution



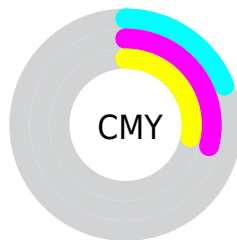
- Red (81%)
- Green (71%)
- Blue (72%)



- Red (81%)
- Yellow (71%)
- Blue (72%)



- Cyan (0%)
- Magenta (12%)
- Yellow (11%)
- Black (19%)




- Cyan (19%)
- Magenta (29%)
- Yellow (28%)

Brightness & Saturation Gradients


These gradients show how the HunterLab color 70.8392, 4.8223, 5.7810 changes by changing the brightness by 10 percent. The first figure shows a shift by +10% for each color and the second figure -10%.


Similar to the brightness gradients but the following saturation gradients show a change of the HunterLab color 70.8392, 4.8223, 5.7810 by changing the saturation by 10% instead.


 70.8392, 4.8223,
5.7810

 70.8392, 4.8223,
5.7810

196.8211, 1.4454,
13.4405

 59.6320, 4.9617,
5.0614


 95.1040, 4.3728,
7.3070

 49.0860, 5.0407,
4.3696


108.0997, 4.0756,
8.1095

 39.2475, 5.0494,
3.7074


121.6388, 3.7341,
8.9376

 30.1714, 4.9774,
3.0757

135.7002, 3.3509,
9.7907

 21.9284, 4.8100,
2.4746

150.2653, 2.9285,
10.6681

 14.6129, 4.5256,
1.9034

165.3170, 2.4690,

 8.2729, 4.4479,

11.5693

1.5844

180.8403, 1.9741,
12.4936

0.0000, NaN, NaN

0.0000, NaN, NaN

■ 70.8392, 4.8223,
5.7810

■ 70.8392, 4.8223,
5.7810

■ 64.4801, 12.6131,
7.2411

■ 77.5579, -2.6903,
4.5287

■ 58.5417, 20.6753,
8.9315

■ 84.5793, -9.9360,
3.4526

■ 53.1076, 28.9318,
10.8682

■ 91.8638, -16.9473,
2.5270

■ 48.2771, 37.1985,
13.0392

■ 95.9195, -19.8360,
0.2787

■ 44.1629, 45.1270,

15.3832

■ 40.8786, 52.1776,
17.7656

■ 38.5114, 57.6919,
19.9766

■ 37.0816, 61.1269,
21.7770

■ 36.4754, 62.5722,
22.7402

Harmonies

Analogous

The Analogous color harmony consists of three colors that are next to each other on the color wheel.



70.8408, 4.7163, 1.5107



70.8392, 4.8223, 5.7810



70.8408, 2.5786, 9.3137

Triad

The Triadic color harmony groups three colors that are evenly spaced from another and form a triangle on the color wheel.



70.8408, 4.8202, 5.7822



70.8408, -9.6669, 9.5504



70.8408, -6.1919, -4.5102

Complementary

The Complementary color scheme is a pair of colors which are on the opposite of each other on the color wheel.



70.8392, 4.8223, 5.7810



76.7982, -12.0808, 2.5189

Split Complementary

Split-complementary colors differ from the complementary color scheme. The scheme consists of three colors, the original color and two neighbors of the complement color.



70.8408, -9.9291, -2.0737



70.8392, 4.8223, 5.7810



70.8408, -11.9009, 6.1238

Square

The Square scheme is like the rectangle color scheme, but the four colors are evenly spaced on the color wheel.



70.8408, 4.8202, 5.7822



70.8408, -5.8259, 11.3958



70.8408, -11.9956, 1.8743



70.8408, -1.7181, -4.6159

Rectangle

The Rectangle color scheme consists of four colors that form a rectangle on the color wheel.



70.8392, 4.8223, 5.7810



70.8408, 0.0873, 10.8478



70.8408, -11.9956, 1.8743



70.8408, -7.5733, -3.9300

Sweetspot

The Sweet Spot groups the original color and five complimentary colors.



70.8408, 4.8202, 5.7822



96.4749, -1.5573, 6.0274



71.3655, 8.0387, -4.9275



44.3303, -0.3889, 2.8422

0.0000, NaN, NaN



46.2646, -2.4686, 2.5136

Same Dimension

The Same Dimension uses a secret algorithm to generate beautiful new colors.



70.8408, 4.8202, 5.7822



87.9555, 8.1382, 7.6840



73.8424, -0.8208, 9.9506



34.3851, 1.3237, 2.5718



28.9621, 49.7027, 17.9060



6.8881, 11.8997, 3.6473

Inverse Universe

The Inverse Universe completely reimagines the original color for something new.



70.8408, 4.8202, 5.7822



87.9555, 8.1382, 7.6840



73.6175, -6.5594, -2.2952



34.3851, 1.3237, 2.5718



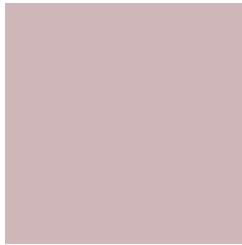
28.9621, 49.7027, 17.9060



6.8881, 11.8997, 3.6473

Previews

White Background



This preview shows how the HunterLab color 70.8392, 4.8223, 5.7810 looks on a white background.

Color Contrast Check

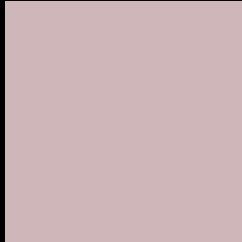
Large Text (above 18pt) WCAG AA × Fail

Any Text WCAG AA × Fail

Large Text (above 18pt) WCAG AAA × Fail

Any Text WCAG AAA × Fail

Black Background



This preview shows how the HunterLab color 70.8392, 4.8223, 5.7810 looks on a black background.

Color Contrast Check

Large Text (above 18pt) WCAG AA ✓ Pass

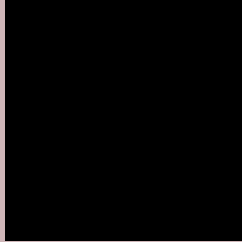
Any Text WCAG AA ✓ Pass

Large Text (above 18pt) WCAG AAA ✓ Pass

Any Text WCAG AAA ✓ Pass

If you want to check with other color combinations, try the [Color Contrast Checker](#).

HunterLab 70.8392, 4.8223, 5.7810 Background



This preview shows how black text looks on a background with the HunterLab color 70.8392, 4.8223, 5.7810.



This preview shows how white text looks on a background with the HunterLab color 70.8392, 4.8223,

Color Blindness Simulation

Color vision deficiency is a very complex topic, and I could not describe the different causes any better than Wikipedia does, so if you want to learn more, you should check out their [article about color blindness](#).

Dichromacy



Original Color

70.8392, 4.8223, 5.7810

Protanopia

70.8554, -2.5057, 4.2770

Deuteranopia

70.9412, 5.1642, 5.9043



Tritanopia

70.6735, 7.8377, 0.8679

Trichromacy



Original Color

70.8392, 4.8223, 5.7810

Protanomaly

70.7908, 0.2699, 4.7184

Deuteranomaly

70.9412, 5.1642, 5.9043

Tritanomaly

70.8346, 6.6503, 2.9887

Monochromacy



Original Color

70.8392, 4.8223, 5.7810

Achromatopsia

71.7578, -3.8288, 3.8987

Achromatomaly

71.3493, -0.7423, 4.4165

CSS Examples

Text

The CSS property to change the color of the text to HunterLab 70.8392, 4.8223, 5.7810 is called "color". The color property can be set on classes, ids or directly on the HTML element.

This example shows how text in the color `rgb(207, 182, 184)` looks like.

```
.text, #text, p{  
    color:rgb(207, 182, 184)  
}
```

If you want to add a text shadow in that color use the text-shadow property, you can generate a text shadow directly with our [CSS Text Shadow Generator](#).

Here you see how black text with a 4 pixel rgb(207, 182, 184) colored shadow looks like.

```
.shadow{ text-shadow: 4px 4px 2px rgb(207, 182, 184) }
```

Border

The CSS property to change the border of an element to HunterLab 70.8392, 4.8223, 5.7810 is called "border". The border property can be set on classes, ids or directly on the HTML element.

This example shows the color as border, it can be applied via the CSS property "border" or "border-color".

```
.border, #border, table{ border:4px solid rgb(207, 182, 184) }
```


If only the border color should be changed use the property `border-color`.

```
.border{ border-color:rgb(207, 182, 184) }
```

If you want to add a box shadow in that color use:

Here you see how a box with a 4 pixel `rgb(207, 182, 184)` colored shadow looks like.

```
.boxshadow{ -moz-box-shadow:4px 4px 4px  
4px rgb(207, 182, 184); -webkit-box-  
shadow:4px 4px 4px 4px rgb(207, 182, 184);  
box-shadow:4px 4px 4px 4px rgb(207, 182,  
184) }
```

Background

The CSS property to change the background color of an element to HunterLab 70.8392, 4.8223, 5.7810 is called "background". The background property can be set on classes, ids or directly on the HTML element.

```
.background, #background, body{  
background: rgb(207, 182, 184) }
```

If only the background color should be changed can be used:

```
.background{ background-color: rgb(207,  
182, 184) }
```

This example shows the color as background, it is applied via the CSS property "background".

To optimize and compress your CSS code, you can use our [online CSS compressor and optimizer](#) based on csstidy. If you want to create a linear or radial gradient as background or border, check our [CSS Gradient Generator](#).

Hey! You found this booklet interesting? Support Converting Colors with the new Membership Option!

The pro membership hides all ads, plus gives you double the colors in the color bucket, and more awesome pro features!

[Learn more, Memberships starting at \\$2.50/m!](#)

**Follow me
on Twitter!**

@ConvertingColor