

Converting Colors

HunterLab(70.7057, 4.9053,
20.5312)

Have a look what the booklet for
HunterLab(70.7057, 4.9053,
20.5312) contains.

HunterLab(70.5756, 4.9790, 20.3858)	3
<i>Conversions</i>	4
<i>Details</i>	6
<i>Harmonies</i>	12
<i>Previews</i>	24
<i>Color Blindness Simulation</i>	28
<i>CSS Examples</i>	31

Color

**HunterLab(70.5756, 4.9790,
20.3858)**

Conversions

Conversions Part 1

Format	Color
Hex	DBB493
RGB	219, 180, 147
RGB Percent	86%, 71%, 58%
CMY	0.1412, 0.2941, 0.4235
CMYK	0.00, 0.18, 0.33, 0.14
HSL	28°, 50%, 72%
HSV	28°, 33%, 86%
XYZ	50.8011, 49.8092, 34.5404
YIQ	187.8990, 33.8370, -1.9950

Conversions

Conversions Part 2

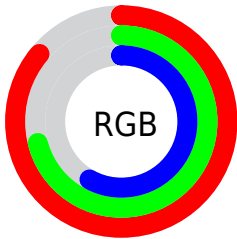
Format	Color
RYB	219, 208, 147
Decimal	14398611
CIELab	75.95, 9.42, 22.14
CIElCh	76, 24.060, 66.940
Yxy	49.8115, 0.3759, 0.3685
Android (android.graphics.Color)	4292588691 (0xFFDDBB493)
YUV	187.8990, -20.1632, 27.2756
Hunter-Lab	70.5756, 4.9790, 20.3858

Details

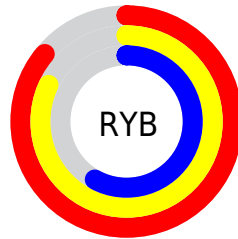
The HunterLab color **70.5756, 4.9790, 20.3858** is a light color, and the websafe version is hex **FFCC99**. A complement of this color would be **68.1424, -8.2415, -16.4668**, and the grayscale version is **70.9454, -3.7855, 3.8546**.

A 20% lighter version of the original color is **92.4489, -3.8887, 21.4598**, and **48.7953, 5.3482, 16.7146** is the 20% darker color. If you saturate the color by 10%, you get **66.7847, 8.6156, 24.0483**, and if you desaturate by 10%, it is **74.5397, 1.7092, 16.1427**.

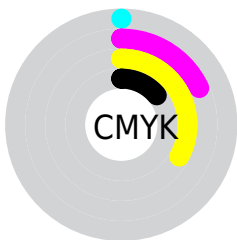
Distribution



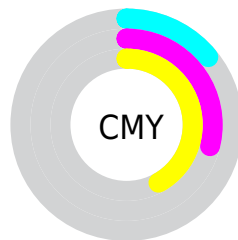
- Red (86%)
- Green (71%)
- Blue (58%)



- Red (86%)
- Yellow (82%)
- Blue (58%)



- Cyan (0%)
- Magenta (18%)
- Yellow (33%)
- Black (14%)




- Cyan (14%)
- Magenta (29%)
- Yellow (42%)

Brightness & Saturation Gradients

These gradients show how the HunterLab color 70.5756, 4.9790, 20.3858 changes by changing the brightness by 10 percent. The first figure shows a shift by +10% for each color and the second figure -10%.


Similar to the brightness gradients but the following saturation gradients show a change of the HunterLab color 70.5756, 4.9790, 20.3858 by changing the saturation by 10% instead.

 70.5756, 4.9790,
20.3858

 70.5756, 4.9790,
20.3858


196.4506, 1.6672,
35.6914

 59.3832, 5.1088,
18.5752

 94.8132, 4.5457,
23.8976

 48.8529, 5.1782,
16.7090

 107.7963, 4.2563,
25.6148

 39.0311, 5.1765,
14.7683

121.3232, 3.9222,
27.3149

 29.9733, 5.0932,
12.7244

135.3729, 3.5463,
29.0025

 21.7502, 4.9135,
10.5328

149.9266, 3.1308,
30.6812

 14.4573, 4.6152,
8.5809

164.9674, 2.6780,

 8.1184, 4.6265,

32.3541

5.6829

180.4800, 2.1896,
34.0235

0.0000, NaN, NaN

0.0000, NaN, NaN

■ 70.5756, 4.9790,
20.3858

■ 70.5756, 4.9790,
20.3858

■ 66.7847, 8.6156,
24.0483

■ 74.5397, 1.7092,
16.1427

■ 63.1788, 12.6431,
27.0598

■ 78.6571, -1.2083,
11.3793

■ 59.7774, 17.0642,
29.3532

■ 82.9158, -3.8014,
6.1539

■ 56.5996, 21.8674,
30.8675

■ 87.3040, -6.0963,
0.5172

■ 53.6645, 27.0161,

■ 91.7580, -8.4104,

31.5611

-4.7378

■ 50.9895, 32.4377,
31.4353

■ 95.5939, -14.5195,
-0.0280

■ 49.2435, 36.3725,
30.9804

■ 96.8504, -16.4721,
1.4733

Harmonies

Analogous

The Analogous color harmony consists of three colors that are next to each other on the color wheel.



70.5772, 14.5185, 15.2057



70.5756, 4.9790, 20.3858



70.5772, -6.3852, 21.4870

Triad

The Triadic color harmony groups three colors that are evenly spaced from another and form a triangle on the color wheel.



70.5772, 4.9764, 20.3868



70.5772, -24.1378, 1.2890



70.5772, 9.8194, -14.8302

Complementary

The Complementary color scheme is a pair of colors which are on the opposite of each other on the color wheel.



70.5756, 4.9790, 20.3858



68.1424, -8.2415, -16.4668

Split Complementary

Split-complementary colors differ from the complementary color scheme. The scheme consists of three colors, the original color and two neighbors of the complement color.



70.5772, -1.1153, -20.0077



70.5756, 4.9790, 20.3858



70.5772, -20.3665, -9.7963

Square

The Square scheme is like the rectangle color scheme, but the four colors are evenly spaced on the color wheel.



70.5772, 4.9764, 20.3868



70.5772, -22.7336, 11.4934



70.5772, -12.1094, -18.0335



70.5772, 17.4356, -4.7759

Rectangle

The Rectangle color scheme consists of four colors that form a rectangle on the color wheel.



70.5756, 4.9790, 20.3858



70.5772, -13.3799, 19.9452



70.5772, -12.1094, -18.0335



70.5772, 6.3841, -17.2654

Sweetspot

The Sweet Spot groups the original color and five complimentary colors.



70.5772, 4.9764, 20.3868



94.8513, -2.3327, 11.8403



62.8481, 27.9759, -4.9245



43.5538, -0.8701, 5.8751

0.0000, NaN, NaN



46.2646, -2.4686, 2.5136

Same Dimension

The Same Dimension uses a secret algorithm to generate beautiful new colors.



70.5772, 4.9764, 20.3868



80.9213, 8.6532, 27.1161



81.2229, -12.7367, 29.6759



37.4567, -0.9988, 4.5028



38.1998, 27.3228, 24.0169



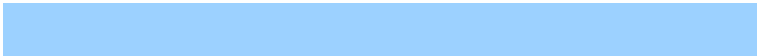
10.5657, 5.0120, 6.5983

Inverse Universe

The Inverse Universe completely reimagines the original color for something new.



68.1424, -8.2415, -16.4668



77.4897, -9.8916, -24.8119



57.7259, 9.7473, -33.0926



37.1211, -2.8350, -0.5782



33.2005, 4.1402, -50.4351



9.4114, -0.6176, -10.4301

Previews

White Background



This preview shows how the HunterLab color 70.5756, 4.9790, 20.3858 looks on a white background.

Color Contrast Check

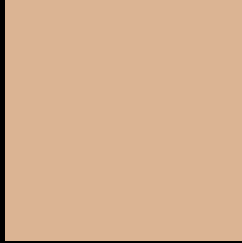
Large Text (above 18pt) WCAG AA × Fail

Any Text WCAG AA × Fail

Large Text (above 18pt) WCAG AAA × Fail

Any Text WCAG AAA × Fail

Black Background



This preview shows how the HunterLab color 70.5756, 4.9790, 20.3858 looks on a black background.

Color Contrast Check

Large Text (above 18pt) WCAG AA ✓ Pass

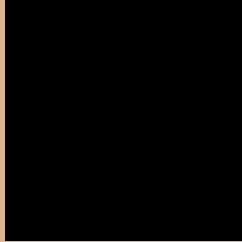
Any Text WCAG AA ✓ Pass

Large Text (above 18pt) WCAG AAA ✓ Pass

Any Text WCAG AAA ✓ Pass

If you want to check with other color combinations, try the [Color Contrast Checker](#).

HunterLab 70.5756, 4.9790, 20.3858 Background



This preview shows how black text looks on a background with the HunterLab color 70.5756, 4.9790, 20.3858.



This preview shows how white text looks on a background with the HunterLab color 70.5756, 4.9790,

Color Blindness Simulation

Color vision deficiency is a very complex topic, and I could not describe the different causes any better than Wikipedia does, so if you want to learn more, you should check out their [article about color blindness](#).

Dichromacy



Original Color

70.5756, 4.9790, 20.3858

Protanopia

70.6292, -5.2520, 19.2076

Deuteranopia

70.5756, 4.9790, 20.3858



Tritanopia

70.4208, 15.2745, 3.6035

Trichromacy



Original Color

70.5756, 4.9790, 20.3858

Protanomaly

70.4079, -1.4750, 19.4153

Deuteranomaly

70.5756, 4.9790, 20.3858

Tritanomaly

70.4254, 11.5767, 10.3145

Monochromacy



Original Color

70.5756, 4.9790, 20.3858

Achromatopsia

70.9145, -3.7838, 3.8529

Achromatomaly

70.6096, -1.0987, 10.2929

CSS Examples

Text

The CSS property to change the color of the text to HunterLab 70.5756, 4.9790, 20.3858 is called "color". The color property can be set on classes, ids or directly on the HTML element.

This example shows how text in the color `rgb(219, 180, 147)` looks like.

```
.text, #text, p{  
    color:rgb(219, 180, 147)  
}
```

If you want to add a text shadow in that color use the text-shadow property, you can generate a text shadow directly with our [CSS Text Shadow Generator](#).

Here you see how black text with a 4 pixel rgb(219, 180, 147) colored shadow looks like.

```
.shadow{ text-shadow: 4px 4px 2px rgb(219, 180, 147) }
```

Border

The CSS property to change the border of an element to HunterLab 70.5756, 4.9790, 20.3858 is called "border". The border property can be set on classes, ids or directly on the HTML element.

This example shows the color as border, it can be applied via the CSS property "border" or "border-color".

```
.border, #border, table{ border:4px solid rgb(219, 180, 147) }
```


If only the border color should be changed use the property `border-color`.

```
.border{ border-color:rgb(219, 180, 147) }
```

If you want to add a box shadow in that color use:

Here you see how a box with a 4 pixel `rgb(219, 180, 147)` colored shadow looks like.

```
.boxshadow{ -moz-box-shadow:4px 4px 4px  
4px rgb(219, 180, 147); -webkit-box-  
shadow:4px 4px 4px 4px rgb(219, 180, 147);  
box-shadow:4px 4px 4px 4px rgb(219, 180,  
147) }
```

Background

The CSS property to change the background color of an element to HunterLab 70.5756, 4.9790, 20.3858 is called "background". The background property can be set on classes, ids or directly on the HTML element.

```
.background, #background, body{  
background: rgb(219, 180, 147) }
```

If only the background color should be changed can be used:

```
.background{ background-color: rgb(219,  
180, 147) }
```

This example shows the color as background, it is applied via the CSS property "background".

To optimize and compress your CSS code, you can use our [online CSS compressor and optimizer](#) based on csstidy. If you want to create a linear or radial gradient as background or border, check our [CSS Gradient Generator](#).

Hey! You found this booklet interesting? Support Converting Colors with the new Membership Option!

The pro membership hides all ads, plus gives you double the colors in the color bucket, and more awesome pro features!

[Learn more, Memberships starting at \\$2.50/m!](#)

**Follow me
on Twitter!**

@ConvertingColor