

Converting Colors

HunterLab(70.8088, 2.1774,
13.8637)

Have a look what the booklet for
HunterLab(70.8088, 2.1774,
13.8637) contains.

HunterLab(70.8088, 2.1774, 13.8637)	3
<i>Conversions</i>	4
<i>Details</i>	6
<i>Harmonies</i>	12
<i>Previews</i>	24
<i>Color Blindness Simulation</i>	28
<i>CSS Examples</i>	31

Color

**HunterLab(70.8088, 2.1774,
13.8637)**

Conversions

Conversions Part 1

Format	Color
Hex	D1B7A5
RGB	209, 183, 165
RGB Percent	82%, 72%, 65%
CMY	0.1804, 0.2823, 0.3529
CMYK	0.00, 0.12, 0.21, 0.18
HSL	25°, 32%, 73%
HSV	25°, 21%, 82%
XYZ	50.0195, 50.1389, 42.6387
YIQ	188.7220, 21.2740, -0.0860

Conversions

Conversions Part 2

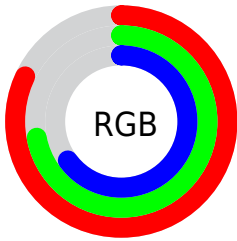
Format	Color
RYB	209, 195, 165
Decimal	13744037
CIELab	76.16, 6.46, 12.57
CIELCh	76, 14.129, 62.792
Yxy	50.1411, 0.3503, 0.3511
Android (android.graphics.Color)	4291934117 (0xFFD1B7A5)
YUV	188.7220, -11.6949, 17.7838
Hunter-Lab	70.8088, 2.1774, 13.8637

Details

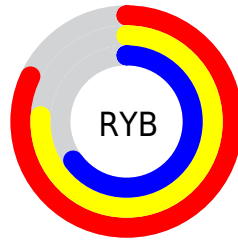
The HunterLab color **70.8088, 2.1774, 13.8637** is a light color, and the websafe version is hex **CCCCCC**. A complement of this color would be **70.6138, -8.1632, -7.2796**, and the grayscale version is **71.2614, -3.8023, 3.8718**.

A 20% lighter version of the original color is **93.8937, -2.6747, 15.0539**, and **49.0179, 2.6703, 11.3547** is the 20% darker color. If you saturate the color by 10%, you get **66.7597, 5.7219, 17.7678**, and if you desaturate by 10%, it is **75.0234, -1.0468, 9.5419**.

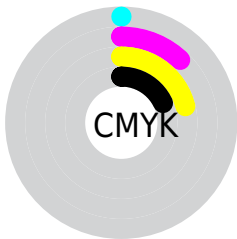
Distribution



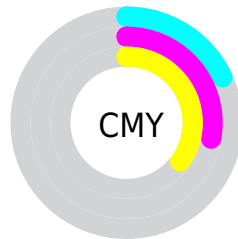
- Red (82%)
- Green (72%)
- Blue (65%)



- Red (82%)
- Yellow (76%)
- Blue (65%)



- Cyan (0%)
- Magenta (12%)
- Yellow (21%)
- Black (18%)



- Cyan (18%)
- Magenta (28%)
- Yellow (35%)

Brightness & Saturation Gradients

These gradients show how the HunterLab color 70.8088, 2.1774, 13.8637 changes by changing the brightness by 10 percent. The first figure shows a shift by +10% for each color and the second figure -10%.

Similar to the brightness gradients but the following saturation gradients show a change of the HunterLab color 70.8088, 2.1774, 13.8637 by changing the saturation by 10% instead.

70.8088, 2.1774,
13.8637

70.8088, 2.1774,
13.8637

196.7784, -2.2016,
25.3571

59.6033, 2.4523,
12.6029

95.0705, 1.4752,
16.3789

49.0591, 2.6746,
11.3304

108.0648, 1.0596,
17.6387

39.2225, 2.8358,
10.0383

121.6025, 0.6041,
18.9037

30.1486, 2.9271,
8.7131

135.6625, 0.1109,
20.1757

21.9078, 2.9368,
7.3327

150.2262, -0.4178,
21.4561

14.5949, 2.8467,
5.8586

165.2767, -0.9805,

8.2552, 2.9690,

22.7459

5.7786

180.7988, -1.5755,
24.0460

0.0000, NaN, NaN

0.0000, NaN, NaN

■ 70.8088, 2.1774,
13.8637

■ 70.8088, 2.1774,
13.8637

■ 66.7597, 5.7219,
17.7678

■ 75.0234, -1.0468,
9.5419

■ 62.8886, 9.6157,
21.1911

■ 79.3832, -3.9694,
4.8514

■ 59.2169, 13.8718,
24.0676

■ 83.8764, -6.6188,
-0.1618

■ 55.7664, 18.4931,
26.3262

■ 88.4914, -9.0204,
-5.4597

■ 52.5606, 23.4626,

■ 92.6964, -14.0983,

27.8973

-3.6402

■ 49.6240, 28.7336,
28.7249

■ 96.0705, -19.2881,
0.4733

■ 46.9801, 34.2185,
28.7872

■ 44.8715, 39.1616,
28.3352

Harmonies

Analogous

The Analogous color harmony consists of three colors that are next to each other on the color wheel.



70.8104, 7.3200, 10.1460



70.8088, 2.1774, 13.8637



70.8104, -4.4054, 14.9849

Triad

The Triadic color harmony groups three colors that are evenly spaced from another and form a triangle on the color wheel.



70.8104, 2.1751, 13.8647



70.8104, -16.1368, 3.2578



70.8104, 3.2954, -7.1825

Complementary

The Complementary color scheme is a pair of colors which are on the opposite of each other on the color wheel.



70.8088, 2.1774, 13.8637



70.6138, -8.1632, -7.2796

Split Complementary

Split-complementary colors differ from the complementary color scheme. The scheme consists of three colors, the original color and two neighbors of the complement color.



70.8104, -3.1566, -9.4397



70.8088, 2.1774, 13.8637



70.8104, -14.2396, -3.0733

Square

The Square scheme is like the rectangle color scheme, but the four colors are evenly spaced on the color wheel.



70.8104, 2.1751, 13.8647



70.8104, -14.8262, 9.2065



70.8104, -9.5486, -7.8713



70.8104, 7.9834, -1.9511

Rectangle

The Rectangle color scheme consists of four colors that form a rectangle on the color wheel.



70.8088, 2.1774, 13.8637



70.8104, -8.6800, 14.2005



70.8104, -9.5486, -7.8713



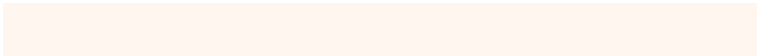
70.8104, 1.2527, -8.3350

Sweetspot

The Sweet Spot groups the original color and five complimentary colors.



70.8104, 2.1751, 13.8647



96.6545, -3.1798, 9.0763



66.5172, 15.6190, -2.8802



44.5501, -1.3589, 4.3783

0.0000, NaN, NaN



46.2646, -2.4686, 2.5136

Same Dimension

The Same Dimension uses a secret algorithm to generate beautiful new colors.



70.8104, 2.1751, 13.8647



86.5052, 4.5536, 19.5017



77.2942, -8.6606, 20.1706



35.4842, -0.7249, 4.1210



35.4930, 30.0831, 22.3973



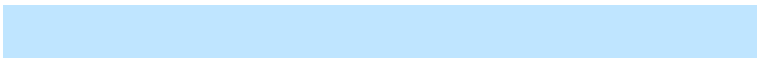
9.2672, 5.0132, 5.7982

Inverse Universe

The Inverse Universe completely reimagines the original color for something new.



70.6138, -8.1632, -7.2796



86.2091, -10.9085, -12.1354



64.1314, 2.6909, -16.2035



35.4429, -2.9201, -0.3658



34.4159, -0.0691, -42.8677



9.0350, -1.4768, -8.1051

Previews

White Background



This preview shows how the HunterLab color 70.8088, 2.1774, 13.8637 looks on a white background.

Color Contrast Check

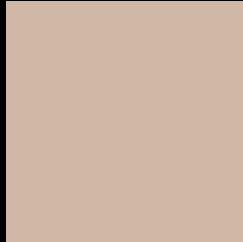
Large Text (above 18pt) WCAG AA × Fail

Any Text WCAG AA × Fail

Large Text (above 18pt) WCAG AAA × Fail

Any Text WCAG AAA × Fail

Black Background



This preview shows how the HunterLab color 70.8088, 2.1774, 13.8637 looks on a black background.

Color Contrast Check

Large Text (above 18pt) WCAG AA ✓ Pass

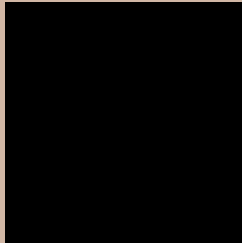
Any Text WCAG AA ✓ Pass

Large Text (above 18pt) WCAG AAA ✓ Pass

Any Text WCAG AAA ✓ Pass

If you want to check with other color combinations, try the [Color Contrast Checker](#).

HunterLab 70.8088, 2.1774, 13.8637 Background



This preview shows how black text looks on a background with the HunterLab color 70.8088, 2.1774, 13.8637.



This preview shows how white text looks on a background with the HunterLab color 70.8088, 2.1774,

Color Blindness Simulation

Color vision deficiency is a very complex topic, and I could not describe the different causes any better than Wikipedia does, so if you want to learn more, you should check out their [article about color blindness](#).

Dichromacy



Original Color

70.8088, 2.1774, 13.8637

Protanopia

70.7576, -3.9718, 12.8969

Deuteranopia

70.7534, 4.9651, 13.8550



Tritanopia

70.7725, 9.5633, 1.5107

Trichromacy



Original Color

70.8088, 2.1774, 13.8637

Protanomaly

70.9144, -1.9463, 13.5003

Deuteranomaly

70.8305, 3.7424, 13.9135

Tritanomaly

70.6472, 7.0766, 6.0586

Monochromacy



Original Color

70.8088, 2.1774, 13.8637

Achromatopsia

71.3359, -3.8063, 3.8758

Achromatomaly

71.1138, -2.0246, 7.7839

CSS Examples

Text

The CSS property to change the color of the text to HunterLab 70.8088, 2.1774, 13.8637 is called "color". The color property can be set on classes, ids or directly on the HTML element.

This example shows how text in the color `rgb(209, 183, 165)` looks like.

```
.text, #text, p{  
    color:rgb(209, 183, 165)  
}
```

If you want to add a text shadow in that color use the text-shadow property, you can generate a text shadow directly with our [CSS Text Shadow Generator](#).

Here you see how black text with a 4 pixel rgb(209, 183, 165) colored shadow looks like.

```
.shadow{ text-shadow: 4px 4px 2px rgb(209, 183, 165) }
```

Border

The CSS property to change the border of an element to HunterLab 70.8088, 2.1774, 13.8637 is called "border". The border property can be set on classes, ids or directly on the HTML element.

This example shows the color as border, it can be applied via the CSS property "border" or "border-color".

```
.border, #border, table{ border:4px solid rgb(209, 183, 165) }
```


If only the border color should be changed use the property border-color.

```
.border{ border-color:rgb(209, 183, 165) }
```

If you want to add a box shadow in that color use:

Here you see how a box with a 4 pixel rgb(209, 183, 165) colored shadow looks like.

```
.boxshadow{ -moz-box-shadow:4px 4px 4px  
4px rgb(209, 183, 165); -webkit-box-  
shadow:4px 4px 4px 4px rgb(209, 183, 165);  
box-shadow:4px 4px 4px 4px rgb(209, 183,  
165) }
```

Background

The CSS property to change the background color of an element to HunterLab 70.8088, 2.1774, 13.8637 is called "background". The background property can be set on classes, ids or directly on the HTML element.

```
.background, #background, body{  
background: rgb(209, 183, 165) }
```

If only the background color should be changed can be used:

```
.background{ background-color: rgb(209,  
183, 165) }
```

This example shows the color as background, it is applied via the CSS property "background".

To optimize and compress your CSS code, you can use our [online CSS compressor and optimizer](#) based on csstidy. If you want to create a linear or radial gradient as background or border, check our [CSS Gradient Generator](#).

Hey! You found this booklet interesting? Support Converting Colors with the new Membership Option!

The pro membership hides all ads, plus gives you double the colors in the color bucket, and more awesome pro features!

[Learn more, Memberships starting at \\$2.50/m!](#)

**Follow me
on Twitter!**

@ConvertingColor