

# Converting Colors

HunterLab(70.8174, 9.9033,  
11.5417)

Have a look what the booklet for  
HunterLab(70.8174, 9.9033,  
11.5417) contains.

<b>HunterLab(70.8189, 9.8805, 11.5554)</b> .....	3
<b><i>Conversions</i></b> .....	4
<b><i>Details</i></b> .....	6
<b><i>Harmonies</i></b> .....	12
<b><i>Previews</i></b> .....	24
<b><i>Color Blindness Simulation</i></b> .....	28
<b><i>CSS Examples</i></b> .....	31

# Color

**HunterLab(70.8189, 9.8805,  
11.5554)**

# Conversions

## Conversions Part 1

Format	Color
Hex	DDB2AB
RGB	221, 178, 171
RGB Percent	87%, 70%, 67%
CMY	0.1333, 0.3019, 0.3294
CMYK	0.00, 0.19, 0.23, 0.13
HSL	8°, 42%, 77%
HSV	8°, 23%, 87%
XYZ	53.0898, 50.1532, 45.4104
YIQ	190.0590, 27.8750, 6.9390

# Conversions

## Conversions Part 2

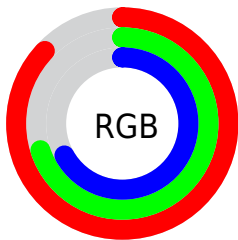
Format	Color
R <sub>Y</sub> B	221, 179, 171
Decimal	14529195
CIE Lab	76.16, 14.52, 9.48
CIE LCh	76, 17.337, 33.134
Yxy	50.1555, 0.3571, 0.3374
Android (android.graphics.Color)	4292719275 (0xFFDDB2AB)
YUV	190.0590, -9.3961, 27.1353
Hunter-Lab	70.8189, 9.8805, 11.5554

# Details

The HunterLab color **70.8189, 9.8805, 11.5554** is a light color, and the websafe version is hex **CC9999**. A complement of this color would be **78.7208, -15.5619, -3.2869**, and the grayscale version is **71.8141, -3.8318, 3.9018**.

A 20% lighter version of the original color is **92.5184, 0.9107, 10.9156**, and **48.9882, 9.6651, 9.2326** is the 20% darker color. If you saturate the color by 10%, you get **65.0659, 16.8130, 14.5156**, and if you desaturate by 10%, it is **76.9180, 3.2965, 8.5191**.

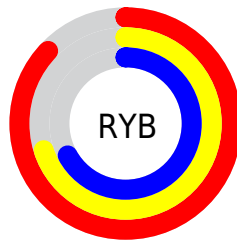
# Distribution



Red (87%)

Green (70%)

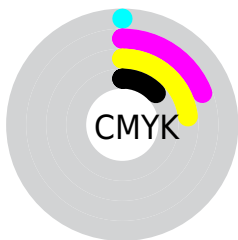
Blue (67%)



Red (87%)

Yellow (70%)

Blue (67%)

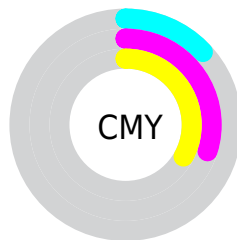


Cyan (0%)

Magenta (19%)

Yellow (23%)

Black (13%)



Cyan (13%)

Magenta (30%)


Yellow (33%)


# Brightness & Saturation Gradients

These gradients show how the HunterLab color 70.8189, 9.8805, 11.5554 changes by changing the brightness by 10 percent. The first figure shows a shift by +10% for each color and the second figure -10%.


Similar to the brightness gradients but the following saturation gradients show a change of the HunterLab color 70.8189, 9.8805, 11.5554 by changing the saturation by 10% instead.





 70.8189, 9.8805,  
11.5554

 70.8189, 9.8805,  
11.5554


196.7927, 8.3538,  
21.8682

 59.6129, 9.7710,  
10.4630


 95.0816, 9.8949,  
13.7643

 49.0681, 9.5884,  
9.3716


108.0764, 9.8160,  
14.8829

 39.2308, 9.3204,  
8.2768


121.6146, 9.6849,  
16.0133

 30.1562, 8.9536,  
7.1696


135.6751, 9.5051,  
17.1565

 21.9147, 8.4704,  
6.0356

150.2392, 9.2796,  
18.3131

 14.6009, 7.8457,  
4.8483

165.2902, 9.0111,

 8.2611, 7.4439,

19.4837

5.2047

180.8126, 8.7018,  
20.6686

0.0000, NaN, NaN

0.0000, NaN, NaN

■ 70.8189, 9.8805,  
11.5554

■ 70.8189, 9.8805,  
11.5554

■ 65.0659, 16.8130,  
14.5156

■ 76.9180, 3.2965,  
8.5191

■ 59.7115, 24.0908,  
17.3462

■ 83.3112, -2.9498,  
5.4346

■ 54.8261, 31.6466,  
19.9719

■ 89.9617, -8.8926,  
2.3218

■ 50.4888, 39.3275,  
22.2838

■ 96.6900, -15.3945,  
1.2973

■ 46.7846, 46.8569,

■ 97.0114, -15.8938,

24.1427

1.6788

■ 43.7943, 53.8189,  
25.3993

■ 41.5759, 59.7017,  
25.9480

■ 40.4352, 63.0314,  
26.0195

# Harmonies

## Analogous

The Analogous color harmony consists of three colors that are next to each other on the color wheel.



70.8205, 12.6196, 4.6682



70.8189, 9.8805, 11.5554



70.8205, 3.4676, 15.9473

# Triad

The Triadic color harmony groups three colors that are evenly spaced from another and form a triangle on the color wheel.



70.8205, 9.8780, 11.5565



70.8205, -17.2767, 10.2897



70.8205, -2.9205, -12.7744

# Complementary

The Complementary color scheme is a pair of colors which are on the opposite of each other on the color wheel.



70.8189, 9.8805, 11.5554



78.7208, -15.5619, -3.2869

# Split Complementary

Split-complementary colors differ from the complementary color scheme. The scheme consists of three colors, the original color and two neighbors of the complement color.



70.8205, -10.7524, -10.8360



70.8189, 9.8805, 11.5554



70.8205, -18.8158, 3.0319

# Square

The Square scheme is like the rectangle color scheme, but the four colors are evenly spaced on the color wheel.



70.8205, 9.8780, 11.5565



70.8205, -12.1778, 15.2763



70.8205, -16.4804, -4.8223



70.8205, 5.0228, -9.8563



# Rectangle

The Rectangle color scheme consists of four colors that form a rectangle on the color wheel.



70.8189, 9.8805, 11.5554



70.8205, -1.8921, 17.1611



70.8205, -16.4804, -4.8223



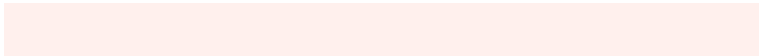
70.8205, -5.6535, -12.6700

# Sweetspot

The Sweet Spot groups the original color and five complimentary colors.



70.8205, 9.8780, 11.5565



94.6033, -0.2597, 8.0040



70.2642, 20.7292, -10.2115



43.5559, 0.0863, 3.8052

0.0000, NaN, NaN



46.2646, -2.4686, 2.5136



# Same Dimension

The Same Dimension uses a secret algorithm to generate beautiful new colors.



70.8205, 9.8780, 11.5565



80.1243, 15.3103, 15.2032



78.0176, -2.8069, 18.7448



36.5298, 0.5857, 3.4884



30.9762, 47.5275, 19.9194



8.4741, 10.2789, 5.4017

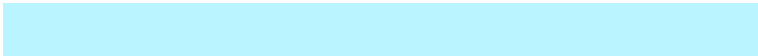


# Inverse Universe

The Inverse Universe completely reimagines the original color for something new.



78.7208, -15.5619, -3.2869



91.2128, -20.4900, -5.6506



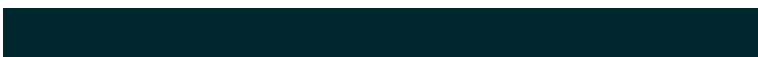
71.0054, -3.3020, -13.4248



38.0819, -4.3904, 0.5770



49.5600, -20.6525, -17.3630

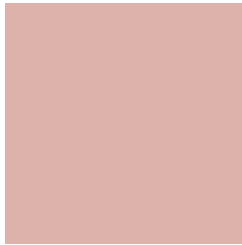


12.9559, -5.6960, -3.8977



# Previews

## White Background



This preview shows how the HunterLab color 70.8189, 9.8805, 11.5554 looks on a white background.

## Color Contrast Check

Large Text (above 18pt) WCAG AA × Fail

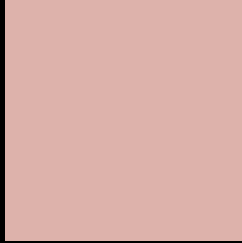
Any Text WCAG AA × Fail

Large Text (above 18pt) WCAG AAA × Fail

Any Text WCAG AAA × Fail



# Black Background



This preview shows how the HunterLab color 70.8189, 9.8805, 11.5554 looks on a black background.

## Color Contrast Check

Large Text (above 18pt) WCAG AA ✓ Pass

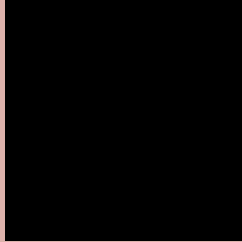
Any Text WCAG AA ✓ Pass

Large Text (above 18pt) WCAG AAA ✓ Pass

Any Text WCAG AAA ✓ Pass

If you want to check with other color combinations, try the [Color Contrast Checker](#).

## HunterLab 70.8189, 9.8805, 11.5554 Background



This preview shows how black text looks on a background with the HunterLab color 70.8189, 9.8805, 11.5554.



This preview shows how white text looks on a background with the HunterLab color 70.8189, 9.8805,



# Color Blindness Simulation

Color vision deficiency is a very complex topic, and I could not describe the different causes any better than Wikipedia does, so if you want to learn more, you should check out their [article about color blindness](#).

## Dichromacy



### Original Color

70.8189, 9.8805, 11.5554

### Protanopia

70.8128, -3.2931, 9.1863

### Deuteranopia

70.7786, 5.3119, 11.8492



## Tritanopia

70.7263, 14.9044, 3.4828

# Trichromacy



## Original Color

70.8189, 9.8805, 11.5554

## Protanomaly

70.8338, 1.2393, 10.1509

## Deuteranomaly

70.8122, 6.8951, 11.9128

## Tritanomaly

70.6807, 12.9175, 6.6555

# Monochromacy



## Original Color

70.8189, 9.8805, 11.5554

## Achromatopsia

71.7578, -3.8288, 3.8987

## Achromatomaly

71.3822, 0.5962, 6.7852

# CSS Examples

## Text

The CSS property to change the color of the text to HunterLab 70.8189, 9.8805, 11.5554 is called "color". The color property can be set on classes, ids or directly on the HTML element.

This example shows how text in the color `rgb(221, 178, 171)` looks like.

```
.text, #text, p{  
    color:rgb(221, 178, 171)  
}
```

If you want to add a text shadow in that color use the text-shadow property, you can generate a text shadow directly with our [CSS Text Shadow Generator](#).

Here you see how black text with a 4 pixel rgb(221, 178, 171) colored shadow looks like.

```
.shadow{ text-shadow: 4px 4px 2px rgb(221, 178, 171) }
```

## Border

The CSS property to change the border of an element to HunterLab 70.8189, 9.8805, 11.5554 is called "border". The border property can be set on classes, ids or directly on the HTML element.

This example shows the color as border, it can be applied via the CSS property "border" or "border-color".

```
.border, #border, table{ border:4px solid rgb(221, 178, 171) }
```



If only the border color should be changed use the property `border-color`.

```
.border{ border-color:rgb(221, 178, 171) }
```

If you want to add a box shadow in that color use:

Here you see how a box with a 4 pixel `rgb(221, 178, 171)` colored shadow looks like.

```
.boxshadow{ -moz-box-shadow:4px 4px 4px  
4px rgb(221, 178, 171); -webkit-box-  
shadow:4px 4px 4px 4px rgb(221, 178, 171);  
box-shadow:4px 4px 4px 4px rgb(221, 178,  
171) }
```

# Background

The CSS property to change the background color of an element to HunterLab 70.8189, 9.8805, 11.5554 is called "background". The background property can be set on classes, ids or directly on the HTML element.

```
.background, #background, body{  
background: rgb(221, 178, 171) }
```

If only the background color should be changed can be used:

```
.background{ background-color: rgb(221,  
178, 171) }
```

This example shows the color as background, it is applied via the CSS property "background".

To optimize and compress your CSS code, you can use our [online CSS compressor and optimizer](#) based on csstidy. If you want to create a linear or radial gradient as background or border, check our [CSS Gradient Generator](#).

Hey! You found this booklet interesting? Support Converting Colors with the new Membership Option!

The pro membership hides all ads, plus gives you double the colors in the color bucket, and more awesome pro features!

**[Learn more, Memberships starting at \\$2.50/m!](#)**

**Follow me  
on Twitter!**

@ConvertingColor