

Converting Colors

HunterLab(70.8785, 10.2734,
11.8096)

Have a look what the booklet for
HunterLab(70.8785, 10.2734,
11.8096) contains.

HunterLab(70.9300, 10.2452, 11.6807)	3
<i>Conversions</i>	4
<i>Details</i>	6
<i>Harmonies</i>	12
<i>Previews</i>	24
<i>Color Blindness Simulation</i>	28
<i>CSS Examples</i>	31

Color

**HunterLab(70.9300, 10.2452,
11.6807)**

Conversions

Conversions Part 1

Format	Color
Hex	DEB2AB
RGB	222, 178, 171
RGB Percent	87%, 70%, 67%
CMY	0.1294, 0.3019, 0.3294
CMYK	0.00, 0.20, 0.23, 0.13
HSL	8°, 44%, 77%
HSV	8°, 23%, 87%
XYZ	53.3953, 50.3106, 45.4247
YIQ	190.3580, 28.4710, 7.1510

Conversions

Conversions Part 2

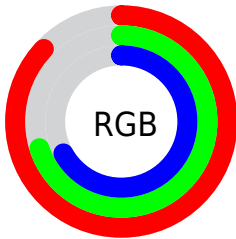
Format	Color
R _Y B	222, 179, 171
Decimal	14594731
CIE Lab	76.26, 14.89, 9.63
CIE LCh	76, 17.732, 32.882
Yxy	50.3130, 0.3580, 0.3374
Android (android.graphics.Color)	4292784811 (0xFFDEB2AB)
YUV	190.3580, -9.5435, 27.7500
Hunter-Lab	70.9300, 10.2452, 11.6807

Details

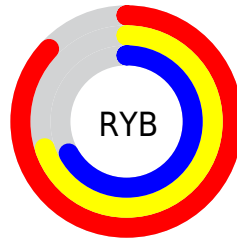
The HunterLab color $70.9300, 10.2452, 11.6807$ is a light color, and the websafe version is hex $CC9999$. A complement of this color would be $79.0765, -15.8591, -3.3665$, and the grayscale version is $71.9408, -3.8386, 3.9087$.

A 20% lighter version of the original color is $92.5184, 0.9107, 10.9156$, and $49.0980, 10.0190, 9.3537$ is the 20% darker color. If you saturate the color by 10%, you get $65.1456, 17.2596, 14.6422$, and if you desaturate by 10%, it is $77.0666, 3.5815, 8.6456$.

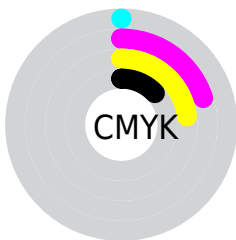
Distribution



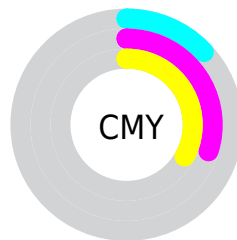
- Red (87%)
- Green (70%)
- Blue (67%)



- Red (87%)
- Yellow (70%)
- Blue (67%)



- Cyan (0%)
- Magenta (20%)
- Yellow (23%)
- Black (13%)



- Cyan (13%)
- Magenta (30%)
- Yellow (33%)

Brightness & Saturation Gradients

These gradients show how the HunterLab color 70.9300, 10.2452, 11.6807 changes by changing the brightness by 10 percent. The first figure shows a shift by +10% for each color and the second figure -10%.

Similar to the brightness gradients but the following saturation gradients show a change of the HunterLab color 70.9300, 10.2452, 11.6807 by changing the saturation by 10% instead.

70.9300, 10.2452,
11.6807

70.9300, 10.2452,
11.6807

196.9489, 8.8440,
22.0514

59.7178, 10.1191,
10.5802

95.2042, 10.2908,
13.9044

49.1664, 9.9191,
9.4801

108.2043, 10.2267,
15.0300

39.3221, 9.6328,
8.3759

121.7476, 10.1099,
16.1670

30.2398, 9.2468,
7.2585

135.8131, 9.9439,
17.3165

21.9898, 8.7433,
6.1131

150.3820, 9.7318,
18.4792

14.6666, 8.0973,
4.9128

165.4375, 9.4763,

8.3254, 7.6325,

19.6557

5.2464

180.9645, 9.1797,
20.8463

0.0000, NaN, NaN

0.0000, NaN, NaN

■ 70.9300, 10.2452,
11.6807

■ 70.9300, 10.2452,
11.6807

■ 65.1456, 17.2596,
14.6422

■ 77.0666, 3.5815,
8.6456

■ 59.7672, 24.6190,
17.4758

■ 83.5022, -2.7415,
5.5649

■ 54.8666, 32.2515,
20.1049

■ 90.1992, -8.7578,
2.4585

■ 50.5246, 39.9959,
22.4185

■ 96.9644, -15.4035,
1.6304

■ 46.8276, 47.5637,

■ 97.0926, -15.6028,

24.2748

1.7822

■ 43.8569, 54.5258,
25.5227

■ 41.6694, 60.3608,
26.0577

■ 40.5995, 63.4919,
26.1287

Harmonies

Analogous

The Analogous color harmony consists of three colors that are next to each other on the color wheel.



70.9316, 13.0155, 4.6267



70.9300, 10.2452, 11.6807



70.9316, 3.6993, 16.1834

Triad

The Triadic color harmony groups three colors that are evenly spaced from another and form a triangle on the color wheel.



70.9316, 10.2427, 11.6818



70.9316, -17.5556, 10.4925



70.9316, -2.9773, -13.1989

Complementary

The Complementary color scheme is a pair of colors which are on the opposite of each other on the color wheel.



70.9300, 10.2452, 11.6807



79.0765, -15.8591, -3.3665

Split Complementary

Split-complementary colors differ from the complementary color scheme. The scheme consists of three colors, the original color and two neighbors of the complement color.



70.9316, -10.9781, -11.1661



70.9300, 10.2452, 11.6807



70.9316, -19.1606, 3.0867

Square

The Square scheme is like the rectangle color scheme, but the four colors are evenly spaced on the color wheel.



70.9316, 10.2427, 11.6818



70.9316, -12.3184, 15.5547



70.9316, -16.8073, -4.9662



70.9316, 5.1645, -10.2404

Rectangle

The Rectangle color scheme consists of four colors that form a rectangle on the color wheel.



70.9300, 10.2452, 11.6807



70.9316, -1.7828, 17.4375



70.9316, -16.8073, -4.9662



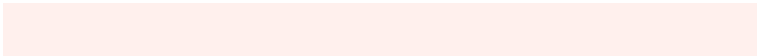
70.9316, -5.7722, -13.0771

Sweetspot

The Sweet Spot groups the original color and five complimentary colors.



70.9316, 10.2427, 11.6818



94.5881, -0.2336, 7.9870



70.4078, 21.2413, -10.4952



43.5482, 0.0994, 3.7967

0.0000, NaN, NaN



46.2646, -2.4686, 2.5136

Same Dimension

The Same Dimension uses a secret algorithm to generate beautiful new colors.



70.9316, 10.2427, 11.6818



79.3874, 16.2380, 15.4990



78.3097, -2.7796, 19.0344



37.4200, 0.6216, 3.5694



31.4394, 48.4450, 20.2209



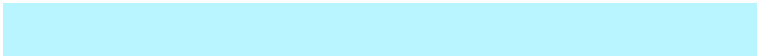
8.8534, 10.9685, 5.6474

Inverse Universe

The Inverse Universe completely reimagines the original color for something new.



79.0765, -15.8591, -3.3665



90.9853, -21.0457, -5.9543



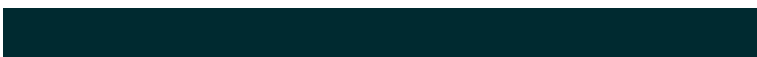
71.1544, -3.2820, -13.7969



39.0314, -4.5187, 0.5974



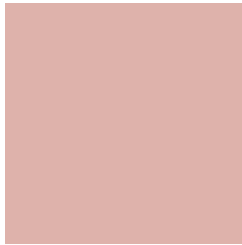
50.5167, -21.1801, -17.4199



13.6331, -6.0045, -4.0783

Previews

White Background



This preview shows how the HunterLab color 70.9300, 10.2452, 11.6807 looks on a white background.

Color Contrast Check

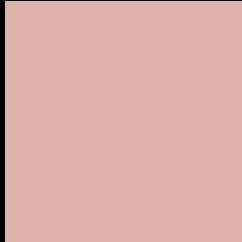
Large Text (above 18pt) WCAG AA × Fail

Any Text WCAG AA × Fail

Large Text (above 18pt) WCAG AAA × Fail

Any Text WCAG AAA × Fail

Black Background



This preview shows how the HunterLab color 70.9300, 10.2452, 11.6807 looks on a black background.

Color Contrast Check

Large Text (above 18pt) WCAG AA ✓ Pass

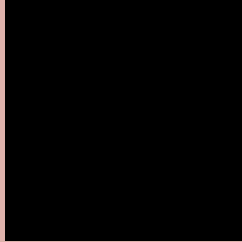
Any Text WCAG AA ✓ Pass

Large Text (above 18pt) WCAG AAA ✓ Pass

Any Text WCAG AAA ✓ Pass

If you want to check with other color combinations, try the [Color Contrast Checker](#).

HunterLab 70.9300, 10.2452, 11.6807 Background



This preview shows how black text looks on a background with the HunterLab color 70.9300, 10.2452, 11.6807.



This preview shows how white text looks on a background with the HunterLab color 70.9300, 10.2452, 11.6807.

Color Blindness Simulation

Color vision deficiency is a very complex topic, and I could not describe the different causes any better than Wikipedia does, so if you want to learn more, you should check out their [article about color blindness](#).

Dichromacy



Original Color

70.9300, 10.2452, 11.6807

Protanopia

71.2061, -3.4684, 9.6155

Deuteranopia

71.0664, 4.7979, 12.1465



Tritanopia

70.8388, 15.2658, 3.6226

Trichromacy



Original Color

70.9300, 10.2452, 11.6807

Protanomaly

70.9338, 1.5798, 10.2657

Deuteranomaly

71.0978, 6.3787, 12.2076

Tritanomaly

70.7927, 13.2802, 6.7895

Monochromacy



Original Color

70.9300, 10.2452, 11.6807

Achromatopsia

71.7578, -3.8288, 3.8987

Achromatomaly

71.4796, 0.9285, 6.9017

CSS Examples

Text

The CSS property to change the color of the text to HunterLab 70.9300, 10.2452, 11.6807 is called "color". The color property can be set on classes, ids or directly on the HTML element.

This example shows how text in the color `rgb(222, 178, 171)` looks like.

```
.text, #text, p{  
    color:rgb(222, 178, 171)  
}
```

If you want to add a text shadow in that color use the text-shadow property, you can generate a text shadow directly with our [CSS Text Shadow Generator](#).

Here you see how black text with a 4 pixel rgb(222, 178, 171) colored shadow looks like.

```
.shadow{ text-shadow: 4px 4px 2px rgb(222, 178, 171) }
```

Border

The CSS property to change the border of an element to HunterLab 70.9300, 10.2452, 11.6807 is called "border". The border property can be set on classes, ids or directly on the HTML element.

This example shows the color as border, it can be applied via the CSS property "border" or "border-color".

```
.border, #border, table{ border:4px solid rgb(222, 178, 171) }
```


If only the border color should be changed use the property `border-color`.

```
.border{ border-color:rgb(222, 178, 171) }
```

If you want to add a box shadow in that color use:

Here you see how a box with a 4 pixel `rgb(222, 178, 171)` colored shadow looks like.

```
.boxshadow{ -moz-box-shadow:4px 4px 4px  
4px rgb(222, 178, 171); -webkit-box-  
shadow:4px 4px 4px 4px rgb(222, 178, 171);  
box-shadow:4px 4px 4px 4px rgb(222, 178,  
171) }
```

Background

The CSS property to change the background color of an element to HunterLab 70.9300, 10.2452, 11.6807 is called "background". The background property can be set on classes, ids or directly on the HTML element.

```
.background, #background, body{  
background: rgb(222, 178, 171) }
```

If only the background color should be changed can be used:

```
.background{ background-color: rgb(222,  
178, 171) }
```

This example shows the color as background, it is applied via the CSS property "background".

To optimize and compress your CSS code, you can use our [online CSS compressor and optimizer](#) based on csstidy. If you want to create a linear or radial gradient as background or border, check our [CSS Gradient Generator](#).

Hey! You found this booklet interesting? Support Converting Colors with the new Membership Option!

The pro membership hides all ads, plus gives you double the colors in the color bucket, and more awesome pro features!

[Learn more, Memberships starting at \\$2.50/m!](#)

**Follow me
on Twitter!**

@ConvertingColor