

Converting Colors

HunterLab(70.9099, 1.6292,
8.6530)

Have a look what the booklet for
HunterLab(70.9099, 1.6292, 8.6530)
contains.

HunterLab(70.9455, 1.8428, 8.5488)	3
<i>Conversions</i>	4
<i>Details</i>	6
<i>Harmonies</i>	12
<i>Previews</i>	24
<i>Color Blindness Simulation</i>	28
<i>CSS Examples</i>	31

Color

**HunterLab(70.9455, 1.8428,
8.5488)**

Conversions

Conversions Part 1

Format	Color
Hex	CCB8B2
RGB	204, 184, 178
RGB Percent	80%, 72%, 70%
CMY	0.2000, 0.2784, 0.3020
CMYK	0.00, 0.10, 0.13, 0.20
HSL	14°, 20%, 75%
HSV	14°, 13%, 80%
XYZ	50.0782, 50.3326, 49.1952
YIQ	189.2960, 13.8460, 2.3740

Conversions

Conversions Part 2

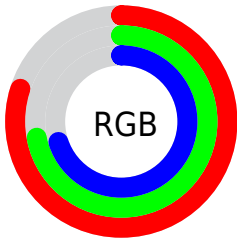
Format	Color
RYB	204, 186, 178
Decimal	13416626
CIELab	76.27, 6.11, 5.62
CIELCh	76, 8.303, 42.646
Yxy	50.3349, 0.3347, 0.3364
Android (android.graphics.Color)	4291606706 (0xFFCCB8B2)
YUV	189.2960, -5.5689, 12.8954
Hunter-Lab	70.9455, 1.8428, 8.5488

Details

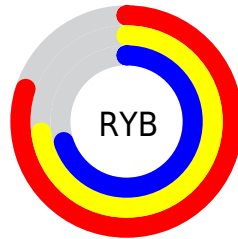
The HunterLab color $70.9455, 1.8428, 8.5488$ is a light color, and the websafe version is hex `CCCCCC`. A complement of this color would be $73.6286, -8.9596, -0.7894$, and the grayscale version is $71.4807, -3.8140, 3.8837$.

A 20% lighter version of the original color is $94.6154, -0.9697, 9.5055$, and $49.1907, 2.4414, 6.9684$ is the 20% darker color. If you saturate the color by 10%, you get $65.8895, 6.8736, 11.7750$, and if you desaturate by 10%, it is $76.2236, -2.8947, 5.1717$.

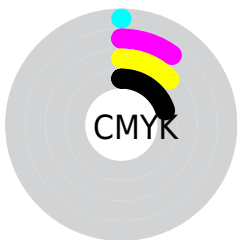
Distribution



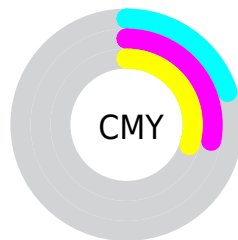
- Red (80%)
- Green (72%)
- Blue (70%)



- Red (80%)
- Yellow (73%)
- Blue (70%)



- Cyan (0%)
- Magenta (10%)
- Yellow (13%)
- Black (20%)



- Cyan (20%)
- Magenta (28%)
- Yellow (30%)

Brightness & Saturation Gradients

These gradients show how the HunterLab color 70.9455, 1.8428, 8.5488 changes by changing the brightness by 10 percent. The first figure shows a shift by +10% for each color and the second figure -10%.

Similar to the brightness gradients but the following saturation gradients show a change of the HunterLab color 70.9455, 1.8428, 8.5488 by changing the saturation by 10% instead.

■ 70.9455, 1.8428,
8.5488

■ 70.9455, 1.8428,
8.5488

196.9706, -2.6670,
17.4277

■ 59.7324, 2.1358,
7.6589

■ 95.2212, 1.1076,
10.3874

■ 49.1801, 2.3771,
6.7851

108.2221, 0.6765,
11.3349

■ 39.3348, 2.5584,
5.9264

121.7661, 0.2061,
12.3020

■ 30.2514, 2.6716,
5.0795

135.8323, -0.3014,
13.2885

■ 22.0003, 2.7050,
4.2384

150.4018, -0.8441,
14.2944

■ 14.6757, 2.6413,
3.3912

165.4580, -1.4202,

■ 8.3343, 2.7478,

15.3197

3.2511

180.9856, -2.0282,
16.3642

0.0000, NaN, NaN

0.0000, NaN, NaN

■ 70.9455, 1.8428,
8.5488

■ 70.9455, 1.8428,
8.5488

■ 65.8895, 6.8736,
11.7750

■ 76.2236, -2.8947,
5.1717

■ 61.0816, 12.2267,
14.8060

■ 81.6934, -7.3615,
1.6705

■ 56.5601, 17.9090,
17.5878

■ 87.3351, -11.5895,
-1.9316

■ 52.3682, 23.9034,
20.0486

■ 92.9699, -16.5097,
-3.3360

■ 48.5555, 30.1486,

■ 95.6961, -20.6483,

22.0982

-0.0097

■ 45.1765, 36.5173,
23.6335

■ 42.2865, 42.7958,
24.5544

■ 39.9338, 48.6786,
24.7992

■ 38.5733, 52.4559,
24.6870

Harmonies

Analogous

The Analogous color harmony consists of three colors that are next to each other on the color wheel.



70.9471, 3.7165, 5.4138



70.9455, 1.8428, 8.5488



70.9471, -1.5269, 10.3707

Triad

The Triadic color harmony groups three colors that are evenly spaced from another and form a triangle on the color wheel.



70.9471, 1.8407, 8.5499



70.9471, -10.8417, 5.9676



70.9471, -2.1316, -3.4971

Complementary

The Complementary color scheme is a pair of colors which are on the opposite of each other on the color wheel.



70.9455, 1.8428, 8.5488



73.6286, -8.9596, -0.7894

Split Complementary

Split-complementary colors differ from the complementary color scheme. The scheme consists of three colors, the original color and two neighbors of the complement color.



70.9471, -6.0238, -3.3289



70.9455, 1.8428, 8.5488



70.9471, -10.9956, 2.2740

Square

The Square scheme is like the rectangle color scheme, but the four colors are evenly spaced on the color wheel.



70.9471, 1.8407, 8.5499



70.9471, -8.8241, 8.9363



70.9471, -9.2492, -1.1697



70.9471, 1.3898, -1.6176

Rectangle

The Rectangle color scheme consists of four colors that form a rectangle on the color wheel.



70.9455, 1.8428, 8.5488



70.9471, -4.1370, 10.6578



70.9471, -9.2492, -1.1697



70.9471, -3.4411, -3.6810

Sweetspot

The Sweet Spot groups the original color and five complimentary colors.



70.9471, 1.8407, 8.5499



97.1889, -2.9490, 7.2336



69.8377, 8.2851, -2.3673



44.7216, -1.1537, 3.5019

0.0000, NaN, NaN



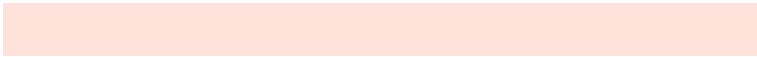
46.2646, -2.4686, 2.5136

Same Dimension

The Same Dimension uses a secret algorithm to generate beautiful new colors.



70.9471, 1.8407, 8.5499



89.6786, 3.9194, 12.0399



74.7117, -4.5458, 12.5316



34.0985, 0.1046, 3.4871



30.7957, 41.0235, 19.6944



7.8011, 7.0430, 4.9303

Inverse Universe

The Inverse Universe completely reimagines the original color for something new.



73.6286, -8.9596, -0.7894



93.7801, -12.6095, -2.2472



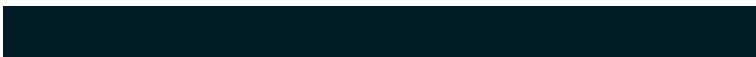
69.7688, -2.6526, -5.6023



35.0295, -3.6432, 0.2450



42.4807, -13.3671, -24.2414



10.2025, -3.7952, -4.5594

Previews

White Background



This preview shows how the HunterLab color 70.9455, 1.8428, 8.5488 looks on a white background.

Color Contrast Check

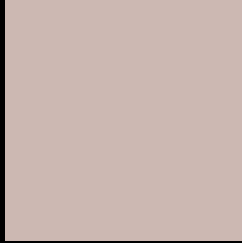
Large Text (above 18pt) WCAG AA × Fail

Any Text WCAG AA × Fail

Large Text (above 18pt) WCAG AAA × Fail

Any Text WCAG AAA × Fail

Black Background



This preview shows how the HunterLab color 70.9455, 1.8428, 8.5488 looks on a black background.

Color Contrast Check

Large Text (above 18pt) WCAG AA ✓ Pass

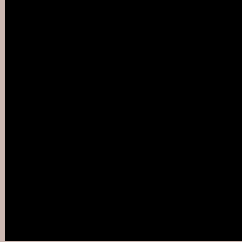
Any Text WCAG AA ✓ Pass

Large Text (above 18pt) WCAG AAA ✓ Pass

Any Text WCAG AAA ✓ Pass

If you want to check with other color combinations, try the [Color Contrast Checker](#).

HunterLab 70.9455, 1.8428, 8.5488 Background



This preview shows how black text looks on a background with the HunterLab color 70.9455, 1.8428, 8.5488.



This preview shows how white text looks on a background with the HunterLab color 70.9455, 1.8428,

8.5488.

Color Blindness Simulation

Color vision deficiency is a very complex topic, and I could not describe the different causes any better than Wikipedia does, so if you want to learn more, you should check out their [article about color blindness](#).

Dichromacy



Original Color

70.9455, 1.8428, 8.5488

Protanopia

70.8332, -2.9956, 7.4514

Deuteranopia

70.9732, 4.9244, 8.6335



Tritanopia

70.8203, 6.9808, 0.0394

Trichromacy



Original Color

70.9455, 1.8428, 8.5488

Protanomaly

70.8822, -1.3500, 7.9805

Deuteranomaly

71.0572, 3.7193, 8.7058

Tritanomaly

70.7878, 4.9511, 3.3816

Monochromacy



Original Color

70.9455, 1.8428, 8.5488

Achromatopsia

71.3359, -3.8063, 3.8758

Achromatomaly

71.0723, -1.8759, 5.4718

CSS Examples

Text

The CSS property to change the color of the text to HunterLab 70.9455, 1.8428, 8.5488 is called "color". The color property can be set on classes, ids or directly on the HTML element.

This example shows how text in the color `rgb(204, 184, 178)` looks like.

```
.text, #text, p{  
    color:rgb(204, 184, 178)  
}
```

If you want to add a text shadow in that color use the text-shadow property, you can generate a text shadow directly with our [CSS Text Shadow Generator](#).

Here you see how black text with a 4 pixel rgb(204, 184, 178) colored shadow looks like.

```
.shadow{ text-shadow: 4px 4px 2px rgb(204, 184, 178) }
```

Border

The CSS property to change the border of an element to HunterLab 70.9455, 1.8428, 8.5488 is called "border".

The border property can be set on classes, ids or directly on the HTML element.

This example shows the color as border, it can be applied via the CSS property "border" or "border-color".

```
.border, #border, table{ border:4px solid rgb(204, 184, 178) }
```


If only the border color should be changed use the property border-color.

```
.border{ border-color:rgb(204, 184, 178) }
```

If you want to add a box shadow in that color use:

Here you see how a box with a 4 pixel rgb(204, 184, 178) colored shadow looks like.

```
.boxshadow{ -moz-box-shadow:4px 4px 4px  
4px rgb(204, 184, 178); -webkit-box-  
shadow:4px 4px 4px 4px rgb(204, 184, 178);  
box-shadow:4px 4px 4px 4px rgb(204, 184,  
178) }
```

Background

The CSS property to change the background color of an element to HunterLab 70.9455, 1.8428, 8.5488 is called "background". The background property can be set on classes, ids or directly on the HTML element.

```
.background, #background, body{  
background: rgb(204, 184, 178) }
```

If only the background color should be changed can be used:

```
.background{ background-color: rgb(204,  
184, 178) }
```

This example shows the color as background, it is applied via the CSS property "background".

To optimize and compress your CSS code, you can use our [online CSS compressor and optimizer](#) based on csstidy. If you want to create a linear or radial gradient as background or border, check our [CSS Gradient Generator](#).

Hey! You found this booklet interesting? Support Converting Colors with the new Membership Option!

The pro membership hides all ads, plus gives you double the colors in the color bucket, and more awesome pro features!

[Learn more, Memberships starting at \\$2.50/m!](#)

**Follow me
on Twitter!**

@ConvertingColor