

Converting Colors

HunterLab(70.9718, 3.4214,
10.6228)

Have a look what the booklet for
HunterLab(70.9718, 3.4214,
10.6228) contains.

HunterLab(71.0207, 3.3186, 10.8157)	3
<i>Conversions</i>	4
<i>Details</i>	6
<i>Harmonies</i>	12
<i>Previews</i>	24
<i>Color Blindness Simulation</i>	28
<i>CSS Examples</i>	31

Color

**HunterLab(71.0207, 3.3186,
10.8157)**

Conversions

Conversions Part 1

Format	Color
Hex	D1B7AD
RGB	209, 183, 173
RGB Percent	82%, 72%, 68%
CMY	0.1804, 0.2823, 0.3216
CMYK	0.00, 0.12, 0.17, 0.18
HSL	17°, 28%, 75%
HSV	17°, 17%, 82%
XYZ	50.7708, 50.4394, 46.5950
YIQ	189.6340, 18.7060, 2.4020

Conversions

Conversions Part 2

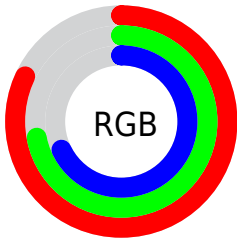
Format	Color
R_{YB}	209, 187, 173
Decimal	13744045
CIE Lab	76.34, 7.68, 8.49
CIE LCh	76, 11.448, 47.871
Yxy	50.4417, 0.3435, 0.3413
Android (android.graphics.Color)	4291934125 (0xFFD1B7AD)
YUV	189.6340, -8.2006, 16.9840
Hunter-Lab	71.0207, 3.3186, 10.8157

Details

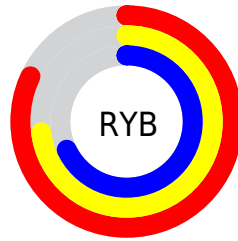
The HunterLab color $71.0207, 3.3186, 10.8157$ is a light color, and the websafe version is hex `CCCCCC`. A complement of this color would be $73.7111, -9.9350, -3.2739$, and the grayscale version is $71.6326, -3.8221, 3.8919$.

A 20% lighter version of the original color is $94.1246, -1.4170, 11.7397$, and $49.2095, 3.6974, 8.5927$ is the 20% darker color. If you saturate the color by 10%, you get $66.1807, 8.1373, 14.2709$, and if you desaturate by 10%, it is $76.0780, -1.1879, 7.1271$.

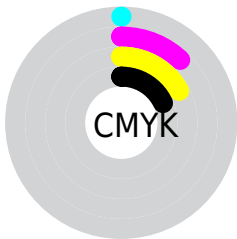
Distribution



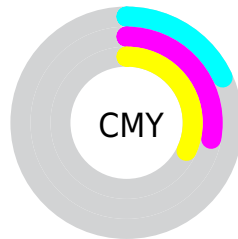
- Red (82%)
- Green (72%)
- Blue (68%)



- Red (82%)
- Yellow (73%)
- Blue (68%)



- Cyan (0%)
- Magenta (12%)
- Yellow (17%)
- Black (18%)



- Cyan (18%)
- Magenta (28%)
- Yellow (32%)

Brightness & Saturation Gradients

These gradients show how the HunterLab color 71.0207, 3.3186, 10.8157 changes by changing the brightness by 10 percent. The first figure shows a shift by +10% for each color and the second figure -10%.

Similar to the brightness gradients but the following saturation gradients show a change of the HunterLab color 71.0207, 3.3186, 10.8157 by changing the saturation by 10% instead.

■ 71.0207, 3.3186,
10.8157

■ 71.0207, 3.3186,
10.8157

197.0763, -0.6294,
20.7590

■ 59.8034, 3.5352,
9.7758

■ 95.3042, 2.7250,
12.9287

■ 49.2467, 3.6960,
8.7410

108.3087, 2.3603,
14.0032

■ 39.3966, 3.7916,
7.7078

121.8562, 1.9538,
15.0915

■ 30.3081, 3.8128,
6.6689

135.9257, 1.5080,
16.1943

■ 22.0512, 3.7463,
5.6119

150.4985, 1.0250,
17.3122

■ 14.7202, 3.5727,
4.5147

165.5578, 0.5067,

■ 8.3775, 3.5481,

18.4455

4.6568

181.0883, -0.0453,
19.5943

0.0000, NaN, NaN

0.0000, NaN, NaN

■ 71.0207, 3.3186,
10.8157

■ 71.0207, 3.3186,
10.8157

■ 66.1807, 8.1373,
14.2709

■ 76.0780, -1.1879,
7.1271

■ 61.5820, 13.2963,
17.4368

■ 81.3236, -5.4034,
3.2427

■ 57.2599, 18.8011,
20.2484

■ 86.7387, -9.3599,
-0.8047

■ 53.2535, 24.6345,
22.6247

■ 92.2500, -13.3990,
-4.1960

■ 49.6066, 30.7382,

■ 96.0705, -19.2881,

24.4728

0.4733

■ 46.3663, 36.9946,
25.6976

■ 43.5791, 43.2092,
26.2235

■ 41.2826, 49.0985,
26.0585

■ 40.7302, 50.6070,
25.9837

Harmonies

Analogous

The Analogous color harmony consists of three colors that are next to each other on the color wheel.



71.0223, 6.3753, 6.8346



71.0207, 3.3186, 10.8157



71.0223, -1.5956, 12.8717

Triad

The Triadic color harmony groups three colors that are evenly spaced from another and form a triangle on the color wheel.



71.0223, 3.3164, 10.8168



71.0223, -13.6751, 5.9128



71.0223, -0.5746, -6.2061

Complementary

The Complementary color scheme is a pair of colors which are on the opposite of each other on the color wheel.



71.0207, 3.3186, 10.8157



73.7111, -9.9350, -3.2739

Split Complementary

Split-complementary colors differ from the complementary color scheme. The scheme consists of three colors, the original color and two neighbors of the complement color.



71.0223, -5.9648, -6.4994



71.0207, 3.3186, 10.8157



71.0223, -13.4203, 0.7634

Square

The Square scheme is like the rectangle color scheme, but the four colors are evenly spaced on the color wheel.



71.0223, 3.3164, 10.8168



71.0223, -11.3409, 10.1856



71.0223, -10.6340, -3.8672



71.0223, 4.0831, -3.0937

Rectangle

The Rectangle color scheme consists of four colors that form a rectangle on the color wheel.



71.0207, 3.3186, 10.8157



71.0223, -5.2116, 12.9819



71.0223, -10.6340, -3.8672



71.0223, -2.3640, -6.6457

Sweetspot

The Sweet Spot groups the original color and five complimentary colors.



71.0223, 3.3164, 10.8168



96.6807, -2.6611, 7.8906



68.9820, 12.7873, -3.9209



44.5153, -1.0539, 3.8082

0.0000, NaN, NaN



46.2646, -2.4686, 2.5136

Same Dimension

The Same Dimension uses a secret algorithm to generate beautiful new colors.



71.0223, 3.3164, 10.8168



86.4753, 6.5288, 15.3226



76.2627, -5.5899, 16.1579



35.1218, -0.1076, 3.7255



32.2062, 39.0778, 20.5294



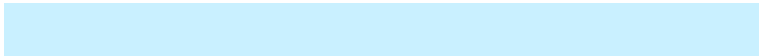
8.4527, 6.9604, 5.3304

Inverse Universe

The Inverse Universe completely reimagines the original color for something new.



73.7111, -9.9350, -3.2739



90.6037, -13.8439, -6.3230



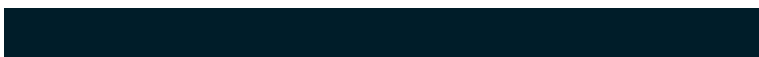
68.3367, -1.1368, -10.2475



35.8168, -3.5275, 0.0853



40.7953, -10.1436, -29.0935



10.2969, -3.3272, -5.6876

Previews

White Background



This preview shows how the HunterLab color 71.0207, 3.3186, 10.8157 looks on a white background.

Color Contrast Check

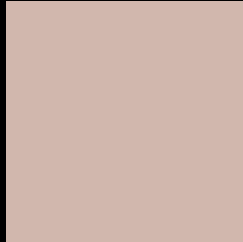
Large Text (above 18pt) WCAG AA × Fail

Any Text WCAG AA × Fail

Large Text (above 18pt) WCAG AAA × Fail

Any Text WCAG AAA × Fail

Black Background



This preview shows how the HunterLab color 71.0207, 3.3186, 10.8157 looks on a black background.

Color Contrast Check

Large Text (above 18pt) WCAG AA ✓ Pass

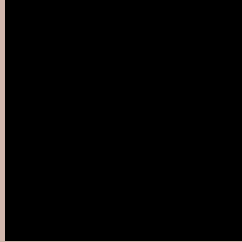
Any Text WCAG AA ✓ Pass

Large Text (above 18pt) WCAG AAA ✓ Pass

Any Text WCAG AAA ✓ Pass

If you want to check with other color combinations, try the [Color Contrast Checker](#).

HunterLab 71.0207, 3.3186, 10.8157 Background



This preview shows how black text looks on a background with the HunterLab color 71.0207, 3.3186, 10.8157.



This preview shows how white text looks on a background with the HunterLab color 71.0207, 3.3186,

Color Blindness Simulation

Color vision deficiency is a very complex topic, and I could not describe the different causes any better than Wikipedia does, so if you want to learn more, you should check out their [article about color blindness](#).

Dichromacy



Original Color

71.0207, 3.3186, 10.8157

Protanopia

71.2061, -3.4684, 9.6155

Deuteranopia

71.0423, 4.8787, 10.8663



Tritanopia

71.0877, 9.2065, 1.3966

Trichromacy



Original Color

71.0207, 3.3186, 10.8157

Protanomaly

71.0579, -0.9699, 9.9279

Deuteranomaly

70.9379, 4.5281, 10.7474

Tritanomaly

71.0224, 7.0322, 5.1063

Monochromacy



Original Color

71.0207, 3.3186, 10.8157

Achromatopsia

71.7578, -3.8288, 3.8987

Achromatomaly

71.3244, -1.0665, 6.2350

CSS Examples

Text

The CSS property to change the color of the text to HunterLab 71.0207, 3.3186, 10.8157 is called "color". The color property can be set on classes, ids or directly on the HTML element.

This example shows how text in the color `rgb(209, 183, 173)` looks like.

```
.text, #text, p{  
    color:rgb(209, 183, 173)  
}
```

If you want to add a text shadow in that color use the text-shadow property, you can generate a text shadow directly with our [CSS Text Shadow Generator](#).

Here you see how black text with a 4 pixel rgb(209, 183, 173) colored shadow looks like.

```
.shadow{ text-shadow: 4px 4px 2px rgb(209, 183, 173) }
```

Border

The CSS property to change the border of an element to HunterLab 71.0207, 3.3186, 10.8157 is called "border". The border property can be set on classes, ids or directly on the HTML element.

This example shows the color as border, it can be applied via the CSS property "border" or "border-color".

```
.border, #border, table{ border:4px solid rgb(209, 183, 173) }
```


If only the border color should be changed use the property `border-color`.

```
.border{ border-color:rgb(209, 183, 173) }
```

If you want to add a box shadow in that color use:

Here you see how a box with a 4 pixel `rgb(209, 183, 173)` colored shadow looks like.

```
.boxshadow{ -moz-box-shadow:4px 4px 4px  
4px rgb(209, 183, 173); -webkit-box-  
shadow:4px 4px 4px 4px rgb(209, 183, 173);  
box-shadow:4px 4px 4px 4px rgb(209, 183,  
173) }
```

Background

The CSS property to change the background color of an element to HunterLab 71.0207, 3.3186, 10.8157 is called "background". The background property can be set on classes, ids or directly on the HTML element.

```
.background, #background, body{  
background: rgb(209, 183, 173) }
```

If only the background color should be changed can be used:

```
.background{ background-color: rgb(209,  
183, 173) }
```

This example shows the color as background, it is applied via the CSS property "background".

To optimize and compress your CSS code, you can use our [online CSS compressor and optimizer](#) based on csstidy. If you want to create a linear or radial gradient as background or border, check our [CSS Gradient Generator](#).

Hey! You found this booklet interesting? Support Converting Colors with the new Membership Option!

The pro membership hides all ads, plus gives you double the colors in the color bucket, and more awesome pro features!

[Learn more, Memberships starting at \\$2.50/m!](#)

**Follow me
on Twitter!**

@ConvertingColor