

Converting Colors

HunterLab(70.9862, 3.2810,
5.5627)

Have a look what the booklet for
HunterLab(70.9862, 3.2810, 5.5627)
contains.

HunterLab(70.8570, 3.4503, 5.3159)	3
<i>Conversions</i>	4
<i>Details</i>	6
<i>Harmonies</i>	12
<i>Previews</i>	24
<i>Color Blindness Simulation</i>	28
<i>CSS Examples</i>	31

Color

**HunterLab(70.8570, 3.4503,
5.3159)**

Conversions

Conversions Part 1

Format	Color
Hex	CCB7B9
RGB	204, 183, 185
RGB Percent	80%, 72%, 73%
CMY	0.2000, 0.2823, 0.2745
CMYK	0.00, 0.10, 0.09, 0.20
HSL	354°, 17%, 76%
HSV	354°, 10%, 80%
XYZ	50.5923, 50.2071, 52.9235
YIQ	189.5070, 11.8740, 5.0740

Conversions

Conversions Part 2

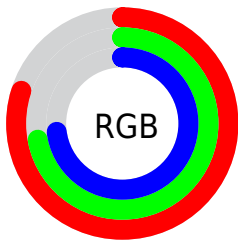
Format	Color
R_{YB}	204, 183, 185
Decimal	13416377
CIE Lab	76.20, 7.82, 1.71
CIE LCh	76, 8.000, 12.339
Yxy	50.2094, 0.3291, 0.3266
Android (android.graphics.Color)	4291606457 (0xFFCCB7B9)
YUV	189.5070, -2.2220, 12.7104
Hunter-Lab	70.8570, 3.4503, 5.3159

Details

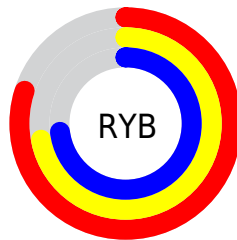
The HunterLab color $70.8570, 3.4503, 5.3159$ is a light color, and the websafe version is hex `CCCCCC`. A complement of this color would be $75.8410, -10.8427, 2.8580$, and the grayscale version is $71.5566, -3.8181, 3.8878$.

A 20% lighter version of the original color is $94.5219, 0.7396, 6.0567$, and $49.1073, 3.9358, 3.9722$ is the 20% darker color. If you saturate the color by 10%, you get $64.5483, 11.1003, 6.5917$, and if you desaturate by 10%, it is $77.5079, -3.9344, 4.2503$.

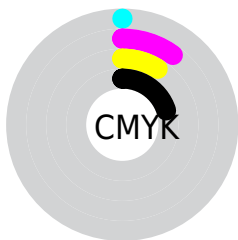
Distribution



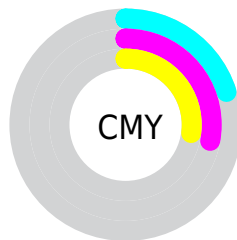
- Red (80%)
- Green (72%)
- Blue (73%)



- Red (80%)
- Yellow (72%)
- Blue (73%)



- Cyan (0%)
- Magenta (10%)
- Yellow (9%)
- Black (20%)




- Cyan (20%)
- Magenta (28%)
- Yellow (27%)

Brightness & Saturation Gradients


These gradients show how the HunterLab color 70.8570, 3.4503, 5.3159 changes by changing the brightness by 10 percent. The first figure shows a shift by +10% for each color and the second figure -10%.


Similar to the brightness gradients but the following saturation gradients show a change of the HunterLab color 70.8570, 3.4503, 5.3159 by changing the saturation by 10% instead.


 70.8570, 3.4503,
5.3159

 70.8570, 3.4503,
5.3159


196.8462, -0.4438,
12.7783

 59.6488, 3.6598,
4.6236


 95.1236, 2.8706,
6.7916

 49.1018, 3.8127,
3.9609


108.1202, 2.5123,
7.5706

 39.2621, 3.8999,
3.3301


121.6601, 2.1119,
8.3763

 30.1848, 3.9119,
2.7326

135.7223, 1.6719,
9.2079

 21.9404, 3.8355,
2.1695

150.2881, 1.1946,
10.0645

 14.6234, 3.6508,
1.6416

165.3406, 0.6818,

 8.2832, 3.6688,

10.9455

1.3064

180.8646, 0.1352,
11.8503

0.0000, NaN, NaN

0.0000, NaN, NaN

■ 70.8570, 3.4503,
5.3159

■ 70.8570, 3.4503,
5.3159

■ 64.5483, 11.1003,
6.5917

■ 77.5079, -3.9344,
4.2503

■ 58.6389, 19.0142,
8.1039

■ 84.4475, -11.0671,
3.3612

■ 53.2073, 27.1284,
9.8761

■ 91.6387, -17.9793,
2.6225

■ 48.3475, 35.2836,
11.9098

■ 95.6961, -20.6482,
-0.0096

■ 44.1679, 43.1697,

14.1636

■ 40.7806, 50.2904,
16.5285

■ 38.2783, 56.0111,
18.8161

■ 36.6968, 59.7581,
20.7880

■ 35.8969, 61.6094,
22.1508

Harmonies

Analogous

The Analogous color harmony consists of three colors that are next to each other on the color wheel.



70.8586, 3.2670, 1.7295



70.8570, 3.4503, 5.3159



70.8586, 1.6622, 8.3527

Triad

The Triadic color harmony groups three colors that are evenly spaced from another and form a triangle on the color wheel.



70.8586, 3.4483, 5.3171



70.8586, -8.6085, 8.7746



70.8586, -5.9739, -3.0446

Complementary

The Complementary color scheme is a pair of colors which are on the opposite of each other on the color wheel.



70.8570, 3.4503, 5.3159



75.8410, -10.8427, 2.8580

Split Complementary

Split-complementary colors differ from the complementary color scheme. The scheme consists of three colors, the original color and two neighbors of the complement color.



70.8586, -9.0718, -0.9540



70.8570, 3.4503, 5.3159



70.8586, -10.5708, 5.9205

Square

The Square scheme is like the rectangle color scheme, but the four colors are evenly spaced on the color wheel.



70.8586, 3.4483, 5.3171



70.8586, -5.3294, 10.2777



70.8586, -10.7386, 2.3652



70.8586, -2.2265, -3.2271

Rectangle

The Rectangle color scheme consists of four colors that form a rectangle on the color wheel.



70.8570, 3.4503, 5.3159



70.8586, -0.3825, 9.7055



70.8586, -10.7386, 2.3652



70.8586, -7.1237, -2.5368

Sweetspot

The Sweet Spot groups the original color and five complimentary colors.



70.8586, 3.4483, 5.3171



97.3540, -2.4869, 5.8224



71.2541, 5.9827, -3.5241



44.7160, -0.7959, 2.7435

0.0000, NaN, NaN



46.2646, -2.4686, 2.5136

Same Dimension

The Same Dimension uses a secret algorithm to generate beautiful new colors.



70.8586, 3.4483, 5.3171



89.6380, 6.2467, 7.1268



73.2765, -1.1517, 8.8816



33.5122, 1.3020, 2.4455



28.4898, 48.9185, 17.4109



6.5177, 11.2841, 3.2636

Inverse Universe

The Inverse Universe completely reimagines the original color for something new.



70.8586, 3.4483, 5.3171



89.6380, 6.2467, 7.1268



73.2996, -6.3210, -1.1525



33.5122, 1.3020, 2.4455



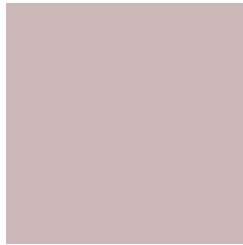
28.4898, 48.9185, 17.4109



6.5177, 11.2841, 3.2636

Previews

White Background



This preview shows how the HunterLab color 70.8570, 3.4503, 5.3159 looks on a white background.

Color Contrast Check

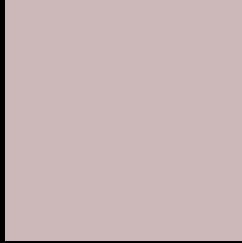
Large Text (above 18pt) WCAG AA × Fail

Any Text WCAG AA × Fail

Large Text (above 18pt) WCAG AAA × Fail

Any Text WCAG AAA × Fail

Black Background



This preview shows how the HunterLab color 70.8570, 3.4503, 5.3159 looks on a black background.

Color Contrast Check

Large Text (above 18pt) WCAG AA ✓ Pass

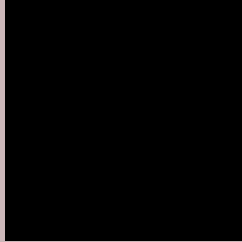
Any Text WCAG AA ✓ Pass

Large Text (above 18pt) WCAG AAA ✓ Pass

Any Text WCAG AAA ✓ Pass

If you want to check with other color combinations, try the [Color Contrast Checker](#).

HunterLab 70.8570, 3.4503, 5.3159 Background



This preview shows how black text looks on a background with the HunterLab color 70.8570, 3.4503, 5.3159.



This preview shows how white text looks on a background with the HunterLab color 70.8570, 3.4503,

Color Blindness Simulation

Color vision deficiency is a very complex topic, and I could not describe the different causes any better than Wikipedia does, so if you want to learn more, you should check out their [article about color blindness](#).

Dichromacy



Original Color

70.8570, 3.4503, 5.3159

Protanopia

70.8554, -2.5057, 4.2770

Deuteranopia

70.8689, 4.9814, 5.3566



Tritanopia

70.7194, 6.6452, -0.0909

Trichromacy



Original Color

70.8570, 3.4503, 5.3159

Protanomaly

70.9921, -0.5626, 4.9381

Deuteranomaly

70.7676, 4.6411, 5.2332

Tritanomaly

70.8807, 5.4484, 2.0574

Monochromacy



Original Color

70.8570, 3.4503, 5.3159

Achromatopsia

71.7578, -3.8288, 3.8987

Achromatomaly

71.2556, -1.0645, 4.3011

CSS Examples

Text

The CSS property to change the color of the text to HunterLab 70.8570, 3.4503, 5.3159 is called "color". The color property can be set on classes, ids or directly on the HTML element.

This example shows how text in the color `rgb(204, 183, 185)` looks like.

```
.text, #text, p{  
    color:rgb(204, 183, 185)  
}
```

If you want to add a text shadow in that color use the text-shadow property, you can generate a text shadow directly with our [CSS Text Shadow Generator](#).

Here you see how black text with a 4 pixel rgb(204, 183, 185) colored shadow looks like.

```
.shadow{ text-shadow: 4px 4px 2px rgb(204, 183, 185) }
```

Border

The CSS property to change the border of an element to HunterLab 70.8570, 3.4503, 5.3159 is called "border".

The border property can be set on classes, ids or directly on the HTML element.

This example shows the color as border, it can be applied via the CSS property "border" or "border-color".

```
.border, #border, table{ border:4px solid rgb(204, 183, 185) }
```


If only the border color should be changed use the property `border-color`.

```
.border{ border-color:rgb(204, 183, 185) }
```

If you want to add a box shadow in that color use:

Here you see how a box with a 4 pixel `rgb(204, 183, 185)` colored shadow looks like.

```
.boxshadow{ -moz-box-shadow:4px 4px 4px  
4px rgb(204, 183, 185); -webkit-box-  
shadow:4px 4px 4px 4px rgb(204, 183, 185);  
box-shadow:4px 4px 4px 4px rgb(204, 183,  
185) }
```

Background

The CSS property to change the background color of an element to HunterLab 70.8570, 3.4503, 5.3159 is called "background". The background property can be set on classes, ids or directly on the HTML element.

```
.background, #background, body{  
background: rgb(204, 183, 185) }
```

If only the background color should be changed can be used:

```
.background{ background-color: rgb(204,  
183, 185) }
```

This example shows the color as background, it is applied via the CSS property "background".

To optimize and compress your CSS code, you can use our [online CSS compressor and optimizer](#) based on csstidy. If you want to create a linear or radial gradient as background or border, check our [CSS Gradient Generator](#).

Hey! You found this booklet interesting? Support Converting Colors with the new Membership Option!

The pro membership hides all ads, plus gives you double the colors in the color bucket, and more awesome pro features!

[Learn more, Memberships starting at \\$2.50/m!](#)

**Follow me
on Twitter!**

@ConvertingColor