

Converting Colors

HunterLab(70.9891, -1.1511,
9.4178)

Have a look what the booklet for
HunterLab(70.9891, -1.1511, 9.4178)
contains.

HunterLab(70.9891, -1.1512, 9.4178)	3
<i>Conversions</i>	4
<i>Details</i>	6
<i>Harmonies</i>	12
<i>Previews</i>	24
<i>Color Blindness Simulation</i>	28
<i>CSS Examples</i>	31

Color

**HunterLab(70.9891, -1.1512,
9.4178)**

Conversions

Conversions Part 1

Format	Color
Hex	C7BAB0
RGB	199, 186, 176
RGB Percent	78%, 73%, 69%
CMY	0.2196, 0.2706, 0.3098
CMYK	0.00, 0.07, 0.12, 0.22
HSL	26°, 17%, 74%
HSV	26°, 12%, 78%
XYZ	48.9486, 50.3945, 48.2215
YIQ	188.7470, 10.9580, -0.3540

Conversions

Conversions Part 2

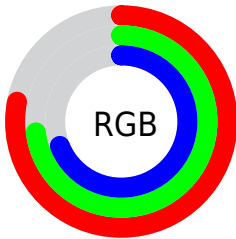
Format	Color
RYB	199, 194, 176
Decimal	13089456
CIELab	76.31, 2.88, 6.71
CIELCh	76, 7.303, 66.734
Yxy	50.3967, 0.3317, 0.3415
Android (android.graphics.Color)	4291279536 (0xFFC7BAB0)
YUV	188.7470, -6.2843, 8.9919
Hunter-Lab	70.9891, -1.1512, 9.4178

Details

The HunterLab color $70.9891, -1.1512, 9.4178$ is a light color, and the websafe version is hex `CCCCCC`. A complement of this color would be $70.5322, -5.9769, -2.0640$, and the grayscale version is $71.2530, -3.8019, 3.8713$.

A 20% lighter version of the original color is $95.1790, -2.3566, 11.0506$, and $49.2443, -0.2605, 7.3808$ is the 20% darker color. If you saturate the color by 10%, you get $67.1660, 1.6423, 13.6121$, and if you desaturate by 10%, it is $74.9461, -3.6651, 4.8488$.

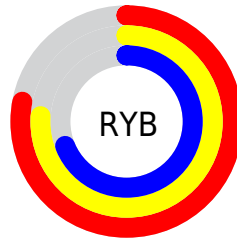
Distribution



Red (78%)

Green (73%)

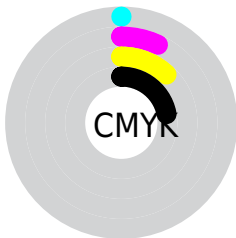
Blue (69%)



Red (78%)

Yellow (76%)

Blue (69%)

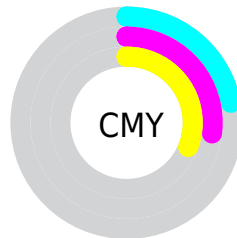


Cyan (0%)

Magenta (7%)

Yellow (12%)

Black (22%)



Cyan (22%)

Magenta (27%)

Yellow (31%)

Brightness & Saturation Gradients

These gradients show how the HunterLab color 70.9891, -1.1512, 9.4178 changes by changing the brightness by 10 percent. The first figure shows a shift by +10% for each color and the second figure -10%.

Similar to the brightness gradients but the following saturation gradients show a change of the HunterLab color 70.9891, -1.1512, 9.4178 by changing the saturation by 10% instead.

■ 70.9891, -1.1512,
9.4178

■ 70.9891, -1.1512,
9.4178

197.0318, -6.8289,
18.6970

■ 59.7735, -0.6989,
8.4716

■ 95.2693, -2.1818,
11.3594

■ 49.2187, -0.2889,
7.5375

108.2723, -2.7512,
12.3547

■ 39.3706, 0.0725,
6.6135

121.8183, -3.3545,
13.3673

■ 30.2842, 0.3797,
5.6948

135.8864, -3.9901,
14.3976

■ 22.0298, 0.6250,
4.7731

150.4578, -4.6566,
15.4457

■ 14.7015, 0.7969,
3.8327

165.5158, -5.3526,

■ 8.3594, 1.0572,

16.5116

3.7818

181.0451, -6.0770,
17.5954

0.0000, NaN, NaN

0.0000, NaN, NaN

■ 70.9891, -1.1512,
9.4178

■ 70.9891, -1.1512,
9.4178

■ 67.1660, 1.6423,
13.6121

■ 74.9461, -3.6651,
4.8488

■ 63.4850, 4.7446,
17.3787

■ 79.0208, -5.9174,
-0.0548

■ 59.9623, 8.1740,
20.6629

■ 83.2048, -7.9330,
-5.2547

■ 56.6142, 11.9457,
23.4035

■ 87.4670, -9.8569,
-10.4062

■ 53.4587, 16.0643,

■ 91.1056, -15.5788,

25.5372

-5.7031

■ 50.5148, 20.5190,
27.0039

■ 94.8217, -21.2165,
-1.0990

■ 47.8021, 25.2746,
27.7575

■ 95.3322, -21.9760,
-0.4809

■ 45.3394, 30.2626,
27.7849

■ 43.4589, 34.5396,
27.3838

Harmonies

Analogous

The Analogous color harmony consists of three colors that are next to each other on the color wheel.



70.9907, 1.6016, 7.5348



70.9891, -1.1512, 9.4178



70.9907, -4.5677, 9.8481

Triad

The Triadic color harmony groups three colors that are evenly spaced from another and form a triangle on the color wheel.



70.9907, -1.1532, 9.4189



70.9907, -10.2583, 3.1204



70.9907, 0.2185, -1.3797

Complementary

The Complementary color scheme is a pair of colors which are on the opposite of each other on the color wheel.



70.9891, -1.1512, 9.4178



70.5322, -5.9769, -2.0640

Split Complementary

Split-complementary colors differ from the complementary color scheme. The scheme consists of three colors, the original color and two neighbors of the complement color.



70.9907, -3.0123, -2.6906



70.9891, -1.1512, 9.4178



70.9907, -9.0286, -0.0135

Square

The Square scheme is like the rectangle color scheme, but the four colors are evenly spaced on the color wheel.



70.9907, -1.1532, 9.4189



70.9907, -9.7819, 6.3112



70.9907, -6.3922, -2.1791



70.9907, 2.4040, 1.3269

Rectangle

The Rectangle color scheme consists of four colors that form a rectangle on the color wheel.



70.9891, -1.1512, 9.4178



70.9907, -6.7504, 9.2706



70.9907, -6.3922, -2.1791



70.9907, -0.7837, -2.0040

Sweetspot

The Sweet Spot groups the original color and five complimentary colors.



70.9907, -1.1532, 9.4189



98.3819, -4.3782, 7.3443



68.4610, 6.0438, 0.5794



45.3170, -1.9046, 3.6309

0.0000, NaN, NaN



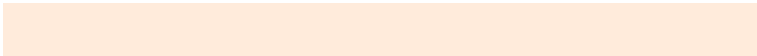
46.2646, -2.4686, 2.5136

Same Dimension

The Same Dimension uses a secret algorithm to generate beautiful new colors.



70.9907, -1.1532, 9.4189



92.5788, -0.5842, 13.9836



74.4460, -6.8880, 13.0398



33.7389, -0.8092, 3.9708



35.0885, 27.0983, 22.0958



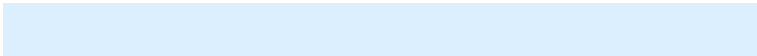
8.5231, 3.8390, 5.3191

Inverse Universe

The Inverse Universe completely reimagines the original color for something new.



70.5322, -5.9769, -2.0640



91.8350, -8.4050, -4.6390



67.0893, -0.2276, -6.4157



33.5638, -2.6526, -0.4167



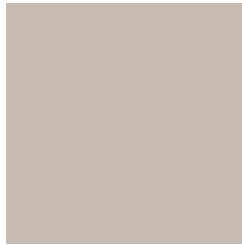
32.1612, 1.8546, -44.2021



7.9496, -1.1787, -7.3919

Previews

White Background



This preview shows how the HunterLab color 70.9891, -1.1512, 9.4178 looks on a white background.

Color Contrast Check

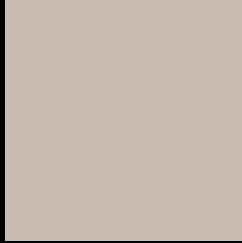
Large Text (above 18pt) WCAG AA × Fail

Any Text WCAG AA × Fail

Large Text (above 18pt) WCAG AAA × Fail

Any Text WCAG AAA × Fail

Black Background



This preview shows how the HunterLab color 70.9891, -1.1512, 9.4178 looks on a black background.

Color Contrast Check

Large Text (above 18pt) WCAG AA ✓ Pass

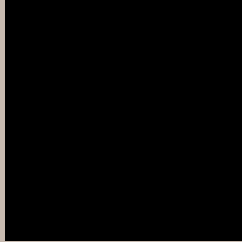
Any Text WCAG AA ✓ Pass

Large Text (above 18pt) WCAG AAA ✓ Pass

Any Text WCAG AAA ✓ Pass

If you want to check with other color combinations, try the [Color Contrast Checker](#).

HunterLab 70.9891, -1.1512, 9.4178 Background



This preview shows how black text looks on a background with the HunterLab color 70.9891, -1.1512, 9.4178.

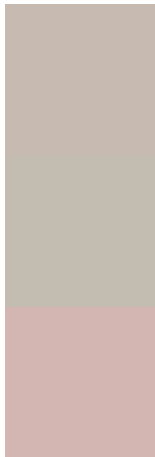


This preview shows how white text looks on a background with the HunterLab color 70.9891, -1.1512, 9.4178.

Color Blindness Simulation

Color vision deficiency is a very complex topic, and I could not describe the different causes any better than Wikipedia does, so if you want to learn more, you should check out their [article about color blindness](#).

Dichromacy



Original Color

70.9891, -1.1512, 9.4178

Protanopia

71.1408, -3.6397, 9.1069

Deuteranopia

71.0486, 5.1212, 9.1586



Tritanopia

71.0315, 4.7827, -0.2386

Trichromacy



Original Color

70.9891, -1.1512, 9.4178

Protanomaly

71.0287, -2.4890, 9.0033

Deuteranomaly

70.9272, 3.2242, 8.9911

Tritanomaly

70.9737, 2.5861, 3.5603

Monochromacy



Original Color

70.9891, -1.1512, 9.4178

Achromatopsia

71.3359, -3.8063, 3.8758

Achromatomaly

71.2493, -2.8609, 6.1176

CSS Examples

Text

The CSS property to change the color of the text to HunterLab 70.9891, -1.1512, 9.4178 is called "color". The color property can be set on classes, ids or directly on the HTML element.

This example shows how text in the color `rgb(199, 186, 176)` looks like.

```
.text, #text, p{  
    color:rgb(199, 186, 176)  
}
```

If you want to add a text shadow in that color use the text-shadow property, you can generate a text shadow directly with our [CSS Text Shadow Generator](#).

Here you see how black text with a 4 pixel rgb(199, 186, 176) colored shadow looks like.

```
.shadow{ text-shadow: 4px 4px 2px rgb(199, 186, 176) }
```

Border

The CSS property to change the border of an element to HunterLab 70.9891, -1.1512, 9.4178 is called "border". The border property can be set on classes, ids or directly on the HTML element.

This example shows the color as border, it can be applied via the CSS property "border" or "border-color".

```
.border, #border, table{ border:4px solid rgb(199, 186, 176) }
```


If only the border color should be changed use the property `border-color`.

```
.border{ border-color:rgb(199, 186, 176) }
```

If you want to add a box shadow in that color use:

Here you see how a box with a 4 pixel `rgb(199, 186, 176)` colored shadow looks like.

```
.boxshadow{ -moz-box-shadow:4px 4px 4px  
4px rgb(199, 186, 176); -webkit-box-  
shadow:4px 4px 4px 4px rgb(199, 186, 176);  
box-shadow:4px 4px 4px 4px rgb(199, 186,  
176) }
```

Background

The CSS property to change the background color of an element to HunterLab 70.9891, -1.1512, 9.4178 is called "background". The background property can be set on classes, ids or directly on the HTML element.

```
.background, #background, body{  
background: rgb(199, 186, 176) }
```

If only the background color should be changed can be used:

```
.background{ background-color: rgb(199,  
186, 176) }
```

This example shows the color as background, it is applied via the CSS property "background".

To optimize and compress your CSS code, you can use our [online CSS compressor and optimizer](#) based on csstidy. If you want to create a linear or radial gradient as background or border, check our [CSS Gradient Generator](#).

Hey! You found this booklet interesting? Support Converting Colors with the new Membership Option!

The pro membership hides all ads, plus gives you double the colors in the color bucket, and more awesome pro features!

[Learn more, Memberships starting at \\$2.50/m!](#)

**Follow me
on Twitter!**

@ConvertingColor