

# Converting Colors

HunterLab(71.0820, 7.8985,  
11.3837)

Have a look what the booklet for  
HunterLab(71.0820, 7.8985,  
11.3837) contains.

<b>HunterLab(71.0820, 7.8985, 11.3837)</b> .....	3
<b><i>Conversions</i></b> .....	4
<b><i>Details</i></b> .....	6
<b><i>Harmonies</i></b> .....	12
<b><i>Previews</i></b> .....	24
<b><i>Color Blindness Simulation</i></b> .....	28
<b><i>CSS Examples</i></b> .....	31

# Color

**HunterLab(71.0820, 7.8985,  
11.3837)**

# Conversions

## Conversions Part 1

Format	Color
Hex	DAB4AC
RGB	218, 180, 172
RGB Percent	85%, 71%, 67%
CMY	0.1451, 0.2941, 0.3255
CMYK	0.00, 0.17, 0.21, 0.15
HSL	10°, 38%, 76%
HSV	10°, 21%, 85%
XYZ	52.6811, 50.5265, 46.0057
YIQ	190.4500, 25.2160, 5.5680

# Conversions

## Conversions Part 2

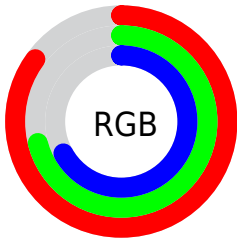
Format	Color
RYB	218, 182, 172
Decimal	14333100
CIELab	76.39, 12.48, 9.22
CIELCh	76, 15.513, 36.465
Yxy	50.5288, 0.3531, 0.3386
Android (android.graphics.Color)	4292523180 (0xFFDAB4AC)
YUV	190.4500, -9.0958, 24.1614
Hunter-Lab	71.0820, 7.8985, 11.3837

# Details

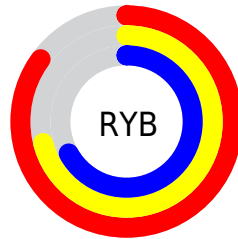
The HunterLab color  $71.0820, 7.8985, 11.3837$  is a light color, and the websafe version is hex  $CC9999$ . A complement of this color would be  $77.4108, -13.9161, -3.3466$ , and the grayscale version is  $71.9788, -3.8406, 3.9107$ .

A 20% lighter version of the original color is  $93.1649, 0.0106, 11.1589$ , and  $49.2100, 7.7569, 9.0496$  is the 20% darker color. If you saturate the color by 10%, you get  $65.5394, 14.2796, 14.4553$ , and if you desaturate by 10%, it is  $76.9320, 1.8583, 8.1930$ .

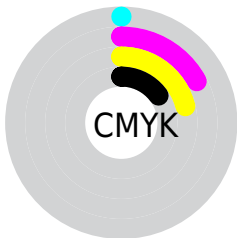
# Distribution



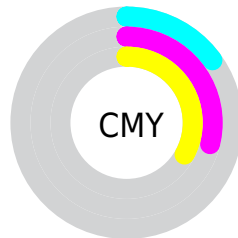
- Red (85%)
- Green (71%)
- Blue (67%)



- Red (85%)
- Yellow (71%)
- Blue (67%)



- Cyan (0%)
- Magenta (17%)
- Yellow (21%)
- Black (15%)




- Cyan (15%)
- Magenta (29%)
- Yellow (33%)

# Brightness & Saturation Gradients

These gradients show how the HunterLab color 71.0820, 7.8985, 11.3837 changes by changing the brightness by 10 percent. The first figure shows a shift by +10% for each color and the second figure -10%.


Similar to the brightness gradients but the following saturation gradients show a change of the HunterLab color 71.0820, 7.8985, 11.3837 by changing the saturation by 10% instead.




 71.0820, 7.8985,  
11.3837

 71.0820, 7.8985,  
11.3837

197.1624, 5.6479,  
21.6021

 59.8613, 7.8862,  
10.3049


 95.3718, 7.7314,  
13.5679

 49.3009, 7.8058,  
9.2283


108.3793, 7.5672,  
14.6751

 39.4470, 7.6457,  
8.1497


121.9296, 7.3538,  
15.7948

 30.3542, 7.3938,  
7.0608

136.0018, 7.0944,  
16.9277

 22.0927, 7.0334,  
5.9476

150.5772, 6.7918,  
18.0744

 14.7565, 6.5403,  
4.7851

165.6391, 6.4486,

 8.4126, 6.1695,

19.2356

5.0008

181.1721, 6.0667,  
20.4114

0.0000, NaN, NaN

0.0000, NaN, NaN

■ 71.0820, 7.8985,  
11.3837

■ 71.0820, 7.8985,  
11.3837

■ 65.5394, 14.2796,  
14.4553

■ 76.9320, 1.8583,  
8.1930

■ 60.3479, 21.0121,  
17.3535

■ 83.0447, -3.8571,  
4.9144

■ 55.5667, 28.0578,  
20.0063

■ 89.3889, -9.2824,  
1.5716

■ 51.2628, 35.3157,  
22.3139

■ 95.7950, -15.2481,  
0.2063

■ 47.5099, 42.5879,

■ 96.7706, -16.7592,

24.1521

1.3714

■ 44.3815, 49.5564,  
25.3881

■ 41.9384, 55.7923,  
25.9224

■ 40.3577, 60.3135,  
25.9241

# Harmonies

## Analogous

The Analogous color harmony consists of three colors that are next to each other on the color wheel.



71.0836, 10.7558, 5.3623



71.0820, 7.8985, 11.3837



71.0836, 1.9189, 15.0957

# Triad

The Triadic color harmony groups three colors that are evenly spaced from another and form a triangle on the color wheel.



71.0836, 7.8961, 11.3848



71.0836, -16.2615, 9.0171



71.0836, -2.2029, -10.7824

# Complementary

The Complementary color scheme is a pair of colors which are on the opposite of each other on the color wheel.



71.0820, 7.8985, 11.3837



77.4108, -13.9161, -3.3466

# Split Complementary

Split-complementary colors differ from the complementary color scheme. The scheme consists of three colors, the original color and two neighbors of the complement color.



71.0836, -9.3371, -9.5519



71.0820, 7.8985, 11.3837



71.0836, -17.2651, 2.3432

# Square

The Square scheme is like the rectangle color scheme, but the four colors are evenly spaced on the color wheel.



71.0836, 7.8961, 11.3848



71.0836, -11.9802, 13.8286



71.0836, -14.7793, -4.5686



71.0836, 4.7747, -7.7789



# Rectangle

The Rectangle color scheme consists of four colors that form a rectangle on the color wheel.



71.0820, 7.8985, 11.3837



71.0836, -2.9256, 15.9917



71.0836, -14.7793, -4.5686



71.0836, -4.6636, -10.8543

# Sweetspot

The Sweet Spot groups the original color and five complimentary colors.



71.0836, 7.8961, 11.3848



95.5267, -1.2717, 7.8194



70.0578, 18.4020, -8.2948



43.9727, -0.3800, 3.7370

0.0000, NaN, NaN



46.2646, -2.4686, 2.5136



# Same Dimension

The Same Dimension uses a secret algorithm to generate beautiful new colors.



71.0836, 7.8961, 11.3848



82.1186, 12.5207, 15.1283



77.7426, -3.7113, 18.0733



36.6278, 0.4163, 3.5968



31.4121, 46.1256, 20.1635



8.6712, 9.7110, 5.5132



# Inverse Universe

The Inverse Universe completely reimagines the original color for something new.



77.4108, -13.9161, -3.3466



91.0903, -18.4709, -5.7734



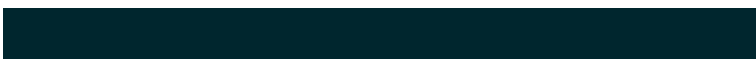
70.3673, -2.6248, -12.5743



37.9788, -4.2253, 0.4545



47.6928, -18.1961, -20.3318

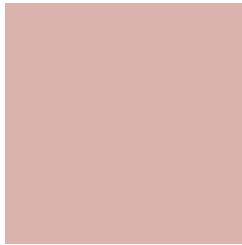


12.5585, -5.1839, -4.5065



# Previews

## White Background



This preview shows how the HunterLab color 71.0820, 7.8985, 11.3837 looks on a white background.

## Color Contrast Check

Large Text (above 18pt) WCAG AA × Fail

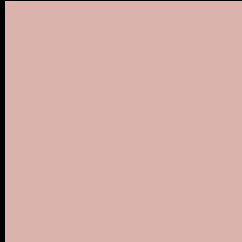
Any Text WCAG AA × Fail

Large Text (above 18pt) WCAG AAA × Fail

Any Text WCAG AAA × Fail



# Black Background



This preview shows how the HunterLab color 71.0820, 7.8985, 11.3837 looks on a black background.

## Color Contrast Check

Large Text (above 18pt) WCAG AA ✓ Pass

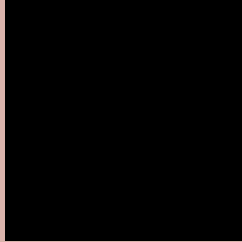
Any Text WCAG AA ✓ Pass

Large Text (above 18pt) WCAG AAA ✓ Pass

Any Text WCAG AAA ✓ Pass

If you want to check with other color combinations, try the [Color Contrast Checker](#).

## HunterLab 71.0820, 7.8985, 11.3837 Background



This preview shows how black text looks on a background with the HunterLab color 71.0820, 7.8985, 11.3837.



This preview shows how white text looks on a background with the HunterLab color 71.0820, 7.8985,



# Color Blindness Simulation

Color vision deficiency is a very complex topic, and I could not describe the different causes any better than Wikipedia does, so if you want to learn more, you should check out their [article about color blindness](#).

## Dichromacy



### Original Color

71.0820, 7.8985, 11.3837

### Protanopia

71.2061, -3.4684, 9.6155

### Deuteranopia

71.1200, 5.0852, 11.3753



## Tritanopia

71.0081, 13.0930, 2.8280

# Trichromacy



## Original Color

71.0820, 7.8985, 11.3837

## Protanomaly

71.0560, 0.5422, 9.9523

## Deuteranomaly

71.0446, 6.3086, 11.3157

## Tritanomaly

70.9659, 11.0961, 6.0366

# Monochromacy



## Original Color

71.0820, 7.8985, 11.3837

## Achromatopsia

71.7578, -3.8288, 3.8987

## Achromatomaly

71.2854, 0.2652, 6.6692

# CSS Examples

## Text

The CSS property to change the color of the text to HunterLab 71.0820, 7.8985, 11.3837 is called "color". The color property can be set on classes, ids or directly on the HTML element.

This example shows how text in the color `rgb(218, 180, 172)` looks like.

```
.text, #text, p{  
    color:rgb(218, 180, 172)  
}
```

If you want to add a text shadow in that color use the text-shadow property, you can generate a text shadow directly with our [CSS Text Shadow Generator](#).

Here you see how black text with a 4 pixel rgb(218, 180, 172) colored shadow looks like.

```
.shadow{ text-shadow: 4px 4px 2px rgb(218, 180, 172) }
```

## Border

The CSS property to change the border of an element to HunterLab 71.0820, 7.8985, 11.3837 is called "border". The border property can be set on classes, ids or directly on the HTML element.

This example shows the color as border, it can be applied via the CSS property "border" or "border-color".

```
.border, #border, table{ border:4px solid rgb(218, 180, 172) }
```



If only the border color should be changed use the property `border-color`.

```
.border{ border-color:rgb(218, 180, 172) }
```

If you want to add a box shadow in that color use:

Here you see how a box with a 4 pixel `rgb(218, 180, 172)` colored shadow looks like.

```
.boxshadow{ -moz-box-shadow:4px 4px 4px  
4px rgb(218, 180, 172); -webkit-box-  
shadow:4px 4px 4px 4px rgb(218, 180, 172);  
box-shadow:4px 4px 4px 4px rgb(218, 180,  
172) }
```

# Background

The CSS property to change the background color of an element to HunterLab 71.0820, 7.8985, 11.3837 is called "background". The background property can be set on classes, ids or directly on the HTML element.

```
.background, #background, body{  
background: rgb(218, 180, 172) }
```

If only the background color should be changed can be used:

```
.background{ background-color: rgb(218,  
180, 172) }
```

This example shows the color as background, it is applied via the CSS property "background".

To optimize and compress your CSS code, you can use our [online CSS compressor and optimizer](#) based on csstidy. If you want to create a linear or radial gradient as background or border, check our [CSS Gradient Generator](#).

Hey! You found this booklet interesting? Support Converting Colors with the new Membership Option!

The pro membership hides all ads, plus gives you double the colors in the color bucket, and more awesome pro features!

**[Learn more, Memberships starting at \\$2.50/m!](#)**

**Follow me  
on Twitter!**

@ConvertingColor