

# Converting Colors

HunterLab(71.1138, 6.9166,  
9.8198)

Have a look what the booklet for  
HunterLab(71.1138, 6.9166, 9.8198)  
contains.

<b>HunterLab(71.1543, 6.8937, 9.7401)</b> .....	3
<b><i>Conversions</i></b> .....	4
<b><i>Details</i></b> .....	6
<b><i>Harmonies</i></b> .....	12
<b><i>Previews</i></b> .....	24
<b><i>Color Blindness Simulation</i></b> .....	28
<b><i>CSS Examples</i></b> .....	31

# Color

**HunterLab(71.1543, 6.8937,  
9.7401)**

# Conversions

## Conversions Part 1

<b>Format</b>	<b>Color</b>
Hex	D7B5B0
RGB	215, 181, 176
RGB Percent	84%, 71%, 69%
CMY	0.1569, 0.2902, 0.3098
CMYK	0.00, 0.16, 0.18, 0.16
HSL	8°, 33%, 77%
HSV	8°, 18%, 84%
XYZ	52.3846, 50.6293, 48.0857
YIQ	190.5960, 21.8690, 5.6530

# Conversions

## Conversions Part 2

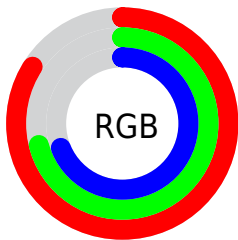
Format	Color
R <sub>Y</sub> B	215, 182, 176
Decimal	14136752
CIE Lab	76.46, 11.43, 7.10
CIE LCh	76, 13.458, 31.836
Yxy	50.6316, 0.3467, 0.3351
Android (android.graphics.Color)	4292326832 (0xFFD7B5B0)
YUV	190.5960, -7.1958, 21.4023
Hunter-Lab	71.1543, 6.8937, 9.7401

# Details

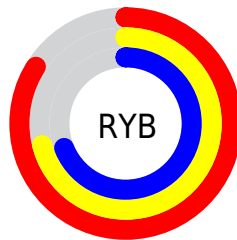
The HunterLab color  $71.1543, 6.8937, 9.7401$  is a light color, and the websafe version is hex  $CC9999$ . A complement of this color would be  $77.6067, -13.4112, -1.5304$ , and the grayscale version is  $72.0336, -3.8435, 3.9137$ .

A 20% lighter version of the original color is  $93.6240, 0.2933, 9.3489$ , and  $49.3631, 7.1059, 7.6382$  is the 20% darker color. If you saturate the color by 10%, you get  $65.3687, 13.5798, 12.5897$ , and if you desaturate by 10%, it is  $77.2610, 0.5394, 6.8493$ .

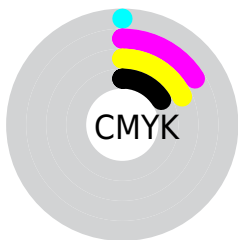
# Distribution



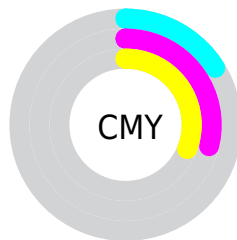
- Red (84%)
- Green (71%)
- Blue (69%)



- Red (84%)
- Yellow (71%)
- Blue (69%)



- Cyan (0%)
- Magenta (16%)
- Yellow (18%)
- Black (16%)




- Cyan (16%)
- Magenta (29%)
- Yellow (31%)


# Brightness & Saturation Gradients

These gradients show how the HunterLab color 71.1543, 6.8937, 9.7401 changes by changing the brightness by 10 percent. The first figure shows a shift by +10% for each color and the second figure -10%.


Similar to the brightness gradients but the following saturation gradients show a change of the HunterLab color 71.1543, 6.8937, 9.7401 by changing the saturation by 10% instead.





 71.1543, 6.8937,  
9.7401

 71.1543, 6.8937,  
9.7401

197.2640, 4.2743,  
19.1662

 59.9296, 6.9311,  
8.7734


 95.4516, 6.6341,  
11.7195

 49.3649, 6.9029,  
7.8173


108.4625, 6.4263,  
12.7323

 39.5064, 6.7981,  
6.8694

122.0161, 6.1709,  
13.7616

 30.4087, 6.6051,  
5.9247

136.0915, 5.8710,  
14.8079

 22.1417, 6.3078,  
4.9738

150.6701, 5.5293,  
15.8715

 14.7993, 5.8829,  
4.0000

165.7349, 5.1479,

 8.4537, 5.5574,

16.9523

3.9412

181.2708, 4.7290,  
18.0506

0.0000, NaN, NaN

0.0000, NaN, NaN

■ 71.1543, 6.8937,  
9.7401

■ 71.1543, 6.8937,  
9.7401

■ 65.3687, 13.5798,  
12.5897

■ 77.2610, 0.5394,  
6.8493

■ 59.9523, 20.6071,  
15.3575

■ 83.6409, -5.5002,  
3.9356

■ 54.9706, 27.9326,  
17.9846

■ 90.2605, -11.2610,  
1.0124

■ 50.4991, 35.4411,  
20.3807

■ 96.5335, -17.6136,  
1.0679

■ 46.6212, 42.9062,

22.4216

■ 43.4215, 49.9632,  
23.9585

■ 40.9694, 56.1269,  
24.8554

■ 39.2934, 60.8787,  
25.1049

■ 39.0617, 61.5583,  
25.1473

# Harmonies

## Analogous

The Analogous color harmony consists of three colors that are next to each other on the color wheel.



71.1559, 8.8414, 4.2450



71.1543, 6.8937, 9.7401



71.1559, 2.0650, 13.3860

# Triad

The Triadic color harmony groups three colors that are evenly spaced from another and form a triangle on the color wheel.



71.1559, 6.8914, 9.7412



71.1559, -14.2654, 9.1489



71.1559, -3.4082, -8.7647

# Complementary

The Complementary color scheme is a pair of colors which are on the opposite of each other on the color wheel.



71.1543, 6.8937, 9.7401



77.6067, -13.4112, -1.5304

# Split Complementary

Split-complementary colors differ from the complementary color scheme. The scheme consists of three colors, the original color and two neighbors of the complement color.



71.1559, -9.4819, -7.1666



71.1543, 6.8937, 9.7401



71.1559, -15.6172, 3.4994

# Square

The Square scheme is like the rectangle color scheme, but the four colors are evenly spaced on the color wheel.



71.1559, 6.8914, 9.7412



71.1559, -10.1379, 13.0658



71.1559, -13.8962, -2.5415



71.1559, 2.7668, -6.7373



# Rectangle

The Rectangle color scheme consists of four colors that form a rectangle on the color wheel.



71.1543, 6.8937, 9.7401



71.1559, -2.0553, 14.4545



71.1559, -13.8962, -2.5415



71.1559, -5.5291, -8.6332

# Sweetspot

The Sweet Spot groups the original color and five complimentary colors.



71.1559, 6.8914, 9.7412



96.0826, -1.6487, 7.2183



70.8336, 15.2434, -7.3687



44.2004, -0.5196, 3.4554

0.0000, NaN, NaN



46.2646, -2.4686, 2.5136



# Same Dimension

The Same Dimension uses a secret algorithm to generate beautiful new colors.



71.1559, 6.8914, 9.7412



83.4079, 11.6153, 13.2332



76.7554, -2.8641, 15.5176



35.6020, 0.6213, 3.3621



30.3511, 47.1438, 19.5276



8.0121, 9.8478, 5.1094



# Inverse Universe

The Inverse Universe completely reimagines the original color for something new.



77.6067, -13.4112, -1.5304



92.9309, -18.4106, -3.4185



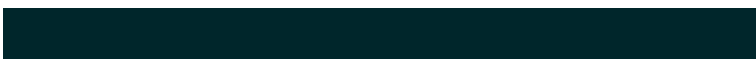
71.6776, -3.9315, -9.0808



37.1797, -4.3320, 0.6081



49.4033, -21.1576, -16.0768

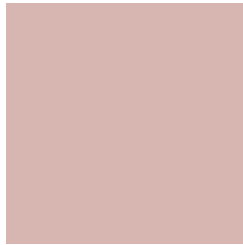


12.4487, -5.5988, -3.4735



# Previews

## White Background



This preview shows how the HunterLab color 71.1543, 6.8937, 9.7401 looks on a white background.

## Color Contrast Check

Large Text (above 18pt) WCAG AA × Fail

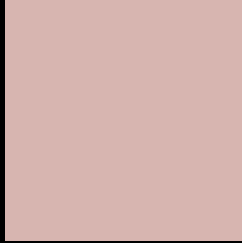
Any Text WCAG AA × Fail

Large Text (above 18pt) WCAG AAA × Fail

Any Text WCAG AAA × Fail



# Black Background



This preview shows how the HunterLab color 71.1543, 6.8937, 9.7401 looks on a black background.

## Color Contrast Check

Large Text (above 18pt) WCAG AA ✓ Pass

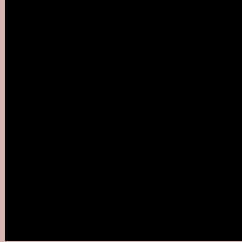
Any Text WCAG AA ✓ Pass

Large Text (above 18pt) WCAG AAA ✓ Pass

Any Text WCAG AAA ✓ Pass

If you want to check with other color combinations, try the [Color Contrast Checker](#).

# HunterLab 71.1543, 6.8937, 9.7401 Background



This preview shows how black text looks on a background with the HunterLab color 71.1543, 6.8937, 9.7401.



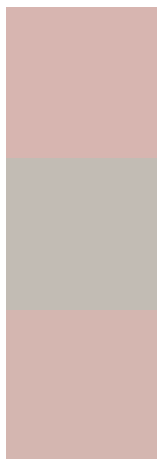
This preview shows how white text looks on a background with the HunterLab color 71.1543, 6.8937,

9.7401.

# Color Blindness Simulation

Color vision deficiency is a very complex topic, and I could not describe the different causes any better than Wikipedia does, so if you want to learn more, you should check out their [article about color blindness](#).

## Dichromacy



### Original Color

71.1543, 6.8937, 9.7401

### Protanopia

71.2257, -3.1747, 7.8893

### Deuteranopia

71.1249, 5.3209, 9.6803



## Tritanopia

71.2725, 11.1403, 2.6278

# Trichromacy



## Original Color

71.1543, 6.8937, 9.7401

## Protanomaly

71.0698, 0.8137, 8.2282

## Deuteranomaly

71.2296, 5.6716, 9.8013

## Tritanomaly

71.2647, 9.2983, 5.4272

# Monochromacy



## Original Color

71.1543, 6.8937, 9.7401

## Achromatopsia

72.1800, -3.8513, 3.9217

## Achromatomaly

71.6695, 0.2357, 5.7362

# CSS Examples

## Text

The CSS property to change the color of the text to HunterLab 71.1543, 6.8937, 9.7401 is called "color". The color property can be set on classes, ids or directly on the HTML element.

This example shows how text in the color `rgb(215, 181, 176)` looks like.

```
.text, #text, p{  
    color:rgb(215, 181, 176)  
}
```

If you want to add a text shadow in that color use the text-shadow property, you can generate a text shadow directly with our [CSS Text Shadow Generator](#).

Here you see how black text with a 4 pixel rgb(215, 181, 176) colored shadow looks like.

```
.shadow{ text-shadow: 4px 4px 2px rgb(215, 181, 176) }
```

## Border

The CSS property to change the border of an element to HunterLab 71.1543, 6.8937, 9.7401 is called "border". The border property can be set on classes, ids or directly on the HTML element.

This example shows the color as border, it can be applied via the CSS property "border" or "border-color".

```
.border, #border, table{ border:4px solid rgb(215, 181, 176) }
```



If only the border color should be changed use the property `border-color`.

```
.border{ border-color:rgb(215, 181, 176) }
```

If you want to add a box shadow in that color use:

Here you see how a box with a 4 pixel `rgb(215, 181, 176)` colored shadow looks like.

```
.boxshadow{ -moz-box-shadow:4px 4px 4px  
4px rgb(215, 181, 176); -webkit-box-  
shadow:4px 4px 4px 4px rgb(215, 181, 176);  
box-shadow:4px 4px 4px 4px rgb(215, 181,  
176) }
```

# Background

The CSS property to change the background color of an element to HunterLab 71.1543, 6.8937, 9.7401 is called "background". The background property can be set on classes, ids or directly on the HTML element.

```
.background, #background, body{  
background: rgb(215, 181, 176) }
```

If only the background color should be changed can be used:

```
.background{ background-color: rgb(215,  
181, 176) }
```

This example shows the color as background, it is applied via the CSS property "background".

To optimize and compress your CSS code, you can use our [online CSS compressor and optimizer](#) based on csstidy. If you want to create a linear or radial gradient as background or border, check our [CSS Gradient Generator](#).

Hey! You found this booklet interesting? Support Converting Colors with the new Membership Option!

The pro membership hides all ads, plus gives you double the colors in the color bucket, and more awesome pro features!

**[Learn more, Memberships starting at \\$2.50/m!](#)**

**Follow me  
on Twitter!**

@ConvertingColor