

Converting Colors

HunterLab(71.1673, 1.1587,
8.3369)

Have a look what the booklet for
HunterLab(71.1673, 1.1587, 8.3369)
contains.

HunterLab(71.1682, 1.1494, 8.3439)	3
<i>Conversions</i>	4
<i>Details</i>	6
<i>Harmonies</i>	12
<i>Previews</i>	24
<i>Color Blindness Simulation</i>	28
<i>CSS Examples</i>	31

Color

**HunterLab(71.1682, 1.1494,
8.3439)**

Conversions

Conversions Part 1

Format	Color
Hex	CBB9B3
RGB	203, 185, 179
RGB Percent	80%, 73%, 70%
CMY	0.2039, 0.2745, 0.2980
CMYK	0.00, 0.09, 0.12, 0.20
HSL	15°, 19%, 75%
HSV	15°, 12%, 80%
XYZ	50.1143, 50.6491, 49.7827
YIQ	189.6980, 12.6540, 1.9500

Conversions

Conversions Part 2

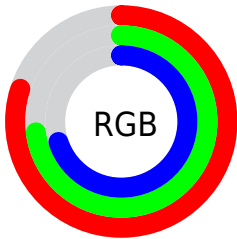
Format	Color
R _Y B	203, 187, 179
Decimal	13351347
CIE Lab	76.47, 5.37, 5.35
CIE LCh	76, 7.581, 44.876
Yxy	50.6514, 0.3329, 0.3364
Android (android.graphics.Color)	4291541427 (0xFFCBB9B3)
YUV	189.6980, -5.2741, 11.6659
Hunter-Lab	71.1682, 1.1494, 8.3439

Details

The HunterLab color $71.1682, 1.1494, 8.3439$ is a light color, and the websafe version is hex `CCCCCC`. A complement of this color would be $73.3669, -8.3587, -0.5978$, and the grayscale version is $71.6495, -3.8230, 3.8929$.

A 20% lighter version of the original color is $94.9572, -1.3347, 9.4138$, and $49.3948, 1.7763, 6.7750$ is the 20% darker color. If you saturate the color by 10%, you get $66.2251, 5.9226, 11.6669$, and if you desaturate by 10%, it is $76.3203, -3.3357, 4.8513$.

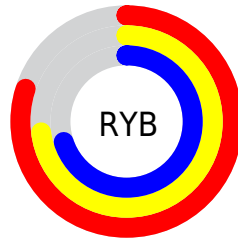
Distribution



Red (80%)

Green (73%)

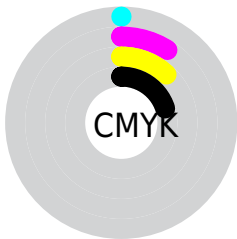
Blue (70%)



Red (80%)

Yellow (73%)

Blue (70%)

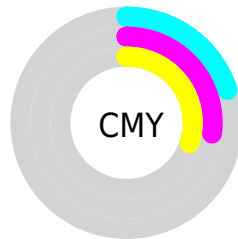


Cyan (0%)

Magenta (9%)

Yellow (12%)

Black (20%)



Cyan (20%)

Magenta (27%)

Yellow (30%)

Brightness & Saturation Gradients

These gradients show how the HunterLab color 71.1682, 1.1494, 8.3439 changes by changing the brightness by 10 percent. The first figure shows a shift by +10% for each color and the second figure -10%.

Similar to the brightness gradients but the following saturation gradients show a change of the HunterLab color 71.1682, 1.1494, 8.3439 by changing the saturation by 10% instead.

■ 71.1682, 1.1494,
8.3439

■ 71.1682, 1.1494,
8.3439

197.2835, -3.6315,
17.1251

■ 59.9427, 1.4794,
7.4679

■ 95.4669, 0.3456,
10.1573

■ 49.3772, 1.7598,
6.6089

108.4784, -0.1176,
11.0931

■ 39.5178, 1.9830,
5.7664

122.0327, -0.6188,
12.0490

■ 30.4191, 2.1412,
4.9374

136.1087, -1.1561,
13.0249

■ 22.1511, 2.2238,
4.1164

150.6879, -1.7274,
14.0206

■ 14.8075, 2.2148,
3.2928

165.7533, -2.3314,

■ 8.4615, 2.3146,

15.0360

3.0809

181.2898, -2.9665,
16.0709

0.0000, NaN, NaN

0.0000, NaN, NaN

■ 71.1682, 1.1494,
8.3439

■ 71.1682, 1.1494,
8.3439

■ 66.2251, 5.9226,
11.6669

■ 76.3203, -3.3357,
4.8513

■ 61.5143, 11.0141,
14.7754

■ 81.6533, -7.5551,
1.2172

■ 57.0707, 16.4349,
17.6157

■ 87.1491, -11.5402,
-2.5340

■ 52.9334, 22.1766,
20.1178

■ 92.6082, -16.3435,
-3.7915

■ 49.1473, 28.1937,

■ 95.6225, -20.9164,

22.1955

-0.1048

■ 45.7619, 34.3848,
23.7510

■ 42.8285, 40.5722,
24.6893

■ 40.3936, 46.4913,
24.9497

■ 38.7883, 50.8644,
24.7916

Harmonies

Analogous

The Analogous color harmony consists of three colors that are next to each other on the color wheel.



71.1698, 2.9810, 5.5361



71.1682, 1.1494, 8.3439



71.1698, -1.9946, 9.9152

Triad

The Triadic color harmony groups three colors that are evenly spaced from another and form a triangle on the color wheel.



71.1698, 1.1474, 8.3450



71.1698, -10.3312, 5.5629



71.1698, -2.0238, -2.7562

Complementary

The Complementary color scheme is a pair of colors which are on the opposite of each other on the color wheel.



71.1682, 1.1494, 8.3439



73.3669, -8.3587, -0.5978

Split Complementary

Split-complementary colors differ from the complementary color scheme. The scheme consists of three colors, the original color and two neighbors of the complement color.



71.1698, -5.5901, -2.7481



71.1682, 1.1494, 8.3439



71.1698, -10.3387, 2.1707

Square

The Square scheme is like the rectangle color scheme, but the four colors are evenly spaced on the color wheel.



71.1698, 1.1474, 8.3450



71.1698, -8.5977, 8.3638



71.1698, -8.6183, -0.9074



71.1698, 1.1256, -0.9289

Rectangle

The Rectangle color scheme consists of four colors that form a rectangle on the color wheel.



71.1682, 1.1494, 8.3439



71.1698, -4.3859, 10.1000



71.1698, -8.6183, -0.9074



71.1698, -3.2147, -2.9709

Sweetspot

The Sweet Spot groups the original color and five complimentary colors.



71.1698, 1.1474, 8.3450



97.2508, -3.0531, 7.3033



69.9776, 7.1906, -1.5105



44.7555, -1.2110, 3.5400

0.0000, NaN, NaN



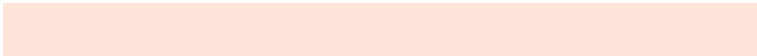
46.2646, -2.4686, 2.5136

Same Dimension

The Same Dimension uses a secret algorithm to generate beautiful new colors.



71.1698, 1.1474, 8.3450



90.5561, 2.9104, 11.8368



74.7558, -4.9102, 12.1530



34.1498, 0.0165, 3.5436



31.1418, 39.9775, 19.8893



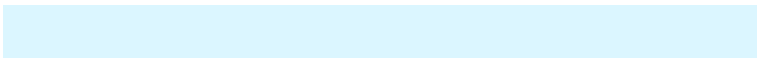
7.9029, 6.7789, 4.9884

Inverse Universe

The Inverse Universe completely reimagines the original color for something new.



73.3669, -8.3587, -0.5978



93.9577, -11.8144, -2.0108



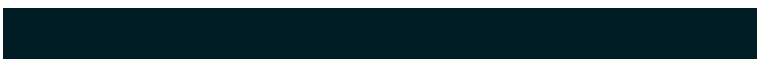
69.7095, -2.3603, -5.1420



34.9760, -3.5569, 0.1810



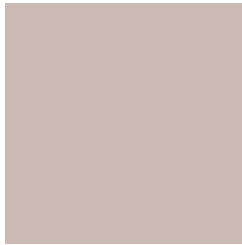
41.5105, -11.9962, -25.9882



10.0238, -3.5537, -4.8575

Previews

White Background



This preview shows how the HunterLab color 71.1682, 1.1494, 8.3439 looks on a white background.

Color Contrast Check

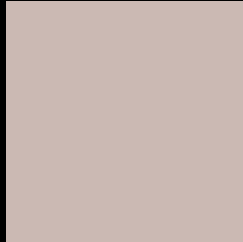
Large Text (above 18pt) WCAG AA × Fail

Any Text WCAG AA × Fail

Large Text (above 18pt) WCAG AAA × Fail

Any Text WCAG AAA × Fail

Black Background



This preview shows how the HunterLab color 71.1682, 1.1494, 8.3439 looks on a black background.

Color Contrast Check

Large Text (above 18pt) WCAG AA ✓ Pass

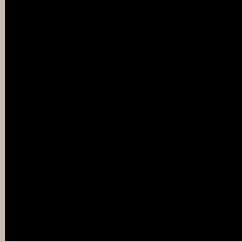
Any Text WCAG AA ✓ Pass

Large Text (above 18pt) WCAG AAA ✓ Pass

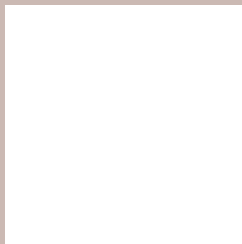
Any Text WCAG AAA ✓ Pass

If you want to check with other color combinations, try the [Color Contrast Checker](#).

HunterLab 71.1682, 1.1494, 8.3439 Background



This preview shows how black text looks on a background with the HunterLab color 71.1682, 1.1494, 8.3439.



This preview shows how white text looks on a background with the HunterLab color 71.1682, 1.1494,

Color Blindness Simulation

Color vision deficiency is a very complex topic, and I could not describe the different causes any better than Wikipedia does, so if you want to learn more, you should check out their [article about color blindness](#).

Dichromacy



Original Color

71.1682, 1.1494, 8.3439

Protanopia

71.2545, -3.0176, 7.4782

Deuteranopia

71.0302, 5.2295, 7.8169



Tritanopia

71.0396, 6.2971, -0.2021

Trichromacy



Original Color

71.1682, 1.1494, 8.3439

Protanomaly

71.2083, -1.6983, 7.8956

Deuteranomaly

71.0124, 3.6824, 7.7700

Tritanomaly

71.0085, 4.2639, 3.1540

Monochromacy



Original Color

71.1682, 1.1494, 8.3439

Achromatopsia

71.7578, -3.8288, 3.8987

Achromatomaly

71.4939, -1.8967, 5.4963

CSS Examples

Text

The CSS property to change the color of the text to HunterLab 71.1682, 1.1494, 8.3439 is called "color". The color property can be set on classes, ids or directly on the HTML element.

This example shows how text in the color `rgb(203, 185, 179)` looks like.

```
.text, #text, p{  
    color:rgb(203, 185, 179)  
}
```

If you want to add a text shadow in that color use the text-shadow property, you can generate a text shadow directly with our [CSS Text Shadow Generator](#).

Here you see how black text with a 4 pixel rgb(203, 185, 179) colored shadow looks like.

```
.shadow{ text-shadow: 4px 4px 2px rgb(203, 185, 179) }
```

Border

The CSS property to change the border of an element to HunterLab 71.1682, 1.1494, 8.3439 is called "border". The border property can be set on classes, ids or directly on the HTML element.

This example shows the color as border, it can be applied via the CSS property "border" or "border-color".

```
.border, #border, table{ border:4px solid rgb(203, 185, 179) }
```


If only the border color should be changed use the property `border-color`.

```
.border{ border-color:rgb(203, 185, 179) }
```

If you want to add a box shadow in that color use:

Here you see how a box with a 4 pixel `rgb(203, 185, 179)` colored shadow looks like.

```
.boxshadow{ -moz-box-shadow:4px 4px 4px  
4px rgb(203, 185, 179); -webkit-box-  
shadow:4px 4px 4px 4px rgb(203, 185, 179);  
box-shadow:4px 4px 4px 4px rgb(203, 185,  
179) }
```

Background

The CSS property to change the background color of an element to HunterLab 71.1682, 1.1494, 8.3439 is called "background". The background property can be set on classes, ids or directly on the HTML element.

```
.background, #background, body{  
background: rgb(203, 185, 179) }
```

If only the background color should be changed can be used:

```
.background{ background-color: rgb(203,  
185, 179) }
```

This example shows the color as background, it is applied via the CSS property "background".

To optimize and compress your CSS code, you can use our [online CSS compressor and optimizer](#) based on csstidy. If you want to create a linear or radial gradient as background or border, check our [CSS Gradient Generator](#).

Hey! You found this booklet interesting? Support Converting Colors with the new Membership Option!

The pro membership hides all ads, plus gives you double the colors in the color bucket, and more awesome pro features!

[Learn more, Memberships starting at \\$2.50/m!](#)

**Follow me
on Twitter!**

@ConvertingColor