

Converting Colors

HunterLab(71.1673, 4.4438,
9.4888)

Have a look what the booklet for
HunterLab(71.1673, 4.4438, 9.4888)
contains.

HunterLab(71.2341, 4.2591, 9.3481)	3
<i>Conversions</i>	4
<i>Details</i>	6
<i>Harmonies</i>	12
<i>Previews</i>	24
<i>Color Blindness Simulation</i>	28
<i>CSS Examples</i>	31

Color

**HunterLab(71.2341, 4.2591,
9.3481)**

Conversions

Conversions Part 1

Format	Color
Hex	D2B7B1
RGB	210, 183, 177
RGB Percent	82%, 72%, 69%
CMY	0.1765, 0.2823, 0.3059
CMYK	0.00, 0.13, 0.16, 0.18
HSL	11°, 27%, 76%
HSV	11°, 16%, 82%
XYZ	51.4477, 50.7430, 48.6778
YIQ	190.3890, 18.0180, 3.8580

Conversions

Conversions Part 2

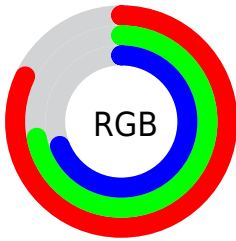
Format	Color
R_{YB}	210, 184, 177
Decimal	13809585
CIE _{Lab}	76.52, 8.68, 6.60
CIE _{LCh}	77, 10.900, 37.239
Yxy	50.7452, 0.3410, 0.3363
Android (android.graphics.Color)	4291999665 (0xFFD2B7B1)
YUV	190.3890, -6.6008, 17.1988
Hunter-Lab	71.2341, 4.2591, 9.3481

Details

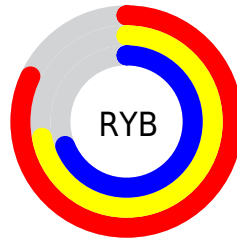
The HunterLab color $71.2341, 4.2591, 9.3481$ is a light color, and the websafe version is hex `CCCCCC`. A complement of this color would be $75.6206, -11.1098, -1.4033$, and the grayscale version is $71.9450, -3.8388, 3.9089$.

A 20% lighter version of the original color is $94.2742, -0.6041, 9.5975$, and $49.3853, 4.4365, 7.6154$ is the 20% darker color. If you saturate the color by 10%, you get $65.8113, 10.0952, 12.3930$, and if you desaturate by 10%, it is $76.9241, -1.2624, 6.1988$.

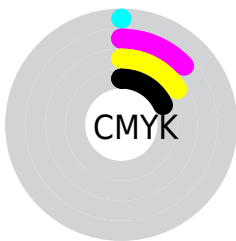
Distribution



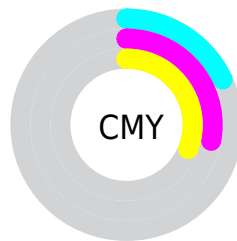
- Red (82%)
- Green (72%)
- Blue (69%)



- Red (82%)
- Yellow (72%)
- Blue (69%)



- Cyan (0%)
- Magenta (13%)
- Yellow (16%)
- Black (18%)



- Cyan (18%)
- Magenta (28%)
- Yellow (31%)

Brightness & Saturation Gradients

These gradients show how the HunterLab color 71.2341, 4.2591, 9.3481 changes by changing the brightness by 10 percent. The first figure shows a shift by +10% for each color and the second figure -10%.

Similar to the brightness gradients but the following saturation gradients show a change of the HunterLab color 71.2341, 4.2591, 9.3481 by changing the saturation by 10% instead.

■ 71.2341, 4.2591,
9.3481

■ 71.2341, 4.2591,
9.3481

197.3761, 0.6607,
18.5888

■ 60.0049, 4.4286,
8.4076

■ 95.5396, 3.7534,
11.2797

■ 49.4356, 4.5396,
7.4795

108.5543, 3.4301,
12.2703

■ 39.5720, 4.5824,
6.5621

122.1116, 3.0633,
13.2785

■ 30.4688, 4.5471,
5.6509

136.1906, 2.6559,
14.3046

■ 22.1958, 4.4198,
4.7379

150.7725, 2.2100,
15.3487

■ 14.8466, 4.1797,
3.8080

165.8407, 1.7277,

■ 8.4988, 4.0218,

16.4108

3.6796

181.3798, 1.2108,
17.4908

0.0000, NaN, NaN

0.0000, NaN, NaN

■ 71.2341, 4.2591,
9.3481

■ 71.2341, 4.2591,
9.3481

■ 65.8113, 10.0952,
12.3930

■ 76.9241, -1.2624,
6.1988

■ 60.6912, 16.2686,
15.2895

■ 82.8432, -6.4908,
2.9692

■ 55.9241, 22.7683,
17.9806

■ 88.9655, -11.4604,
-0.3212

■ 51.5671, 29.5403,
20.3854

■ 95.0624, -17.3588,
-0.7333

■ 47.6855, 36.4589,

■ 96.1466, -19.0121,

22.3988

0.5713

■ 44.3482, 43.2988,
23.8979

■ 41.6207, 49.7212,
24.7671

■ 39.5500, 55.3004,
24.9512

■ 38.8603, 57.2940,
24.9486

Harmonies

Analogous

The Analogous color harmony consists of three colors that are next to each other on the color wheel.



71.2357, 6.2943, 5.0552



71.2341, 4.2591, 9.3481



71.2357, 0.0696, 12.0337

Triad

The Triadic color harmony groups three colors that are evenly spaced from another and form a triangle on the color wheel.



71.2357, 4.2569, 9.3492



71.2357, -12.7139, 7.4289



71.2357, -2.5518, -6.1217

Complementary

The Complementary color scheme is a pair of colors which are on the opposite of each other on the color wheel.



71.2341, 4.2591, 9.3481



75.6206, -11.1098, -1.4033

Split Complementary

Split-complementary colors differ from the complementary color scheme. The scheme consists of three colors, the original color and two neighbors of the complement color.



71.2357, -7.5980, -5.3739



71.2341, 4.2591, 9.3481



71.2357, -13.3708, 2.6794

Square

The Square scheme is like the rectangle color scheme, but the four colors are evenly spaced on the color wheel.



71.2357, 4.2569, 9.3492



71.2357, -9.7026, 10.9811



71.2357, -11.5232, -2.0658



71.2357, 2.2914, -4.0424

Rectangle

The Rectangle color scheme consists of four colors that form a rectangle on the color wheel.



71.2341, 4.2591, 9.3481



71.2357, -3.3269, 12.6650



71.2357, -11.5232, -2.0658



71.2357, -4.2814, -6.1950

Sweetspot

The Sweet Spot groups the original color and five complimentary colors.



71.2357, 4.2569, 9.3492



96.2967, -2.0119, 7.4595



70.3778, 11.9236, -4.8173



44.3131, -0.7113, 3.5820

0.0000, NaN, NaN



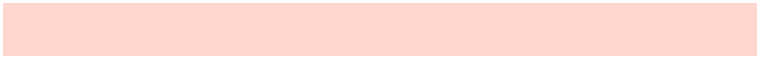
46.2646, -2.4686, 2.5136

Same Dimension

The Same Dimension uses a secret algorithm to generate beautiful new colors.



71.2357, 4.2569, 9.3492



86.3307, 7.8000, 12.9894



75.9760, -3.8846, 14.2877



34.8585, 0.3448, 3.4359



30.5254, 44.1913, 19.5833



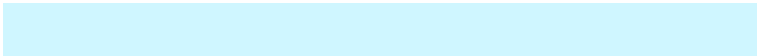
7.9275, 8.3521, 5.0311

Inverse Universe

The Inverse Universe completely reimagines the original color for something new.



75.6206, -11.1098, -1.4033



92.9758, -15.5148, -3.3111



70.6876, -3.1298, -7.6394



36.0915, -3.9700, 0.4137



45.7424, -17.0720, -20.3205



11.2582, -4.6214, -4.0955

Previews

White Background



This preview shows how the HunterLab color 71.2341, 4.2591, 9.3481 looks on a white background.

Color Contrast Check

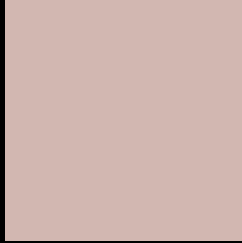
Large Text (above 18pt) WCAG AA × Fail

Any Text WCAG AA × Fail

Large Text (above 18pt) WCAG AAA × Fail

Any Text WCAG AAA × Fail

Black Background



This preview shows how the HunterLab color 71.2341, 4.2591, 9.3481 looks on a black background.

Color Contrast Check

Large Text (above 18pt) WCAG AA ✓ Pass

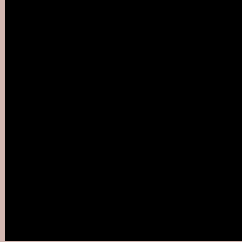
Any Text WCAG AA ✓ Pass

Large Text (above 18pt) WCAG AAA ✓ Pass

Any Text WCAG AAA ✓ Pass

If you want to check with other color combinations, try the [Color Contrast Checker](#).

HunterLab 71.2341, 4.2591, 9.3481 Background



This preview shows how black text looks on a background with the HunterLab color 71.2341, 4.2591, 9.3481.



This preview shows how white text looks on a background with the HunterLab color 71.2341, 4.2591,

9.3481.

Color Blindness Simulation

Color vision deficiency is a very complex topic, and I could not describe the different causes any better than Wikipedia does, so if you want to learn more, you should check out their [article about color blindness](#).

Dichromacy



Original Color

71.2341, 4.2591, 9.3481

Protanopia

71.2257, -3.1747, 7.8893

Deuteranopia

71.1528, 5.4703, 9.2797



Tritanopia

71.0877, 9.2065, 1.3966

Trichromacy



Original Color

71.2341, 4.2591, 9.3481

Protanomaly

71.1701, -0.3603, 8.3196

Deuteranomaly

71.0486, 5.1212, 9.1586

Tritanomaly

71.0827, 7.3532, 4.2456

Monochromacy



Original Color

71.2341, 4.2591, 9.3481

Achromatopsia

71.7578, -3.8288, 3.8987

Achromatomaly

71.3539, -0.9061, 5.8133

CSS Examples

Text

The CSS property to change the color of the text to HunterLab 71.2341, 4.2591, 9.3481 is called "color". The color property can be set on classes, ids or directly on the HTML element.

This example shows how text in the color `rgb(210, 183, 177)` looks like.

```
.text, #text, p{  
    color:rgb(210, 183, 177)  
}
```

If you want to add a text shadow in that color use the text-shadow property, you can generate a text shadow directly with our [CSS Text Shadow Generator](#).

Here you see how black text with a 4 pixel rgb(210, 183, 177) colored shadow looks like.

```
.shadow{ text-shadow: 4px 4px 2px rgb(210, 183, 177) }
```

Border

The CSS property to change the border of an element to HunterLab 71.2341, 4.2591, 9.3481 is called "border".

The border property can be set on classes, ids or directly on the HTML element.

This example shows the color as border, it can be applied via the CSS property "border" or "border-color".

```
.border, #border, table{ border:4px solid rgb(210, 183, 177) }
```


If only the border color should be changed use the property `border-color`.

```
.border{ border-color:rgb(210, 183, 177) }
```

If you want to add a box shadow in that color use:

Here you see how a box with a 4 pixel `rgb(210, 183, 177)` colored shadow looks like.

```
.boxshadow{ -moz-box-shadow:4px 4px 4px  
4px rgb(210, 183, 177); -webkit-box-  
shadow:4px 4px 4px 4px rgb(210, 183, 177);  
box-shadow:4px 4px 4px 4px rgb(210, 183,  
177) }
```

Background

The CSS property to change the background color of an element to HunterLab 71.2341, 4.2591, 9.3481 is called "background". The background property can be set on classes, ids or directly on the HTML element.

```
.background, #background, body{  
background: rgb(210, 183, 177) }
```

If only the background color should be changed can be used:

```
.background{ background-color: rgb(210,  
183, 177) }
```

This example shows the color as background, it is applied via the CSS property "background".

To optimize and compress your CSS code, you can use our [online CSS compressor and optimizer](#) based on csstidy. If you want to create a linear or radial gradient as background or border, check our [CSS Gradient Generator](#).

Hey! You found this booklet interesting? Support Converting Colors with the new Membership Option!

The pro membership hides all ads, plus gives you double the colors in the color bucket, and more awesome pro features!

[Learn more, Memberships starting at \\$2.50/m!](#)

**Follow me
on Twitter!**

@ConvertingColor