

Converting Colors

HunterLab(71.2563, 0.1073,
7.0857)

Have a look what the booklet for
HunterLab(71.2563, 0.1073, 7.0857)
contains.

HunterLab(71.2563, 0.1073, 7.0857)	3
<i>Conversions</i>	4
<i>Details</i>	6
<i>Harmonies</i>	12
<i>Previews</i>	24
<i>Color Blindness Simulation</i>	28
<i>CSS Examples</i>	31

Color

**HunterLab(71.2563, 0.1073,
7.0857)**

Conversions

Conversions Part 1

Format	Color
Hex	C8BAB6
RGB	200, 186, 182
RGB Percent	78%, 73%, 71%
CMY	0.2157, 0.2706, 0.2863
CMYK	0.00, 0.07, 0.09, 0.22
HSL	13°, 14%, 75%
HSV	13°, 9%, 78%
XYZ	49.8219, 50.7746, 51.4306
YIQ	189.7300, 9.6280, 1.7240

Conversions

Conversions Part 2

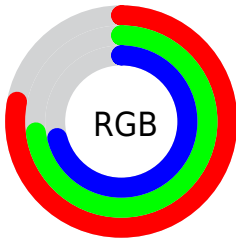
Format	Color
R _Y B	200, 187, 182
Decimal	13154998
CIE Lab	76.54, 4.26, 3.80
CIE LCh	77, 5.705, 41.750
Yxy	50.7768, 0.3277, 0.3340
Android (android.graphics.Color)	4291345078 (0xFFC8BAB6)
YUV	189.7300, -3.8109, 9.0068
Hunter-Lab	71.2563, 0.1073, 7.0857

Details

The HunterLab color $71.2563, 0.1073, 7.0857$ is a light color, and the websafe version is hex `CCCCCC`. A complement of this color would be $73.2081, -7.5263, 0.7233$, and the grayscale version is $71.6579, -3.8235, 3.8933$.

A 20% lighter version of the original color is $95.3611, -1.3655, 8.4451$, and $49.4682, 0.7680, 5.6030$ is the 20% darker color. If you saturate the color by 10%, you get $66.1875, 4.9956, 10.2511$, and if you desaturate by 10%, it is $76.5357, -4.5044, 3.7949$.

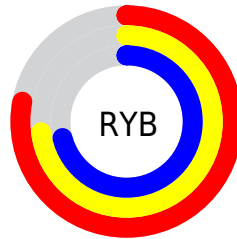
Distribution



Red (78%)

Green (73%)

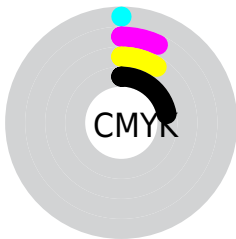
Blue (71%)



Red (78%)

Yellow (73%)

Blue (71%)

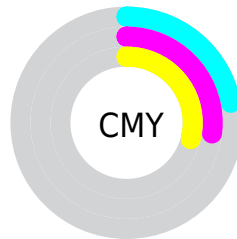


Cyan (0%)

Magenta (7%)

Yellow (9%)

Black (22%)



Cyan (22%)

Magenta (27%)

Yellow (29%)

Brightness & Saturation Gradients

These gradients show how the HunterLab color 71.2563, 0.1073, 7.0857 changes by changing the brightness by 10 percent. The first figure shows a shift by +10% for each color and the second figure -10%.

Similar to the brightness gradients but the following saturation gradients show a change of the HunterLab color 71.2563, 0.1073, 7.0857 by changing the saturation by 10% instead.

■ 71.2563, 0.1073,
7.0857

■ 71.2563, 0.1073,
7.0857

197.4072, -5.0792,
15.3045

■ 60.0259, 0.4927,
6.2884

■ 95.5640, -0.7990,
8.7547

■ 49.4552, 0.8317,
5.5136

108.5798, -1.3102,
9.6236

■ 39.5902, 1.1173,
4.7621

122.1381, -1.8576,
10.5155

■ 30.4855, 1.3429,
4.0328

136.2181, -2.4394,
11.4298

■ 22.2108, 1.4989,
3.3234

150.8010, -3.0538,
12.3663

■ 14.8598, 1.5715,
2.6283

165.8700, -3.6994,

■ 8.5113, 1.7244,

13.3245

2.3134

181.4101, -4.3749,
14.3040

0.0000, NaN, NaN

0.0000, NaN, NaN

■ 71.2563, 0.1073,
7.0857

■ 71.2563, 0.1073,
7.0857

■ 66.1875, 4.9956,
10.2511

■ 76.5357, -4.5044,
3.7949

■ 61.3534, 10.1911,
13.2531

■ 81.9970, -8.8627,
0.4004

■ 56.7903, 15.7062,
16.0457

■ 87.6219, -12.9987,
-3.0785

■ 52.5391, 21.5333,
18.5654

■ 93.1475, -18.3220,
-3.1432

■ 48.6476, 27.6274,

■ 95.4041, -21.7130,

20.7309

-0.3876

■ 45.1691, 33.8842,
22.4439

■ 42.1598, 40.1185,
23.6004

■ 39.6716, 46.0526,
24.1172

■ 37.7372, 51.3093,
24.0615

Harmonies

Analogous

The Analogous color harmony consists of three colors that are next to each other on the color wheel.



71.2579, 1.3439, 4.8763



71.2563, 0.1073, 7.0857



71.2579, -2.1743, 8.4076

Triad

The Triadic color harmony groups three colors that are evenly spaced from another and form a triangle on the color wheel.



71.2579, 0.1054, 7.0868



71.2579, -8.6655, 5.4068



71.2579, -2.7466, -1.1233

Complementary

The Complementary color scheme is a pair of colors which are on the opposite of each other on the color wheel.



71.2563, 0.1073, 7.0857



73.2081, -7.5263, 0.7233

Split Complementary

Split-complementary colors differ from the complementary color scheme. The scheme consists of three colors, the original color and two neighbors of the complement color.



71.2579, -5.4231, -0.9683



71.2563, 0.1073, 7.0857



71.2579, -8.8136, 2.8666

Square

The Square scheme is like the rectangle color scheme, but the four colors are evenly spaced on the color wheel.



71.2579, 0.1054, 7.0868



71.2579, -7.2272, 7.4627



71.2579, -7.6347, 0.5142



71.2579, -0.3190, 0.0984

Rectangle

The Rectangle color scheme consists of four colors that form a rectangle on the color wheel.



71.2563, 0.1073, 7.0857



71.2579, -3.9643, 8.6366



71.2579, -7.6347, 0.5142



71.2579, -3.6475, -1.2316

Sweetspot

The Sweet Spot groups the original color and five complimentary colors.



71.2579, 0.1054, 7.0868



97.8674, -3.5165, 6.7626



70.5168, 4.4859, -0.4302



45.0161, -1.3994, 3.2920

0.0000, NaN, NaN



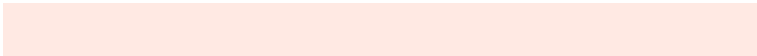
46.2646, -2.4686, 2.5136

Same Dimension

The Same Dimension uses a secret algorithm to generate beautiful new colors.



71.2579, 0.1054, 7.0868



92.2974, 1.4947, 10.2389



73.9208, -4.3831, 9.9757



33.1861, 0.1333, 3.3667



30.1456, 40.7135, 19.2883



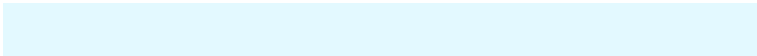
7.3625, 6.5915, 4.6521

Inverse Universe

The Inverse Universe completely reimagines the original color for something new.



73.2081, -7.5263, 0.7233



95.4707, -10.9277, -0.1168



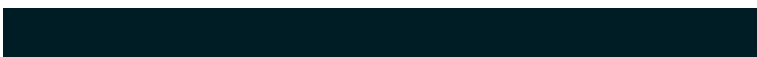
70.4976, -3.0779, -2.5705



34.1348, -3.5794, 0.2711



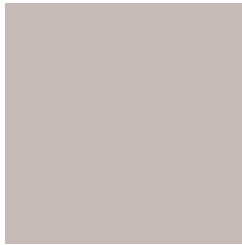
42.1957, -13.7494, -23.0599



9.7196, -3.7231, -4.1115

Previews

White Background



This preview shows how the HunterLab color 71.2563, 0.1073, 7.0857 looks on a white background.

Color Contrast Check

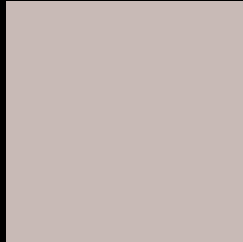
Large Text (above 18pt) WCAG AA × Fail

Any Text WCAG AA × Fail

Large Text (above 18pt) WCAG AAA × Fail

Any Text WCAG AAA × Fail

Black Background



This preview shows how the HunterLab color 71.2563, 0.1073, 7.0857 looks on a black background.

Color Contrast Check

Large Text (above 18pt) WCAG AA ✓ Pass

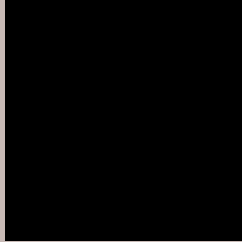
Any Text WCAG AA ✓ Pass

Large Text (above 18pt) WCAG AAA ✓ Pass

Any Text WCAG AAA ✓ Pass

If you want to check with other color combinations, try the [Color Contrast Checker](#).

HunterLab 71.2563, 0.1073, 7.0857 Background



This preview shows how black text looks on a background with the HunterLab color 71.2563, 0.1073, 7.0857.



This preview shows how white text looks on a background with the HunterLab color 71.2563, 0.1073,

Color Blindness Simulation

Color vision deficiency is a very complex topic, and I could not describe the different causes any better than Wikipedia does, so if you want to learn more, you should check out their [article about color blindness](#).

Dichromacy



Original Color

71.2563, 0.1073, 7.0857

Protanopia

71.3125, -2.7006, 6.6481

Deuteranopia

71.3030, 4.8339, 6.7692



Tritanopia

71.3546, 4.4384, -0.3468

Trichromacy



Original Color

71.2563, 0.1073, 7.0857

Protanomaly

71.2006, -1.5512, 6.5408

Deuteranomaly

71.2893, 3.2955, 6.7267

Tritanomaly

71.3591, 2.5716, 2.5815

Monochromacy



Original Color

71.2563, 0.1073, 7.0857

Achromatopsia

71.7578, -3.8288, 3.8987

Achromatomaly

71.7303, -2.5585, 5.2951

CSS Examples

Text

The CSS property to change the color of the text to HunterLab 71.2563, 0.1073, 7.0857 is called "color". The color property can be set on classes, ids or directly on the HTML element.

This example shows how text in the color `rgb(200, 186, 182)` looks like.

```
.text, #text, p{  
    color:rgb(200, 186, 182)  
}
```

If you want to add a text shadow in that color use the text-shadow property, you can generate a text shadow directly with our [CSS Text Shadow Generator](#).

Here you see how black text with a 4 pixel rgb(200, 186, 182) colored shadow looks like.

```
.shadow{ text-shadow: 4px 4px 2px rgb(200, 186, 182) }
```

Border

The CSS property to change the border of an element to HunterLab 71.2563, 0.1073, 7.0857 is called "border". The border property can be set on classes, ids or directly on the HTML element.

This example shows the color as border, it can be applied via the CSS property "border" or "border-color".

```
.border, #border, table{ border:4px solid rgb(200, 186, 182) }
```


If only the border color should be changed use the property `border-color`.

```
.border{ border-color:rgb(200, 186, 182) }
```

If you want to add a box shadow in that color use:

Here you see how a box with a 4 pixel `rgb(200, 186, 182)` colored shadow looks like.

```
.boxshadow{ -moz-box-shadow:4px 4px 4px  
4px rgb(200, 186, 182); -webkit-box-  
shadow:4px 4px 4px 4px rgb(200, 186, 182);  
box-shadow:4px 4px 4px 4px rgb(200, 186,  
182) }
```

Background

The CSS property to change the background color of an element to HunterLab 71.2563, 0.1073, 7.0857 is called "background". The background property can be set on classes, ids or directly on the HTML element.

```
.background, #background, body{  
background: rgb(200, 186, 182) }
```

If only the background color should be changed can be used:

```
.background{ background-color: rgb(200,  
186, 182) }
```

This example shows the color as background, it is applied via the CSS property "background".

To optimize and compress your CSS code, you can use our [online CSS compressor and optimizer](#) based on csstidy. If you want to create a linear or radial gradient as background or border, check our [CSS Gradient Generator](#).

Hey! You found this booklet interesting? Support Converting Colors with the new Membership Option!

The pro membership hides all ads, plus gives you double the colors in the color bucket, and more awesome pro features!

[Learn more, Memberships starting at \\$2.50/m!](#)

**Follow me
on Twitter!**

@ConvertingColor