

Converting Colors

HunterLab(71.2954, 6.2320,
7.2373)

Have a look what the booklet for
HunterLab(71.2954, 6.2320, 7.2373)
contains.

HunterLab(71.2954, 6.2320, 7.2373)	3
<i>Conversions</i>	4
<i>Details</i>	6
<i>Harmonies</i>	12
<i>Previews</i>	24
<i>Color Blindness Simulation</i>	28
<i>CSS Examples</i>	31

Color

**HunterLab(71.2954, 6.2320,
7.2373)**

Conversions

Conversions Part 1

Format	Color
Hex	D4B6B6
RGB	212, 182, 182
RGB Percent	83%, 71%, 71%
CMY	0.1686, 0.2863, 0.2863
CMYK	0.00, 0.14, 0.14, 0.17
HSL	0°, 26%, 77%
HSV	0°, 14%, 83%
XYZ	52.3228, 50.8303, 51.3095
YIQ	190.9700, 17.8800, 6.3600

Conversions

Conversions Part 2

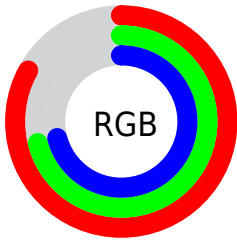
Format	Color
R _Y B	212, 182, 182
Decimal	13940406
CIE Lab	76.58, 10.75, 3.98
CIE LCh	77, 11.459, 20.321
Yxy	50.8326, 0.3387, 0.3291
Android (android.graphics.Color)	4292130486 (0xFFD4B6B6)
YUV	190.9700, -4.4222, 18.4433
Hunter-Lab	71.2954, 6.2320, 7.2373

Details

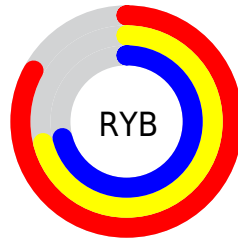
The HunterLab color $71.2954, 6.2320, 7.2373$ is a light color, and the websafe version is hex $CC9999$. A complement of this color would be $78.6029, -13.2951, 1.2184$, and the grayscale version is $72.1815, -3.8514, 3.9218$.

A 20% lighter version of the original color is $94.1181, 0.7623, 7.0522$, and $49.4506, 6.2925, 5.6800$ is the 20% darker color. If you saturate the color by 10%, you get $64.7966, 14.0925, 9.4054$, and if you desaturate by 10%, it is $78.1832, -1.2984, 5.2114$.

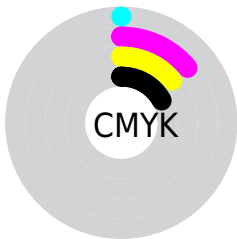
Distribution



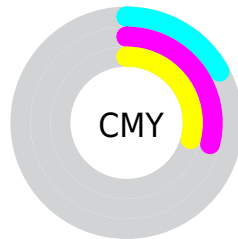
- Red (83%)
- Green (71%)
- Blue (71%)



- Red (83%)
- Yellow (71%)
- Blue (71%)



- Cyan (0%)
- Magenta (14%)
- Yellow (14%)
- Black (17%)




- Cyan (17%)
- Magenta (29%)
- Yellow (29%)

Brightness & Saturation Gradients


These gradients show how the HunterLab color 71.2954, 6.2320, 7.2373 changes by changing the brightness by 10 percent. The first figure shows a shift by +10% for each color and the second figure -10%.

Similar to the brightness gradients but the following saturation gradients show a change of the HunterLab color 71.2954, 6.2320, 7.2373 by changing the saturation by 10% instead.


 71.2954, 6.2320,
7.2373

 71.2954, 6.2320,
7.2373


197.4622, 3.3652,
15.5223

 60.0628, 6.3029,
6.4308


 95.6072, 5.9103,
8.9233

 49.4898, 6.3099,
5.6462

108.6248, 5.6733,
9.8001

 39.6224, 6.2425,
4.8841


122.1850, 5.3897,
10.6994

 30.5150, 6.0894,
4.1432

136.2666, 5.0626,
11.6210

 22.2374, 5.8352,
3.4209

150.8512, 4.6946,
12.5644

 14.8830, 5.4570,
2.7111

165.9219, 4.2877,

 8.5333, 5.1382,

13.5294

2.3977

181.4635, 3.8440,
14.5154

0.0000, NaN, NaN

0.0000, NaN, NaN

■ 71.2954, 6.2320,
7.2373

■ 71.2954, 6.2320,
7.2373

■ 64.7966, 14.0925,
9.4054

■ 78.1832, -1.2984,
5.2114

■ 58.7549, 22.2768,
11.7129

■ 85.3975, -8.5143,
3.3125

■ 53.2627, 30.6975,
14.1392

■ 92.8941, -15.4546,
1.5263

■ 48.4286, 39.1431,
16.6209

■ 96.3001, -18.4564,
0.7686

■ 44.3739, 47.2158,

19.0335

■ 41.2147, 54.3135,
21.1835

■ 39.0295, 59.7367,
22.8422

■ 37.8128, 62.9702,
23.8367

■ 37.4136, 64.0678,
24.1757

Harmonies

Analogous

The Analogous color harmony consists of three colors that are next to each other on the color wheel.



71.2970, 6.7581, 2.1941



71.2954, 6.2320, 7.2373



71.2970, 2.9683, 11.0966

Triad

The Triadic color harmony groups three colors that are evenly spaced from another and form a triangle on the color wheel.



71.2970, 6.2298, 7.2385



71.2970, -11.6525, 9.9245



71.2970, -5.5516, -6.5991

Complementary

The Complementary color scheme is a pair of colors which are on the opposite of each other on the color wheel.



71.2954, 6.2320, 7.2373



78.6029, -13.2951, 1.2184

Split Complementary

Split-complementary colors differ from the complementary color scheme. The scheme consists of three colors, the original color and two neighbors of the complement color.



71.2970, -10.3404, -4.1780



71.2954, 6.2320, 7.2373



71.2970, -13.7926, 5.5275

Square

The Square scheme is like the rectangle color scheme, but the four colors are evenly spaced on the color wheel.



71.2970, 6.2298, 7.2385



71.2970, -7.3911, 12.5652



71.2970, -13.3196, 0.3516



71.2970, -0.1528, -6.0552

Rectangle

The Rectangle color scheme consists of four colors that form a rectangle on the color wheel.



71.2954, 6.2320, 7.2373



71.2970, -0.2648, 12.5983



71.2970, -13.3196, 0.3516



71.2970, -7.2834, -6.0985

Sweetspot

The Sweet Spot groups the original color and five complimentary colors.



71.2970, 6.2298, 7.2385



96.4495, -1.6985, 6.3965



72.2545, 11.3150, -6.3907



44.3164, -0.4661, 3.0444

0.0000, NaN, NaN



46.2646, -2.4686, 2.5136

Same Dimension

The Same Dimension uses a secret algorithm to generate beautiful new colors.



71.2970, 6.2298, 7.2385



85.3878, 10.5691, 9.7112



75.7018, -1.4671, 11.9594



35.2435, 1.2455, 2.9631



29.3966, 50.3383, 18.9953



7.2202, 12.3604, 4.6654

Inverse Universe

The Inverse Universe completely reimagines the original color for something new.



78.6029, -13.2951, 1.2184



96.2712, -18.5514, 0.7316



73.9133, -5.8408, -4.5219



37.5601, -4.9372, 1.0570



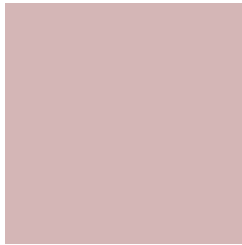
56.5644, -29.9829, -5.9762



13.8921, -7.3639, -1.4673

Previews

White Background



This preview shows how the HunterLab color 71.2954, 6.2320, 7.2373 looks on a white background.

Color Contrast Check

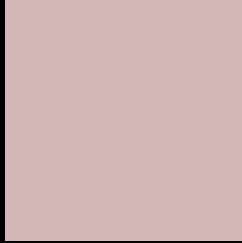
Large Text (above 18pt) WCAG AA × Fail

Any Text WCAG AA × Fail

Large Text (above 18pt) WCAG AAA × Fail

Any Text WCAG AAA × Fail

Black Background



This preview shows how the HunterLab color 71.2954, 6.2320, 7.2373 looks on a black background.

Color Contrast Check

Large Text (above 18pt) WCAG AA ✓ Pass

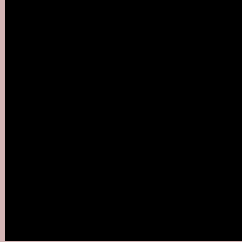
Any Text WCAG AA ✓ Pass

Large Text (above 18pt) WCAG AAA ✓ Pass

Any Text WCAG AAA ✓ Pass

If you want to check with other color combinations, try the [Color Contrast Checker](#).

HunterLab 71.2954, 6.2320, 7.2373 Background



This preview shows how black text looks on a background with the HunterLab color 71.2954, 6.2320, 7.2373.



This preview shows how white text looks on a background with the HunterLab color 71.2954, 6.2320,

Color Blindness Simulation

Color vision deficiency is a very complex topic, and I could not describe the different causes any better than Wikipedia does, so if you want to learn more, you should check out their [article about color blindness](#).

Dichromacy



Original Color

71.2954, 6.2320, 7.2373

Protanopia

71.2788, -2.6995, 5.6955

Deuteranopia

71.3765, 5.0223, 7.3078



Tritanopia

71.2978, 9.8978, 1.6635

Trichromacy



Original Color

71.2954, 6.2320, 7.2373

Protanomaly

71.3147, 0.4240, 6.2500

Deuteranomaly

71.4795, 5.3678, 7.4304

Tritanomaly

71.3524, 8.3691, 3.6338

Monochromacy



Original Color

71.2954, 6.2320, 7.2373

Achromatopsia

72.1800, -3.8513, 3.9217

Achromatomaly

71.9301, -0.2764, 5.1018

CSS Examples

Text

The CSS property to change the color of the text to HunterLab 71.2954, 6.2320, 7.2373 is called "color". The color property can be set on classes, ids or directly on the HTML element.

This example shows how text in the color `rgb(212, 182, 182)` looks like.

```
.text, #text, p{  
    color:rgb(212, 182, 182)  
}
```

If you want to add a text shadow in that color use the text-shadow property, you can generate a text shadow directly with our [CSS Text Shadow Generator](#).

Here you see how black text with a 4 pixel rgb(212, 182, 182) colored shadow looks like.

```
.shadow{ text-shadow: 4px 4px 2px rgb(212, 182, 182) }
```

Border

The CSS property to change the border of an element to HunterLab 71.2954, 6.2320, 7.2373 is called "border".

The border property can be set on classes, ids or directly on the HTML element.

This example shows the color as border, it can be applied via the CSS property "border" or "border-color".

```
.border, #border, table{ border:4px solid rgb(212, 182, 182) }
```


If only the border color should be changed use the property `border-color`.

```
.border{ border-color:rgb(212, 182, 182) }
```

If you want to add a box shadow in that color use:

Here you see how a box with a 4 pixel `rgb(212, 182, 182)` colored shadow looks like.

```
.boxshadow{ -moz-box-shadow:4px 4px 4px  
4px rgb(212, 182, 182); -webkit-box-  
shadow:4px 4px 4px 4px rgb(212, 182, 182);  
box-shadow:4px 4px 4px 4px rgb(212, 182,  
182) }
```

Background

The CSS property to change the background color of an element to HunterLab 71.2954, 6.2320, 7.2373 is called "background". The background property can be set on classes, ids or directly on the HTML element.

```
.background, #background, body{  
background: rgb(212, 182, 182) }
```

If only the background color should be changed can be used:

```
.background{ background-color: rgb(212,  
182, 182) }
```

This example shows the color as background, it is applied via the CSS property "background".

To optimize and compress your CSS code, you can use our [online CSS compressor and optimizer](#) based on csstidy. If you want to create a linear or radial gradient as background or border, check our [CSS Gradient Generator](#).

Hey! You found this booklet interesting? Support Converting Colors with the new Membership Option!

The pro membership hides all ads, plus gives you double the colors in the color bucket, and more awesome pro features!

[Learn more, Memberships starting at \\$2.50/m!](#)

**Follow me
on Twitter!**

@ConvertingColor