

Converting Colors

HunterLab(71.2976, 3.2053,
19.3846)

Have a look what the booklet for
HunterLab(71.2976, 3.2053,
19.3846) contains.

HunterLab(71.3342, 3.3239, 19.3238)	3
<i>Conversions</i>	4
<i>Details</i>	6
<i>Harmonies</i>	12
<i>Previews</i>	24
<i>Color Blindness Simulation</i>	28
<i>CSS Examples</i>	31

Color

**HunterLab(71.3342, 3.3239,
19.3238)**

Conversions

Conversions Part 1

Format	Color
Hex	D9B798
RGB	217, 183, 152
RGB Percent	85%, 72%, 60%
CMY	0.1490, 0.2823, 0.4039
CMYK	0.00, 0.16, 0.30, 0.15
HSL	29°, 46%, 72%
HSV	29°, 30%, 85%
XYZ	51.2163, 50.8857, 36.8283
YIQ	189.6320, 30.2150, -2.4330

Conversions

Conversions Part 2

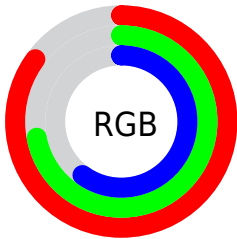
Format	Color
RYB	217, 211, 152
Decimal	14268312
CIELab	76.61, 7.69, 20.32
CIELCh	77, 21.731, 69.271
Yxy	50.8880, 0.3686, 0.3663
Android (android.graphics.Color)	4292458392 (0xFFD9B798)
YUV	189.6320, -18.5526, 24.0017
Hunter-Lab	71.3342, 3.3239, 19.3238

Details

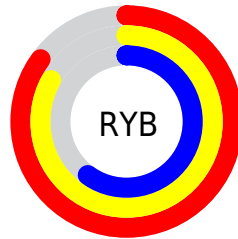
The HunterLab color $71.3342, 3.3239, 19.3238$ is a light color, and the websafe version is hex `FFCC99`. A complement of this color would be $68.4117, -7.4419, -14.8682$, and the grayscale version is $71.6706, -3.8242, 3.8940$.

A 20% lighter version of the original color is $93.5143, -4.7481, 20.5179$, and $49.4792, 3.7074, 15.8006$ is the 20% darker color. If you saturate the color by 10%, you get $67.6357, 6.6061, 23.1861$, and if you desaturate by 10%, it is $75.1916, 0.3986, 14.8841$.

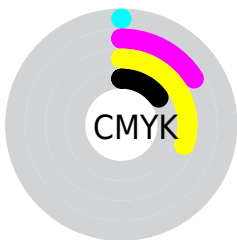
Distribution



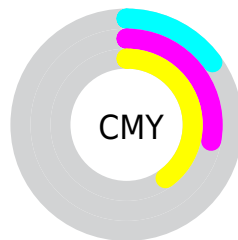
- Red (85%)
- Green (72%)
- Blue (60%)



- Red (85%)
- Yellow (83%)
- Blue (60%)



- Cyan (0%)
- Magenta (16%)
- Yellow (30%)
- Black (15%)



- Cyan (15%)
- Magenta (28%)
- Yellow (40%)

Brightness & Saturation Gradients

These gradients show how the HunterLab color 71.3342, 3.3239, 19.3238 changes by changing the brightness by 10 percent. The first figure shows a shift by +10% for each color and the second figure -10%.

Similar to the brightness gradients but the following saturation gradients show a change of the HunterLab color 71.3342, 3.3239, 19.3238 by changing the saturation by 10% instead.

71.3342, 3.3239,
19.3238

71.3342, 3.3239,
19.3238

197.5167, -0.6296,
33.8849

60.0995, 3.5411,
17.6228

95.6500, 2.7285,
22.6387

49.5242, 3.7029,
15.8757

108.6696, 2.3631,
24.2661

39.6543, 3.7997,
14.0661

122.2315, 1.9560,
25.8811

30.5443, 3.8223,
12.1689

136.3148, 1.5097,
27.4877

22.2637, 3.7577,
10.1446

150.9011, 1.0261,
29.0891

14.9060, 3.5865,
8.1217

165.9734, 0.5074,

8.5551, 3.4750,

30.6878

5.9886

181.5165, -0.0451,
32.2858

0.0000, NaN, NaN

0.0000, NaN, NaN

■ 71.3342, 3.3239,
19.3238

■ 71.3342, 3.3239,
19.3238

■ 67.6357, 6.6061,
23.1861

■ 75.1916, 0.3986,
14.8841

■ 64.1058, 10.2709,
26.4041

■ 79.1898, -2.1851,
9.9241

■ 60.7616, 14.3258,
28.9140

■ 83.3186, -4.4545,
4.4994

■ 57.6199, 18.7676,
30.6562

■ 87.5674, -6.4348,
-1.3412

■ 54.6973, 23.5728,

■ 91.7311, -9.2305,

31.5869

-4.7867

■ 52.0095, 28.6896,
31.6963

■ 95.4093, -15.0612,
-0.2648

■ 49.5625, 33.9961,
31.1318

■ 96.6911, -17.0453,
1.2697

■ 49.5515, 34.0207,
31.1290

Harmonies

Analogous

The Analogous color harmony consists of three colors that are next to each other on the color wheel.



71.3358, 12.1453, 14.7888



71.3342, 3.3239, 19.3238



71.3358, -6.9667, 20.0588

Triad

The Triadic color harmony groups three colors that are evenly spaced from another and form a triangle on the color wheel.



71.3358, 3.3214, 19.3248



71.3358, -22.2880, 0.7869



71.3358, 9.1373, -12.2604

Complementary

The Complementary color scheme is a pair of colors which are on the opposite of each other on the color wheel.



71.3342, 3.3239, 19.3238



68.4117, -7.4419, -14.8682

Split Complementary

Split-complementary colors differ from the complementary color scheme. The scheme consists of three colors, the original color and two neighbors of the complement color.



71.3358, -0.5977, -17.2777



71.3342, 3.3239, 19.3238



71.3358, -18.4758, -9.0734

Square

The Square scheme is like the rectangle color scheme, but the four colors are evenly spaced on the color wheel.



71.3358, 3.3214, 19.3248



71.3358, -21.3708, 10.2225



71.3358, -10.6720, -16.0354



71.3358, 15.6329, -3.0977

Rectangle

The Rectangle color scheme consists of four colors that form a rectangle on the color wheel.



71.3342, 3.3239, 19.3238



71.3358, -13.2194, 18.4144



71.3358, -10.6720, -16.0354



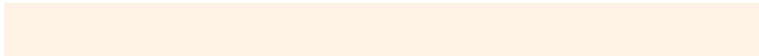
71.3358, 6.1136, -14.5427

Sweetspot

The Sweet Spot groups the original color and five complimentary colors.



71.3358, 3.3214, 19.3248



95.4926, -2.8751, 11.3678



63.8611, 24.5837, -3.6942



43.8476, -1.1330, 5.6839

0.0000, NaN, NaN



46.2646, -2.4686, 2.5136

Same Dimension

The Same Dimension uses a secret algorithm to generate beautiful new colors.



71.3358, 3.3214, 19.3248



82.7837, 6.4495, 26.2398



80.9537, -12.5880, 27.9061



37.5113, -1.0910, 4.5619



38.8230, 25.8242, 24.3746



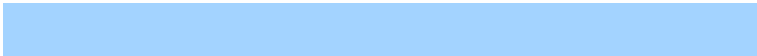
10.7159, 4.6861, 6.6851

Inverse Universe

The Inverse Universe completely reimagines the original color for something new.



68.4117, -7.4419, -14.8682



78.5631, -9.0182, -23.1462



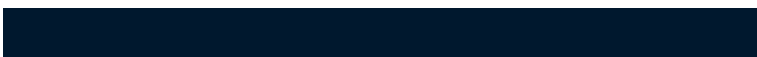
59.0356, 8.7330, -29.3983



37.0654, -2.7437, -0.6461



32.3447, 5.7367, -52.8120



9.2195, -0.2979, -10.8804

Previews

White Background



This preview shows how the HunterLab color 71.3342, 3.3239, 19.3238 looks on a white background.

Color Contrast Check

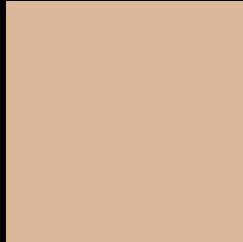
Large Text (above 18pt) WCAG AA × Fail

Any Text WCAG AA × Fail

Large Text (above 18pt) WCAG AAA × Fail

Any Text WCAG AAA × Fail

Black Background



This preview shows how the HunterLab color 71.3342, 3.3239, 19.3238 looks on a black background.

Color Contrast Check

Large Text (above 18pt) WCAG AA ✓ Pass

Any Text WCAG AA ✓ Pass

Large Text (above 18pt) WCAG AAA ✓ Pass

Any Text WCAG AAA ✓ Pass

If you want to check with other color combinations, try the [Color Contrast Checker](#).

HunterLab 71.3342, 3.3239, 19.3238 Background



This preview shows how black text looks on a background with the HunterLab color 71.3342, 3.3239, 19.3238.



This preview shows how white text looks on a background with the HunterLab color 71.3342, 3.3239, 19.3238.

Color Blindness Simulation

Color vision deficiency is a very complex topic, and I could not describe the different causes any better than Wikipedia does, so if you want to learn more, you should check out their [article about color blindness](#).

Dichromacy



Original Color

71.3342, 3.3239, 19.3238

Protanopia

71.4431, -5.2641, 18.1955

Deuteranopia

71.3712, 4.9292, 19.3875



Tritanopia

71.3964, 12.9210, 3.2881

Trichromacy



Original Color

71.3342, 3.3239, 19.3238

Protanomaly

71.4112, -2.3471, 18.5795

Deuteranomaly

71.2622, 4.5629, 19.2762

Tritanomaly

71.4370, 9.3462, 9.6605

Monochromacy



Original Color

71.3342, 3.3239, 19.3238

Achromatopsia

71.7578, -3.8288, 3.8987

Achromatomaly

71.3825, -1.3235, 9.8462

CSS Examples

Text

The CSS property to change the color of the text to HunterLab 71.3342, 3.3239, 19.3238 is called "color". The color property can be set on classes, ids or directly on the HTML element.

This example shows how text in the color `rgb(217, 183, 152)` looks like.

```
.text, #text, p{  
    color:rgb(217, 183, 152)  
}
```

If you want to add a text shadow in that color use the text-shadow property, you can generate a text shadow directly with our [CSS Text Shadow Generator](#).

Here you see how black text with a 4 pixel rgb(217, 183, 152) colored shadow looks like.

```
.shadow{ text-shadow: 4px 4px 2px rgb(217, 183, 152) }
```

Border

The CSS property to change the border of an element to HunterLab 71.3342, 3.3239, 19.3238 is called "border". The border property can be set on classes, ids or directly on the HTML element.

This example shows the color as border, it can be applied via the CSS property "border" or "border-color".

```
.border, #border, table{ border:4px solid rgb(217, 183, 152) }
```


If only the border color should be changed use the property `border-color`.

```
.border{ border-color:rgb(217, 183, 152) }
```

If you want to add a box shadow in that color use:

Here you see how a box with a 4 pixel `rgb(217, 183, 152)` colored shadow looks like.

```
.boxshadow{ -moz-box-shadow:4px 4px 4px  
4px rgb(217, 183, 152); -webkit-box-  
shadow:4px 4px 4px 4px rgb(217, 183, 152);  
box-shadow:4px 4px 4px 4px rgb(217, 183,  
152) }
```

Background

The CSS property to change the background color of an element to HunterLab 71.3342, 3.3239, 19.3238 is called "background". The background property can be set on classes, ids or directly on the HTML element.

```
.background, #background, body{  
background: rgb(217, 183, 152) }
```

If only the background color should be changed can be used:

```
.background{ background-color: rgb(217,  
183, 152) }
```

This example shows the color as background, it is applied via the CSS property "background".

To optimize and compress your CSS code, you can use our [online CSS compressor and optimizer](#) based on csstidy. If you want to create a linear or radial gradient as background or border, check our [CSS Gradient Generator](#).

Hey! You found this booklet interesting? Support Converting Colors with the new Membership Option!

The pro membership hides all ads, plus gives you double the colors in the color bucket, and more awesome pro features!

[Learn more, Memberships starting at \\$2.50/m!](#)

**Follow me
on Twitter!**

@ConvertingColor