

Converting Colors

HunterLab(71.3191, 6.3370,
5.0237)

Have a look what the booklet for
HunterLab(71.3191, 6.3370, 5.0237)
contains.

HunterLab(71.2358, 6.3284, 4.8762)	3
<i>Conversions</i>	4
<i>Details</i>	6
<i>Harmonies</i>	12
<i>Previews</i>	24
<i>Color Blindness Simulation</i>	28
<i>CSS Examples</i>	31

Color

**HunterLab(71.2358, 6.3284,
4.8762)**

Conversions

Conversions Part 1

Format	Color
Hex	D2B6BB
RGB	210, 182, 187
RGB Percent	82%, 71%, 73%
CMY	0.1765, 0.2863, 0.2667
CMYK	0.00, 0.13, 0.11, 0.18
HSL	349°, 24%, 77%
HSV	349°, 13%, 82%
XYZ	52.2759, 50.7454, 54.0533
YIQ	190.9420, 15.0830, 7.4910

Conversions

Conversions Part 2

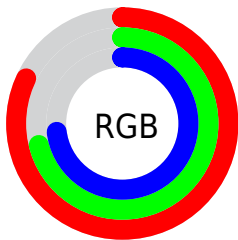
Format	Color
R _Y B	210, 182, 187
Decimal	13809339
CIE Lab	76.53, 10.85, 1.16
CIE LCh	77, 10.908, 6.128
Yxy	50.7476, 0.3328, 0.3231
Android (android.graphics.Color)	4291999419 (0xFFD2B6BB)
YUV	190.9420, -1.9434, 16.7139
Hunter-Lab	71.2358, 6.3284, 4.8762

Details

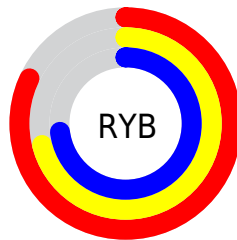
The HunterLab color $71.2358, 6.3284, 4.8762$ is a light color, and the websafe version is hex `CCCCCC`. A complement of this color would be $77.7479, -13.5518, 3.6228$, and the grayscale version is $72.1603, -3.8503, 3.9206$.

A 20% lighter version of the original color is $94.2763, 1.6185, 4.7943$, and $49.3865, 6.3570, 3.4660$ is the 20% darker color. If you saturate the color by 10%, you get $64.8737, 14.5705, 5.5868$, and if you desaturate by 10%, it is $77.9666, -1.6729, 4.4497$.

Distribution



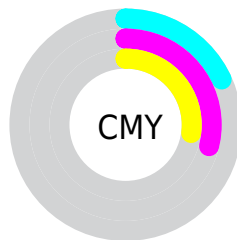
- Red (82%)
- Green (71%)
- Blue (73%)



- Red (82%)
- Yellow (71%)
- Blue (73%)



- Cyan (0%)
- Magenta (13%)
- Yellow (11%)
- Black (18%)




- Cyan (18%)
- Magenta (29%)
- Yellow (27%)

Brightness & Saturation Gradients

These gradients show how the HunterLab color 71.2358, 6.3284, 4.8762 changes by changing the brightness by 10 percent. The first figure shows a shift by +10% for each color and the second figure -10%.


Similar to the brightness gradients but the following saturation gradients show a change of the HunterLab color 71.2358, 6.3284, 4.8762 by changing the saturation by 10% instead.


 71.2358, 6.3284,
4.8762

 71.2358, 6.3284,
4.8762


197.3785, 3.4991,
12.1531

 60.0065, 6.3943,
4.2097


 95.5414, 6.0162,
6.3045

 49.4371, 6.3960,
3.5743


108.5562, 5.7836,
7.0616

 39.5734, 6.3228,
2.9731


122.1136, 5.5043,
7.8461

 30.4701, 6.1636,
2.4077

136.1927, 5.1813,
8.6574

 22.1969, 5.9027,
1.8802

150.7747, 4.8172,
9.4944

 14.8476, 5.5173,
1.3930

165.8429, 4.4142,

 8.4997, 5.2077,

10.3565

1.0306

181.3821, 3.9743,
11.2429

0.0000, NaN, NaN

0.0000, NaN, NaN

■ 71.2358, 6.3284,
4.8762

■ 71.2358, 6.3284,
4.8762

■ 64.8737, 14.5705,
5.5868

■ 77.9666, -1.6729,
4.4497

■ 58.9429, 23.0282,
6.6280

■ 85.0079, -9.4325,
4.2582

■ 53.5282, 31.5978,
8.0482

■ 92.3188, -16.9753,
4.2638

■ 48.7297, 40.0593,
9.8776

■ 96.1466, -19.0121,
0.5713

■ 44.6594, 48.0246,

12.1032

■ 41.4278, 54.9233,
14.6356

■ 39.1155, 60.0994,
17.2873

■ 37.7327, 63.0656,
19.7921

■ 37.1999, 64.0732,
21.1916

Harmonies

Analogous

The Analogous color harmony consists of three colors that are next to each other on the color wheel.



71.2374, 5.4927, -0.0469



71.2358, 6.3284, 4.8762



71.2374, 4.3836, 9.2186

Triad

The Triadic color harmony groups three colors that are evenly spaced from another and form a triangle on the color wheel.



71.2374, 6.3263, 4.8774



71.2374, -9.5582, 11.0844



71.2374, -7.7740, -5.3000

Complementary

The Complementary color scheme is a pair of colors which are on the opposite of each other on the color wheel.



71.2358, 6.3284, 4.8762



77.7479, -13.5518, 3.6228

Split Complementary

Split-complementary colors differ from the complementary color scheme. The scheme consists of three colors, the original color and two neighbors of the complement color.



71.2374, -11.6394, -1.9118



71.2358, 6.3284, 4.8762



71.2374, -12.6488, 7.5908

Square

The Square scheme is like the rectangle color scheme, but the four colors are evenly spaced on the color wheel.



71.2374, 6.3263, 4.8774



71.2374, -4.8605, 12.6344



71.2374, -13.3997, 2.8632



71.2374, -2.7431, -6.1546

Rectangle

The Rectangle color scheme consists of four colors that form a rectangle on the color wheel.



71.2358, 6.3284, 4.8762



71.2374, 1.8071, 11.2743



71.2374, -13.3997, 2.8632



71.2374, -9.2483, -4.4084

Sweetspot

The Sweet Spot groups the original color and five complimentary colors.



71.2374, 6.3263, 4.8774



96.5069, -1.3831, 5.5704



71.4644, 8.5730, -6.4001



44.3479, -0.2934, 2.5915

0.0000, NaN, NaN



46.2646, -2.4686, 2.5136

Same Dimension

The Same Dimension uses a secret algorithm to generate beautiful new colors.



71.2374, 6.3263, 4.8774



86.4295, 10.7739, 6.2887



73.6780, 0.9814, 9.8015



34.4125, 1.4713, 2.1805



29.0718, 50.1094, 16.2814



6.9518, 12.1346, 2.7128

Inverse Universe

The Inverse Universe completely reimagines the original color for something new.



71.2374, 6.3263, 4.8774



86.4295, 10.7739, 6.2887



75.1235, -8.2807, -1.9764



34.4125, 1.4713, 2.1805



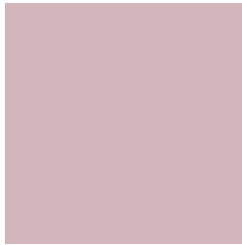
29.0718, 50.1094, 16.2814



6.9518, 12.1346, 2.7128

Previews

White Background



This preview shows how the HunterLab color 71.2358, 6.3284, 4.8762 looks on a white background.

Color Contrast Check

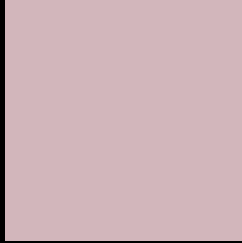
Large Text (above 18pt) WCAG AA × Fail

Any Text WCAG AA × Fail

Large Text (above 18pt) WCAG AAA × Fail

Any Text WCAG AAA × Fail

Black Background



This preview shows how the HunterLab color 71.2358, 6.3284, 4.8762 looks on a black background.

Color Contrast Check

Large Text (above 18pt) WCAG AA ✓ Pass

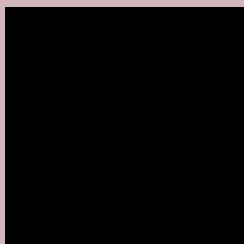
Any Text WCAG AA ✓ Pass

Large Text (above 18pt) WCAG AAA ✓ Pass

Any Text WCAG AAA ✓ Pass

If you want to check with other color combinations, try the [Color Contrast Checker](#).

HunterLab 71.2358, 6.3284, 4.8762 Background



This preview shows how black text looks on a background with the HunterLab color 71.2358, 6.3284, 4.8762.



This preview shows how white text looks on a background with the HunterLab color 71.2358, 6.3284,

4.8762.

Color Blindness Simulation

Color vision deficiency is a very complex topic, and I could not describe the different causes any better than Wikipedia does, so if you want to learn more, you should check out their [article about color blindness](#).

Dichromacy



Original Color

71.2358, 6.3284, 4.8762

Protanopia

71.3377, -2.1945, 3.4314

Deuteranopia

71.3195, 5.1262, 4.9526



Tritanopia

71.2999, 8.5074, 1.1505

Trichromacy



Original Color

71.2358, 6.3284, 4.8762

Protanomaly

71.3681, 0.9056, 3.9962

Deuteranomaly

71.4214, 5.4676, 5.0771

Tritanomaly

71.2056, 8.0069, 2.4927

Monochromacy



Original Color

71.2358, 6.3284, 4.8762

Achromatopsia

72.1800, -3.8513, 3.9217

Achromatomaly

71.8957, -0.2736, 4.1232

CSS Examples

Text

The CSS property to change the color of the text to HunterLab 71.2358, 6.3284, 4.8762 is called "color". The color property can be set on classes, ids or directly on the HTML element.

This example shows how text in the color `rgb(210, 182, 187)` looks like.

```
.text, #text, p{  
    color:rgb(210, 182, 187)  
}
```

If you want to add a text shadow in that color use the text-shadow property, you can generate a text shadow directly with our [CSS Text Shadow Generator](#).

Here you see how black text with a 4 pixel rgb(210, 182, 187) colored shadow looks like.

```
.shadow{ text-shadow: 4px 4px 2px rgb(210, 182, 187) }
```

Border

The CSS property to change the border of an element to HunterLab 71.2358, 6.3284, 4.8762 is called "border".

The border property can be set on classes, ids or directly on the HTML element.

This example shows the color as border, it can be applied via the CSS property "border" or "border-color".

```
.border, #border, table{ border:4px solid rgb(210, 182, 187) }
```


If only the border color should be changed use the property `border-color`.

```
.border{ border-color:rgb(210, 182, 187) }
```

If you want to add a box shadow in that color use:

Here you see how a box with a 4 pixel `rgb(210, 182, 187)` colored shadow looks like.

```
.boxshadow{ -moz-box-shadow:4px 4px 4px  
4px rgb(210, 182, 187); -webkit-box-  
shadow:4px 4px 4px 4px rgb(210, 182, 187);  
box-shadow:4px 4px 4px 4px rgb(210, 182,  
187) }
```

Background

The CSS property to change the background color of an element to HunterLab 71.2358, 6.3284, 4.8762 is called "background". The background property can be set on classes, ids or directly on the HTML element.

```
.background, #background, body{  
background: rgb(210, 182, 187) }
```

If only the background color should be changed can be used:

```
.background{ background-color: rgb(210,  
182, 187) }
```

This example shows the color as background, it is applied via the CSS property "background".

To optimize and compress your CSS code, you can use our [online CSS compressor and optimizer](#) based on csstidy. If you want to create a linear or radial gradient as background or border, check our [CSS Gradient Generator](#).

Hey! You found this booklet interesting? Support Converting Colors with the new Membership Option!

The pro membership hides all ads, plus gives you double the colors in the color bucket, and more awesome pro features!

[Learn more, Memberships starting at \\$2.50/m!](#)

**Follow me
on Twitter!**

@ConvertingColor