

Converting Colors

HunterLab(71.3281, 1.8578,
18.9339)

Have a look what the booklet for
HunterLab(71.3281, 1.8578,
18.9339) contains.

HunterLab(71.3281, 1.8578, 18.9339)	3
<i>Conversions</i>	4
<i>Details</i>	6
<i>Harmonies</i>	12
<i>Previews</i>	24
<i>Color Blindness Simulation</i>	28
<i>CSS Examples</i>	31

Color

**HunterLab(71.3281, 1.8578,
18.9339)**

Conversions

Conversions Part 1

Format	Color
Hex	D6B899
RGB	214, 184, 153
RGB Percent	84%, 72%, 60%
CMY	0.1608, 0.2784, 0.4000
CMYK	0.00, 0.14, 0.29, 0.16
HSL	30°, 43%, 72%
HSV	30°, 29%, 84%
XYZ	50.6218, 50.8770, 37.2891
YIQ	189.4360, 27.8310, -3.2810

Conversions

Conversions Part 2

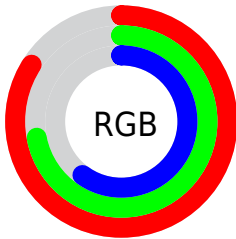
Format	Color
R _Y B	212, 214, 153
Decimal	14071961
CIE Lab	76.61, 6.13, 19.74
CIE LCh	77, 20.667, 72.735
Yxy	50.8793, 0.3647, 0.3666
Android (android.graphics.Color)	4292262041 (0xFFD6B899)
YUV	189.4360, -17.9629, 21.5426
Hunter-Lab	71.3281, 1.8578, 18.9339

Details

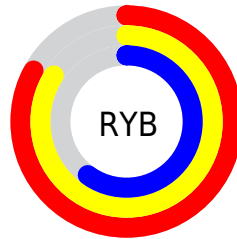
The HunterLab color $71.3281, 1.8578, 18.9339$ is a light color, and the websafe version is hex `CCCC99`. A complement of this color would be $67.4484, -6.3341, -14.4728$, and the grayscale version is $71.5862, -3.8197, 3.8894$.

A 20% lighter version of the original color is $93.8537, -5.1264, 20.4506$, and $49.4581, 2.2872, 15.4466$ is the 20% darker color. If you saturate the color by 10%, you get $67.8408, 4.6945, 22.9318$, and if you desaturate by 10%, it is $74.9580, -0.6309, 14.3410$.

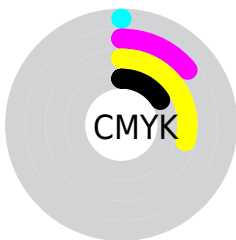
Distribution



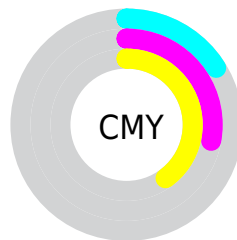
- Red (84%)
- Green (72%)
- Blue (60%)



- Red (83%)
- Yellow (84%)
- Blue (60%)



- Cyan (0%)
- Magenta (14%)
- Yellow (29%)
- Black (16%)



- Cyan (16%)
- Magenta (28%)
- Yellow (40%)

Brightness & Saturation Gradients

These gradients show how the HunterLab color 71.3281, 1.8578, 18.9339 changes by changing the brightness by 10 percent. The first figure shows a shift by +10% for each color and the second figure -10%.

Similar to the brightness gradients but the following saturation gradients show a change of the HunterLab color 71.3281, 1.8578, 18.9339 by changing the saturation by 10% instead.

71.3281, 1.8578,
18.9339

71.3281, 1.8578,
18.9339

197.5082, -2.6537,
33.2578

60.0937, 2.1508,
17.2671

95.6433, 1.1217,
22.1867

49.5188, 2.3925,
15.5569

108.6625, 0.6904,
23.7856

39.6493, 2.5745,
13.7878

122.2241, 0.2198,
25.3736

30.5396, 2.6885,
11.9351

136.3073, -0.2878,
26.9544

22.2596, 2.7231,
9.9609

150.8932, -0.8306,
28.5310

14.9024, 2.6610,
7.9576

165.9653, -1.4068,

8.5517, 2.6688,

30.1058

5.9862

181.5082, -2.0149,
31.6809

0.0000, NaN, NaN

0.0000, NaN, NaN

■ 71.3281, 1.8578,
18.9339

■ 71.3281, 1.8578,
18.9339

■ 67.8408, 4.6945,
22.9318

■ 74.9580, -0.6309,
14.3410

■ 64.5029, 7.9050,
26.2723

■ 78.7146, -2.7859,
9.2070

■ 61.3290, 11.4985,
28.8972

■ 82.5895, -4.6331,
3.5853

■ 58.3322, 15.4767,
30.7532

■ 86.5738, -6.1959,
-2.4766

■ 55.5257, 19.8254,

■ 90.4792, -8.4905,

31.8017

-6.3911

■ 52.9218, 24.5077,
32.0339

■ 93.8751, -13.9020,
-2.1507

■ 50.5267, 29.4401,
31.5419

■ 96.4553, -17.8959,
0.9676

■ 50.1841, 30.1807,
31.4516

Harmonies

Analogous

The Analogous color harmony consists of three colors that are next to each other on the color wheel.



71.3297, 10.5288, 14.9827



71.3281, 1.8578, 18.9339



71.3297, -7.9065, 19.2150

Triad

The Triadic color harmony groups three colors that are evenly spaced from another and form a triangle on the color wheel.



71.3297, 1.8553, 18.9349



71.3297, -21.2346, -0.1728



71.3297, 9.3999, -10.5397

Complementary

The Complementary color scheme is a pair of colors which are on the opposite of each other on the color wheel.



71.3281, 1.8578, 18.9339



67.4484, -6.3341, -14.4728

Split Complementary

Split-complementary colors differ from the complementary color scheme. The scheme consists of three colors, the original color and two neighbors of the complement color.



71.3297, 0.3815, -15.8540



71.3281, 1.8578, 18.9339



71.3297, -17.0983, -9.3491

Square

The Square scheme is like the rectangle color scheme, but the four colors are evenly spaced on the color wheel.



71.3297, 1.8553, 18.9349



71.3297, -20.8876, 8.9885



71.3297, -9.3035, -15.3911



71.3297, 15.0431, -1.6310

Rectangle

The Rectangle color scheme consists of four colors that form a rectangle on the color wheel.



71.3281, 1.8578, 18.9339



71.3297, -13.6928, 17.3460



71.3297, -9.3035, -15.3911



71.3297, 6.6424, -12.8563

Sweetspot

The Sweet Spot groups the original color and five complimentary colors.



71.3297, 1.8553, 18.9349



95.7178, -3.2541, 11.6115



63.6544, 22.4285, -2.3669



43.9682, -1.3365, 5.8132

0.0000, NaN, NaN



46.2646, -2.4686, 2.5136

Same Dimension

The Same Dimension uses a secret algorithm to generate beautiful new colors.



71.3297, 1.8553, 18.9349



84.4802, 4.2291, 26.0279



80.4297, -13.0781, 27.1151



36.6794, -1.2176, 4.5398



39.2827, 22.8485, 24.6058



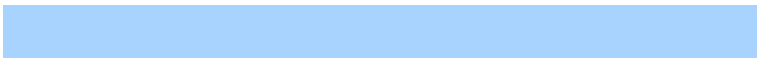
10.4704, 3.8146, 6.5186

Inverse Universe

The Inverse Universe completely reimagines the original color for something new.



67.4484, -6.3341, -14.4728



78.8245, -7.6421, -22.7243



58.6604, 8.9174, -27.9990



36.0652, -2.5250, -0.7338



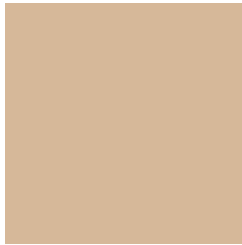
30.4582, 8.2779, -55.9398



8.5149, 0.1194, -10.9007

Previews

White Background



This preview shows how the HunterLab color 71.3281, 1.8578, 18.9339 looks on a white background.

Color Contrast Check

Large Text (above 18pt) WCAG AA × Fail

Any Text WCAG AA × Fail

Large Text (above 18pt) WCAG AAA × Fail

Any Text WCAG AAA × Fail

Black Background



This preview shows how the HunterLab color 71.3281, 1.8578, 18.9339 looks on a black background.

Color Contrast Check

Large Text (above 18pt) WCAG AA ✓ Pass

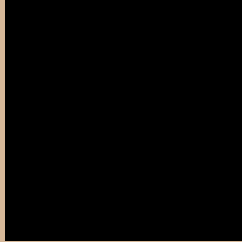
Any Text WCAG AA ✓ Pass

Large Text (above 18pt) WCAG AAA ✓ Pass

Any Text WCAG AAA ✓ Pass

If you want to check with other color combinations, try the [Color Contrast Checker](#).

HunterLab 71.3281, 1.8578, 18.9339 Background



This preview shows how black text looks on a background with the HunterLab color 71.3281, 1.8578, 18.9339.



This preview shows how white text looks on a background with the HunterLab color 71.3281, 1.8578,

Color Blindness Simulation

Color vision deficiency is a very complex topic, and I could not describe the different causes any better than Wikipedia does, so if you want to learn more, you should check out their [article about color blindness](#).

Dichromacy



Original Color

71.3281, 1.8578, 18.9339

Protanopia

71.4431, -5.2641, 18.1955

Deuteranopia

71.3943, 5.0527, 19.0538



Tritanopia

71.2086, 12.3728, 2.5727

Trichromacy



Original Color

71.3281, 1.8578, 18.9339

Protanomaly

71.3112, -2.6930, 18.4762

Deuteranomaly

71.4649, 3.8111, 19.1003

Tritanomaly

71.1397, 8.4211, 8.8797

Monochromacy



Original Color

71.3281, 1.8578, 18.9339

Achromatopsia

71.3359, -3.8063, 3.8758

Achromatomaly

71.1906, -1.9852, 9.6245

CSS Examples

Text

The CSS property to change the color of the text to HunterLab 71.3281, 1.8578, 18.9339 is called "color". The color property can be set on classes, ids or directly on the HTML element.

This example shows how text in the color `rgb(214, 184, 153)` looks like.

```
.text, #text, p{  
    color:rgb(214, 184, 153)  
}
```

If you want to add a text shadow in that color use the text-shadow property, you can generate a text shadow directly with our [CSS Text Shadow Generator](#).

Here you see how black text with a 4 pixel rgb(214, 184, 153) colored shadow looks like.

```
.shadow{ text-shadow: 4px 4px 2px rgb(214, 184, 153) }
```

Border

The CSS property to change the border of an element to HunterLab 71.3281, 1.8578, 18.9339 is called "border". The border property can be set on classes, ids or directly on the HTML element.

This example shows the color as border, it can be applied via the CSS property "border" or "border-color".

```
.border, #border, table{ border:4px solid rgb(214, 184, 153) }
```


If only the border color should be changed use the property `border-color`.

```
.border{ border-color:rgb(214, 184, 153) }
```

If you want to add a box shadow in that color use:

Here you see how a box with a 4 pixel `rgb(214, 184, 153)` colored shadow looks like.

```
.boxshadow{ -moz-box-shadow:4px 4px 4px  
4px rgb(214, 184, 153); -webkit-box-  
shadow:4px 4px 4px 4px rgb(214, 184, 153);  
box-shadow:4px 4px 4px 4px rgb(214, 184,  
153) }
```

Background

The CSS property to change the background color of an element to HunterLab 71.3281, 1.8578, 18.9339 is called "background". The background property can be set on classes, ids or directly on the HTML element.

```
.background, #background, body{  
background: rgb(214, 184, 153) }
```

If only the background color should be changed can be used:

```
.background{ background-color: rgb(214,  
184, 153) }
```

This example shows the color as background, it is applied via the CSS property "background".

To optimize and compress your CSS code, you can use our [online CSS compressor and optimizer](#) based on csstidy. If you want to create a linear or radial gradient as background or border, check our [CSS Gradient Generator](#).

Hey! You found this booklet interesting? Support Converting Colors with the new Membership Option!

The pro membership hides all ads, plus gives you double the colors in the color bucket, and more awesome pro features!

[Learn more, Memberships starting at \\$2.50/m!](#)

**Follow me
on Twitter!**

@ConvertingColor