

Converting Colors

HunterLab(71.3567, 5.5096,
3.4404)

Have a look what the booklet for
HunterLab(71.3567, 5.5096, 3.4404)
contains.

HunterLab(71.3092, 5.2739, 3.5285)	3
<i>Conversions</i>	4
<i>Details</i>	6
<i>Harmonies</i>	12
<i>Previews</i>	24
<i>Color Blindness Simulation</i>	28
<i>CSS Examples</i>	31

Color

**HunterLab(71.3092, 5.2739,
3.5285)**

Conversions

Conversions Part 1

Format	Color
Hex	CFB7BE
RGB	207, 183, 190
RGB Percent	81%, 72%, 75%
CMY	0.1882, 0.2823, 0.2549
CMYK	0.00, 0.12, 0.08, 0.19
HSL	343°, 20%, 76%
HSV	343°, 12%, 81%
XYZ	51.9598, 50.8500, 55.7916
YIQ	190.9740, 12.0570, 7.2650

Conversions

Conversions Part 2

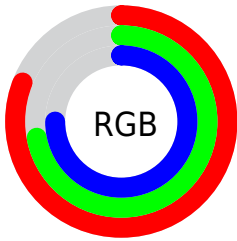
Format	Color
R _Y B	207, 183, 190
Decimal	13612990
CIE Lab	76.59, 9.74, -0.41
CIE LCh	77, 9.753, 357.616
Yxy	50.8523, 0.3276, 0.3206
Android (android.graphics.Color)	4291803070 (0xFFCFB7BE)
YUV	190.9740, -0.4802, 14.0548
Hunter-Lab	71.3092, 5.2739, 3.5285

Details

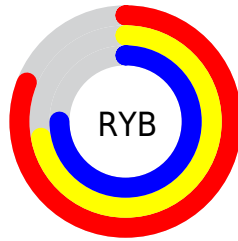
The HunterLab color $71.3092, 5.2739, 3.5285$ is a light color, and the websafe version is hex `CCCCCC`. A complement of this color would be $76.7231, -12.6602, 4.8252$, and the grayscale version is $72.1687, -3.8507, 3.9211$.

A 20% lighter version of the original color is $94.6820, 1.6063, 3.7730$, and $49.5416, 5.6654, 2.3026$ is the 20% darker color. If you saturate the color by 10%, you get $65.0554, 13.6785, 3.2050$, and if you desaturate by 10%, it is $77.9120, -2.9284, 4.1657$.

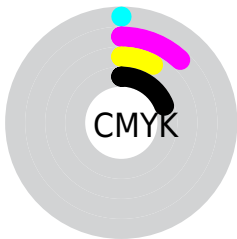
Distribution



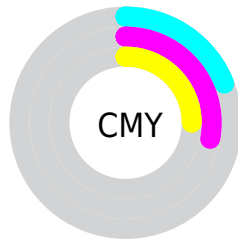
- Red (81%)
- Green (72%)
- Blue (75%)



- Red (81%)
- Yellow (72%)
- Blue (75%)



- Cyan (0%)
- Magenta (12%)
- Yellow (8%)
- Black (19%)




- Cyan (19%)
- Magenta (28%)
- Yellow (25%)

Brightness & Saturation Gradients


These gradients show how the HunterLab color 71.3092, 5.2739, 3.5285 changes by changing the brightness by 10 percent. The first figure shows a shift by +10% for each color and the second figure -10%.


Similar to the brightness gradients but the following saturation gradients show a change of the HunterLab color 71.3092, 5.2739, 3.5285 by changing the saturation by 10% instead.


 71.3092, 5.2739,
3.5285

 71.3092, 5.2739,
3.5285

197.4815, 2.0526,
10.2559

 60.0758, 5.3928,
2.9376


 95.6224, 4.8632,
4.8171

 49.5020, 5.4501,
2.3827


108.6407, 4.5843,
5.5089

 39.6337, 5.4361,
1.8677


122.2015, 4.2604,
6.2309

 30.5254, 5.3401,
1.3958

136.2837, 3.8944,
6.9820

 22.2467, 5.1472,
0.9716

150.8689, 3.4886,
7.7609

 14.8911, 4.8358,
0.6008

165.9401, 3.0452,

 8.5410, 4.5824,

8.5667

0.2680

181.4823, 2.5660,
9.3987

0.0000, NaN, NaN

0.0000, NaN, NaN

■ 71.3092, 5.2739,
3.5285

■ 71.3092, 5.2739,
3.5285

■ 65.0554, 13.6785,
3.2050

■ 77.9120, -2.9284,
4.1657

■ 59.2079, 22.2565,
3.2600

■ 84.8096, -10.9226,
5.0565

■ 53.8448, 30.9061,
3.7725

■ 91.9642, -18.7278,
6.1571

■ 49.0583, 39.4197,
4.8211

■ 95.7099, -21.0177,
3.2612

■ 44.9526, 47.4349,

■ 95.9195, -19.8359,

6.4633

0.2787

■ 41.6329, 54.4173,
8.7001

■ 39.1820, 59.7347,
11.4320

■ 37.6244, 62.8755,
14.4380

■ 36.8721, 64.0396,
16.8882

Harmonies

Analogous

The Analogous color harmony consists of three colors that are next to each other on the color wheel.



71.3108, 3.8375, -0.7872



71.3092, 5.2739, 3.5285



71.3108, 4.2223, 7.6832

Triad

The Triadic color harmony groups three colors that are evenly spaced from another and form a triangle on the color wheel.



71.3108, 5.2719, 3.5297



71.3108, -7.8741, 10.9609



71.3108, -8.4977, -3.6180

Complementary

The Complementary color scheme is a pair of colors which are on the opposite of each other on the color wheel.



71.3092, 5.2739, 3.5285



76.7231, -12.6602, 4.8252

Split Complementary

Split-complementary colors differ from the complementary color scheme. The scheme consists of three colors, the original color and two neighbors of the complement color.



71.3108, -11.4995, -0.1415



71.3092, 5.2739, 3.5285



71.3108, -11.1459, 8.2547

Square

The Square scheme is like the rectangle color scheme, but the four colors are evenly spaced on the color wheel.



71.3108, 5.2719, 3.5297



71.3108, -3.4394, 11.8081



71.3108, -12.4567, 4.2318



71.3108, -4.1774, -5.0741

Rectangle

The Rectangle color scheme consists of four colors that form a rectangle on the color wheel.



71.3092, 5.2739, 3.5285



71.3108, 2.2696, 9.8372



71.3108, -12.4567, 4.2318



71.3108, -9.6902, -2.6365

Sweetspot

The Sweet Spot groups the original color and five complimentary colors.



71.3108, 5.2719, 3.5297



97.4021, -2.2246, 5.1359



71.1520, 5.8458, -5.2447



44.7442, -0.6426, 2.3417

0.0000, NaN, NaN



46.2646, -2.4686, 2.5136

Same Dimension

The Same Dimension uses a secret algorithm to generate beautiful new colors.



71.3108, 5.2719, 3.5297



88.1910, 9.3923, 4.3217



72.5034, 1.6861, 8.0684



34.4444, 1.6427, 1.7259



29.2919, 50.9223, 13.0437



7.0257, 12.4059, 1.6392

Inverse Universe

The Inverse Universe completely reimagines the original color for something new.



71.3108, 5.2719, 3.5297



88.1910, 9.3923, 4.3217



75.4379, -9.0690, -0.0703



34.4444, 1.6427, 1.7259



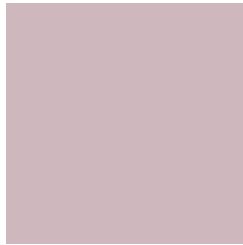
29.2919, 50.9223, 13.0437



7.0257, 12.4059, 1.6392

Previews

White Background



This preview shows how the HunterLab color 71.3092, 5.2739, 3.5285 looks on a white background.

Color Contrast Check

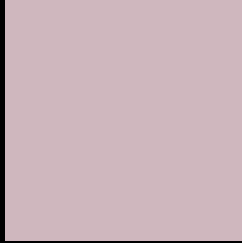
Large Text (above 18pt) WCAG AA × Fail

Any Text WCAG AA × Fail

Large Text (above 18pt) WCAG AAA × Fail

Any Text WCAG AAA × Fail

Black Background



This preview shows how the HunterLab color 71.3092, 5.2739, 3.5285 looks on a black background.

Color Contrast Check

Large Text (above 18pt) WCAG AA ✓ Pass

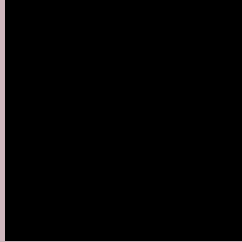
Any Text WCAG AA ✓ Pass

Large Text (above 18pt) WCAG AAA ✓ Pass

Any Text WCAG AAA ✓ Pass

If you want to check with other color combinations, try the [Color Contrast Checker](#).

HunterLab 71.3092, 5.2739, 3.5285 Background



This preview shows how black text looks on a background with the HunterLab color 71.3092, 5.2739, 3.5285.



This preview shows how white text looks on a background with the HunterLab color 71.3092, 5.2739,

3.5285.

Color Blindness Simulation

Color vision deficiency is a very complex topic, and I could not describe the different causes any better than Wikipedia does, so if you want to learn more, you should check out their [article about color blindness](#).

Dichromacy



Original Color

71.3092, 5.2739, 3.5285

Protanopia

71.3394, -2.0028, 1.9933

Deuteranopia

71.3092, 5.2739, 3.5285



Tritanopia

71.3101, 7.1338, 0.6443

Trichromacy



Original Color

71.3092, 5.2739, 3.5285

Protanomaly

71.2698, 0.7548, 2.4428

Deuteranomaly

71.3092, 5.2739, 3.5285

Tritanomaly

71.2466, 6.7957, 1.5473

Monochromacy



Original Color

71.3092, 5.2739, 3.5285

Achromatopsia

72.1800, -3.8513, 3.9217

Achromatomaly

71.8320, -0.4311, 3.5709

CSS Examples

Text

The CSS property to change the color of the text to HunterLab 71.3092, 5.2739, 3.5285 is called "color". The color property can be set on classes, ids or directly on the HTML element.

This example shows how text in the color `rgb(207, 183, 190)` looks like.

```
.text, #text, p{  
    color:rgb(207, 183, 190)  
}
```

If you want to add a text shadow in that color use the text-shadow property, you can generate a text shadow directly with our [CSS Text Shadow Generator](#).

Here you see how black text with a 4 pixel rgb(207, 183, 190) colored shadow looks like.

```
.shadow{ text-shadow: 4px 4px 2px rgb(207, 183, 190) }
```

Border

The CSS property to change the border of an element to HunterLab 71.3092, 5.2739, 3.5285 is called "border". The border property can be set on classes, ids or directly on the HTML element.

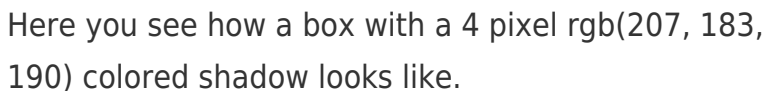
This example shows the color as border, it can be applied via the CSS property "border" or "border-color".

```
.border, #border, table{ border:4px solid rgb(207, 183, 190) }
```


If only the border color should be changed use the property `border-color`.

```
.border{ border-color:rgb(207, 183, 190) }
```

If you want to add a box shadow in that color use:



Here you see how a box with a 4 pixel `rgb(207, 183, 190)` colored shadow looks like.

```
.boxshadow{ -moz-box-shadow:4px 4px 4px  
4px rgb(207, 183, 190); -webkit-box-  
shadow:4px 4px 4px 4px rgb(207, 183, 190);  
box-shadow:4px 4px 4px 4px rgb(207, 183,  
190) }
```

Background

The CSS property to change the background color of an element to HunterLab 71.3092, 5.2739, 3.5285 is called "background". The background property can be set on classes, ids or directly on the HTML element.

```
.background, #background, body{  
background: rgb(207, 183, 190) }
```

If only the background color should be changed can be used:

```
.background{ background-color: rgb(207,  
183, 190) }
```

This example shows the color as background, it is applied via the CSS property "background".

To optimize and compress your CSS code, you can use our [online CSS compressor and optimizer](#) based on csstidy. If you want to create a linear or radial gradient as background or border, check our [CSS Gradient Generator](#).

Hey! You found this booklet interesting? Support Converting Colors with the new Membership Option!

The pro membership hides all ads, plus gives you double the colors in the color bucket, and more awesome pro features!

[Learn more, Memberships starting at \\$2.50/m!](#)

**Follow me
on Twitter!**

@ConvertingColor