

Converting Colors

HunterLab(71.3598, 8.0262,
7.9144)

Have a look what the booklet for
HunterLab(71.3598, 8.0262, 7.9144)
contains.

HunterLab(71.4023, 7.9999, 7.8375)	3
<i>Conversions</i>	4
<i>Details</i>	6
<i>Harmonies</i>	12
<i>Previews</i>	24
<i>Color Blindness Simulation</i>	28
<i>CSS Examples</i>	31

Color

**HunterLab(71.4023, 7.9999,
7.8375)**

Conversions

Conversions Part 1

Format	Color
Hex	D8B5B5
RGB	216, 181, 181
RGB Percent	85%, 71%, 71%
CMY	0.1529, 0.2902, 0.2902
CMYK	0.00, 0.16, 0.16, 0.15
HSL	0°, 31%, 78%
HSV	0°, 16%, 85%
XYZ	53.1833, 50.9829, 50.7537
YIQ	191.4650, 20.8600, 7.4200

Conversions

Conversions Part 2

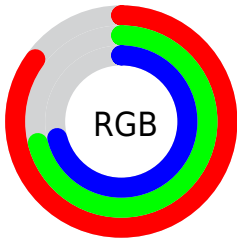
Format	Color
R _Y B	216, 181, 181
Decimal	14202293
CIE Lab	76.67, 12.58, 4.70
CIE LCh	77, 13.432, 20.497
Yxy	50.9852, 0.3433, 0.3291
Android (android.graphics.Color)	4292392373 (0xFFD8B5B5)
YUV	191.4650, -5.1592, 21.5172
Hunter-Lab	71.4023, 7.9999, 7.8375

Details

The HunterLab color **71.4023, 7.9999, 7.8375** is a light color, and the websafe version is hex **CC9999**. A complement of this color would be **79.9324, -14.8123, 0.8059**, and the grayscale version is **72.3928, -3.8627, 3.9332**.

A 20% lighter version of the original color is **93.7778, 1.1265, 7.1497**, and **49.5721, 7.9985, 6.2606** is the 20% darker color. If you saturate the color by 10%, you get **64.8482, 16.1082, 10.0845**, and if you desaturate by 10%, it is **78.3686, 0.2307, 5.7374**.

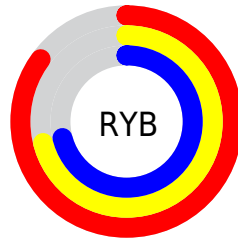
Distribution



Red (85%)

Green (71%)

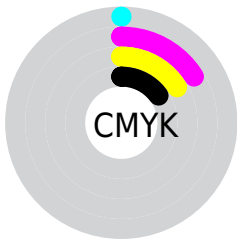
Blue (71%)



Red (85%)

Yellow (71%)

Blue (71%)

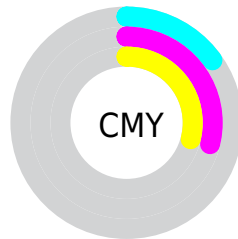


Cyan (0%)

Magenta (16%)

Yellow (16%)

Black (15%)



Cyan (15%)

Magenta (29%)

Yellow (29%)

Brightness & Saturation Gradients


These gradients show how the HunterLab color 71.4023, 7.9999, 7.8375 changes by changing the brightness by 10 percent. The first figure shows a shift by +10% for each color and the second figure -10%.


Similar to the brightness gradients but the following saturation gradients show a change of the HunterLab color 71.4023, 7.9999, 7.8375 by changing the saturation by 10% instead.


 71.4023, 7.9999,
7.8375

 71.4023, 7.9999,
7.8375


197.6123, 5.7750,
16.3868

 60.1638, 7.9846,
6.9941


 95.7251, 7.8390,
9.5912

 49.5845, 7.9011,
6.1701


108.7479, 7.6777,
10.4995

 39.7103, 7.7378,
5.3655

122.3129, 7.4672,
11.4289

 30.5956, 7.4828,
4.5780

136.3993, 7.2107,
12.3794

 22.3099, 7.1194,
3.8038

150.9884, 6.9109,
13.3507

 14.9464, 6.6237,
3.0343

166.0636, 6.5703,

 8.5931, 6.1558,

14.3425

2.7365

181.6095, 6.1911,
15.3547

0.0000, NaN, NaN

0.0000, NaN, NaN

■ 71.4023, 7.9999,
7.8375

■ 71.4023, 7.9999,
7.8375

■ 64.8482, 16.1082,
10.0845

■ 78.3686, 0.2307,
5.7374

■ 58.7799, 24.5374,
12.4721

■ 85.6802, -7.2103,
3.7704

■ 53.2958, 33.1761,
14.9718

■ 93.2896, -14.3608,
1.9220

■ 48.5110, 41.7721,
17.5074

■ 96.6121, -17.3300,
1.1686

■ 44.5504, 49.8720,

19.9359

■ 41.5284, 56.8224,
22.0464

■ 39.5112, 61.9175,
23.6073

■ 38.4650, 64.7263,
24.4721

■ 38.2094, 65.4312,
24.6899

Harmonies

Analogous

The Analogous color harmony consists of three colors that are next to each other on the color wheel.



71.4039, 8.6434, 1.9406



71.4023, 7.9999, 7.8375



71.4039, 4.1276, 12.2874

Triad

The Triadic color harmony groups three colors that are evenly spaced from another and form a triangle on the color wheel.



71.4039, 7.9976, 7.8387



71.4039, -13.0006, 10.8934



71.4039, -5.8203, -8.5559

Complementary

The Complementary color scheme is a pair of colors which are on the opposite of each other on the color wheel.



71.4023, 7.9999, 7.8375



79.9324, -14.8123, 0.8059

Split Complementary

Split-complementary colors differ from the complementary color scheme. The scheme consists of three colors, the original color and two neighbors of the complement color.



71.4039, -11.4225, -5.6776



71.4023, 7.9999, 7.8375



71.4039, -15.4714, 5.7796

Square

The Square scheme is like the rectangle color scheme, but the four colors are evenly spaced on the color wheel.



71.4039, 7.9976, 7.8387



71.4039, -8.0427, 13.9410



71.4039, -14.9040, -0.3049



71.4039, 0.5160, -7.8825

Rectangle

The Rectangle color scheme consists of four colors that form a rectangle on the color wheel.



71.4023, 7.9999, 7.8375



71.4039, 0.3122, 13.9995



71.4039, -14.9040, -0.3049



71.4039, -7.8481, -7.9628

Sweetspot

The Sweet Spot groups the original color and five complimentary colors.



71.4039, 7.9976, 7.8387



95.5719, -0.7794, 6.6412



72.5295, 13.9402, -8.1710



43.9318, -0.0607, 3.1526

0.0000, NaN, NaN



46.2646, -2.4686, 2.5136

Same Dimension

The Same Dimension uses a secret algorithm to generate beautiful new colors.



71.4039, 7.9976, 7.8387



83.7577, 12.5201, 10.2473



76.5199, -1.0177, 13.2602



35.2435, 1.2456, 2.9631



29.3964, 50.3387, 18.9952



7.2201, 12.3608, 4.6654

Inverse Universe

The Inverse Universe completely reimagines the original color for something new.



79.9324, -14.8123, 0.8059



95.8839, -19.9560, 0.2329



74.4308, -6.1232, -5.9940



37.5602, -4.9373, 1.0571



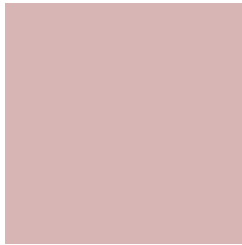
56.5654, -29.9841, -5.9749



13.8923, -7.3642, -1.4670

Previews

White Background



This preview shows how the HunterLab color 71.4023, 7.9999, 7.8375 looks on a white background.

Color Contrast Check

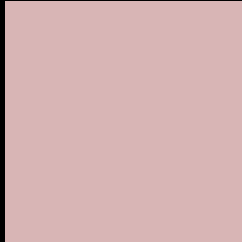
Large Text (above 18pt) WCAG AA × Fail

Any Text WCAG AA × Fail

Large Text (above 18pt) WCAG AAA × Fail

Any Text WCAG AAA × Fail

Black Background



This preview shows how the HunterLab color 71.4023, 7.9999, 7.8375 looks on a black background.

Color Contrast Check

Large Text (above 18pt) WCAG AA ✓ Pass

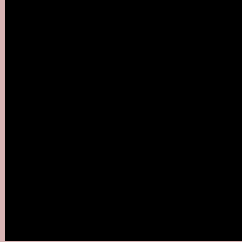
Any Text WCAG AA ✓ Pass

Large Text (above 18pt) WCAG AAA ✓ Pass

Any Text WCAG AAA ✓ Pass

If you want to check with other color combinations, try the [Color Contrast Checker](#).

HunterLab 71.4023, 7.9999, 7.8375 Background



This preview shows how black text looks on a background with the HunterLab color 71.4023, 7.9999, 7.8375.



This preview shows how white text looks on a background with the HunterLab color 71.4023, 7.9999,

7.8375.

Color Blindness Simulation

Color vision deficiency is a very complex topic, and I could not describe the different causes any better than Wikipedia does, so if you want to learn more, you should check out their [article about color blindness](#).

Dichromacy



Original Color

71.4023, 7.9999, 7.8375

Protanopia

71.6710, -2.8826, 6.1429

Deuteranopia

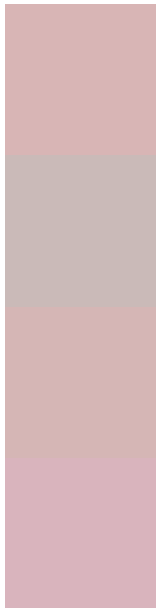
71.4507, 5.2136, 7.8432



Tritanopia

71.4114, 11.6562, 2.3191

Trichromacy



Original Color

71.4023, 7.9999, 7.8375

Protanomaly

71.5088, 1.0867, 6.4836

Deuteranomaly

71.3710, 6.4265, 7.7748

Tritanomaly

71.4621, 10.1282, 4.2682

Monochromacy



Original Color

71.4023, 7.9999, 7.8375

Achromatopsia

72.1800, -3.8513, 3.9217

Achromatomaly

71.6993, 0.3971, 5.3109

CSS Examples

Text

The CSS property to change the color of the text to HunterLab 71.4023, 7.9999, 7.8375 is called "color". The color property can be set on classes, ids or directly on the HTML element.

This example shows how text in the color `rgb(216, 181, 181)` looks like.

```
.text, #text, p{  
    color:rgb(216, 181, 181)  
}
```

If you want to add a text shadow in that color use the text-shadow property, you can generate a text shadow directly with our [CSS Text Shadow Generator](#).

Here you see how black text with a 4 pixel rgb(216, 181, 181) colored shadow looks like.

```
.shadow{ text-shadow: 4px 4px 2px rgb(216, 181, 181) }
```

Border

The CSS property to change the border of an element to HunterLab 71.4023, 7.9999, 7.8375 is called "border". The border property can be set on classes, ids or directly on the HTML element.

This example shows the color as border, it can be applied via the CSS property "border" or "border-color".

```
.border, #border, table{ border:4px solid rgb(216, 181, 181) }
```


If only the border color should be changed use the property `border-color`.

```
.border{ border-color:rgb(216, 181, 181) }
```

If you want to add a box shadow in that color use:

Here you see how a box with a 4 pixel `rgb(216, 181, 181)` colored shadow looks like.

```
.boxshadow{ -moz-box-shadow:4px 4px 4px  
4px rgb(216, 181, 181); -webkit-box-  
shadow:4px 4px 4px 4px rgb(216, 181, 181);  
box-shadow:4px 4px 4px 4px rgb(216, 181,  
181) }
```

Background

The CSS property to change the background color of an element to HunterLab 71.4023, 7.9999, 7.8375 is called "background". The background property can be set on classes, ids or directly on the HTML element.

```
.background, #background, body{  
background: rgb(216, 181, 181) }
```

If only the background color should be changed can be used:

```
.background{ background-color: rgb(216,  
181, 181) }
```

This example shows the color as background, it is applied via the CSS property "background".

To optimize and compress your CSS code, you can use our [online CSS compressor and optimizer](#) based on csstidy. If you want to create a linear or radial gradient as background or border, check our [CSS Gradient Generator](#).

Hey! You found this booklet interesting? Support Converting Colors with the new Membership Option!

The pro membership hides all ads, plus gives you double the colors in the color bucket, and more awesome pro features!

[Learn more, Memberships starting at \\$2.50/m!](#)

**Follow me
on Twitter!**

@ConvertingColor