

Converting Colors

HunterLab(71.3706, 9.9624,
9.0886)

Have a look what the booklet for
HunterLab(71.3706, 9.9624, 9.0886)
contains.

HunterLab(71.1830, 10.0167, 8.9557)	3
<i>Conversions</i>	4
<i>Details</i>	6
<i>Harmonies</i>	12
<i>Previews</i>	24
<i>Color Blindness Simulation</i>	28
<i>CSS Examples</i>	31

Color

**HunterLab(71.1830, 10.0167,
8.9557)**

Conversions

Conversions Part 1

Format	Color
Hex	DCB3B2
RGB	220, 179, 178
RGB Percent	86%, 70%, 70%
CMY	0.1373, 0.2980, 0.3020
CMYK	0.00, 0.19, 0.19, 0.14
HSL	1°, 37%, 78%
HSV	1°, 19%, 86%
XYZ	53.6712, 50.6702, 49.0710
YIQ	191.1450, 24.7570, 8.3810

Conversions

Conversions Part 2

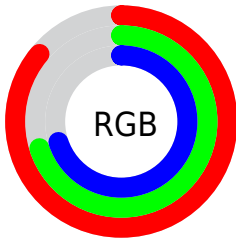
Format	Color
R _Y B	220, 179, 178
Decimal	14463922
CIE Lab	76.48, 14.66, 6.11
CIE LCh	76, 15.878, 22.628
Yxy	50.6725, 0.3498, 0.3303
Android (android.graphics.Color)	4292654002 (0xFFDCB3B2)
YUV	191.1450, -6.4805, 25.3058
Hunter-Lab	71.1830, 10.0167, 8.9557

Details

The HunterLab color **71.1830, 10.0167, 8.9557** is a light color, and the websafe version is hex **CC9999**. A complement of this color would be **80.8045, -16.3558, -0.1774**, and the grayscale version is **72.2618, -3.8557, 3.9261**.

A 20% lighter version of the original color is **93.0683, 1.6894, 7.7880**, and **49.2898, 9.6107, 7.2020** is the 20% darker color. If you saturate the color by 10%, you get **64.7381, 18.1286, 11.4026**, and if you desaturate by 10%, it is **78.0493, 2.2501, 6.6225**.

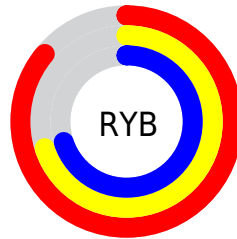
Distribution



Red (86%)

Green (70%)

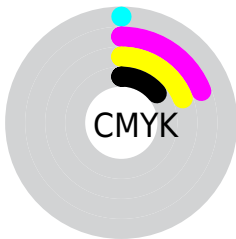
Blue (70%)



Red (86%)

Yellow (70%)

Blue (70%)

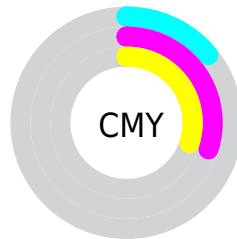


Cyan (0%)

Magenta (19%)

Yellow (19%)

Black (14%)



Cyan (14%)

Magenta (30%)

Yellow (30%)

Brightness & Saturation Gradients

These gradients show how the HunterLab color 71.1830, 10.0167, 8.9557 changes by changing the brightness by 10 percent. The first figure shows a shift by +10% for each color and the second figure -10%.

Similar to the brightness gradients but the following saturation gradients show a change of the HunterLab color 71.1830, 10.0167, 8.9557 by changing the saturation by 10% instead.

71.1830, 10.0167,
8.9557

71.1830, 10.0167,
8.9557

197.3043, 8.5240,
18.0161

59.9567, 9.9032,
8.0405

95.4832, 10.0392,
10.8409

49.3903, 9.7164,
7.1396

108.4955, 9.9643,
11.8101

39.5300, 9.4442,
6.2516

122.0505, 9.8370,
12.7978

30.4303, 9.0734,
5.3727

136.1272, 9.6610,
13.8041

22.1612, 8.5862,
4.4958

150.7069, 9.4392,
14.8292

14.8163, 7.9581,
3.6077

165.7730, 9.1742,

8.4699, 7.4225,

15.8730

3.4507

181.3101, 8.8685,
16.9353

0.0000, NaN, NaN

0.0000, NaN, NaN

■ 71.1830, 10.0167,
8.9557

■ 71.1830, 10.0167,
8.9557

■ 64.7381, 18.1286,
11.4026

■ 78.0493, 2.2501,
6.6225

■ 58.7890, 26.5583,
13.9436

■ 85.2687, -5.1762,
4.3985

■ 53.4343, 35.1793,
16.5324

■ 92.7927, -12.2981,
2.2759

■ 48.7871, 43.7210,
19.0723

■ 96.9308, -16.1835,
1.5759

■ 44.9675, 51.7164,

21.4032

■ 42.0809, 58.5171,
23.3125

■ 40.1810, 63.4525,
24.5950

■ 39.2131, 66.1386,
25.2339

■ 39.1534, 66.3019,
25.2869

Harmonies

Analogous

The Analogous color harmony consists of three colors that are next to each other on the color wheel.



71.1846, 11.0830, 2.0907



71.1830, 10.0167, 8.9557



71.1846, 5.1712, 13.9442

Triad

The Triadic color harmony groups three colors that are evenly spaced from another and form a triangle on the color wheel.



71.1846, 10.0143, 8.9569



71.1846, -14.9117, 11.7142



71.1846, -5.6443, -11.1288

Complementary

The Complementary color scheme is a pair of colors which are on the opposite of each other on the color wheel.



71.1830, 10.0167, 8.9557



80.8045, -16.3558, -0.1774

Split Complementary

Split-complementary colors differ from the complementary color scheme. The scheme consists of three colors, the original color and two neighbors of the complement color.



71.1846, -12.3517, -7.9214



71.1830, 10.0167, 8.9557



71.1846, -17.5563, 5.6139

Square

The Square scheme is like the rectangle color scheme, but the four colors are evenly spaced on the color wheel.



71.1846, 10.0143, 8.9569



71.1846, -9.2698, 15.4173



71.1846, -16.6389, -1.6121



71.1846, 1.8359, -9.9971

Rectangle

The Rectangle color scheme consists of four colors that form a rectangle on the color wheel.



71.1830, 10.0167, 8.9557



71.1846, 0.5583, 15.7711



71.1846, -16.6389, -1.6121



71.1846, -8.0599, -10.5119

Sweetspot

The Sweet Spot groups the original color and five complimentary colors.



71.1846, 10.0143, 8.9569



94.8116, -0.0502, 7.0153



72.2408, 17.5379, -10.3523



43.6068, 0.2469, 3.3266

0.0000, NaN, NaN



46.2646, -2.4686, 2.5136

Same Dimension

The Same Dimension uses a secret algorithm to generate beautiful new colors.



71.1846, 10.0143, 8.9569



80.9546, 15.7207, 11.7574



77.2012, -0.6825, 15.2111



36.1954, 1.1671, 3.1168



30.0332, 50.6626, 19.3932



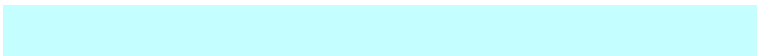
7.7611, 12.5022, 5.0012

Inverse Universe

The Inverse Universe completely reimagines the original color for something new.



80.8045, -16.3558, -0.1774



94.6738, -21.9717, -1.2957



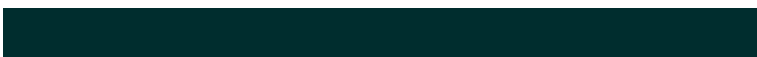
74.2687, -6.0930, -8.3972



38.4361, -4.9546, 0.9956



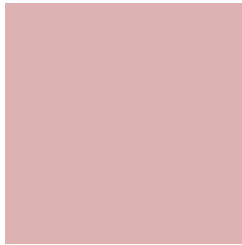
56.1278, -28.8405, -7.8965



14.3465, -7.4131, -1.9290

Previews

White Background



This preview shows how the HunterLab color 71.1830, 10.0167, 8.9557 looks on a white background.

Color Contrast Check

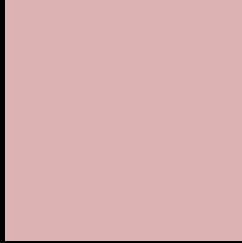
Large Text (above 18pt) WCAG AA × Fail

Any Text WCAG AA × Fail

Large Text (above 18pt) WCAG AAA × Fail

Any Text WCAG AAA × Fail

Black Background



This preview shows how the HunterLab color 71.1830, 10.0167, 8.9557 looks on a black background.

Color Contrast Check

Large Text (above 18pt) WCAG AA ✓ Pass

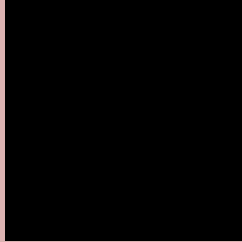
Any Text WCAG AA ✓ Pass

Large Text (above 18pt) WCAG AAA ✓ Pass

Any Text WCAG AAA ✓ Pass

If you want to check with other color combinations, try the [Color Contrast Checker](#).

HunterLab 71.1830, 10.0167, 8.9557 Background



This preview shows how black text looks on a background with the HunterLab color 71.1830, 10.0167, 8.9557.



This preview shows how white text looks on a background with the HunterLab color 71.1830, 10.0167,

8.9557.

Color Blindness Simulation

Color vision deficiency is a very complex topic, and I could not describe the different causes any better than Wikipedia does, so if you want to learn more, you should check out their [article about color blindness](#).

Dichromacy



Original Color

71.1830, 10.0167, 8.9557

Protanopia

71.3125, -2.7006, 6.6481

Deuteranopia

71.0486, 5.1212, 9.1586



Tritanopia

71.2288, 13.8073, 3.1040

Trichromacy



Original Color

71.1830, 10.0167, 8.9557

Protanomaly

71.2254, 1.4589, 7.5239

Deuteranomaly

71.0762, 6.6893, 9.2164

Tritanomaly

71.2447, 12.1245, 5.4535

Monochromacy



Original Color

71.1830, 10.0167, 8.9557

Achromatopsia

72.1800, -3.8513, 3.9217

Achromatomaly

71.8626, 0.8957, 5.9701

CSS Examples

Text

The CSS property to change the color of the text to HunterLab 71.1830, 10.0167, 8.9557 is called "color". The color property can be set on classes, ids or directly on the HTML element.

This example shows how text in the color `rgb(220, 179, 178)` looks like.

```
.text, #text, p{  
    color:rgb(220, 179, 178)  
}
```

If you want to add a text shadow in that color use the text-shadow property, you can generate a text shadow directly with our [CSS Text Shadow Generator](#).

Here you see how black text with a 4 pixel rgb(220, 179, 178) colored shadow looks like.

```
.shadow{ text-shadow: 4px 4px 2px rgb(220, 179, 178) }
```

Border

The CSS property to change the border of an element to HunterLab 71.1830, 10.0167, 8.9557 is called "border". The border property can be set on classes, ids or directly on the HTML element.

This example shows the color as border, it can be applied via the CSS property "border" or "border-color".

```
.border, #border, table{ border:4px solid rgb(220, 179, 178) }
```


If only the border color should be changed use the property `border-color`.

```
.border{ border-color:rgb(220, 179, 178) }
```

If you want to add a box shadow in that color use:

Here you see how a box with a 4 pixel `rgb(220, 179, 178)` colored shadow looks like.

```
.boxshadow{ -moz-box-shadow:4px 4px 4px  
4px rgb(220, 179, 178); -webkit-box-  
shadow:4px 4px 4px 4px rgb(220, 179, 178);  
box-shadow:4px 4px 4px 4px rgb(220, 179,  
178) }
```

Background

The CSS property to change the background color of an element to HunterLab 71.1830, 10.0167, 8.9557 is called "background". The background property can be set on classes, ids or directly on the HTML element.

```
.background, #background, body{  
background: rgb(220, 179, 178) }
```

If only the background color should be changed can be used:

```
.background{ background-color: rgb(220,  
179, 178) }
```

This example shows the color as background, it is applied via the CSS property "background".

To optimize and compress your CSS code, you can use our [online CSS compressor and optimizer](#) based on csstidy. If you want to create a linear or radial gradient as background or border, check our [CSS Gradient Generator](#).

Hey! You found this booklet interesting? Support Converting Colors with the new Membership Option!

The pro membership hides all ads, plus gives you double the colors in the color bucket, and more awesome pro features!

[Learn more, Memberships starting at \\$2.50/m!](#)

**Follow me
on Twitter!**

@ConvertingColor