

Converting Colors

HunterLab(71.4236, 2.1325,
7.7587)

Have a look what the booklet for
HunterLab(71.4236, 2.1325, 7.7587)
contains.

HunterLab(71.4236, 2.1325, 7.7587)	3
<i>Conversions</i>	4
<i>Details</i>	6
<i>Harmonies</i>	12
<i>Previews</i>	24
<i>Color Blindness Simulation</i>	28
<i>CSS Examples</i>	31

Color

**HunterLab(71.4236, 2.1325,
7.7587)**

Conversions

Conversions Part 1

Format	Color
Hex	CDB9B5
RGB	205, 185, 181
RGB Percent	80%, 73%, 71%
CMY	0.1961, 0.2745, 0.2902
CMYK	0.00, 0.10, 0.12, 0.20
HSL	10°, 19%, 76%
HSV	10°, 12%, 80%
XYZ	50.8663, 51.0133, 50.8817
YIQ	190.5240, 13.2040, 2.9960

Conversions

Conversions Part 2

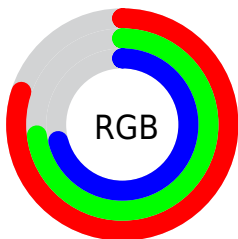
Format	Color
R _Y B	205, 186, 181
Decimal	13482421
CIE Lab	76.69, 6.43, 4.60
CIE LCh	77, 7.908, 35.608
Yxy	51.0156, 0.3330, 0.3339
Android (android.graphics.Color)	4291672501 (0xFFCDB9B5)
YUV	190.5240, -4.6953, 12.6955
Hunter-Lab	71.4236, 2.1325, 7.7587

Details

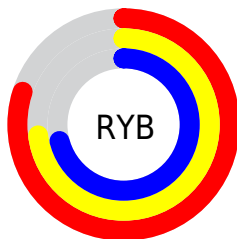
The HunterLab color $71.4236, 2.1325, 7.7587$ is a light color, and the websafe version is hex `CCCCCC`. A complement of this color would be $74.8357, -9.4066, 0.1887$, and the grayscale version is $71.9956, -3.8415, 3.9117$.

A 20% lighter version of the original color is $95.0184, -1.0020, 8.5383$, and $49.6390, 2.7072, 6.2422$ is the 20% darker color. If you saturate the color by 10%, you get $65.9640, 7.8359, 10.6839$, and if you desaturate by 10%, it is $77.1369, -3.2744, 4.7625$.

Distribution



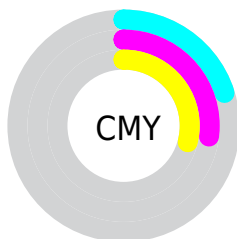
- Red (80%)
- Green (73%)
- Blue (71%)



- Red (80%)
- Yellow (73%)
- Blue (71%)



- Cyan (0%)
- Magenta (10%)
- Yellow (12%)
- Black (20%)



- Cyan (20%)
- Magenta (27%)
- Yellow (29%)

Brightness & Saturation Gradients

These gradients show how the HunterLab color 71.4236, 2.1325, 7.7587 changes by changing the brightness by 10 percent. The first figure shows a shift by +10% for each color and the second figure -10%.

Similar to the brightness gradients but the following saturation gradients show a change of the HunterLab color 71.4236, 2.1325, 7.7587 by changing the saturation by 10% instead.

■ 71.4236, 2.1325,
7.7587

■ 71.4236, 2.1325,
7.7587

197.6422, -2.2751,
16.2724

■ 60.1839, 2.4119,
6.9203

■ 95.7485, 1.4228,
9.5033

■ 49.6033, 2.6388,
6.1016

108.7723, 1.0038,
10.4073

■ 39.7278, 2.8051,
5.3027

122.3384, 0.5450,
11.3327

■ 30.6116, 2.9022,
4.5216

136.4257, 0.0487,
12.2793

■ 22.3243, 2.9185,
3.7544

151.0157, -0.4831,
13.2468

■ 14.9591, 2.8365,
2.9931

166.0917, -1.0486,

■ 8.6049, 2.7993,

14.2351

2.6865

181.6385, -1.6464,
15.2437

0.0000, NaN, NaN

0.0000, NaN, NaN

■ 71.4236, 2.1325,
7.7587

■ 71.4236, 2.1325,
7.7587

■ 65.9640, 7.8359,
10.6839

■ 77.1369, -3.2744,
4.7625

■ 60.7914, 13.8623,
13.5035

■ 83.0679, -8.4082,
1.7125

■ 55.9539, 20.2098,
16.1713

■ 89.1924, -13.3028,
-1.3773

■ 51.5066, 26.8400,
18.6195

■ 95.2133, -19.5402,
-0.5850

■ 47.5133, 33.6504,

■ 95.7702, -20.3788,

20.7543

0.0860

■ 44.0439, 40.4446,
22.4589

■ 41.1676, 46.9121,
23.6080

■ 38.9403, 52.6418,
24.1089

■ 37.5962, 56.4860,
24.1555

Harmonies

Analogous

The Analogous color harmony consists of three colors that are next to each other on the color wheel.



71.4252, 3.4889, 4.5536



71.4236, 2.1325, 7.7587



71.4252, -0.8186, 9.8456

Triad

The Triadic color harmony groups three colors that are evenly spaced from another and form a triangle on the color wheel.



71.4252, 2.1305, 7.7598



71.4252, -10.2513, 6.6576



71.4252, -3.1103, -3.2660

Complementary

The Complementary color scheme is a pair of colors which are on the opposite of each other on the color wheel.



71.4236, 2.1325, 7.7587



74.8357, -9.4066, 0.1887

Split Complementary

Split-complementary colors differ from the complementary color scheme. The scheme consists of three colors, the original color and two neighbors of the complement color.



71.4252, -6.7626, -2.6319



71.4236, 2.1325, 7.7587



71.4252, -10.8365, 3.2157

Square

The Square scheme is like the rectangle color scheme, but the four colors are evenly spaced on the color wheel.



71.4252, 2.1305, 7.7598



71.4252, -7.9567, 9.2325



71.4252, -9.5719, -0.2138



71.4252, 0.4235, -1.9047

Rectangle

The Rectangle color scheme consists of four colors that form a rectangle on the color wheel.



71.4236, 2.1325, 7.7587



71.4252, -3.2629, 10.3821



71.4252, -9.5719, -0.2138



71.4252, -4.3652, -3.2799

Sweetspot

The Sweet Spot groups the original color and five complimentary colors.



71.4252, 2.1305, 7.7598



96.9832, -2.6020, 7.0013



70.8835, 7.5156, -2.4113



44.6088, -0.9630, 3.3750

0.0000, NaN, NaN



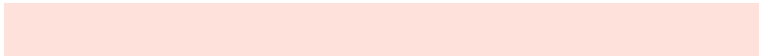
46.2646, -2.4686, 2.5136

Same Dimension

The Same Dimension uses a secret algorithm to generate beautiful new colors.



71.4252, 2.1305, 7.7598



89.6543, 4.4939, 10.8661



74.9990, -3.9541, 11.5847



33.9279, 0.3983, 3.2991



29.8229, 44.0575, 19.1480



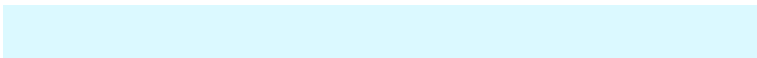
7.4522, 7.9851, 4.7318

Inverse Universe

The Inverse Universe completely reimagines the original color for something new.



74.8357, -9.4066, 0.1887



94.9239, -13.3428, -0.8344



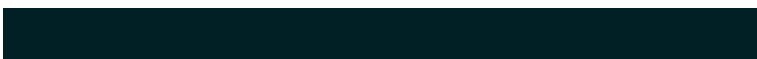
71.1530, -3.4143, -4.3441



35.2080, -3.9300, 0.4578



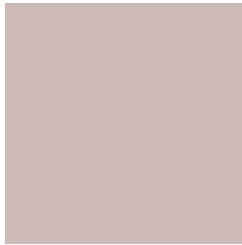
45.7706, -17.8456, -18.6856



10.8053, -4.5885, -3.6005

Previews

White Background



This preview shows how the HunterLab color 71.4236, 2.1325, 7.7587 looks on a white background.

Color Contrast Check

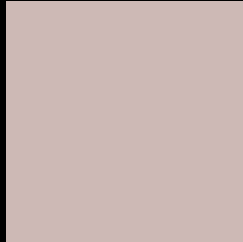
Large Text (above 18pt) WCAG AA × Fail

Any Text WCAG AA × Fail

Large Text (above 18pt) WCAG AAA × Fail

Any Text WCAG AAA × Fail

Black Background



This preview shows how the HunterLab color 71.4236, 2.1325, 7.7587 looks on a black background.

Color Contrast Check

Large Text (above 18pt) WCAG AA ✓ Pass

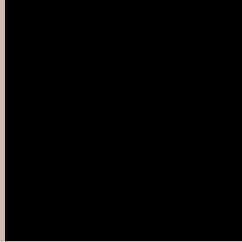
Any Text WCAG AA ✓ Pass

Large Text (above 18pt) WCAG AAA ✓ Pass

Any Text WCAG AAA ✓ Pass

If you want to check with other color combinations, try the [Color Contrast Checker](#).

HunterLab 71.4236, 2.1325, 7.7587 Background



This preview shows how black text looks on a background with the HunterLab color 71.4236, 2.1325, 7.7587.



This preview shows how white text looks on a background with the HunterLab color 71.4236, 2.1325,

7.7587.

Color Blindness Simulation

Color vision deficiency is a very complex topic, and I could not describe the different causes any better than Wikipedia does, so if you want to learn more, you should check out their [article about color blindness](#).

Dichromacy



Original Color

71.4236, 2.1325, 7.7587

Protanopia

71.6124, -3.2027, 6.9802

Deuteranopia

71.4507, 5.2136, 7.8432



Tritanopia

71.5287, 6.4466, 0.4034

Trichromacy



Original Color

71.4236, 2.1325, 7.7587

Protanomaly

71.6586, -1.5627, 7.5112

Deuteranomaly

71.5349, 4.0084, 7.9167

Tritanomaly

71.5293, 4.5840, 3.3000

Monochromacy



Original Color

71.4236, 2.1325, 7.7587

Achromatopsia

72.1800, -3.8513, 3.9217

Achromatomaly

71.9158, -1.9175, 5.5208

CSS Examples

Text

The CSS property to change the color of the text to HunterLab 71.4236, 2.1325, 7.7587 is called "color". The color property can be set on classes, ids or directly on the HTML element.

This example shows how text in the color `rgb(205, 185, 181)` looks like.

```
.text, #text, p{  
    color:rgb(205, 185, 181)  
}
```

If you want to add a text shadow in that color use the text-shadow property, you can generate a text shadow directly with our [CSS Text Shadow Generator](#).

Here you see how black text with a 4 pixel rgb(205, 185, 181) colored shadow looks like.

```
.shadow{ text-shadow: 4px 4px 2px rgb(205, 185, 181) }
```

Border

The CSS property to change the border of an element to HunterLab 71.4236, 2.1325, 7.7587 is called "border". The border property can be set on classes, ids or directly on the HTML element.

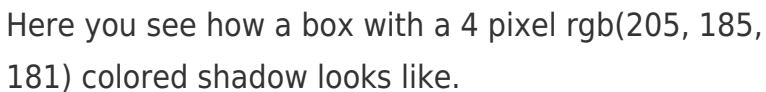
This example shows the color as border, it can be applied via the CSS property "border" or "border-color".

```
.border, #border, table{ border:4px solid rgb(205, 185, 181) }
```


If only the border color should be changed use the property `border-color`.

```
.border{ border-color:rgb(205, 185, 181) }
```

If you want to add a box shadow in that color use:



Here you see how a box with a 4 pixel `rgb(205, 185, 181)` colored shadow looks like.

```
.boxshadow{ -moz-box-shadow:4px 4px 4px 4px rgb(205, 185, 181); -webkit-box-shadow:4px 4px 4px 4px rgb(205, 185, 181); box-shadow:4px 4px 4px 4px rgb(205, 185, 181) }
```

Background

The CSS property to change the background color of an element to HunterLab 71.4236, 2.1325, 7.7587 is called "background". The background property can be set on classes, ids or directly on the HTML element.

```
.background, #background, body{  
background: rgb(205, 185, 181) }
```

If only the background color should be changed can be used:

```
.background{ background-color: rgb(205,  
185, 181) }
```

This example shows the color as background, it is applied via the CSS property "background".

To optimize and compress your CSS code, you can use our [online CSS compressor and optimizer](#) based on csstidy. If you want to create a linear or radial gradient as background or border, check our [CSS Gradient Generator](#).

Hey! You found this booklet interesting? Support Converting Colors with the new Membership Option!

The pro membership hides all ads, plus gives you double the colors in the color bucket, and more awesome pro features!

[Learn more, Memberships starting at \\$2.50/m!](#)

**Follow me
on Twitter!**

@ConvertingColor