

Converting Colors

HunterLab(71.5144, 10.9730,
4.6986)

Have a look what the booklet for
HunterLab(71.5144, 10.9730,
4.6986) contains.

HunterLab(71.6473, 10.6752, 4.9645)	3
<i>Conversions</i>	4
<i>Details</i>	6
<i>Harmonies</i>	12
<i>Previews</i>	24
<i>Color Blindness Simulation</i>	28
<i>CSS Examples</i>	31

Color

**HunterLab(71.6473, 10.6752,
4.9645)**

Conversions

Conversions Part 1

Format	Color
Hex	DBB4BC
RGB	219, 180, 188
RGB Percent	86%, 71%, 74%
CMY	0.1412, 0.2941, 0.2627
CMYK	0.00, 0.18, 0.14, 0.14
HSL	348°, 35%, 78%
HSV	348°, 18%, 86%
XYZ	54.6117, 51.3334, 54.6069
YIQ	192.5730, 20.6760, 10.7560

Conversions

Conversions Part 2

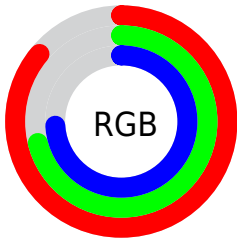
Format	Color
R _Y B	219, 180, 188
Decimal	14398652
CIE Lab	76.88, 15.32, 1.24
CIE LCh	77, 15.374, 4.624
Yxy	51.3357, 0.3401, 0.3197
Android (android.graphics.Color)	4292588732 (0xFFDDBB4BC)
YUV	192.5730, -2.2545, 23.1765
Hunter-Lab	71.6473, 10.6752, 4.9645

Details

The HunterLab color $71.6473, 10.6752, 4.9645$ is a light color, and the websafe version is hex FFCCCC . A complement of this color would be $80.6664, -17.4393, 4.1020$, and the grayscale version is $72.8495, -3.8871, 3.9580$.

A 20% lighter version of the original color is $93.6923, 2.8640, 3.6215$, and $49.8202, 10.5284, 3.6047$ is the 20% darker color. If you saturate the color by 10%, you get $65.1725, 19.5243, 5.6356$, and if you desaturate by 10%, it is $78.5394, 2.0593, 4.6336$.

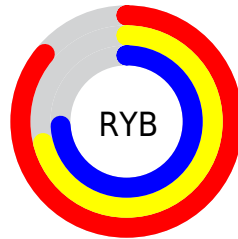
Distribution



Red (86%)

Green (71%)

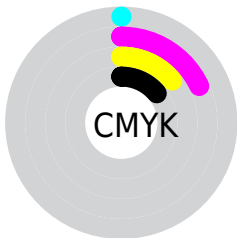
Blue (74%)



Red (86%)

Yellow (71%)

Blue (74%)

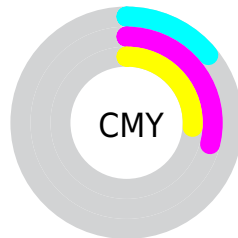


Cyan (0%)

Magenta (18%)

Yellow (14%)

Black (14%)



Cyan (14%)

Magenta (29%)

Yellow (26%)

Brightness & Saturation Gradients

These gradients show how the HunterLab color 71.6473, 10.6752, 4.9645 changes by changing the brightness by 10 percent. The first figure shows a shift by +10% for each color and the second figure -10%.

Similar to the brightness gradients but the following saturation gradients show a change of the HunterLab color 71.6473, 10.6752, 4.9645 by changing the saturation by 10% instead.

71.6473, 10.6752,
4.9645

71.6473, 10.6752,
4.9645

197.9562, 9.3970,
12.2764

60.3952, 10.5338,
4.2932

95.9952, 10.7508,
6.4017

49.8015, 10.3178,
3.6528

109.0297, 10.7010,
7.1629

39.9118, 10.0151,
3.0461

122.6060, 10.5981,
7.9514

30.7803, 9.6124,
2.4749

136.7032, 10.4457,
8.7665

22.4763, 9.0921,
1.9410

151.3028, 10.2468,
9.6072

15.0920, 8.4296,
1.4467

166.3881, 10.0042,

8.7285, 7.7345,

10.4729

1.0637

181.9438, 9.7203,
11.3629

0.0000, INF, NaN

0.0000, NaN, NaN

■ 71.6473, 10.6752,
4.9645

■ 71.6473, 10.6752,
4.9645

■ 65.1725, 19.5243,
5.6356

■ 78.5394, 2.0593,
4.6336

■ 59.1880, 28.5482,
6.7032

■ 85.7816, -6.3051,
4.5835

■ 53.7911, 37.5831,
8.2233

■ 93.3261, -14.4359,
4.7678

■ 49.0932, 46.3171,
10.2255

■ 96.8505, -16.4719,
1.4734

■ 45.2135, 54.2463,

12.6805

■ 42.2574, 60.7055,
15.4642

■ 40.2809, 65.0474,
18.3423

■ 39.2223, 67.0454,
20.9957

■ 39.0498, 67.3574,
21.4865

Harmonies

Analogous

The Analogous color harmony consists of three colors that are next to each other on the color wheel.



71.6489, 9.2703, -2.0472



71.6473, 10.6752, 4.9645



71.6489, 8.0652, 11.0640

Triad

The Triadic color harmony groups three colors that are evenly spaced from another and form a triangle on the color wheel.



71.6489, 10.6729, 4.9657



71.6489, -11.6116, 14.0193



71.6489, -9.7302, -9.2107

Complementary

The Complementary color scheme is a pair of colors which are on the opposite of each other on the color wheel.



71.6473, 10.6752, 4.9645



80.6664, -17.4393, 4.1020

Split Complementary

Split-complementary colors differ from the complementary color scheme. The scheme consists of three colors, the original color and two neighbors of the complement color.



71.6489, -14.9905, -4.0897



71.6473, 10.6752, 4.9645



71.6489, -16.0460, 9.3775

Square

The Square scheme is like the rectangle color scheme, but the four colors are evenly spaced on the color wheel.



71.6489, 10.6729, 4.9657



71.6489, -4.9524, 15.9484



71.6489, -17.2580, 2.8177



71.6489, -2.6943, -10.6896

Rectangle

The Rectangle color scheme consists of four colors that form a rectangle on the color wheel.



71.6473, 10.6752, 4.9645



71.6489, 4.4623, 13.9342



71.6489, -17.2580, 2.8177



71.6489, -11.7555, -7.8347

Sweetspot

The Sweet Spot groups the original color and five complimentary colors.



71.6489, 10.6729, 4.9657



95.6543, -0.3286, 5.4580



71.7927, 13.2099, -10.8775



43.9752, 0.1763, 2.5296

0.0000, NaN, NaN



46.2646, -2.4686, 2.5136

Same Dimension

The Same Dimension uses a secret algorithm to generate beautiful new colors.



71.6489, 10.6729, 4.9657



82.4734, 16.1997, 6.1201



74.5927, 3.6975, 11.7046



36.1870, 1.6104, 2.1822



30.0908, 51.9458, 16.2323



7.7405, 13.5222, 2.9362

Inverse Universe

The Inverse Universe completely reimagines the original color for something new.



71.6489, 10.6729, 4.9657



82.4734, 16.1997, 6.1201



77.3994, -10.5580, -3.8294



36.1870, 1.6104, 2.1822



30.0908, 51.9458, 16.2323



7.7405, 13.5222, 2.9362

Previews

White Background



This preview shows how the HunterLab color 71.6473, 10.6752, 4.9645 looks on a white background.

Color Contrast Check

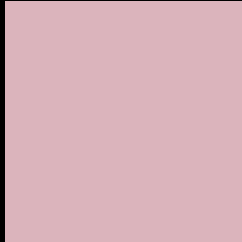
Large Text (above 18pt) WCAG AA × Fail

Any Text WCAG AA × Fail

Large Text (above 18pt) WCAG AAA × Fail

Any Text WCAG AAA × Fail

Black Background



This preview shows how the HunterLab color 71.6473, 10.6752, 4.9645 looks on a black background.

Color Contrast Check

Large Text (above 18pt) WCAG AA ✓ Pass

Any Text WCAG AA ✓ Pass

Large Text (above 18pt) WCAG AAA ✓ Pass

Any Text WCAG AAA ✓ Pass

If you want to check with other color combinations, try the [Color Contrast Checker](#).

HunterLab 71.6473, 10.6752, 4.9645 Background



This preview shows how black text looks on a background with the HunterLab color 71.6473, 10.6752, 4.9645.



This preview shows how white text looks on a background with the HunterLab color 71.6473, 10.6752,

4.9645.

Color Blindness Simulation

Color vision deficiency is a very complex topic, and I could not describe the different causes any better than Wikipedia does, so if you want to learn more, you should check out their [article about color blindness](#).

Dichromacy



Original Color

71.6473, 10.6752, 4.9645

Protanopia

71.7300, -2.1938, 2.4590

Deuteranopia

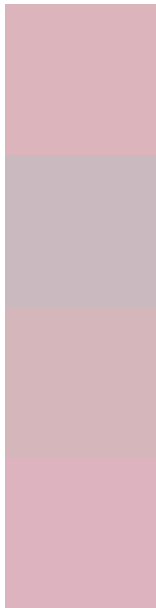
71.7106, 4.9505, 5.4037



Tritanopia

71.6283, 12.3626, 2.5919

Trichromacy



Original Color

71.6473, 10.6752, 4.9645

Protanomaly

71.7189, 2.2216, 3.4835

Deuteranomaly

71.8338, 6.8447, 5.5794

Tritanomaly

71.5664, 12.0372, 3.4745

Monochromacy



Original Color

71.6473, 10.6752, 4.9645

Achromatopsia

73.0258, -3.8965, 3.9676

Achromatomaly

72.3081, 1.1971, 4.1607

CSS Examples

Text

The CSS property to change the color of the text to HunterLab 71.6473, 10.6752, 4.9645 is called "color". The color property can be set on classes, ids or directly on the HTML element.

This example shows how text in the color `rgb(219, 180, 188)` looks like.

```
.text, #text, p{  
    color:rgb(219, 180, 188)  
}
```

If you want to add a text shadow in that color use the text-shadow property, you can generate a text shadow directly with our [CSS Text Shadow Generator](#).

Here you see how black text with a 4 pixel rgb(219, 180, 188) colored shadow looks like.

```
.shadow{ text-shadow: 4px 4px 2px rgb(219, 180, 188) }
```

Border

The CSS property to change the border of an element to HunterLab 71.6473, 10.6752, 4.9645 is called "border". The border property can be set on classes, ids or directly on the HTML element.

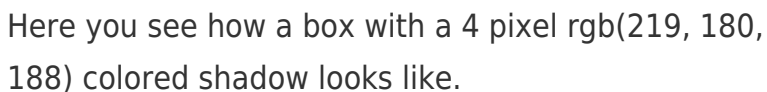
This example shows the color as border, it can be applied via the CSS property "border" or "border-color".

```
.border, #border, table{ border:4px solid rgb(219, 180, 188) }
```


If only the border color should be changed use the property `border-color`.

```
.border{ border-color:rgb(219, 180, 188) }
```

If you want to add a box shadow in that color use:



Here you see how a box with a 4 pixel `rgb(219, 180, 188)` colored shadow looks like.

```
.boxshadow{ -moz-box-shadow:4px 4px 4px 4px rgb(219, 180, 188); -webkit-box-shadow:4px 4px 4px 4px rgb(219, 180, 188); box-shadow:4px 4px 4px 4px rgb(219, 180, 188) }
```

Background

The CSS property to change the background color of an element to HunterLab 71.6473, 10.6752, 4.9645 is called "background". The background property can be set on classes, ids or directly on the HTML element.

```
.background, #background, body{  
background: rgb(219, 180, 188) }
```

If only the background color should be changed can be used:

```
.background{ background-color: rgb(219,  
180, 188) }
```

This example shows the color as background, it is applied via the CSS property "background".

To optimize and compress your CSS code, you can use our [online CSS compressor and optimizer](#) based on csstidy. If you want to create a linear or radial gradient as background or border, check our [CSS Gradient Generator](#).

Hey! You found this booklet interesting? Support Converting Colors with the new Membership Option!

The pro membership hides all ads, plus gives you double the colors in the color bucket, and more awesome pro features!

[Learn more, Memberships starting at \\$2.50/m!](#)

**Follow me
on Twitter!**

@ConvertingColor