

# Converting Colors

HunterLab(71.5267, 5.1686,  
17.2000)

Have a look what the booklet for  
HunterLab(71.5267, 5.1686,  
17.2000) contains.

<b>HunterLab(71.4035, 5.3198, 17.2316)</b> .....	3
<b><i>Conversions</i></b> .....	4
<b><i>Details</i></b> .....	6
<b><i>Harmonies</i></b> .....	12
<b><i>Previews</i></b> .....	24
<b><i>Color Blindness Simulation</i></b> .....	28
<b><i>CSS Examples</i></b> .....	31

# Color

**HunterLab(71.4035, 5.3198,  
17.2316)**

# Conversions

## Conversions Part 1

<b>Format</b>	<b>Color</b>
Hex	DBB69E
RGB	219, 182, 158
RGB Percent	86%, 71%, 62%
CMY	0.1412, 0.2863, 0.3804
CMYK	0.00, 0.17, 0.28, 0.14
HSL	24°, 46%, 74%
HSV	24°, 28%, 86%
XYZ	52.1129, 50.9846, 39.4422
YIQ	190.3270, 29.7560, 0.3800

# Conversions

## Conversions Part 2

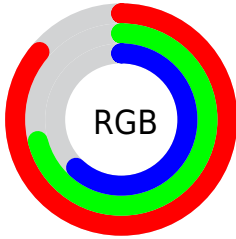
<b>Format</b>	<b>Color</b>
R <sub>Y</sub> B	219, 198, 158
Decimal	14399134
CIE Lab	76.67, 9.79, 17.21
CIE LCh	77, 19.798, 60.351
Yxy	50.9869, 0.3656, 0.3577
Android (android.graphics.Color)	4292589214 (0xFFDDBB69E)
YUV	190.3270, -15.9372, 25.1462
Hunter-Lab	71.4035, 5.3198, 17.2316

# Details

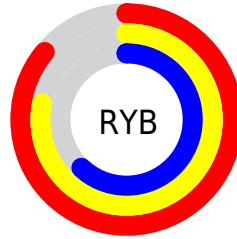
The HunterLab color **71.4035, 5.3198, 17.2316** is a light color, and the websafe version is hex **CC9999**. A complement of this color would be **71.7024, -9.9650, -11.4083**, and the grayscale version is **71.9534, -3.8393, 3.9094**.

A 20% lighter version of the original color is **93.3880, -3.2079, 17.5230**, and **49.5465, 5.5522, 13.9822** is the 20% darker color. If you saturate the color by 10%, you get **67.1668, 9.4930, 20.9596**, and if you desaturate by 10%, it is **75.8357, 1.5026, 13.0379**.

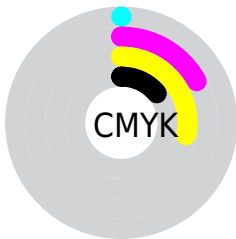
# Distribution



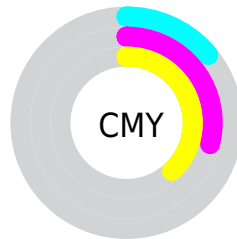
- Red (86%)
- Green (71%)
- Blue (62%)



- Red (86%)
- Yellow (78%)
- Blue (62%)



- Cyan (0%)
- Magenta (17%)
- Yellow (28%)
- Black (14%)



- Cyan (14%)
- Magenta (29%)
- Yellow (38%)


# Brightness & Saturation Gradients

These gradients show how the HunterLab color 71.4035, 5.3198, 17.2316 changes by changing the brightness by 10 percent. The first figure shows a shift by +10% for each color and the second figure -10%.


Similar to the brightness gradients but the following saturation gradients show a change of the HunterLab color 71.4035, 5.3198, 17.2316 by changing the saturation by 10% instead.



 71.4035, 5.3198,  
17.2316

 71.4035, 5.3198,  
17.2316


197.6140, 2.1122,  
30.5433

 60.1650, 5.4363,  
15.7109

 95.7264, 4.9121,  
20.2197

 49.5856, 5.4918,  
14.1585


 108.7493, 4.6349,  
21.6972

 39.7113, 5.4758,  
12.5616

122.3144, 4.3126,  
23.1696

 30.5965, 5.3777,  
10.8997

136.4008, 3.9481,  
24.6400

 22.3107, 5.1827,  
9.1406

150.9900, 3.5439,  
26.1109

 14.9472, 4.8690,  
7.2634

166.0652, 3.1019,

 8.5938, 4.5889,

27.5841

6.0157

181.6111, 2.6241,  
29.0611

0.0000, NaN, NaN

0.0000, NaN, NaN

■ 71.4035, 5.3198,  
17.2316

■ 71.4035, 5.3198,  
17.2316

■ 67.1668, 9.4930,  
20.9596

■ 75.8357, 1.5026,  
13.0379

■ 63.1423, 14.0483,  
24.1491

■ 80.4394, -1.9762,  
8.4368

■ 59.3562, 18.9892,  
26.7244

■ 85.1995, -5.1470,  
3.4816

■ 55.8352, 24.3012,  
28.6071

■ 90.1014, -8.0379,  
-1.7833

■ 52.6074, 29.9387,

■ 94.6946, -13.1077,

29.7276

-1.1147

■ 49.7010, 35.8122,  
30.0442

■ 96.8505, -16.4720,  
1.4734

■ 47.1385, 41.7657,  
29.6079

■ 46.6310, 43.0166,  
29.4869

# Harmonies

## Analogous

The Analogous color harmony consists of three colors that are next to each other on the color wheel.



71.4051, 12.4049, 12.0145



71.4035, 5.3198, 17.2316



71.4051, -3.9242, 18.9864

# Triad

The Triadic color harmony groups three colors that are evenly spaced from another and form a triangle on the color wheel.



71.4051, 5.3173, 17.2326



71.4051, -20.9487, 3.7817



71.4051, 5.5180, -12.5376

# Complementary

The Complementary color scheme is a pair of colors which are on the opposite of each other on the color wheel.



71.4035, 5.3198, 17.2316



71.7024, -9.9650, -11.4083

# Split Complementary

Split-complementary colors differ from the complementary color scheme. The scheme consists of three colors, the original color and two neighbors of the complement color.



71.4051, -3.7034, -15.4592



71.4035, 5.3198, 17.2316



71.4051, -18.7028, -5.3251

# Square

The Square scheme is like the rectangle color scheme, but the four colors are evenly spaced on the color wheel.



71.4051, 5.3173, 17.2326



71.4051, -18.8040, 11.8544



71.4051, -12.5080, -12.6664



71.4051, 12.5249, -5.1201



# Rectangle

The Rectangle color scheme consists of four colors that form a rectangle on the color wheel.



71.4035, 5.3198, 17.2316



71.4051, -9.9709, 18.1584



71.4051, -12.5080, -12.6664



71.4051, 2.5593, -14.1178

# Sweetspot

The Sweet Spot groups the original color and five complimentary colors.



71.4051, 5.3173, 17.2326



95.4535, -2.2630, 10.1464



65.9412, 23.6345, -5.7054



43.7717, -0.7675, 5.0905

0.0000, NaN, NaN



46.2646, -2.4686, 2.5136



# Same Dimension

The Same Dimension uses a secret algorithm to generate beautiful new colors.



71.4051, 5.3173, 17.2326



82.0752, 8.9566, 22.9531



80.3478, -9.7577, 25.4686



37.2665, -0.6769, 4.2965



36.1839, 32.3988, 22.8635



10.0656, 6.1401, 6.3099

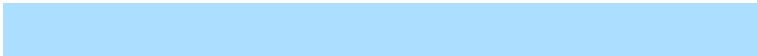


# Inverse Universe

The Inverse Universe completely reimagines the original color for something new.



71.7024, -9.9650, -11.4083



82.4881, -12.5637, -17.3924



62.7189, 5.1177, -24.6174



37.3158, -3.1532, -0.3418



36.2895, -1.2845, -42.5858



10.0960, -1.7101, -8.9275



# Previews

## White Background



This preview shows how the HunterLab color 71.4035, 5.3198, 17.2316 looks on a white background.

## Color Contrast Check

Large Text (above 18pt) WCAG AA × Fail

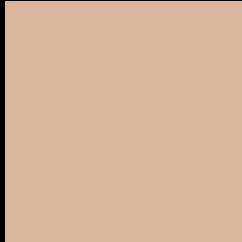
Any Text WCAG AA × Fail

Large Text (above 18pt) WCAG AAA × Fail

Any Text WCAG AAA × Fail



# Black Background



This preview shows how the HunterLab color 71.4035, 5.3198, 17.2316 looks on a black background.

## Color Contrast Check

Large Text (above 18pt) WCAG AA ✓ Pass

Any Text WCAG AA ✓ Pass

Large Text (above 18pt) WCAG AAA ✓ Pass

Any Text WCAG AAA ✓ Pass

If you want to check with other color combinations, try the [Color Contrast Checker](#).

# HunterLab 71.4035, 5.3198, 17.2316 Background



This preview shows how black text looks on a background with the HunterLab color 71.4035, 5.3198, 17.2316.



This preview shows how white text looks on a background with the HunterLab color 71.4035, 5.3198,



# Color Blindness Simulation

Color vision deficiency is a very complex topic, and I could not describe the different causes any better than Wikipedia does, so if you want to learn more, you should check out their [article about color blindness](#).

## Dichromacy



### Original Color

71.4035, 5.3198, 17.2316

### Protanopia

71.4916, -4.8052, 16.0052

### Deuteranopia

71.4035, 5.3198, 17.2316



## Tritanopia

71.3399, 14.1659, 3.2426

# Trichromacy



## Original Color

71.4035, 5.3198, 17.2316

## Protanomaly

71.2585, -1.0631, 16.2187

## Deuteranomaly

71.4035, 5.3198, 17.2316

## Tritanomaly

71.4314, 10.8877, 8.8075

# Monochromacy



## Original Color

71.4035, 5.3198, 17.2316

## Achromatopsia

71.7578, -3.8288, 3.8987

## Achromatomaly

71.5350, -0.6875, 9.1578

# CSS Examples

## Text

The CSS property to change the color of the text to HunterLab 71.4035, 5.3198, 17.2316 is called "color". The color property can be set on classes, ids or directly on the HTML element.

This example shows how text in the color `rgb(219, 182, 158)` looks like.

```
.text, #text, p{  
    color:rgb(219, 182, 158)  
}
```

If you want to add a text shadow in that color use the text-shadow property, you can generate a text shadow directly with our [CSS Text Shadow Generator](#).

Here you see how black text with a 4 pixel rgb(219, 182, 158) colored shadow looks like.

```
.shadow{ text-shadow: 4px 4px 2px rgb(219, 182, 158) }
```

## Border

The CSS property to change the border of an element to HunterLab 71.4035, 5.3198, 17.2316 is called "border". The border property can be set on classes, ids or directly on the HTML element.

This example shows the color as border, it can be applied via the CSS property "border" or "border-color".

```
.border, #border, table{ border:4px solid rgb(219, 182, 158) }
```



If only the border color should be changed use the property `border-color`.

```
.border{ border-color:rgb(219, 182, 158) }
```

If you want to add a box shadow in that color use:

Here you see how a box with a 4 pixel `rgb(219, 182, 158)` colored shadow looks like.

```
.boxshadow{ -moz-box-shadow:4px 4px 4px  
4px rgb(219, 182, 158); -webkit-box-  
shadow:4px 4px 4px 4px rgb(219, 182, 158);  
box-shadow:4px 4px 4px 4px rgb(219, 182,  
158) }
```

# Background

The CSS property to change the background color of an element to HunterLab 71.4035, 5.3198, 17.2316 is called "background". The background property can be set on classes, ids or directly on the HTML element.

```
.background, #background, body{  
background: rgb(219, 182, 158) }
```

If only the background color should be changed can be used:

```
.background{ background-color: rgb(219,  
182, 158) }
```

This example shows the color as background, it is applied via the CSS property "background".

To optimize and compress your CSS code, you can use our [online CSS compressor and optimizer](#) based on csstidy. If you want to create a linear or radial gradient as background or border, check our [CSS Gradient Generator](#).

Hey! You found this booklet interesting? Support Converting Colors with the new Membership Option!

The pro membership hides all ads, plus gives you double the colors in the color bucket, and more awesome pro features!

**[Learn more, Memberships starting at \\$2.50/m!](#)**

**Follow me  
on Twitter!**

@ConvertingColor