

Converting Colors

HunterLab(71.5866, 10.3234,
12.5498)

Have a look what the booklet for
HunterLab(71.5866, 10.3234,
12.5498) contains.

HunterLab(71.4337, 10.4551, 12.2219)	3
<i>Conversions</i>	4
<i>Details</i>	6
<i>Harmonies</i>	12
<i>Previews</i>	24
<i>Color Blindness Simulation</i>	28
<i>CSS Examples</i>	31

Color

**HunterLab(71.4337, 10.4551,
12.2219)**

Conversions

Conversions Part 1

Format	Color
Hex	E0B3AB
RGB	224, 179, 171
RGB Percent	88%, 70%, 67%
CMY	0.1216, 0.2980, 0.3294
CMYK	0.00, 0.20, 0.24, 0.12
HSL	9°, 46%, 77%
HSV	9°, 24%, 88%
XYZ	54.2112, 51.0277, 45.5201
YIQ	191.5430, 29.3880, 7.0520

Conversions

Conversions Part 2

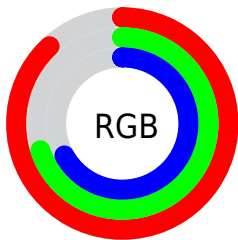
Format	Color
R _Y B	224, 180, 171
Decimal	14726059
CIE Lab	76.70, 15.10, 10.27
CIE LCh	77, 18.265, 34.230
Yxy	51.0301, 0.3596, 0.3385
Android (android.graphics.Color)	4292916139 (0xFFE0B3AB)
YUV	191.5430, -10.1277, 28.4648
Hunter-Lab	71.4337, 10.4551, 12.2219

Details

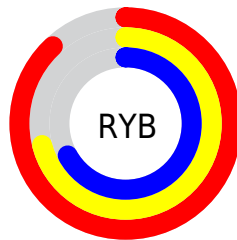
The HunterLab color $71.4337, 10.4551, 12.2219$ is a light color, and the websafe version is hex $CC9999$. A complement of this color would be $79.4667, -15.9641, -3.9283$, and the grayscale version is $72.4435, -3.8654, 3.9360$.

A 20% lighter version of the original color is $92.8265, 0.3802, 11.2492$, and $49.5767, 10.2346, 9.8559$ is the 20% darker color. If you saturate the color by 10%, you get $65.6827, 17.4094, 15.2622$, and if you desaturate by 10%, it is $77.5332, 3.8562, 9.0825$.

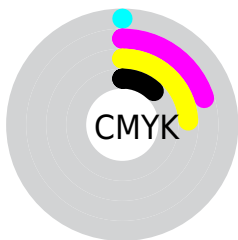
Distribution



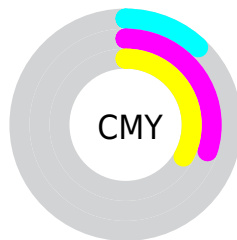
- Red (88%)
- Green (70%)
- Blue (67%)



- Red (88%)
- Yellow (71%)
- Blue (67%)



- Cyan (0%)
- Magenta (20%)
- Yellow (24%)
- Black (12%)




- Cyan (12%)
- Magenta (30%)
- Yellow (33%)

Brightness & Saturation Gradients


These gradients show how the HunterLab color 71.4337, 10.4551, 12.2219 changes by changing the brightness by 10 percent. The first figure shows a shift by +10% for each color and the second figure -10%.


Similar to the brightness gradients but the following saturation gradients show a change of the HunterLab color 71.4337, 10.4551, 12.2219 by changing the saturation by 10% instead.


 71.4337, 10.4551,
12.2219

 71.4337, 10.4551,
12.2219


197.6564, 9.1076,
22.8425

 60.1935, 10.3223,
11.0864


 95.7597, 10.5135,
14.5098

 49.6123, 10.1157,
9.9490


108.7840, 10.4556,
15.6651

 39.7361, 9.8226,
8.8044


122.3505, 10.3449,
16.8306

 30.6193, 9.4300,
7.6429

136.4383, 10.1848,
18.0074

 22.3312, 8.9200,
6.4486

151.0288, 9.9785,
19.1965

 14.9651, 8.2680,
5.1927

166.1052, 9.7287,

 8.6106, 7.6359,

20.3984

5.4149

181.6524, 9.4378,
21.6136

0.0000, INF, NaN

0.0000, NaN, NaN

■ 71.4337, 10.4551,
12.2219

■ 71.4337, 10.4551,
12.2219

■ 65.6827, 17.4094,
15.2622

■ 77.5332, 3.8562,
9.0825

■ 60.3326, 24.7150,
18.1449

■ 83.9292, -2.3974,
5.8762

■ 55.4533, 32.3032,
20.7893

■ 90.5846, -8.3398,
2.6264

■ 51.1229, 40.0199,
23.0824

■ 97.2560, -15.0171,
1.9903

■ 47.4251, 47.5889,

24.8833

■ 44.4387, 54.5972,
26.0471

■ 42.2194, 60.5377,
26.4816

■ 41.2089, 63.4968,
26.5043

Harmonies

Analogous

The Analogous color harmony consists of three colors that are next to each other on the color wheel.



71.4353, 13.5276, 5.0450



71.4337, 10.4551, 12.2219



71.4353, 3.5552, 16.7120

Triad

The Triadic color harmony groups three colors that are evenly spaced from another and form a triangle on the color wheel.



71.4353, 10.4526, 12.2230



71.4353, -18.1758, 10.4265



71.4353, -2.5852, -13.7452

Complementary

The Complementary color scheme is a pair of colors which are on the opposite of each other on the color wheel.



71.4337, 10.4551, 12.2219



79.4667, -15.9641, -3.9283

Split Complementary

Split-complementary colors differ from the complementary color scheme. The scheme consists of three colors, the original color and two neighbors of the complement color.



71.4353, -10.8989, -11.8661



71.4337, 10.4551, 12.2219



71.4353, -19.6471, 2.7122

Square

The Square scheme is like the rectangle color scheme, but the four colors are evenly spaced on the color wheel.



71.4353, 10.4526, 12.2230



71.4353, -12.9268, 15.7646



71.4353, -17.0446, -5.5898



71.4353, 5.7768, -10.4581

Rectangle

The Rectangle color scheme consists of four colors that form a rectangle on the color wheel.



71.4337, 10.4551, 12.2219



71.4353, -2.1368, 17.8986



71.4353, -17.0446, -5.5898



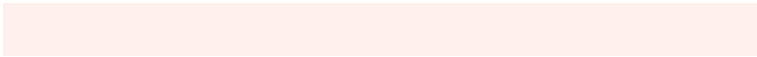
71.4353, -5.4787, -13.6992

Sweetspot

The Sweet Spot groups the original color and five complimentary colors.



71.4353, 10.4526, 12.2230



94.6640, -0.3636, 8.0718



70.6641, 22.1026, -10.6078



43.5863, 0.0341, 3.8391

0.0000, NaN, NaN



46.2646, -2.4686, 2.5136

Same Dimension

The Same Dimension uses a secret algorithm to generate beautiful new colors.



71.4353, 10.4526, 12.2230



79.6608, 15.7143, 15.7739



79.1620, -3.1722, 19.8669



37.4606, 0.5513, 3.6144



31.6049, 47.9082, 20.3135



8.9343, 10.7310, 5.6932

Inverse Universe

The Inverse Universe completely reimagines the original color for something new.



79.4667, -15.9641, -3.9283



90.6603, -20.5627, -6.3671



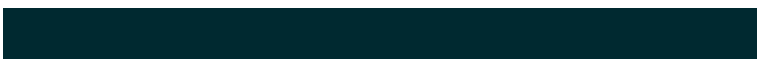
71.1847, -2.7914, -14.9227



38.9886, -4.4503, 0.5466



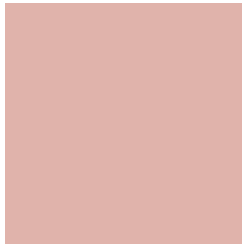
49.7462, -20.1765, -18.6233



13.4618, -5.7852, -4.3375

Previews

White Background



This preview shows how the HunterLab color 71.4337, 10.4551, 12.2219 looks on a white background.

Color Contrast Check

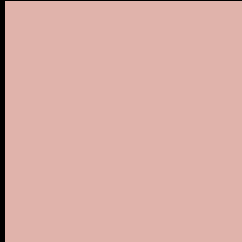
Large Text (above 18pt) WCAG AA × Fail

Any Text WCAG AA × Fail

Large Text (above 18pt) WCAG AAA × Fail

Any Text WCAG AAA × Fail

Black Background



This preview shows how the HunterLab color 71.4337, 10.4551, 12.2219 looks on a black background.

Color Contrast Check

Large Text (above 18pt) WCAG AA ✓ Pass

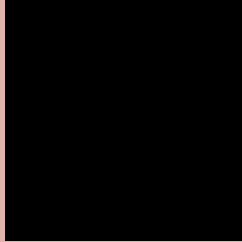
Any Text WCAG AA ✓ Pass

Large Text (above 18pt) WCAG AAA ✓ Pass

Any Text WCAG AAA ✓ Pass

If you want to check with other color combinations, try the [Color Contrast Checker](#).

HunterLab 71.4337, 10.4551, 12.2219 Background



This preview shows how black text looks on a background with the HunterLab color 71.4337, 10.4551, 12.2219.



This preview shows how white text looks on a background with the HunterLab color 71.4337, 10.4551,

Color Blindness Simulation

Color vision deficiency is a very complex topic, and I could not describe the different causes any better than Wikipedia does, so if you want to learn more, you should check out their [article about color blindness](#).

Dichromacy



Original Color

71.4337, 10.4551, 12.2219

Protanopia

71.6000, -3.6431, 10.0433

Deuteranopia

71.5656, 4.9920, 12.6788



Tritanopia

71.3702, 15.6197, 3.7819

Trichromacy



Original Color

71.4337, 10.4551, 12.2219

Protanomaly

71.3272, 1.4124, 10.6897

Deuteranomaly

71.5986, 6.5783, 12.7415

Tritanomaly

71.3237, 13.6332, 6.9469

Monochromacy



Original Color

71.4337, 10.4551, 12.2219

Achromatopsia

72.6027, -3.8739, 3.9446

Achromatomaly

71.9991, 1.2436, 7.0445

CSS Examples

Text

The CSS property to change the color of the text to HunterLab 71.4337, 10.4551, 12.2219 is called "color". The color property can be set on classes, ids or directly on the HTML element.

This example shows how text in the color `rgb(224, 179, 171)` looks like.

```
.text, #text, p{  
    color:rgb(224, 179, 171)  
}
```

If you want to add a text shadow in that color use the text-shadow property, you can generate a text shadow directly with our [CSS Text Shadow Generator](#).

Here you see how black text with a 4 pixel rgb(224, 179, 171) colored shadow looks like.

```
.shadow{ text-shadow: 4px 4px 2px rgb(224, 179, 171) }
```

Border

The CSS property to change the border of an element to HunterLab 71.4337, 10.4551, 12.2219 is called "border". The border property can be set on classes, ids or directly on the HTML element.

This example shows the color as border, it can be applied via the CSS property "border" or "border-color".

```
.border, #border, table{ border:4px solid rgb(224, 179, 171) }
```


If only the border color should be changed use the property `border-color`.

```
.border{ border-color:rgb(224, 179, 171) }
```

If you want to add a box shadow in that color use:

Here you see how a box with a 4 pixel `rgb(224, 179, 171)` colored shadow looks like.

```
.boxshadow{ -moz-box-shadow:4px 4px 4px  
4px rgb(224, 179, 171); -webkit-box-  
shadow:4px 4px 4px 4px rgb(224, 179, 171);  
box-shadow:4px 4px 4px 4px rgb(224, 179,  
171) }
```

Background

The CSS property to change the background color of an element to HunterLab 71.4337, 10.4551, 12.2219 is called "background". The background property can be set on classes, ids or directly on the HTML element.

```
.background, #background, body{  
background: rgb(224, 179, 171) }
```

If only the background color should be changed can be used:

```
.background{ background-color: rgb(224,  
179, 171) }
```

This example shows the color as background, it is applied via the CSS property "background".

To optimize and compress your CSS code, you can use our [online CSS compressor and optimizer](#) based on csstidy. If you want to create a linear or radial gradient as background or border, check our [CSS Gradient Generator](#).

Hey! You found this booklet interesting? Support Converting Colors with the new Membership Option!

The pro membership hides all ads, plus gives you double the colors in the color bucket, and more awesome pro features!

[Learn more, Memberships starting at \\$2.50/m!](#)

**Follow me
on Twitter!**

@ConvertingColor