

Converting Colors

HunterLab(71.6116, 2.5439,
9.7331)

Have a look what the booklet for
HunterLab(71.6116, 2.5439, 9.7331)
contains.

HunterLab(71.6116, 2.5439, 9.7331)	3
<i>Conversions</i>	4
<i>Details</i>	6
<i>Harmonies</i>	12
<i>Previews</i>	24
<i>Color Blindness Simulation</i>	28
<i>CSS Examples</i>	31

Color

**HunterLab(71.6116, 2.5439,
9.7331)**

Conversions

Conversions Part 1

Format	Color
Hex	D0B9B1
RGB	208, 185, 177
RGB Percent	82%, 73%, 69%
CMY	0.1843, 0.2745, 0.3059
CMYK	0.00, 0.11, 0.15, 0.18
HSL	15°, 25%, 75%
HSV	15°, 15%, 82%
XYZ	51.2973, 51.2822, 48.7899
YIQ	190.9650, 16.2760, 2.3880

Conversions

Conversions Part 2

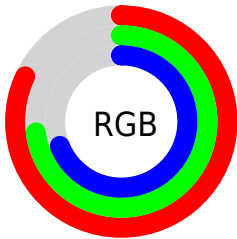
Format	Color
RYB	208, 188, 177
Decimal	13679025
CIELab	76.85, 6.87, 7.04
CIELCh	77, 9.839, 45.698
Yxy	51.2845, 0.3389, 0.3388
Android (android.graphics.Color)	4291869105 (0xFFD0B9B1)
YUV	190.9650, -6.8847, 14.9397
Hunter-Lab	71.6116, 2.5439, 9.7331

Details

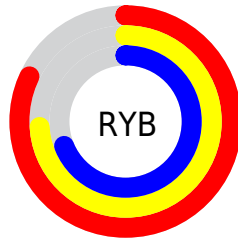
The HunterLab color $71.6116, 2.5439, 9.7331$ is a light color, and the websafe version is hex `CCCCCC`. A complement of this color would be $74.3025, -9.5022, -1.9994$, and the grayscale version is $72.1899, -3.8519, 3.9222$.

A 20% lighter version of the original color is $94.8967, -1.6642, 10.2806$, and $49.7293, 2.8036, 7.9572$ is the 20% darker color. If you saturate the color by 10%, you get $66.6391, 7.4701, 13.1300$, and if you desaturate by 10%, it is $76.8039, -2.0773, 6.1393$.

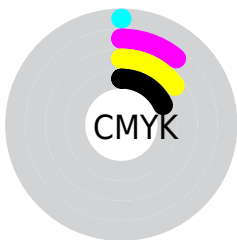
Distribution



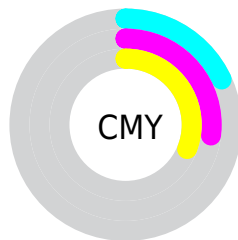
- Red (82%)
- Green (73%)
- Blue (69%)



- Red (82%)
- Yellow (74%)
- Blue (69%)



- Cyan (0%)
- Magenta (11%)
- Yellow (15%)
- Black (18%)



- Cyan (18%)
- Magenta (27%)
- Yellow (31%)

Brightness & Saturation Gradients

These gradients show how the HunterLab color 71.6116, 2.5439, 9.7331 changes by changing the brightness by 10 percent. The first figure shows a shift by +10% for each color and the second figure -10%.

Similar to the brightness gradients but the following saturation gradients show a change of the HunterLab color 71.6116, 2.5439, 9.7331 by changing the saturation by 10% instead.

■ 71.6116, 2.5439,
9.7331

■ 71.6116, 2.5439,
9.7331

197.9061, -1.7108,
19.1437

■ 60.3615, 2.8025,
8.7689

■ 95.9558, 1.8727,
11.7082

■ 49.7699, 3.0077,
7.8155

108.9886, 1.4717,
12.7190

■ 39.8824, 3.1508,
6.8710

122.5633, 1.0303,
13.7466

■ 30.7534, 3.2231,
5.9301

136.6589, 0.5508,
14.7913

■ 22.4520, 3.2127,
4.9840

151.2570, 0.0353,
15.8533

■ 15.0708, 3.1014,
4.0166

166.3408, -0.5144,

■ 8.7089, 2.9911,

16.9327

3.8256

181.8951, -1.0969,
18.0295

0.0000, NaN, NaN

0.0000, NaN, NaN

■ 71.6116, 2.5439,
9.7331

■ 71.6116, 2.5439,
9.7331

■ 66.6391, 7.4701,
13.1300

■ 76.8039, -2.0773,
6.1393

■ 61.9112, 12.7304,
16.2789

■ 82.1863, -6.4155,
2.3813

■ 57.4646, 18.3317,
19.1192

■ 87.7397, -10.5030,
-1.5122

■ 53.3401, 24.2580,
21.5736

■ 93.2646, -15.3845,
-2.9439

■ 49.5842, 30.4513,

■ 95.9948, -19.5626,

23.5493

0.3758

■ 46.2474, 36.7920,
24.9460

■ 43.3802, 43.0798,
25.6750

■ 41.0264, 49.0270,
25.6983

■ 40.0260, 51.7820,
25.5704

Harmonies

Analogous

The Analogous color harmony consists of three colors that are next to each other on the color wheel.



71.6132, 5.0075, 6.1663



71.6116, 2.5439, 9.7331



71.6132, -1.5979, 11.6760

Triad

The Triadic color harmony groups three colors that are evenly spaced from another and form a triangle on the color wheel.



71.6132, 2.5418, 9.7342



71.6132, -12.3029, 5.9720



71.6132, -1.3842, -4.8033

Complementary

The Complementary color scheme is a pair of colors which are on the opposite of each other on the color wheel.



71.6116, 2.5439, 9.7331



74.3025, -9.5022, -1.9994

Split Complementary

Split-complementary colors differ from the complementary color scheme. The scheme consists of three colors, the original color and two neighbors of the complement color.



71.6132, -6.0251, -4.8636



71.6116, 2.5439, 9.7331



71.6132, -12.2490, 1.5531

Square

The Square scheme is like the rectangle color scheme, but the four colors are evenly spaced on the color wheel.



71.6132, 2.5418, 9.7342



71.6132, -10.1258, 9.5998



71.6132, -9.9767, -2.4747



71.6132, 2.7016, -2.3148

Rectangle

The Rectangle color scheme consists of four colors that form a rectangle on the color wheel.



71.6116, 2.5439, 9.7331



71.6132, -4.7125, 11.8720



71.6132, -9.9767, -2.4747



71.6132, -2.9331, -5.1133

Sweetspot

The Sweet Spot groups the original color and five complimentary colors.



71.6132, 2.5418, 9.7342



97.2766, -3.0965, 7.3324



70.0263, 10.4880, -3.0626



44.7696, -1.2348, 3.5559

0.0000, NaN, NaN



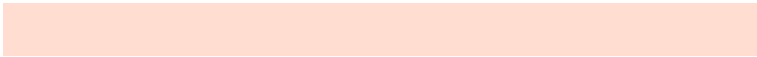
46.2646, -2.4686, 2.5136

Same Dimension

The Same Dimension uses a secret algorithm to generate beautiful new colors.



71.6132, 2.5418, 9.7342



88.0655, 5.2088, 13.7016



76.1638, -5.1813, 14.4607



35.0676, -0.0148, 3.6661



31.8099, 40.2486, 20.3057



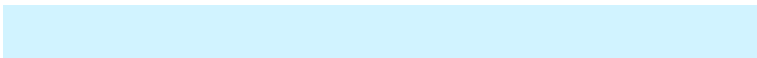
8.3433, 7.2406, 5.2679

Inverse Universe

The Inverse Universe completely reimagines the original color for something new.



74.3025, -9.5022, -1.9994



92.1848, -13.2562, -4.2766



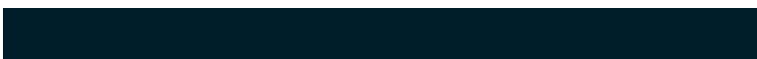
69.6386, -1.8722, -7.9288



35.8731, -3.6185, 0.1528



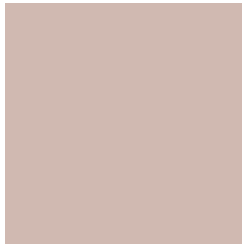
41.7933, -11.5925, -27.2131



10.4917, -3.5965, -5.3499

Previews

White Background



This preview shows how the HunterLab color 71.6116, 2.5439, 9.7331 looks on a white background.

Color Contrast Check

Large Text (above 18pt) WCAG AA × Fail

Any Text WCAG AA × Fail

Large Text (above 18pt) WCAG AAA × Fail

Any Text WCAG AAA × Fail

Black Background



This preview shows how the HunterLab color 71.6116, 2.5439, 9.7331 looks on a black background.

Color Contrast Check

Large Text (above 18pt) WCAG AA ✓ Pass

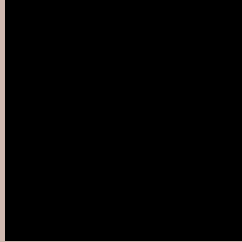
Any Text WCAG AA ✓ Pass

Large Text (above 18pt) WCAG AAA ✓ Pass

Any Text WCAG AAA ✓ Pass

If you want to check with other color combinations, try the [Color Contrast Checker](#).

HunterLab 71.6116, 2.5439, 9.7331 Background



This preview shows how black text looks on a background with the HunterLab color 71.6116, 2.5439, 9.7331.



This preview shows how white text looks on a background with the HunterLab color 71.6116, 2.5439,

Color Blindness Simulation

Color vision deficiency is a very complex topic, and I could not describe the different causes any better than Wikipedia does, so if you want to learn more, you should check out their [article about color blindness](#).

Dichromacy



Original Color

71.6116, 2.5439, 9.7331

Protanopia

71.6838, -3.1844, 8.8412

Deuteranopia

71.5454, 5.3045, 9.7089



Tritanopia

71.6172, 8.1530, 1.0376

Trichromacy



Original Color

71.6116, 2.5439, 9.7331

Protanomaly

71.7357, -1.5244, 9.3645

Deuteranomaly

71.6269, 4.0921, 9.7771

Tritanomaly

71.5840, 6.1321, 4.3414

Monochromacy



Original Color

71.6116, 2.5439, 9.7331

Achromatopsia

72.1800, -3.8513, 3.9217

Achromatomaly

71.9796, -1.7565, 6.0581

CSS Examples

Text

The CSS property to change the color of the text to HunterLab 71.6116, 2.5439, 9.7331 is called "color". The color property can be set on classes, ids or directly on the HTML element.

This example shows how text in the color `rgb(208, 185, 177)` looks like.

```
.text, #text, p{  
    color:rgb(208, 185, 177)  
}
```

If you want to add a text shadow in that color use the text-shadow property, you can generate a text shadow directly with our [CSS Text Shadow Generator](#).

Here you see how black text with a 4 pixel rgb(208, 185, 177) colored shadow looks like.

```
.shadow{ text-shadow: 4px 4px 2px rgb(208, 185, 177) }
```

Border

The CSS property to change the border of an element to HunterLab 71.6116, 2.5439, 9.7331 is called "border". The border property can be set on classes, ids or directly on the HTML element.

This example shows the color as border, it can be applied via the CSS property "border" or "border-color".

```
.border, #border, table{ border:4px solid rgb(208, 185, 177) }
```


If only the border color should be changed use the property border-color.

```
.border{ border-color:rgb(208, 185, 177) }
```

If you want to add a box shadow in that color use:

Here you see how a box with a 4 pixel rgb(208, 185, 177) colored shadow looks like.

```
.boxshadow{ -moz-box-shadow:4px 4px 4px  
4px rgb(208, 185, 177); -webkit-box-  
shadow:4px 4px 4px 4px rgb(208, 185, 177);  
box-shadow:4px 4px 4px 4px rgb(208, 185,  
177) }
```

Background

The CSS property to change the background color of an element to HunterLab 71.6116, 2.5439, 9.7331 is called "background". The background property can be set on classes, ids or directly on the HTML element.

```
.background, #background, body{  
background: rgb(208, 185, 177) }
```

If only the background color should be changed can be used:

```
.background{ background-color: rgb(208,  
185, 177) }
```

This example shows the color as background, it is applied via the CSS property "background".

To optimize and compress your CSS code, you can use our [online CSS compressor and optimizer](#) based on csstidy. If you want to create a linear or radial gradient as background or border, check our [CSS Gradient Generator](#).

Hey! You found this booklet interesting? Support Converting Colors with the new Membership Option!

The pro membership hides all ads, plus gives you double the colors in the color bucket, and more awesome pro features!

[Learn more, Memberships starting at \\$2.50/m!](#)

**Follow me
on Twitter!**

@ConvertingColor