

# Converting Colors

HunterLab(71.6707, 6.9543,  
7.4882)

Have a look what the booklet for  
HunterLab(71.6707, 6.9543, 7.4882)  
contains.

<b>HunterLab(71.5049, 6.9301, 7.4864)</b> .....	3
<i><b>Conversions</b></i> .....	4
<i><b>Details</b></i> .....	6
<i><b>Harmonies</b></i> .....	12
<i><b>Previews</b></i> .....	24
<i><b>Color Blindness Simulation</b></i> .....	28
<i><b>CSS Examples</b></i> .....	31

# Color

**HunterLab(71.5049, 6.9301,  
7.4864)**

# Conversions

## Conversions Part 1

Format	Color
Hex	D6B6B6
RGB	214, 182, 182
RGB Percent	84%, 71%, 71%
CMY	0.1608, 0.2863, 0.2863
CMYK	0.00, 0.15, 0.15, 0.16
HSL	0°, 28%, 78%
HSV	0°, 15%, 84%
XYZ	52.9031, 51.1295, 51.3367
YIQ	191.5680, 19.0720, 6.7840

# Conversions

## Conversions Part 2

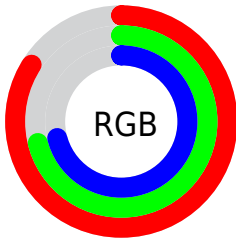
<b>Format</b>	<b>Color</b>
R <sub>Y</sub> B	214, 182, 182
Decimal	14071478
CIE Lab	76.76, 11.47, 4.26
CIE LCh	77, 12.241, 20.389
Yxy	51.1318, 0.3405, 0.3291
Android (android.graphics.Color)	4292261558 (0xFFD6B6B6)
YUV	191.5680, -4.7170, 19.6729
Hunter-Lab	71.5049, 6.9301, 7.4864

# Details

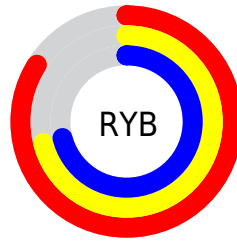
The HunterLab color  $71.5049, 6.9301, 7.4864$  is a light color, and the websafe version is hex  $\text{FFCCCC}$ . A complement of this color would be  $79.3044, -13.9180, 1.0602$ , and the grayscale version is  $72.4351, -3.8650, 3.9355$ .

A 20% lighter version of the original color is  $94.1181, 0.7623, 7.0522$ , and  $49.6552, 6.9660, 5.9205$  is the 20% darker color. If you saturate the color by 10%, you get  $64.9679, 14.9065, 9.6905$ , and if you desaturate by 10%, it is  $78.4408, -0.7116, 5.4267$ .

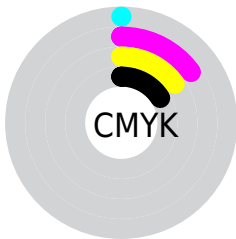
# Distribution



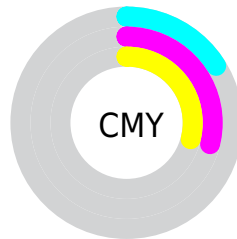
- Red (84%)
- Green (71%)
- Blue (71%)



- Red (84%)
- Yellow (71%)
- Blue (71%)



- Cyan (0%)
- Magenta (15%)
- Yellow (15%)
- Black (16%)




- Cyan (16%)
- Magenta (29%)
- Yellow (29%)


# Brightness & Saturation Gradients

These gradients show how the HunterLab color 71.5049, 6.9301, 7.4864 changes by changing the brightness by 10 percent. The first figure shows a shift by +10% for each color and the second figure -10%.


Similar to the brightness gradients but the following saturation gradients show a change of the HunterLab color 71.5049, 6.9301, 7.4864 by changing the saturation by 10% instead.





 71.5049, 6.9301,  
7.4864

 71.5049, 6.9301,  
7.4864

197.7563, 4.3127,  
15.8781

 60.2607, 6.9676,  
6.6651


 95.8382, 6.6708,  
9.1997

 49.6754, 6.9396,  
5.8647


108.8659, 6.4631,  
10.0891

 39.7947, 6.8352,  
5.0856

122.4356, 6.2080,  
11.0006

 30.6729, 6.6428,  
4.3261

136.5266, 5.9083,  
11.9339

 22.3795, 6.3466,  
3.5832

151.1201, 5.5668,  
12.8886

 15.0074, 5.9234,  
2.8499

166.1995, 5.1857,

 8.6501, 5.5041,

13.8644

2.5145

181.7495, 4.7671,  
14.8611

0.0000, NaN, NaN

0.0000, NaN, NaN

■ 71.5049, 6.9301,  
7.4864

■ 71.5049, 6.9301,  
7.4864

■ 64.9679, 14.9065,  
9.6905

■ 78.4408, -0.7116,  
5.4267

■ 58.9003, 23.2068,  
12.0350

■ 85.7112, -8.0327,  
3.4968

■ 53.3970, 31.7344,  
14.4962

■ 93.2707, -15.0716,  
1.6821

■ 48.5695, 40.2616,  
17.0058

■ 96.4553, -17.8957,  
0.9677

■ 44.5409, 48.3682,

19.4316

■ 41.4271, 55.4297,  
21.5728

■ 39.3023, 60.7407,  
23.1982

■ 38.1515, 63.8122,  
24.1432

■ 37.8112, 64.7489,  
24.4326

# Harmonies

## Analogous

The Analogous color harmony consists of three colors that are next to each other on the color wheel.



71.5065, 7.5020, 2.0999



71.5049, 6.9301, 7.4864



71.5065, 3.4245, 11.5862

# Triad

The Triadic color harmony groups three colors that are evenly spaced from another and form a triangle on the color wheel.



71.5065, 6.9279, 7.4876



71.5065, -12.2026, 10.3259



71.5065, -5.6700, -7.3671

# Complementary

The Complementary color scheme is a pair of colors which are on the opposite of each other on the color wheel.



71.5049, 6.9301, 7.4864



79.3044, -13.9180, 1.0602

# Split Complementary

Split-complementary colors differ from the complementary color scheme. The scheme consists of three colors, the original color and two neighbors of the complement color.



71.5065, -10.7857, -4.7646



71.5049, 6.9301, 7.4864



71.5065, -14.4772, 5.6394

# Square

The Square scheme is like the rectangle color scheme, but the four colors are evenly spaced on the color wheel.



71.5065, 6.9279, 7.4876



71.5065, -7.6600, 13.1321



71.5065, -13.9669, 0.1001



71.5065, 0.1044, -6.7731



# Rectangle

The Rectangle color scheme consists of four colors that form a rectangle on the color wheel.



71.5049, 6.9301, 7.4864



71.5065, -0.0409, 13.1745



71.5065, -13.9669, 0.1001



71.5065, -7.5207, -6.8297

# Sweetspot

The Sweet Spot groups the original color and five complimentary colors.



71.5065, 6.9279, 7.4876



96.4495, -1.6985, 6.3965



72.5312, 12.3579, -7.0950



44.3164, -0.4661, 3.0444

0.0000, NaN, NaN



46.2646, -2.4686, 2.5136



# Same Dimension

The Same Dimension uses a secret algorithm to generate beautiful new colors.



71.5065, 6.9279, 7.4876



84.5702, 11.5424, 9.9784



76.1987, -1.2981, 12.4945



35.2435, 1.2455, 2.9631



29.3965, 50.3384, 18.9953



7.2201, 12.3606, 4.6654

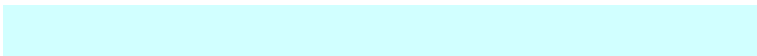


# Inverse Universe

The Inverse Universe completely reimagines the original color for something new.



79.3044, -13.9180, 1.0602



96.0762, -19.2578, 0.4807



74.2893, -5.9663, -5.1018



37.5601, -4.9372, 1.0571



56.5648, -29.9833, -5.9757

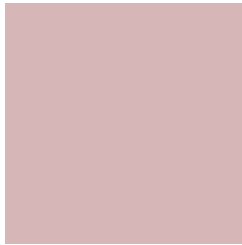


13.8922, -7.3640, -1.4672



# Previews

## White Background



This preview shows how the HunterLab color 71.5049, 6.9301, 7.4864 looks on a white background.

## Color Contrast Check

Large Text (above 18pt) WCAG AA × Fail

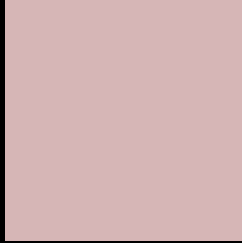
Any Text WCAG AA × Fail

Large Text (above 18pt) WCAG AAA × Fail

Any Text WCAG AAA × Fail



# Black Background



This preview shows how the HunterLab color 71.5049, 6.9301, 7.4864 looks on a black background.

## Color Contrast Check

Large Text (above 18pt) WCAG AA ✓ Pass

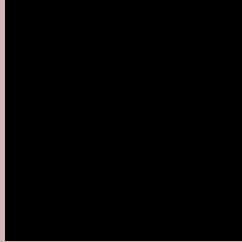
Any Text WCAG AA ✓ Pass

Large Text (above 18pt) WCAG AAA ✓ Pass

Any Text WCAG AAA ✓ Pass

If you want to check with other color combinations, try the [Color Contrast Checker](#).

## HunterLab 71.5049, 6.9301, 7.4864 Background



This preview shows how black text looks on a background with the HunterLab color 71.5049, 6.9301, 7.4864.



This preview shows how white text looks on a background with the HunterLab color 71.5049, 6.9301,

7.4864.

# Color Blindness Simulation

Color vision deficiency is a very complex topic, and I could not describe the different causes any better than Wikipedia does, so if you want to learn more, you should check out their [article about color blindness](#).

## Dichromacy



### Original Color

71.5049, 6.9301, 7.4864

### Protanopia

71.7006, -2.7211, 5.7203

### Deuteranopia

71.4795, 5.3678, 7.4304



## Tritanopia

71.5098, 10.5936, 1.9322

# Trichromacy



## Original Color

71.5049, 6.9301, 7.4864

## Protanomaly

71.4410, 0.9142, 5.9453

## Deuteranomaly

71.5831, 5.7145, 7.5534

## Tritanomaly

71.5629, 9.0646, 3.8948

# Monochromacy



## Original Color

71.5049, 6.9301, 7.4864

## Achromatopsia

72.6027, -3.8739, 3.9446

## Achromatomaly

72.0254, 0.0503, 5.2182

# CSS Examples

## Text

The CSS property to change the color of the text to HunterLab 71.5049, 6.9301, 7.4864 is called "color". The color property can be set on classes, ids or directly on the HTML element.

This example shows how text in the color `rgb(214, 182, 182)` looks like.

```
.text, #text, p{  
    color:rgb(214, 182, 182)  
}
```

If you want to add a text shadow in that color use the text-shadow property, you can generate a text shadow directly with our [CSS Text Shadow Generator](#).

Here you see how black text with a 4 pixel rgb(214, 182, 182) colored shadow looks like.

```
.shadow{ text-shadow: 4px 4px 2px rgb(214, 182, 182) }
```

## Border

The CSS property to change the border of an element to HunterLab 71.5049, 6.9301, 7.4864 is called "border". The border property can be set on classes, ids or directly on the HTML element.

This example shows the color as border, it can be applied via the CSS property "border" or "border-color".

```
.border, #border, table{ border:4px solid rgb(214, 182, 182) }
```



If only the border color should be changed use the property `border-color`.

```
.border{ border-color:rgb(214, 182, 182) }
```

If you want to add a box shadow in that color use:

Here you see how a box with a 4 pixel `rgb(214, 182, 182)` colored shadow looks like.

```
.boxshadow{ -moz-box-shadow:4px 4px 4px  
4px rgb(214, 182, 182); -webkit-box-  
shadow:4px 4px 4px 4px rgb(214, 182, 182);  
box-shadow:4px 4px 4px 4px rgb(214, 182,  
182) }
```

# Background

The CSS property to change the background color of an element to HunterLab 71.5049, 6.9301, 7.4864 is called "background". The background property can be set on classes, ids or directly on the HTML element.

```
.background, #background, body{  
background: rgb(214, 182, 182) }
```

If only the background color should be changed can be used:

```
.background{ background-color: rgb(214,  
182, 182) }
```

This example shows the color as background, it is applied via the CSS property "background".

To optimize and compress your CSS code, you can use our [online CSS compressor and optimizer](#) based on csstidy. If you want to create a linear or radial gradient as background or border, check our [CSS Gradient Generator](#).

Hey! You found this booklet interesting? Support Converting Colors with the new Membership Option!

The pro membership hides all ads, plus gives you double the colors in the color bucket, and more awesome pro features!

**[Learn more, Memberships starting at \\$2.50/m!](#)**

**Follow me  
on Twitter!**

@ConvertingColor