

Converting Colors

HunterLab(71.6845, 5.6578,
1.1810)

Have a look what the booklet for
HunterLab(71.6845, 5.6578, 1.1810)
contains.

HunterLab(71.7857, 5.7563, 1.2010)	3
<i>Conversions</i>	4
<i>Details</i>	6
<i>Harmonies</i>	12
<i>Previews</i>	24
<i>Color Blindness Simulation</i>	28
<i>CSS Examples</i>	31

Color

**HunterLab(71.7857, 5.7563,
1.2010)**

Conversions

Conversions Part 1

Format	Color
Hex	CFB8C4
RGB	207, 184, 196
RGB Percent	81%, 72%, 77%
CMY	0.1882, 0.2784, 0.2314
CMYK	0.00, 0.11, 0.05, 0.19
HSL	329°, 19%, 77%
HSV	329°, 11%, 81%
XYZ	52.8364, 51.5319, 59.3863
YIQ	192.2450, 9.8560, 8.6080

Conversions

Conversions Part 2

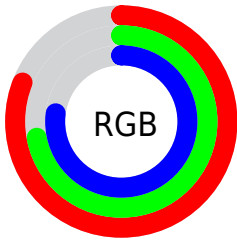
Format	Color
R _Y B	207, 184, 196
Decimal	13613252
CIE Lab	77.00, 10.26, -3.06
CIE LCh	77, 10.702, 343.379
Yxy	51.5341, 0.3227, 0.3147
Android (android.graphics.Color)	4291803332 (0xFFCFB8C4)
YUV	192.2450, 1.8512, 12.9401
Hunter-Lab	71.7857, 5.7563, 1.2010

Details

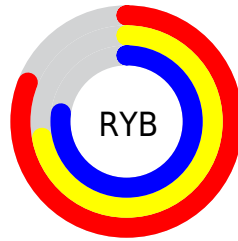
The HunterLab color $71.7857, 5.7563, 1.2010$ is a light color, and the websafe version is hex `CCCCCC`. A complement of this color would be $76.6534, -13.2107, 7.0653$, and the grayscale version is $72.6971, -3.8789, 3.9498$.

A 20% lighter version of the original color is $95.2219, 2.3162, 0.8538$, and $49.9579, 5.9567, 0.5165$ is the 20% darker color. If you saturate the color by 10%, you get $65.6641, 14.9105, -1.2722$, and if you desaturate by 10%, it is $78.2551, -3.2297, 3.9697$.

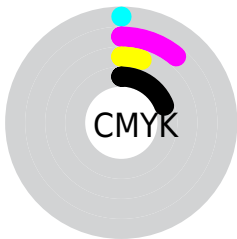
Distribution



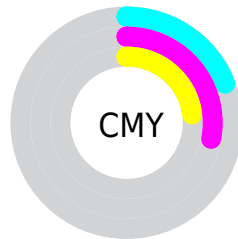
- Red (81%)
- Green (72%)
- Blue (77%)



- Red (81%)
- Yellow (72%)
- Blue (77%)



- Cyan (0%)
- Magenta (11%)
- Yellow (5%)
- Black (19%)



- Cyan (19%)
- Magenta (28%)
- Yellow (23%)

Brightness & Saturation Gradients

These gradients show how the HunterLab color 71.7857, 5.7563, 1.2010 changes by changing the brightness by 10 percent. The first figure shows a shift by +10% for each color and the second figure -10%.

Similar to the brightness gradients but the following saturation gradients show a change of the HunterLab color 71.7857, 5.7563, 1.2010 by changing the saturation by 10% instead.

■ 71.7857, 5.7563,
1.2010

■ 71.7857, 5.7563,
1.2010

198.1503, 2.6999,
7.0262

■ 60.5259, 5.8534,
0.7330

■ 96.1477, 5.3867,
2.2615

■ 49.9241, 5.8879,
0.3082

109.1888, 5.1272,
2.8466

■ 40.0257, 5.8498,
-0.0681

122.7715, 4.8221,
3.4660

■ 30.8848, 5.7284,
-0.3905

136.8748, 4.4742,
4.1180

■ 22.5703, 5.5087,
-0.6519

151.4803, 4.0860,
4.8013

■ 15.1744, 5.1688,
-0.8418

166.5713, 3.6597,

■ 8.8040, 4.7782,

5.5145

-0.9827

182.1325, 3.1971,
6.2565

0.0000, NaN, NaN

0.0000, NaN, NaN

■ 71.7857, 5.7563,
1.2010

■ 71.7857, 5.7563,
1.2010

■ 65.6641, 14.9105,
-1.2722

■ 78.2551, -3.2297,
3.9697

■ 59.9453, 24.1847,
-3.3654

■ 85.0194, -12.0282,
6.9652

■ 54.7040, 33.4522,
-4.9614

■ 92.0413, -20.6492,
10.1412

■ 50.0263, 42.4770,
-5.9150

■ 95.2990, -23.3426,
9.1281

■ 46.0084, 50.8720,

■ 95.6082, -21.5921,

-6.0633

4.7110

■ 42.7449, 58.0922,
-5.2585

■ 95.9195, -19.8359,
0.2787

■ 40.3084, 63.5153,
-3.4283

■ 38.7179, 66.6505,
-0.6471

■ 37.8787, 67.7258,
2.3262

Harmonies

Analogous

The Analogous color harmony consists of three colors that are next to each other on the color wheel.



71.7873, 2.9893, -3.1696



71.7857, 5.7563, 1.2010



71.7873, 5.9046, 6.0218

Triad

The Triadic color harmony groups three colors that are evenly spaced from another and form a triangle on the color wheel.



71.7873, 5.7543, 1.2023



71.7873, -6.0776, 12.3618



71.7873, -10.7877, -2.7625

Complementary

The Complementary color scheme is a pair of colors which are on the opposite of each other on the color wheel.



71.7857, 5.7563, 1.2010



76.6534, -13.2107, 7.0653

Split Complementary

Split-complementary colors differ from the complementary color scheme. The scheme consists of three colors, the original color and two neighbors of the complement color.



71.7873, -13.0801, 1.7270



71.7857, 5.7563, 1.2010



71.7873, -10.4121, 10.3303

Square

The Square scheme is like the rectangle color scheme, but the four colors are evenly spaced on the color wheel.



71.7873, 5.7543, 1.2023



71.7873, -1.0226, 12.2429



71.7873, -12.9445, 6.5115



71.7873, -6.6033, -5.5652

Rectangle

The Rectangle color scheme consists of four colors that form a rectangle on the color wheel.



71.7857, 5.7563, 1.2010



71.7873, 4.4946, 8.8278



71.7873, -12.9445, 6.5115



71.7873, -11.7999, -1.3877

Sweetspot

The Sweet Spot groups the original color and five complimentary colors.



71.7873, 5.7543, 1.2023



97.4589, -1.9152, 4.3257



70.9613, 3.7079, -5.5320



44.7775, -0.4614, 1.8665

0.0000, NaN, NaN



46.2646, -2.4686, 2.5136

Same Dimension

The Same Dimension uses a secret algorithm to generate beautiful new colors.



71.7873, 5.7543, 1.2023



89.2543, 9.6420, 0.8471



71.4435, 3.9124, 6.1056



34.5106, 1.9983, 0.7828



30.0982, 53.8737, 1.3898



7.2285, 13.1427, -1.2487

Inverse Universe

The Inverse Universe completely reimagines the original color for something new.



71.7873, 5.7543, 1.2023



89.2543, 9.6420, 0.8471



76.9966, -11.2942, 2.1679



34.5106, 1.9983, 0.7828



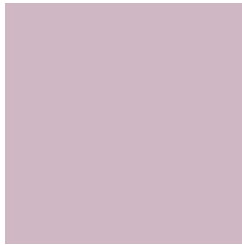
30.0982, 53.8737, 1.3898



7.2285, 13.1427, -1.2487

Previews

White Background



This preview shows how the HunterLab color 71.7857, 5.7563, 1.2010 looks on a white background.

Color Contrast Check

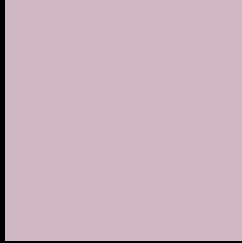
Large Text (above 18pt) WCAG AA × Fail

Any Text WCAG AA × Fail

Large Text (above 18pt) WCAG AAA × Fail

Any Text WCAG AAA × Fail

Black Background



This preview shows how the HunterLab color 71.7857, 5.7563, 1.2010 looks on a black background.

Color Contrast Check

Large Text (above 18pt) WCAG AA ✓ Pass

Any Text WCAG AA ✓ Pass

Large Text (above 18pt) WCAG AAA ✓ Pass

Any Text WCAG AAA ✓ Pass

If you want to check with other color combinations, try the [Color Contrast Checker](#).

HunterLab 71.7857, 5.7563, 1.2010 Background



This preview shows how black text looks on a background with the HunterLab color 71.7857, 5.7563, 1.2010.



This preview shows how white text looks on a background with the HunterLab color 71.7857, 5.7563,

Color Blindness Simulation

Color vision deficiency is a very complex topic, and I could not describe the different causes any better than Wikipedia does, so if you want to learn more, you should check out their [article about color blindness](#).

Dichromacy



Original Color

71.7857, 5.7563, 1.2010

Protanopia

71.8297, -1.4690, -0.3646

Deuteranopia

71.6856, 5.4213, 1.0732



Tritanopia

71.8496, 6.0973, 0.2931

Trichromacy



Original Color

71.7857, 5.7563, 1.2010

Protanomaly

71.7553, 1.2705, 0.0926

Deuteranomaly

71.6856, 5.4213, 1.0732

Tritanomaly

71.8175, 5.9263, 0.7483

Monochromacy



Original Color

71.7857, 5.7563, 1.2010

Achromatopsia

72.6027, -3.8739, 3.9446

Achromatomaly

72.1912, -0.6050, 3.0375

CSS Examples

Text

The CSS property to change the color of the text to HunterLab 71.7857, 5.7563, 1.2010 is called "color". The color property can be set on classes, ids or directly on the HTML element.

This example shows how text in the color `rgb(207, 184, 196)` looks like.

```
.text, #text, p{  
    color:rgb(207, 184, 196)  
}
```

If you want to add a text shadow in that color use the text-shadow property, you can generate a text shadow directly with our [CSS Text Shadow Generator](#).

Here you see how black text with a 4 pixel rgb(207, 184, 196) colored shadow looks like.

```
.shadow{ text-shadow: 4px 4px 2px rgb(207, 184, 196) }
```

Border

The CSS property to change the border of an element to HunterLab 71.7857, 5.7563, 1.2010 is called "border".

The border property can be set on classes, ids or directly on the HTML element.

This example shows the color as border, it can be applied via the CSS property "border" or "border-color".

```
.border, #border, table{ border:4px solid rgb(207, 184, 196) }
```


If only the border color should be changed use the property border-color.

```
.border{ border-color:rgb(207, 184, 196) }
```

If you want to add a box shadow in that color use:

Here you see how a box with a 4 pixel rgb(207, 184, 196) colored shadow looks like.

```
.boxshadow{ -moz-box-shadow:4px 4px 4px  
4px rgb(207, 184, 196); -webkit-box-  
shadow:4px 4px 4px 4px rgb(207, 184, 196);  
box-shadow:4px 4px 4px 4px rgb(207, 184,  
196) }
```

Background

The CSS property to change the background color of an element to HunterLab 71.7857, 5.7563, 1.2010 is called "background". The background property can be set on classes, ids or directly on the HTML element.

```
.background, #background, body{  
background: rgb(207, 184, 196) }
```

If only the background color should be changed can be used:

```
.background{ background-color: rgb(207,  
184, 196) }
```

This example shows the color as background, it is applied via the CSS property "background".

To optimize and compress your CSS code, you can use our [online CSS compressor and optimizer](#) based on csstidy. If you want to create a linear or radial gradient as background or border, check our [CSS Gradient Generator](#).

Hey! You found this booklet interesting? Support Converting Colors with the new Membership Option!

The pro membership hides all ads, plus gives you double the colors in the color bucket, and more awesome pro features!

[Learn more, Memberships starting at \\$2.50/m!](#)

**Follow me
on Twitter!**

@ConvertingColor