

Converting Colors

HunterLab(71.7797, 4.0209,
12.4164)

Have a look what the booklet for
HunterLab(71.7797, 4.0209,
12.4164) contains.

HunterLab(71.7756, 4.2663, 12.4765)	3
<i>Conversions</i>	4
<i>Details</i>	6
<i>Harmonies</i>	12
<i>Previews</i>	24
<i>Color Blindness Simulation</i>	28
<i>CSS Examples</i>	31

Color

**HunterLab(71.7756, 4.2663,
12.4765)**

Conversions

Conversions Part 1

Format	Color
Hex	D6B8AB
RGB	214, 184, 171
RGB Percent	84%, 72%, 67%
CMY	0.1608, 0.2784, 0.3294
CMYK	0.00, 0.14, 0.20, 0.16
HSL	18°, 34%, 75%
HSV	18°, 20%, 84%
XYZ	52.2227, 51.5174, 45.7195
YIQ	191.4880, 22.0530, 2.3170

Conversions

Conversions Part 2

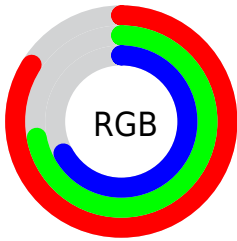
Format	Color
R_{YB}	214, 190, 171
Decimal	14071979
CIE Lab	76.99, 8.69, 10.57
CIE LCh	77, 13.684, 50.550
Yxy	51.5197, 0.3494, 0.3447
Android (android.graphics.Color)	4292262059 (0xFFD6B8AB)
YUV	191.4880, -10.1006, 19.7430
Hunter-Lab	71.7756, 4.2663, 12.4765

Details

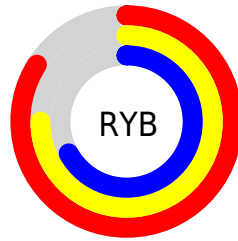
The HunterLab color $71.7756, 4.2663, 12.4765$ is a light color, and the websafe version is hex FFCCCC . A complement of this color would be $74.3538, -10.5209, -5.0975$, and the grayscale version is $72.4223, -3.8643, 3.9348$.

A 20% lighter version of the original color is $94.3775, -2.2642, 12.9139$, and $49.9354, 4.6386, 10.1289$ is the 20% darker color. If you saturate the color by 10%, you get $67.0000, 9.0507, 16.0584$, and if you desaturate by 10%, it is $76.7698, -0.1898, 8.6071$.

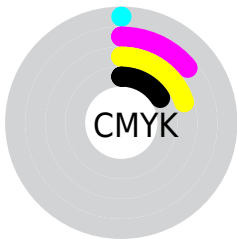
Distribution



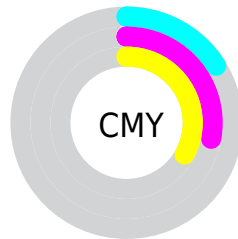
- Red (84%)
- Green (72%)
- Blue (67%)



- Red (84%)
- Yellow (75%)
- Blue (67%)



- Cyan (0%)
- Magenta (14%)
- Yellow (20%)
- Black (16%)



- Cyan (16%)
- Magenta (28%)
- Yellow (33%)

Brightness & Saturation Gradients


These gradients show how the HunterLab color 71.7756, 4.2663, 12.4765 changes by changing the brightness by 10 percent. The first figure shows a shift by +10% for each color and the second figure -10%.


Similar to the brightness gradients but the following saturation gradients show a change of the HunterLab color 71.7756, 4.2663, 12.4765 by changing the saturation by 10% instead.


 71.7756, 4.2663,
12.4765

 71.7756, 4.2663,
12.4765


198.1362, 0.6568,
23.2105

 60.5164, 4.4375,
11.3252

 96.1366, 3.7574,
14.7934

 49.9152, 4.5506,
10.1710


109.1773, 3.4326,
15.9622

 40.0174, 4.5959,
9.0084


122.7595, 3.0646,
17.1406

 30.8772, 4.5636,
7.8274

136.8624, 2.6560,
18.3298

 22.5635, 4.4399,
6.6115

151.4674, 2.2090,
19.5309

 15.1684, 4.2045,
5.3315

166.5580, 1.7257,

 8.7985, 3.9280,

20.7443

5.4568

182.1188, 1.2078,
21.9707

0.0000, NaN, NaN

0.0000, NaN, NaN

■ 71.7756, 4.2663,
12.4765

■ 71.7756, 4.2663,
12.4765

■ 67.0000, 9.0507,
16.0584

■ 76.7698, -0.1898,
8.6071

■ 62.4663, 14.1910,
19.2902

■ 81.9538, -4.3382,
4.4946

■ 58.2089, 19.6913,
22.1003

■ 87.3089, -8.2112,
0.1778

■ 54.2652, 25.5322,
24.4033

■ 92.7621, -12.1484,
-3.5227

■ 50.6769, 31.6542,

■ 96.4553, -17.8958,

26.1060

0.9677

■ 47.4877, 37.9396,
27.1201

■ 44.7399, 44.1965,
27.3891

■ 42.4789, 50.0685,
27.0518

Harmonies

Analogous

The Analogous color harmony consists of three colors that are next to each other on the color wheel.



71.7772, 8.2216, 7.9480



71.7756, 4.2663, 12.4765



71.7772, -1.7745, 14.6523

Triad

The Triadic color harmony groups three colors that are evenly spaced from another and form a triangle on the color wheel.



71.7772, 4.2640, 12.4776



71.7772, -15.7264, 5.8278



71.7772, 0.5968, -8.1133

Complementary

The Complementary color scheme is a pair of colors which are on the opposite of each other on the color wheel.



71.7756, 4.2663, 12.4765



74.3538, -10.5209, -5.0975

Split Complementary

Split-complementary colors differ from the complementary color scheme. The scheme consists of three colors, the original color and two neighbors of the complement color.



71.7772, -5.8699, -8.8087



71.7756, 4.2663, 12.4765



71.7772, -15.1424, -0.3835

Square

The Square scheme is like the rectangle color scheme, but the four colors are evenly spaced on the color wheel.



71.7772, 4.2640, 12.4776



71.7772, -13.2124, 11.0440



71.7772, -11.5876, -5.8710



71.7772, 6.0527, -4.0476

Rectangle

The Rectangle color scheme consists of four colors that form a rectangle on the color wheel.



71.7756, 4.2663, 12.4765



71.7772, -6.1029, 14.6192



71.7772, -11.5876, -5.8710



71.7772, -1.5360, -8.7623

Sweetspot

The Sweet Spot groups the original color and five complimentary colors.



71.7772, 4.2640, 12.4776



96.1415, -2.3145, 8.5062



69.0249, 15.8762, -4.7077



44.2874, -0.9150, 4.0874

0.0000, NaN, NaN



46.2646, -2.4686, 2.5136

Same Dimension

The Same Dimension uses a secret algorithm to generate beautiful new colors.



71.7772, 4.2640, 12.4776



85.0807, 7.5693, 17.0735



78.1608, -6.5851, 18.8205



36.0930, -0.2235, 3.9027



33.2680, 38.2272, 21.1688



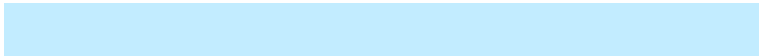
9.0103, 7.1397, 5.6771

Inverse Universe

The Inverse Universe completely reimagines the original color for something new.



74.3538, -10.5209, -5.0975



88.8467, -14.0747, -8.6339



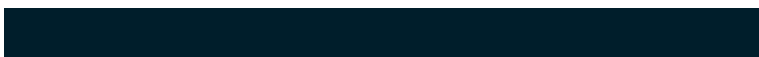
67.8195, 0.2116, -13.8237



36.6665, -3.5064, -0.0047



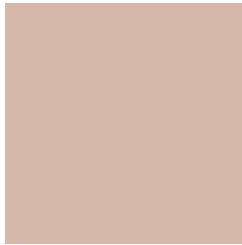
40.2137, -8.4316, -32.0623



10.5723, -3.0890, -6.5462

Previews

White Background



This preview shows how the HunterLab color 71.7756, 4.2663, 12.4765 looks on a white background.

Color Contrast Check

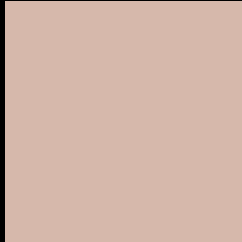
Large Text (above 18pt) WCAG AA × Fail

Any Text WCAG AA × Fail

Large Text (above 18pt) WCAG AAA × Fail

Any Text WCAG AAA × Fail

Black Background



This preview shows how the HunterLab color 71.7756, 4.2663, 12.4765 looks on a black background.

Color Contrast Check

Large Text (above 18pt) WCAG AA ✓ Pass

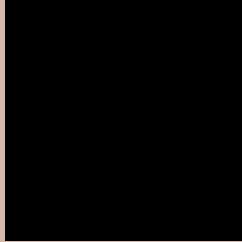
Any Text WCAG AA ✓ Pass

Large Text (above 18pt) WCAG AAA ✓ Pass

Any Text WCAG AAA ✓ Pass

If you want to check with other color combinations, try the [Color Contrast Checker](#).

HunterLab 71.7756, 4.2663, 12.4765 Background



This preview shows how black text looks on a background with the HunterLab color 71.7756, 4.2663, 12.4765.



This preview shows how white text looks on a background with the HunterLab color 71.7756, 4.2663,

12.4765.

Color Blindness Simulation

Color vision deficiency is a very complex topic, and I could not describe the different causes any better than Wikipedia does, so if you want to learn more, you should check out their [article about color blindness](#).

Dichromacy



Original Color

71.7756, 4.2663, 12.4765

Protanopia

71.9397, -4.1165, 11.2538

Deuteranopia

71.6981, 5.4892, 12.4157



Tritanopia

71.9302, 10.5824, 1.9514

Trichromacy



Original Color

71.7756, 4.2663, 12.4765

Protanomaly

71.8889, -1.2715, 11.6689

Deuteranomaly

71.5921, 5.1341, 12.2971

Tritanomaly

71.8331, 8.2538, 6.0650

Monochromacy



Original Color

71.7756, 4.2663, 12.4765

Achromatopsia

72.1800, -3.8513, 3.9217

Achromatomaly

71.8117, -0.9196, 6.7937

CSS Examples

Text

The CSS property to change the color of the text to HunterLab 71.7756, 4.2663, 12.4765 is called "color". The color property can be set on classes, ids or directly on the HTML element.

This example shows how text in the color `rgb(214, 184, 171)` looks like.

```
.text, #text, p{  
    color:rgb(214, 184, 171)  
}
```

If you want to add a text shadow in that color use the text-shadow property, you can generate a text shadow directly with our [CSS Text Shadow Generator](#).

Here you see how black text with a 4 pixel rgb(214, 184, 171) colored shadow looks like.

```
.shadow{ text-shadow: 4px 4px 2px rgb(214, 184, 171) }
```

Border

The CSS property to change the border of an element to HunterLab 71.7756, 4.2663, 12.4765 is called "border". The border property can be set on classes, ids or directly on the HTML element.

This example shows the color as border, it can be applied via the CSS property "border" or "border-color".

```
.border, #border, table{ border:4px solid rgb(214, 184, 171) }
```


If only the border color should be changed use the property `border-color`.

```
.border{ border-color:rgb(214, 184, 171) }
```

If you want to add a box shadow in that color use:

Here you see how a box with a 4 pixel `rgb(214, 184, 171)` colored shadow looks like.

```
.boxshadow{ -moz-box-shadow:4px 4px 4px  
4px rgb(214, 184, 171); -webkit-box-  
shadow:4px 4px 4px 4px rgb(214, 184, 171);  
box-shadow:4px 4px 4px 4px rgb(214, 184,  
171) }
```

Background

The CSS property to change the background color of an element to HunterLab 71.7756, 4.2663, 12.4765 is called "background". The background property can be set on classes, ids or directly on the HTML element.

```
.background, #background, body{  
background: rgb(214, 184, 171) }
```

If only the background color should be changed can be used:

```
.background{ background-color: rgb(214,  
184, 171) }
```

This example shows the color as background, it is applied via the CSS property "background".

To optimize and compress your CSS code, you can use our [online CSS compressor and optimizer](#) based on csstidy. If you want to create a linear or radial gradient as background or border, check our [CSS Gradient Generator](#).

Hey! You found this booklet interesting? Support Converting Colors with the new Membership Option!

The pro membership hides all ads, plus gives you double the colors in the color bucket, and more awesome pro features!

[Learn more, Memberships starting at \\$2.50/m!](#)

**Follow me
on Twitter!**

@ConvertingColor