

Converting Colors

HunterLab(71.7947, 16.1491,
8.0183)

Have a look what the booklet for
HunterLab(71.7947, 16.1491,
8.0183) contains.

HunterLab(71.7056, 16.2181, 7.8754)	3
<i>Conversions</i>	4
<i>Details</i>	6
<i>Harmonies</i>	12
<i>Previews</i>	24
<i>Color Blindness Simulation</i>	28
<i>CSS Examples</i>	31

Color

**HunterLab(71.7056, 16.2181,
7.8754)**

Conversions

Conversions Part 1

Format	Color
Hex	E7B0B6
RGB	231, 176, 182
RGB Percent	91%, 69%, 71%
CMY	0.0941, 0.3098, 0.2863
CMYK	0.00, 0.24, 0.21, 0.09
HSL	353°, 53%, 80%
HSV	353°, 24%, 91%
XYZ	56.9238, 51.4169, 51.1802
YIQ	193.1290, 30.8540, 13.5260

Conversions

Conversions Part 2

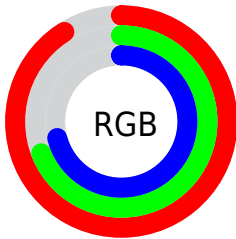
Format	Color
R_{YB}	231, 176, 182
Decimal	15184054
CIE _{Lab}	76.93, 20.89, 4.72
CIE _{LCh}	77, 21.419, 12.736
Yxy	51.4193, 0.3568, 0.3223
Android (android.graphics.Color)	4293374134 (0xFFE7B0B6)
YUV	193.1290, -5.4866, 33.2129
Hunter-Lab	71.7056, 16.2181, 7.8754

Details

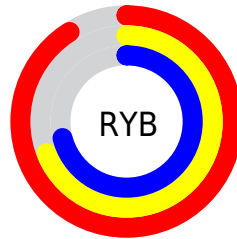
The HunterLab color **71.7056, 16.2181, 7.8754** is a light color, and the websafe version is hex **CC9999**. A complement of this color would be **84.7463, -21.7749, 2.0000**, and the grayscale version is **73.0950, -3.9002, 3.9714**.

A 20% lighter version of the original color is **92.2747, 3.9704, 4.9546**, and **49.8647, 15.5620, 6.3042** is the 20% darker color. If you saturate the color by 10%, you get **65.0604, 25.5221, 9.6320**, and if you desaturate by 10%, it is **78.8520, 7.1884, 6.4267**.

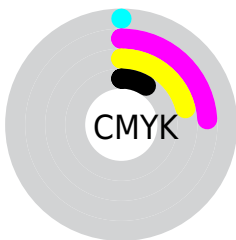
Distribution



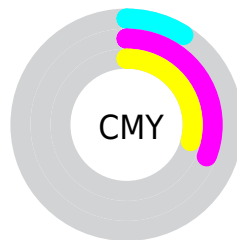
- Red (91%)
- Green (69%)
- Blue (71%)



- Red (91%)
- Yellow (69%)
- Blue (71%)



- Cyan (0%)
- Magenta (24%)
- Yellow (21%)
- Black (9%)



- Cyan (9%)
- Magenta (31%)
- Yellow (29%)

Brightness & Saturation Gradients

These gradients show how the HunterLab color 71.7056, 16.2181, 7.8754 changes by changing the brightness by 10 percent. The first figure shows a shift by +10% for each color and the second figure -10%.

Similar to the brightness gradients but the following saturation gradients show a change of the HunterLab color 71.7056, 16.2181, 7.8754 by changing the saturation by 10% instead.

71.7056, 16.2181,
7.8754

71.7056, 16.2181,
7.8754

198.0380, 16.8433,
16.4366

60.4503, 15.8248,
7.0306

96.0595, 16.7668,
9.6321

49.8532, 15.3459,
6.2050

109.0968, 16.9409,
10.5417

39.9598, 14.7676,
5.3987

122.6758, 17.0543,
11.4725

30.8244, 14.0754,
4.6097

136.7756, 17.1114,
12.4243

22.5159, 13.2511,
3.8338

151.3777, 17.1158,
13.3969

15.1268, 12.2732,
3.0628

166.4653, 17.0708,

8.7604, 11.2667,

14.3899

2.7112

182.0234, 16.9792,
15.4033

0.0000, INF, NaN

0.0000, NaN, NaN

■ 71.7056, 16.2181,
7.8754

■ 71.7056, 16.2181,
7.8754

■ 65.0604, 25.5221,
9.6320

■ 78.8520, 7.1884,
6.4267

■ 59.0092, 34.9972,
11.7181

■ 86.4161, -1.5299,
5.2447

■ 53.6706, 44.3912,
14.1287

■ 94.3373, -9.9517,
4.2917

■ 49.1756, 53.2544,
16.7970

■ 97.8412, -12.9291,
2.7324

■ 45.6506, 60.9242,

19.5659

■ 43.1836, 66.6472,
22.1861

■ 41.7742, 69.8903,
24.3704

■ 41.3037, 70.9057,
25.3573

Harmonies

Analogous

The Analogous color harmony consists of three colors that are next to each other on the color wheel.



71.7073, 15.7742, -1.8276



71.7056, 16.2181, 7.8754



71.7073, 11.0742, 15.3933

Triad

The Triadic color harmony groups three colors that are evenly spaced from another and form a triangle on the color wheel.



71.7073, 16.2155, 7.8767



71.7073, -16.5990, 16.2437



71.7073, -9.5301, -16.1845

Complementary

The Complementary color scheme is a pair of colors which are on the opposite of each other on the color wheel.



71.7056, 16.2181, 7.8754



84.7463, -21.7749, 2.0000

Split Complementary

Split-complementary colors differ from the complementary color scheme. The scheme consists of three colors, the original color and two neighbors of the complement color.



71.7073, -17.6082, -9.8727



71.7056, 16.2181, 7.8754



71.7073, -21.5309, 9.1969

Square

The Square scheme is like the rectangle color scheme, but the four colors are evenly spaced on the color wheel.



71.7073, 16.2155, 7.8767



71.7073, -8.0820, 19.7526



71.7073, -21.8898, -0.3115



71.7073, 0.5235, -16.6683

Rectangle

The Rectangle color scheme consists of four colors that form a rectangle on the color wheel.



71.7056, 16.2181, 7.8754



71.7073, 5.3306, 18.5222



71.7073, -21.8898, -0.3115



71.7073, -12.5526, -14.6376

Sweetspot

The Sweet Spot groups the original color and five complimentary colors.



71.7073, 16.2155, 7.8767



93.8898, 1.4019, 6.2641



72.6383, 22.4692, -16.5560



43.1983, 0.9210, 2.9340

0.0000, NaN, NaN



46.2646, -2.4686, 2.5136

Same Dimension

The Same Dimension uses a secret algorithm to generate beautiful new colors.



71.7073, 16.2155, 7.8767



76.1624, 23.6755, 9.8170



77.5215, 4.2844, 16.4267



37.9386, 1.5496, 2.7178



30.9400, 53.1428, 18.7749



8.4616, 14.6348, 4.3515

Inverse Universe

The Inverse Universe completely reimagines the original color for something new.



71.7073, 16.2155, 7.8767



76.1624, 23.6755, 9.8170



78.1368, -10.2804, -9.3988



37.9386, 1.5496, 2.7178



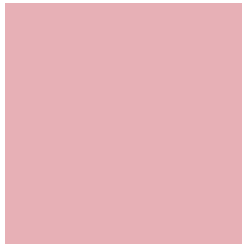
30.9400, 53.1428, 18.7749



8.4616, 14.6348, 4.3515

Previews

White Background



This preview shows how the HunterLab color 71.7056, 16.2181, 7.8754 looks on a white background.

Color Contrast Check

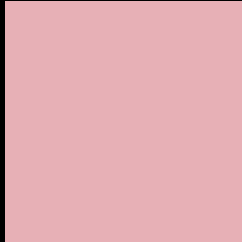
Large Text (above 18pt) WCAG AA × Fail

Any Text WCAG AA × Fail

Large Text (above 18pt) WCAG AAA × Fail

Any Text WCAG AAA × Fail

Black Background



This preview shows how the HunterLab color 71.7056, 16.2181, 7.8754 looks on a black background.

Color Contrast Check

Large Text (above 18pt) WCAG AA ✓ Pass

Any Text WCAG AA ✓ Pass

Large Text (above 18pt) WCAG AAA ✓ Pass

Any Text WCAG AAA ✓ Pass

If you want to check with other color combinations, try the [Color Contrast Checker](#).

HunterLab 71.7056, 16.2181, 7.8754 Background



This preview shows how black text looks on a background with the HunterLab color 71.7056, 16.2181, 7.8754.



This preview shows how white text looks on a background with the HunterLab color 71.7056, 16.2181,

7.8754.

Color Blindness Simulation

Color vision deficiency is a very complex topic, and I could not describe the different causes any better than Wikipedia does, so if you want to learn more, you should check out their [article about color blindness](#).

Dichromacy



Original Color

71.7056, 16.2181, 7.8754

Protanopia

71.7904, -2.2304, 4.4368

Deuteranopia

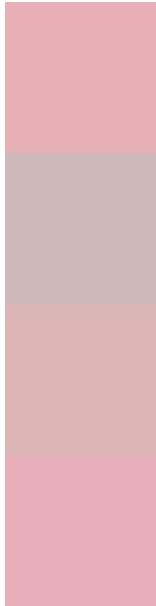
71.8430, 5.0441, 8.2800



Tritanopia

71.7263, 18.0375, 5.1854

Trichromacy



Original Color

71.7056, 16.2181, 7.8754

Protanomaly

71.4784, 4.1100, 5.5835

Deuteranomaly

71.7245, 9.0650, 8.2177

Tritanomaly

71.6665, 17.7282, 6.0391

Monochromacy



Original Color

71.7056, 16.2181, 7.8754

Achromatopsia

73.0258, -3.8965, 3.9676

Achromatomaly

72.4432, 3.0470, 5.2897

CSS Examples

Text

The CSS property to change the color of the text to HunterLab 71.7056, 16.2181, 7.8754 is called "color". The color property can be set on classes, ids or directly on the HTML element.

This example shows how text in the color `rgb(231, 176, 182)` looks like.

```
.text, #text, p{  
    color:rgb(231, 176, 182)  
}
```

If you want to add a text shadow in that color use the text-shadow property, you can generate a text shadow directly with our [CSS Text Shadow Generator](#).

Here you see how black text with a 4 pixel rgb(231, 176, 182) colored shadow looks like.

```
.shadow{ text-shadow: 4px 4px 2px rgb(231, 176, 182) }
```

Border

The CSS property to change the border of an element to HunterLab 71.7056, 16.2181, 7.8754 is called "border". The border property can be set on classes, ids or directly on the HTML element.

This example shows the color as border, it can be applied via the CSS property "border" or "border-color".

```
.border, #border, table{ border:4px solid rgb(231, 176, 182) }
```


If only the border color should be changed use the property `border-color`.

```
.border{ border-color:rgb(231, 176, 182) }
```

If you want to add a box shadow in that color use:

Here you see how a box with a 4 pixel `rgb(231, 176, 182)` colored shadow looks like.

```
.boxshadow{ -moz-box-shadow:4px 4px 4px  
4px rgb(231, 176, 182); -webkit-box-  
shadow:4px 4px 4px 4px rgb(231, 176, 182);  
box-shadow:4px 4px 4px 4px rgb(231, 176,  
182) }
```

Background

The CSS property to change the background color of an element to HunterLab 71.7056, 16.2181, 7.8754 is called "background". The background property can be set on classes, ids or directly on the HTML element.

```
.background, #background, body{  
background: rgb(231, 176, 182) }
```

If only the background color should be changed can be used:

```
.background{ background-color: rgb(231,  
176, 182) }
```

This example shows the color as background, it is applied via the CSS property "background".

To optimize and compress your CSS code, you can use our [online CSS compressor and optimizer](#) based on csstidy. If you want to create a linear or radial gradient as background or border, check our [CSS Gradient Generator](#).

Hey! You found this booklet interesting? Support Converting Colors with the new Membership Option!

The pro membership hides all ads, plus gives you double the colors in the color bucket, and more awesome pro features!

[Learn more, Memberships starting at \\$2.50/m!](#)

**Follow me
on Twitter!**

@ConvertingColor