

Converting Colors

HunterLab(71.8844, 5.9740,
9.6591)

Have a look what the booklet for
HunterLab(71.8844, 5.9740, 9.6591)
contains.

HunterLab(71.7833, 6.1561, 9.5514)	3
<i>Conversions</i>	4
<i>Details</i>	6
<i>Harmonies</i>	12
<i>Previews</i>	24
<i>Color Blindness Simulation</i>	28
<i>CSS Examples</i>	31

Color

**HunterLab(71.7833, 6.1561,
9.5514)**

Conversions

Conversions Part 1

Format	Color
Hex	D7B7B2
RGB	215, 183, 178
RGB Percent	84%, 72%, 70%
CMY	0.1569, 0.2823, 0.3020
CMYK	0.00, 0.15, 0.17, 0.16
HSL	8°, 32%, 77%
HSV	8°, 17%, 84%
XYZ	52.9937, 51.5284, 49.2724
YIQ	191.9980, 20.6770, 5.2290

Conversions

Conversions Part 2

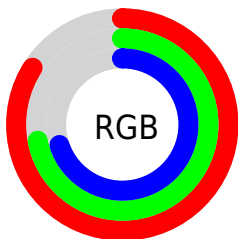
Format	Color
R _Y B	215, 184, 178
Decimal	14137266
CIE Lab	77.00, 10.67, 6.79
CIE LCh	77, 12.651, 32.485
Yxy	51.5307, 0.3446, 0.3351
Android (android.graphics.Color)	4292327346 (0xFFD7B7B2)
YUV	191.9980, -6.9010, 20.1728
Hunter-Lab	71.7833, 6.1561, 9.5514

Details

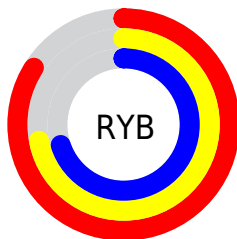
The HunterLab color **71.7833, 6.1561, 9.5514** is a light color, and the websafe version is hex **FFCCCC**. A complement of this color would be **77.7580, -12.8678, -1.3323**, and the grayscale version is **72.6253, -3.8751, 3.9459**.

A 20% lighter version of the original color is **94.3046, -0.4390, 9.1626**, and **49.9195, 6.2598, 7.8257** is the 20% darker color. If you saturate the color by 10%, you get **66.0026, 12.7326, 12.4394**, and if you desaturate by 10%, it is **77.8759, -0.0904, 6.6151**.

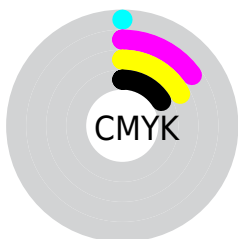
Distribution



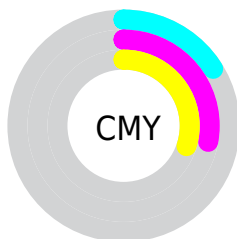
- Red (84%)
- Green (72%)
- Blue (70%)



- Red (84%)
- Yellow (72%)
- Blue (70%)



- Cyan (0%)
- Magenta (15%)
- Yellow (17%)
- Black (16%)





- Cyan (16%)
- Magenta (28%)
- Yellow (30%)

Brightness & Saturation Gradients


These gradients show how the HunterLab color 71.7833, 6.1561, 9.5514 changes by changing the brightness by 10 percent. The first figure shows a shift by +10% for each color and the second figure -10%.


Similar to the brightness gradients but the following saturation gradients show a change of the HunterLab color 71.7833, 6.1561, 9.5514 by changing the saturation by 10% instead.


 71.7833, 6.1561,
9.5514

 71.7833, 6.1561,
9.5514


198.1470, 3.2464,
18.8730

 60.5237, 6.2331,
8.5999


 96.1451, 5.8231,
11.5035

 49.9220, 6.2467,
7.6601

109.1861, 5.5810,
12.5037

 40.0237, 6.1866,
6.7304


122.7687, 5.2925,
13.5211

 30.8830, 6.0416,
5.8059

136.8719, 4.9608,
14.5560

 22.5687, 5.7966,
4.8784

151.4773, 4.5882,
15.6087

 15.1730, 5.4292,
3.9328

166.5682, 4.1771,

 8.8027, 5.0098,

16.6791

3.6787

182.1293, 3.7293,
17.7672

0.0000, NaN, NaN

0.0000, NaN, NaN

■ 71.7833, 6.1561,
9.5514

■ 71.7833, 6.1561,
9.5514

■ 66.0026, 12.7326,
12.4394

■ 77.8759, -0.0904,
6.6151

■ 60.5797, 19.6523,
15.2389

■ 84.2341, -6.0260,
3.6490

■ 55.5775, 26.8805,
17.8926

■ 90.8260, -11.6864,
0.6669

■ 51.0683, 34.3167,
20.3132

■ 96.5335, -17.6135,
1.0679

■ 47.1333, 41.7566,

22.3808

■ 43.8555, 48.8628,
23.9505

■ 41.3062, 55.1729,
24.8863

■ 39.5218, 60.1763,
25.1481

■ 39.1532, 61.2580,
25.1984

Harmonies

Analogous

The Analogous color harmony consists of three colors that are next to each other on the color wheel.



71.7849, 8.0530, 4.3814



71.7833, 6.1561, 9.5514



71.7849, 1.5710, 12.9709

Triad

The Triadic color harmony groups three colors that are evenly spaced from another and form a triangle on the color wheel.



71.7849, 6.1538, 9.5526



71.7849, -13.7772, 8.7925



71.7849, -3.3335, -7.9378

Complementary

The Complementary color scheme is a pair of colors which are on the opposite of each other on the color wheel.



71.7833, 6.1561, 9.5514



77.7580, -12.8678, -1.3323

Split Complementary

Split-complementary colors differ from the complementary color scheme. The scheme consists of three colors, the original color and two neighbors of the complement color.



71.7849, -9.0839, -6.5175



71.7833, 6.1561, 9.5514



71.7849, -14.9948, 3.4302

Square

The Square scheme is like the rectangle color scheme, but the four colors are evenly spaced on the color wheel.



71.7849, 6.1538, 9.5526



71.7849, -9.9227, 12.5580



71.7849, -13.3042, -2.2369



71.7849, 2.4644, -5.9747

Rectangle

The Rectangle color scheme consists of four colors that form a rectangle on the color wheel.



71.7833, 6.1561, 9.5514



71.7849, -2.3198, 13.9538



71.7849, -13.3042, -2.2369



71.7849, -5.3360, -7.8402

Sweetspot

The Sweet Spot groups the original color and five complimentary colors.



71.7849, 6.1538, 9.5526



96.1102, -1.6957, 7.2495



71.3758, 14.1058, -6.4568



44.2150, -0.5444, 3.4718

0.0000, NaN, NaN



46.2646, -2.4686, 2.5136

Same Dimension

The Same Dimension uses a secret algorithm to generate beautiful new colors.



71.7849, 6.1538, 9.5526



84.2309, 10.6032, 12.9964



77.2254, -3.2815, 15.1906



35.6215, 0.5875, 3.3837



30.4272, 46.8957, 19.5701



8.0527, 9.7286, 5.1324

Inverse Universe

The Inverse Universe completely reimagines the original color for something new.



77.7580, -12.8678, -1.3323



93.1052, -17.7045, -3.1858



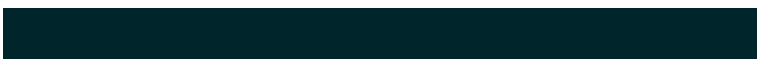
72.0286, -3.6747, -8.6010



37.1592, -4.2992, 0.5838



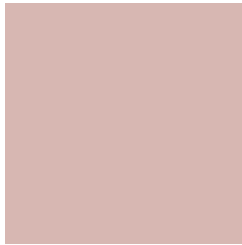
49.0244, -20.6688, -16.6584



12.3720, -5.5016, -3.5876

Previews

White Background



This preview shows how the HunterLab color 71.7833, 6.1561, 9.5514 looks on a white background.

Color Contrast Check

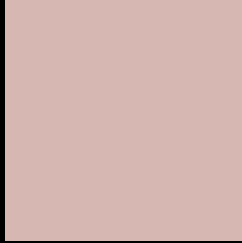
Large Text (above 18pt) WCAG AA × Fail

Any Text WCAG AA × Fail

Large Text (above 18pt) WCAG AAA × Fail

Any Text WCAG AAA × Fail

Black Background



This preview shows how the HunterLab color 71.7833, 6.1561, 9.5514 looks on a black background.

Color Contrast Check

Large Text (above 18pt) WCAG AA ✓ Pass

Any Text WCAG AA ✓ Pass

Large Text (above 18pt) WCAG AAA ✓ Pass

Any Text WCAG AAA ✓ Pass

If you want to check with other color combinations, try the [Color Contrast Checker](#).

HunterLab 71.7833, 6.1561, 9.5514 Background



This preview shows how black text looks on a background with the HunterLab color 71.7833, 6.1561, 9.5514.



This preview shows how white text looks on a background with the HunterLab color 71.7833, 6.1561,

9.5514.

Color Blindness Simulation

Color vision deficiency is a very complex topic, and I could not describe the different causes any better than Wikipedia does, so if you want to learn more, you should check out their [article about color blindness](#).

Dichromacy



Original Color

71.7833, 6.1561, 9.5514

Protanopia

71.7693, -2.7168, 7.6157

Deuteranopia

71.8620, 4.9382, 9.6166



Tritanopia

71.6480, 11.1090, 1.6191

Trichromacy



Original Color

71.7833, 6.1561, 9.5514

Protanomaly

71.8146, 0.4407, 8.1676

Deuteranomaly

71.9663, 5.2880, 9.7374

Tritanomaly

71.6385, 9.2530, 4.4599

Monochromacy



Original Color

71.7833, 6.1561, 9.5514

Achromatopsia

72.6027, -3.8739, 3.9446

Achromatomaly

72.2927, -0.6198, 5.9779

CSS Examples

Text

The CSS property to change the color of the text to HunterLab 71.7833, 6.1561, 9.5514 is called "color". The color property can be set on classes, ids or directly on the HTML element.

This example shows how text in the color `rgb(215, 183, 178)` looks like.

```
.text, #text, p{  
    color:rgb(215, 183, 178)  
}
```

If you want to add a text shadow in that color use the text-shadow property, you can generate a text shadow directly with our [CSS Text Shadow Generator](#).

Here you see how black text with a 4 pixel rgb(215, 183, 178) colored shadow looks like.

```
.shadow{ text-shadow: 4px 4px 2px rgb(215, 183, 178) }
```

Border

The CSS property to change the border of an element to HunterLab 71.7833, 6.1561, 9.5514 is called "border". The border property can be set on classes, ids or directly on the HTML element.

This example shows the color as border, it can be applied via the CSS property "border" or "border-color".

```
.border, #border, table{ border:4px solid rgb(215, 183, 178) }
```


If only the border color should be changed use the property `border-color`.

```
.border{ border-color:rgb(215, 183, 178) }
```

If you want to add a box shadow in that color use:

Here you see how a box with a 4 pixel `rgb(215, 183, 178)` colored shadow looks like.

```
.boxshadow{ -moz-box-shadow:4px 4px 4px  
4px rgb(215, 183, 178); -webkit-box-  
shadow:4px 4px 4px 4px rgb(215, 183, 178);  
box-shadow:4px 4px 4px 4px rgb(215, 183,  
178) }
```

Background

The CSS property to change the background color of an element to HunterLab 71.7833, 6.1561, 9.5514 is called "background". The background property can be set on classes, ids or directly on the HTML element.

```
.background, #background, body{  
background: rgb(215, 183, 178) }
```

If only the background color should be changed can be used:

```
.background{ background-color: rgb(215,  
183, 178) }
```

This example shows the color as background, it is applied via the CSS property "background".

To optimize and compress your CSS code, you can use our [online CSS compressor and optimizer](#) based on csstidy. If you want to create a linear or radial gradient as background or border, check our [CSS Gradient Generator](#).

Hey! You found this booklet interesting? Support Converting Colors with the new Membership Option!

The pro membership hides all ads, plus gives you double the colors in the color bucket, and more awesome pro features!

[Learn more, Memberships starting at \\$2.50/m!](#)

**Follow me
on Twitter!**

@ConvertingColor