

Converting Colors

HunterLab(71.9074, 5.4516,
5.8327)

Have a look what the booklet for
HunterLab(71.9074, 5.4516, 5.8327)
contains.

HunterLab(71.9150, 5.6355, 5.6521)	3
<i>Conversions</i>	4
<i>Details</i>	6
<i>Harmonies</i>	12
<i>Previews</i>	24
<i>Color Blindness Simulation</i>	28
<i>CSS Examples</i>	31

Color

**HunterLab(71.9150, 5.6355,
5.6521)**

Conversions

Conversions Part 1

Format	Color
Hex	D3B8BB
RGB	211, 184, 187
RGB Percent	83%, 72%, 73%
CMY	0.1725, 0.2784, 0.2667
CMYK	0.00, 0.13, 0.11, 0.17
HSL	353°, 23%, 77%
HSV	353°, 13%, 83%
XYZ	52.9741, 51.7177, 54.2042
YIQ	192.4150, 15.1290, 6.6570

Conversions

Conversions Part 2

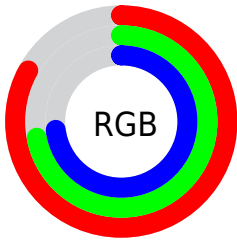
Format	Color
R _Y B	211, 184, 187
Decimal	13875387
CIE Lab	77.11, 10.13, 2.03
CIE LCh	77, 10.332, 11.329
Yxy	51.7200, 0.3334, 0.3255
Android (android.graphics.Color)	4292065467 (0xFFD3B8BB)
YUV	192.4150, -2.6696, 16.2990
Hunter-Lab	71.9150, 5.6355, 5.6521

Details

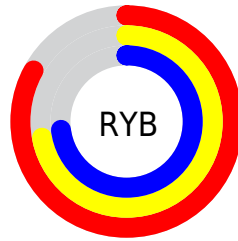
The HunterLab color $71.9150, 5.6355, 5.6521$ is a light color, and the websafe version is hex `CCCCCC`. A complement of this color would be $78.3161, -12.9528, 2.8519$, and the grayscale version is $72.7860, -3.8837, 3.9546$.

A 20% lighter version of the original color is $94.8953, 0.5497, 5.5049$, and $50.0217, 5.7043, 4.1898$ is the 20% darker color. If you saturate the color by 10%, you get $65.4567, 13.7150, 6.9109$, and if you desaturate by 10%, it is $78.7442, -2.1731, 4.6327$.

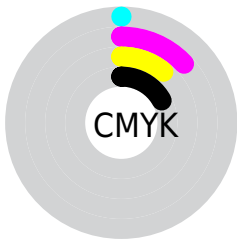
Distribution



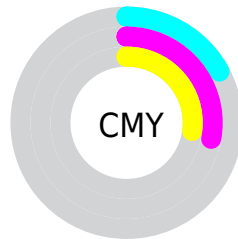
- Red (83%)
- Green (72%)
- Blue (73%)



- Red (83%)
- Yellow (72%)
- Blue (73%)



- Cyan (0%)
- Magenta (13%)
- Yellow (11%)
- Black (17%)





- Cyan (17%)
- Magenta (28%)
- Yellow (27%)

Brightness & Saturation Gradients


These gradients show how the HunterLab color 71.9150, 5.6355, 5.6521 changes by changing the brightness by 10 percent. The first figure shows a shift by +10% for each color and the second figure -10%.


Similar to the brightness gradients but the following saturation gradients show a change of the HunterLab color 71.9150, 5.6355, 5.6521 by changing the saturation by 10% instead.

 71.9150, 5.6355,
5.6521

 71.9150, 5.6355,
5.6521


198.3317, 2.5306,
13.2492

 60.6481, 5.7390,
4.9414


 96.2903, 5.2535,
7.1620

 50.0387, 5.7806,
4.2591


109.3376, 4.9883,
7.9570

 40.1321, 5.7500,
3.6073


122.9261, 4.6776,
8.7780

 30.9824, 5.6366,
2.9871

137.0352, 4.3244,
9.6243

 22.6583, 5.4257,
2.3991

151.6462, 3.9311,
10.4952

 15.2515, 5.0955,
1.8434

166.7425, 3.4999,

 8.8739, 4.6932,

11.3900

1.4311

182.3089, 3.0325,
12.3082

0.0000, NaN, NaN

0.0000, NaN, NaN

■ 71.9150, 5.6355,
5.6521

■ 71.9150, 5.6355,
5.6521

■ 65.4567, 13.7150,
6.9109

■ 78.7442, -2.1731,
4.6327

■ 59.4327, 22.0509,
8.4397

■ 85.8856, -9.7178,
3.8144

■ 53.9290, 30.5533,
10.2650

■ 93.2980, -17.0289,
3.1670

■ 49.0478, 39.0181,
12.3868

■ 96.2232, -18.7349,
0.6697

■ 44.9041, 47.0706,

14.7555

■ 41.6124, 54.1445,
17.2442

■ 39.2579, 59.5687,
19.6419

■ 37.8545, 62.8198,
21.6924

■ 37.2995, 64.0470,
22.7812

Harmonies

Analogous

The Analogous color harmony consists of three colors that are next to each other on the color wheel.



71.9166, 5.3054, 0.9855



71.9150, 5.6355, 5.6521



71.9166, 3.3725, 9.5861

Triad

The Triadic color harmony groups three colors that are evenly spaced from another and form a triangle on the color wheel.



71.9166, 5.6334, 5.6533



71.9166, -9.9587, 10.3257



71.9166, -6.8330, -5.1057

Complementary

The Complementary color scheme is a pair of colors which are on the opposite of each other on the color wheel.



71.9150, 5.6355, 5.6521



78.3161, -12.9528, 2.8519

Split Complementary

Split-complementary colors differ from the complementary color scheme. The scheme consists of three colors, the original color and two neighbors of the complement color.



71.9166, -10.7812, -2.2600



71.9150, 5.6355, 5.6521



71.9166, -12.5522, 6.7255

Square

The Square scheme is like the rectangle color scheme, but the four colors are evenly spaced on the color wheel.



71.9166, 5.6334, 5.6533



71.9166, -5.6829, 12.1608



71.9166, -12.8492, 2.1314



71.9166, -1.9807, -5.4408

Rectangle

The Rectangle color scheme consists of four colors that form a rectangle on the color wheel.



71.9150, 5.6355, 5.6521



71.9166, 0.7359, 11.3436



71.9166, -12.8492, 2.1314



71.9166, -8.3065, -4.4026

Sweetspot

The Sweet Spot groups the original color and five complimentary colors.



71.9166, 5.6334, 5.6533



96.4850, -1.5024, 5.8834



72.3703, 8.6882, -5.7434



44.3358, -0.3588, 2.7632

0.0000, NaN, NaN



46.2646, -2.4686, 2.5136

Same Dimension

The Same Dimension uses a secret algorithm to generate beautiful new colors.



71.9166, 5.6334, 5.6533



87.1649, 9.3210, 7.3454



74.8672, -0.1548, 10.2157



34.3937, 1.3701, 2.4488



28.9892, 49.8033, 17.5039



6.9082, 11.9742, 3.3504

Inverse Universe

The Inverse Universe completely reimagines the original color for something new.



71.9166, 5.6334, 5.6533



87.1649, 9.3210, 7.3454



75.1702, -7.2795, -2.4171



34.3937, 1.3701, 2.4488



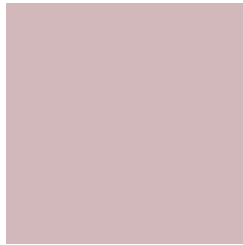
28.9892, 49.8033, 17.5039



6.9082, 11.9742, 3.3504

Previews

White Background



This preview shows how the HunterLab color 71.9150, 5.6355, 5.6521 looks on a white background.

Color Contrast Check

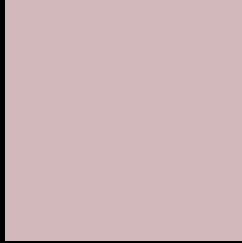
Large Text (above 18pt) WCAG AA × Fail

Any Text WCAG AA × Fail

Large Text (above 18pt) WCAG AAA × Fail

Any Text WCAG AAA × Fail

Black Background



This preview shows how the HunterLab color 71.9150, 5.6355, 5.6521 looks on a black background.

Color Contrast Check

Large Text (above 18pt) WCAG AA ✓ Pass

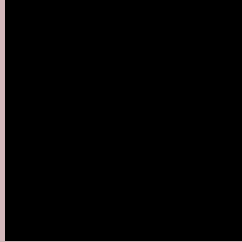
Any Text WCAG AA ✓ Pass

Large Text (above 18pt) WCAG AAA ✓ Pass

Any Text WCAG AAA ✓ Pass

If you want to check with other color combinations, try the [Color Contrast Checker](#).

HunterLab 71.9150, 5.6355, 5.6521 Background



This preview shows how black text looks on a background with the HunterLab color 71.9150, 5.6355, 5.6521.



This preview shows how white text looks on a background with the HunterLab color 71.9150, 5.6355,

Color Blindness Simulation

Color vision deficiency is a very complex topic, and I could not describe the different causes any better than Wikipedia does, so if you want to learn more, you should check out their [article about color blindness](#).

Dichromacy



Original Color

71.9150, 5.6355, 5.6521

Protanopia

72.1207, -2.5696, 4.3470

Deuteranopia

71.8126, 5.2924, 5.5277



Tritanopia

71.7525, 8.6640, 0.7166

Trichromacy



Original Color

71.9150, 5.6355, 5.6521

Protanomaly

72.0555, 0.2132, 4.7892

Deuteranomaly

71.8126, 5.2924, 5.5277

Tritanomaly

71.9126, 7.4719, 2.8467

Monochromacy



Original Color

71.9150, 5.6355, 5.6521

Achromatopsia

72.6027, -3.8739, 3.9446

Achromatomaly

72.2876, -0.4577, 4.5793

CSS Examples

Text

The CSS property to change the color of the text to HunterLab 71.9150, 5.6355, 5.6521 is called "color". The color property can be set on classes, ids or directly on the HTML element.

This example shows how text in the color `rgb(211, 184, 187)` looks like.

```
.text, #text, p{  
    color:rgb(211, 184, 187)  
}
```

If you want to add a text shadow in that color use the text-shadow property, you can generate a text shadow directly with our [CSS Text Shadow Generator](#).

Here you see how black text with a 4 pixel rgb(211, 184, 187) colored shadow looks like.

```
.shadow{ text-shadow: 4px 4px 2px rgb(211, 184, 187) }
```

Border

The CSS property to change the border of an element to HunterLab 71.9150, 5.6355, 5.6521 is called "border". The border property can be set on classes, ids or directly on the HTML element.

This example shows the color as border, it can be applied via the CSS property "border" or "border-color".

```
.border, #border, table{ border:4px solid rgb(211, 184, 187) }
```


If only the border color should be changed use the property `border-color`.

```
.border{ border-color:rgb(211, 184, 187) }
```

If you want to add a box shadow in that color use:

Here you see how a box with a 4 pixel `rgb(211, 184, 187)` colored shadow looks like.

```
.boxshadow{ -moz-box-shadow:4px 4px 4px  
4px rgb(211, 184, 187); -webkit-box-  
shadow:4px 4px 4px 4px rgb(211, 184, 187);  
box-shadow:4px 4px 4px 4px rgb(211, 184,  
187) }
```

Background

The CSS property to change the background color of an element to HunterLab 71.9150, 5.6355, 5.6521 is called "background". The background property can be set on classes, ids or directly on the HTML element.

```
.background, #background, body{  
background: rgb(211, 184, 187) }
```

If only the background color should be changed can be used:

```
.background{ background-color: rgb(211,  
184, 187) }
```

This example shows the color as background, it is applied via the CSS property "background".

To optimize and compress your CSS code, you can use our [online CSS compressor and optimizer](#) based on csstidy. If you want to create a linear or radial gradient as background or border, check our [CSS Gradient Generator](#).

Hey! You found this booklet interesting? Support Converting Colors with the new Membership Option!

The pro membership hides all ads, plus gives you double the colors in the color bucket, and more awesome pro features!

[Learn more, Memberships starting at \\$2.50/m!](#)

**Follow me
on Twitter!**

@ConvertingColor