

# Converting Colors

HunterLab(71.9113, 6.3707,  
6.9458)

Have a look what the booklet for  
HunterLab(71.9113, 6.3707, 6.9458)  
contains.

<b>HunterLab(71.7452, 6.3724, 6.8457)</b> .....	3
<b><i>Conversions</i></b> .....	4
<b><i>Details</i></b> .....	6
<b><i>Harmonies</i></b> .....	12
<b><i>Previews</i></b> .....	24
<b><i>Color Blindness Simulation</i></b> .....	28
<b><i>CSS Examples</i></b> .....	31

# Color

**HunterLab(71.7452, 6.3724,  
6.8457)**

# Conversions

## Conversions Part 1

<b>Format</b>	<b>Color</b>
Hex	D5B7B8
RGB	213, 183, 184
RGB Percent	84%, 72%, 72%
CMY	0.1647, 0.2823, 0.2784
CMYK	0.00, 0.14, 0.14, 0.16
HSL	358°, 26%, 78%
HSV	358°, 14%, 84%
XYZ	53.0257, 51.4737, 52.4880
YIQ	192.0840, 17.5590, 6.6710

# Conversions

## Conversions Part 2

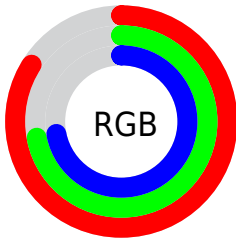
<b>Format</b>	<b>Color</b>
R <sub>Y</sub> B	213, 183, 184
Decimal	14006200
CIE Lab	76.97, 10.90, 3.47
CIE LCh	77, 11.435, 17.653
Yxy	51.4760, 0.3378, 0.3279
Android (android.graphics.Color)	4292196280 (0xFFD5B7B8)
YUV	192.0840, -3.9854, 18.3433
Hunter-Lab	71.7452, 6.3724, 6.8457

# Details

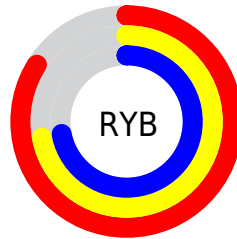
The HunterLab color  $71.7452, 6.3724, 6.8457$  is a light color, and the websafe version is hex  $\text{FFCCCC}$ . A complement of this color would be  $79.0003, -13.5081, 1.6940$ , and the grayscale version is  $72.6506, -3.8765, 3.9472$ .

A 20% lighter version of the original color is  $94.4904, 0.5688, 6.5069$ , and  $49.8729, 6.4229, 5.3166$  is the 20% darker color. If you saturate the color by 10%, you get  $65.2243, 14.3644, 8.7699$ , and if you desaturate by 10%, it is  $78.6545, -1.3063, 5.0993$ .

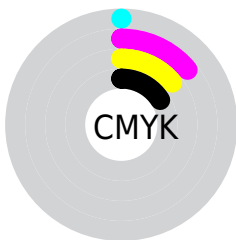
# Distribution



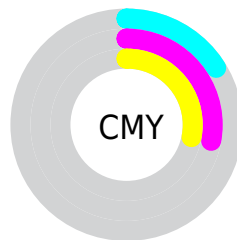
- Red (84%)
- Green (72%)
- Blue (72%)



- Red (84%)
- Yellow (72%)
- Blue (72%)



- Cyan (0%)
- Magenta (14%)
- Yellow (14%)
- Black (16%)




- Cyan (16%)
- Magenta (28%)
- Yellow (28%)

# Brightness & Saturation Gradients

These gradients show how the HunterLab color 71.7452, 6.3724, 6.8457 changes by changing the brightness by 10 percent. The first figure shows a shift by +10% for each color and the second figure -10%.

Similar to the brightness gradients but the following saturation gradients show a change of the HunterLab color 71.7452, 6.3724, 6.8457 by changing the saturation by 10% instead.





 71.7452, 6.3724,  
6.8457

 71.7452, 6.3724,  
6.8457

198.0935, 3.5434,  
14.9538

 60.4877, 6.4386,  
6.0640


 96.1031, 6.0597,  
8.4862

 49.8882, 6.4408,  
5.3060


109.1423, 5.8271,  
9.3419

 39.9924, 6.3685,  
4.5727


122.7231, 5.5479,  
10.2211

 30.8542, 6.2106,  
3.8634

136.8246, 5.2250,  
11.1234

 22.5428, 5.9515,  
3.1765

151.4284, 4.8610,  
12.0482

 15.1503, 5.5689,  
2.5078

166.5177, 4.4581,

 8.7820, 5.1406,

12.9951

2.1148

182.0773, 4.0184,  
13.9638

0.0000, NaN, NaN

0.0000, NaN, NaN

■ 71.7452, 6.3724,  
6.8457

■ 71.7452, 6.3724,  
6.8457

■ 65.2243, 14.3644,  
8.7699

■ 78.6545, -1.3063,  
5.0993

■ 59.1596, 22.6591,  
10.8799

■ 85.8900, -8.6838,  
3.5078

■ 53.6428, 31.1642,  
13.1691

■ 93.4078, -15.7963,  
2.0511

■ 48.7823, 39.6637,  
15.5922

■ 96.3775, -18.1767,  
0.8679

■ 44.6985, 47.7570,

18.0434

■ 41.5079, 54.8424,  
20.3422

■ 39.2900, 60.2249,  
22.2551

■ 38.0421, 63.3971,  
23.5728

■ 37.6321, 64.4873,  
23.9976

# Harmonies

## Analogous

The Analogous color harmony consists of three colors that are next to each other on the color wheel.



71.7468, 6.6338, 1.7532



71.7452, 6.3724, 6.8457



71.7468, 3.3232, 10.8522

# Triad

The Triadic color harmony groups three colors that are evenly spaced from another and form a triangle on the color wheel.



71.7468, 6.3702, 6.8469



71.7468, -11.3724, 10.2670



71.7468, -6.0467, -6.4686

# Complementary

The Complementary color scheme is a pair of colors which are on the opposite of each other on the color wheel.



71.7452, 6.3724, 6.8457



79.0003, -13.5081, 1.6940

# Split Complementary

Split-complementary colors differ from the complementary color scheme. The scheme consists of three colors, the original color and two neighbors of the complement color.



71.7468, -10.7175, -3.8140



71.7452, 6.3724, 6.8457



71.7468, -13.7305, 5.9928

# Square

The Square scheme is like the rectangle color scheme, but the four colors are evenly spaced on the color wheel.



71.7468, 6.3702, 6.8469



71.7468, -6.9649, 12.7238



71.7468, -13.4943, 0.8338



71.7468, -0.6446, -6.1973



# Rectangle

The Rectangle color scheme consists of four colors that form a rectangle on the color wheel.



71.7452, 6.3724, 6.8457



71.7468, 0.1731, 12.4820



71.7468, -13.4943, 0.8338



71.7468, -7.7513, -5.8812

# Sweetspot

The Sweet Spot groups the original color and five complimentary colors.



71.7468, 6.3702, 6.8469



96.4598, -1.6395, 6.2429



72.5743, 10.9668, -6.5164



44.3220, -0.4338, 2.9603

0.0000, NaN, NaN



46.2646, -2.4686, 2.5136



# Same Dimension

The Same Dimension uses a secret algorithm to generate beautiful new colors.



71.7468, 6.3702, 6.8469



85.4288, 10.7981, 9.0988



75.8282, -0.9800, 11.6768



35.2525, 1.2966, 2.8289



29.4169, 50.4196, 18.6808



7.2412, 12.4443, 4.3413



# Inverse Universe

The Inverse Universe completely reimagines the original color for something new.



71.7468, 6.3702, 6.8469



85.4288, 10.7981, 9.0988



74.6459, -6.3693, -4.1162



35.2525, 1.2966, 2.8289



29.4169, 50.4196, 18.6808

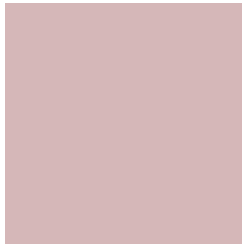


7.2412, 12.4443, 4.3413



# Previews

## White Background



This preview shows how the HunterLab color 71.7452, 6.3724, 6.8457 looks on a white background.

## Color Contrast Check

Large Text (above 18pt) WCAG AA × Fail

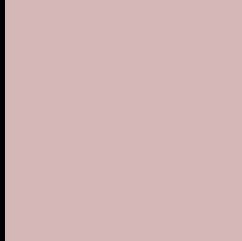
Any Text WCAG AA × Fail

Large Text (above 18pt) WCAG AAA × Fail

Any Text WCAG AAA × Fail



# Black Background



This preview shows how the HunterLab color 71.7452, 6.3724, 6.8457 looks on a black background.

## Color Contrast Check

Large Text (above 18pt) WCAG AA ✓ Pass

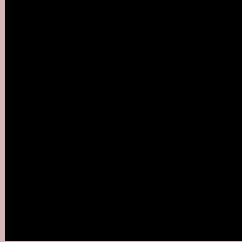
Any Text WCAG AA ✓ Pass

Large Text (above 18pt) WCAG AAA ✓ Pass

Any Text WCAG AAA ✓ Pass

If you want to check with other color combinations, try the [Color Contrast Checker](#).

## HunterLab 71.7452, 6.3724, 6.8457 Background



This preview shows how black text looks on a background with the HunterLab color 71.7452, 6.3724, 6.8457.



This preview shows how white text looks on a background with the HunterLab color 71.7452, 6.3724,

6.8457.

# Color Blindness Simulation

Color vision deficiency is a very complex topic, and I could not describe the different causes any better than Wikipedia does, so if you want to learn more, you should check out their [article about color blindness](#).

## Dichromacy



### Original Color

71.7452, 6.3724, 6.8457

### Protanopia

71.7603, -2.3950, 4.8672

### Deuteranopia

71.8266, 5.1622, 6.9171



## Tritanopia

71.6129, 9.5398, 1.5490

# Trichromacy



## Original Color

71.7452, 6.3724, 6.8457

## Protanomaly

71.7956, 0.7261, 5.4281

## Deuteranomaly

71.9296, 5.5075, 7.0403

## Tritanomaly

71.7730, 8.3561, 3.6550

# Monochromacy



## Original Color

71.7452, 6.3724, 6.8457

## Achromatopsia

72.6027, -3.8739, 3.9446

## Achromatomaly

72.3524, -0.2958, 5.1258

# CSS Examples

## Text

The CSS property to change the color of the text to HunterLab 71.7452, 6.3724, 6.8457 is called "color". The color property can be set on classes, ids or directly on the HTML element.

This example shows how text in the color `rgb(213, 183, 184)` looks like.

```
.text, #text, p{  
    color:rgb(213, 183, 184)  
}
```

If you want to add a text shadow in that color use the text-shadow property, you can generate a text shadow directly with our [CSS Text Shadow Generator](#).

Here you see how black text with a 4 pixel rgb(213, 183, 184) colored shadow looks like.

```
.shadow{ text-shadow: 4px 4px 2px rgb(213, 183, 184) }
```

## Border

The CSS property to change the border of an element to HunterLab 71.7452, 6.3724, 6.8457 is called "border". The border property can be set on classes, ids or directly on the HTML element.

This example shows the color as border, it can be applied via the CSS property "border" or "border-color".

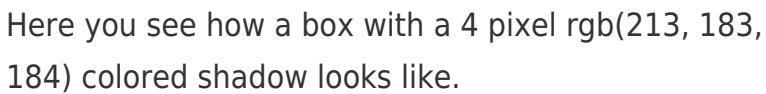
```
.border, #border, table{ border:4px solid rgb(213, 183, 184) }
```



If only the border color should be changed use the property `border-color`.

```
.border{ border-color:rgb(213, 183, 184) }
```

If you want to add a box shadow in that color use:



Here you see how a box with a 4 pixel `rgb(213, 183, 184)` colored shadow looks like.

```
.boxshadow{ -moz-box-shadow:4px 4px 4px 4px rgb(213, 183, 184); -webkit-box-shadow:4px 4px 4px 4px rgb(213, 183, 184); box-shadow:4px 4px 4px 4px rgb(213, 183, 184) }
```

# Background

The CSS property to change the background color of an element to HunterLab 71.7452, 6.3724, 6.8457 is called "background". The background property can be set on classes, ids or directly on the HTML element.

```
.background, #background, body{  
background: rgb(213, 183, 184) }
```

If only the background color should be changed can be used:

```
.background{ background-color: rgb(213,  
183, 184) }
```

This example shows the color as background, it is applied via the CSS property "background".

To optimize and compress your CSS code, you can use our [online CSS compressor and optimizer](#) based on csstidy. If you want to create a linear or radial gradient as background or border, check our [CSS Gradient Generator](#).

Hey! You found this booklet interesting? Support Converting Colors with the new Membership Option!

The pro membership hides all ads, plus gives you double the colors in the color bucket, and more awesome pro features!

**[Learn more, Memberships starting at \\$2.50/m!](#)**

**Follow me  
on Twitter!**

@ConvertingColor