

Converting Colors

HunterLab(71.9380, 4.7663,
9.7306)

Have a look what the booklet for
HunterLab(71.9380, 4.7663, 9.7306)
contains.

HunterLab(71.8620, 4.9382, 9.6166)	3
<i>Conversions</i>	4
<i>Details</i>	6
<i>Harmonies</i>	12
<i>Previews</i>	24
<i>Color Blindness Simulation</i>	28
<i>CSS Examples</i>	31

Color

**HunterLab(71.8620, 4.9382,
9.6166)**

Conversions

Conversions Part 1

Format	Color
Hex	D5B8B2
RGB	213, 184, 178
RGB Percent	84%, 72%, 70%
CMY	0.1647, 0.2784, 0.3020
CMYK	0.00, 0.14, 0.16, 0.16
HSL	10°, 29%, 77%
HSV	10°, 16%, 84%
XYZ	52.6170, 51.6415, 49.3141
YIQ	191.9870, 19.2100, 4.2820

Conversions

Conversions Part 2

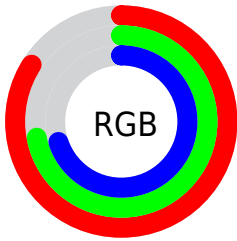
Format	Color
R _Y B	213, 185, 178
Decimal	14006450
CIE Lab	77.07, 9.40, 6.87
CIE LCh	77, 11.643, 36.152
Yxy	51.6438, 0.3426, 0.3363
Android (android.graphics.Color)	4292196530 (0xFFD5B8B2)
YUV	191.9870, -6.8956, 18.4284
Hunter-Lab	71.8620, 4.9382, 9.6166

Details

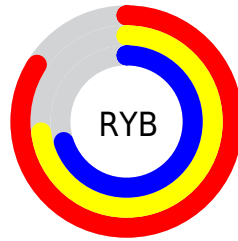
The HunterLab color $71.8620, 4.9382, 9.6166$ is a light color, and the websafe version is hex `CCCCCC`. A complement of this color would be $76.7421, -11.7597, -1.5531$, and the grayscale version is $72.6211, -3.8749, 3.9456$.

A 20% lighter version of the original color is $94.6154, -0.9697, 9.5055$, and $49.9824, 5.0926, 7.8730$ is the 20% darker color. If you saturate the color by 10%, you get $66.3125, 11.0132, 12.6534$, and if you desaturate by 10%, it is $77.6926, -0.8143, 6.4850$.

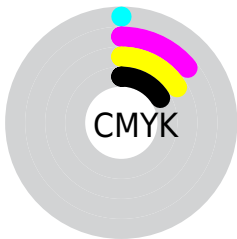
Distribution



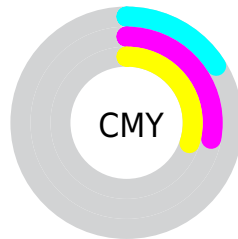
- Red (84%)
- Green (72%)
- Blue (70%)



- Red (84%)
- Yellow (73%)
- Blue (70%)



- Cyan (0%)
- Magenta (14%)
- Yellow (16%)
- Black (16%)





- Cyan (16%)
- Magenta (28%)
- Yellow (30%)

Brightness & Saturation Gradients


These gradients show how the HunterLab color 71.8620, 4.9382, 9.6166 changes by changing the brightness by 10 percent. The first figure shows a shift by +10% for each color and the second figure -10%.


Similar to the brightness gradients but the following saturation gradients show a change of the HunterLab color 71.8620, 4.9382, 9.6166 by changing the saturation by 10% instead.


 71.8620, 4.9382,
9.6166

 71.8620, 4.9382,
9.6166

198.2574, 1.5768,
18.9665

 60.5980, 5.0761,
8.6611


 96.2319, 4.4916,
11.5759

 49.9917, 5.1540,
7.7172


109.2766, 4.1962,
12.5794

 40.0885, 5.1620,
6.7830


122.8628, 3.8564,
13.6001

 30.9424, 5.0897,
5.8536

136.9695, 3.4750,
14.6382

 22.6222, 4.9231,
4.9207

151.5782, 3.0544,
15.6938

 15.2199, 4.6410,
3.9689

166.6723, 2.5967,

 8.8453, 4.2990,

16.7670

3.7002

182.2367, 2.1036,
17.8580

0.0000, NaN, NaN

0.0000, NaN, NaN

■ 71.8620, 4.9382,
9.6166

■ 71.8620, 4.9382,
9.6166

■ 66.3125, 11.0132,
12.6534

■ 77.6926, -0.8143,
6.4850

■ 61.0827, 17.4313,
15.5510

■ 83.7640, -6.2653,
3.2823

■ 56.2262, 24.1752,
18.2506

■ 90.0484, -11.4499,
0.0274

■ 51.8047, 31.1790,
20.6681

■ 96.2419, -17.9697,
0.7060

■ 47.8875, 38.2962,

■ 96.3775, -18.1767,

22.6930

0.8679

■ 44.5479, 45.2711,
24.1962

■ 41.8531, 51.7298,
25.0577

■ 39.8481, 57.2168,
25.2311

■ 39.2948, 58.8266,
25.2431

Harmonies

Analogous

The Analogous color harmony consists of three colors that are next to each other on the color wheel.



71.8636, 7.0239, 4.9855



71.8620, 4.9382, 9.6166



71.8636, 0.5044, 12.5486

Triad

The Triadic color harmony groups three colors that are evenly spaced from another and form a triangle on the color wheel.



71.8636, 4.9360, 9.6177



71.8636, -13.2923, 7.8761



71.8636, -2.6972, -6.8704

Complementary

The Complementary color scheme is a pair of colors which are on the opposite of each other on the color wheel.



71.8620, 4.9382, 9.6166



76.7421, -11.7597, -1.5531

Split Complementary

Split-complementary colors differ from the complementary color scheme. The scheme consists of three colors, the original color and two neighbors of the complement color.



71.8636, -8.0803, -5.9511



71.8620, 4.9382, 9.6166



71.8636, -14.0914, 2.8211

Square

The Square scheme is like the rectangle color scheme, but the four colors are evenly spaced on the color wheel.



71.8636, 4.9360, 9.6177



71.8636, -9.9942, 11.5975



71.8636, -12.2108, -2.3043



71.8636, 2.5321, -4.7295

Rectangle

The Rectangle color scheme consists of four colors that form a rectangle on the color wheel.



71.8620, 4.9382, 9.6166



71.8636, -3.1244, 13.2757



71.8636, -12.2108, -2.3043



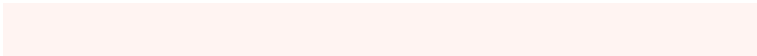
71.8636, -4.5494, -6.9111

Sweetspot

The Sweet Spot groups the original color and five complimentary colors.



71.8636, 4.9360, 9.6177



96.2552, -1.9415, 7.4127



71.0639, 12.8953, -5.3257



44.2913, -0.6742, 3.5574

0.0000, NaN, NaN



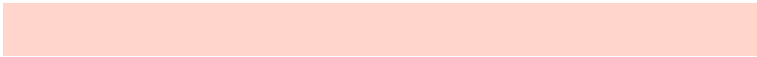
46.2646, -2.4686, 2.5136

Same Dimension

The Same Dimension uses a secret algorithm to generate beautiful new colors.



71.8636, 4.9360, 9.6177



85.4878, 8.8143, 13.2113



77.0000, -3.9084, 14.9460



35.7235, 0.4112, 3.4965



30.8787, 45.4411, 19.8229



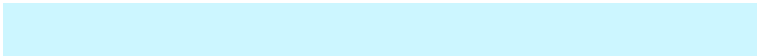
8.2621, 9.1276, 5.2508

Inverse Universe

The Inverse Universe completely reimagines the original color for something new.



76.7421, -11.7597, -1.5531



92.8019, -16.2516, -3.5441



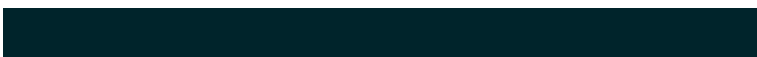
71.3810, -3.1035, -8.3578



37.0519, -4.1274, 0.4563



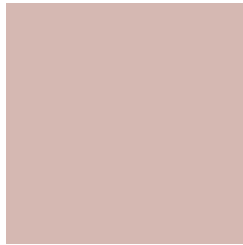
47.0582, -18.0898, -19.7680



11.9730, -4.9893, -4.1947

Previews

White Background



This preview shows how the HunterLab color 71.8620, 4.9382, 9.6166 looks on a white background.

Color Contrast Check

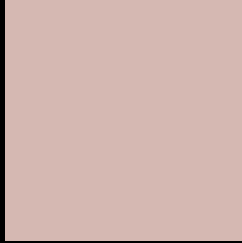
Large Text (above 18pt) WCAG AA × Fail

Any Text WCAG AA × Fail

Large Text (above 18pt) WCAG AAA × Fail

Any Text WCAG AAA × Fail

Black Background



This preview shows how the HunterLab color 71.8620, 4.9382, 9.6166 looks on a black background.

Color Contrast Check

Large Text (above 18pt) WCAG AA ✓ Pass

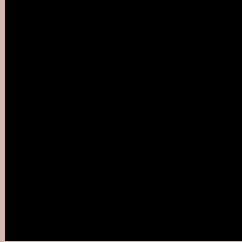
Any Text WCAG AA ✓ Pass

Large Text (above 18pt) WCAG AAA ✓ Pass

Any Text WCAG AAA ✓ Pass

If you want to check with other color combinations, try the [Color Contrast Checker](#).

HunterLab 71.8620, 4.9382, 9.6166 Background



This preview shows how black text looks on a background with the HunterLab color 71.8620, 4.9382, 9.6166.



This preview shows how white text looks on a background with the HunterLab color 71.8620, 4.9382,

9.6166.

Color Blindness Simulation

Color vision deficiency is a very complex topic, and I could not describe the different causes any better than Wikipedia does, so if you want to learn more, you should check out their [article about color blindness](#).

Dichromacy



Original Color

71.8620, 4.9382, 9.6166

Protanopia

72.0409, -3.3756, 8.3536

Deuteranopia

71.8620, 4.9382, 9.6166



Tritanopia

71.7182, 9.8862, 1.6827

Trichromacy



Original Color

71.8620, 4.9382, 9.6166

Protanomaly

71.9849, -0.5547, 8.7821

Deuteranomaly

71.8620, 4.9382, 9.6166

Tritanomaly

71.7120, 8.0324, 4.5247

Monochromacy



Original Color

71.8620, 4.9382, 9.6166

Achromatopsia

72.6027, -3.8739, 3.9446

Achromatomaly

72.2927, -0.6198, 5.9779

CSS Examples

Text

The CSS property to change the color of the text to HunterLab 71.8620, 4.9382, 9.6166 is called "color". The color property can be set on classes, ids or directly on the HTML element.

This example shows how text in the color `rgb(213, 184, 178)` looks like.

```
.text, #text, p{  
    color:rgb(213, 184, 178)  
}
```

If you want to add a text shadow in that color use the text-shadow property, you can generate a text shadow directly with our [CSS Text Shadow Generator](#).

Here you see how black text with a 4 pixel rgb(213, 184, 178) colored shadow looks like.

```
.shadow{ text-shadow: 4px 4px 2px rgb(213, 184, 178) }
```

Border

The CSS property to change the border of an element to HunterLab 71.8620, 4.9382, 9.6166 is called "border". The border property can be set on classes, ids or directly on the HTML element.

This example shows the color as border, it can be applied via the CSS property "border" or "border-color".

```
.border, #border, table{ border:4px solid rgb(213, 184, 178) }
```


If only the border color should be changed use the property border-color.

```
.border{ border-color:rgb(213, 184, 178) }
```

If you want to add a box shadow in that color use:

Here you see how a box with a 4 pixel rgb(213, 184, 178) colored shadow looks like.

```
.boxshadow{ -moz-box-shadow:4px 4px 4px  
4px rgb(213, 184, 178); -webkit-box-  
shadow:4px 4px 4px 4px rgb(213, 184, 178);  
box-shadow:4px 4px 4px 4px rgb(213, 184,  
178) }
```

Background

The CSS property to change the background color of an element to HunterLab 71.8620, 4.9382, 9.6166 is called "background". The background property can be set on classes, ids or directly on the HTML element.

```
.background, #background, body{  
background: rgb(213, 184, 178) }
```

If only the background color should be changed can be used:

```
.background{ background-color: rgb(213,  
184, 178) }
```

This example shows the color as background, it is applied via the CSS property "background".

To optimize and compress your CSS code, you can use our [online CSS compressor and optimizer](#) based on csstidy. If you want to create a linear or radial gradient as background or border, check our [CSS Gradient Generator](#).

Hey! You found this booklet interesting? Support Converting Colors with the new Membership Option!

The pro membership hides all ads, plus gives you double the colors in the color bucket, and more awesome pro features!

[Learn more, Memberships starting at \\$2.50/m!](#)

**Follow me
on Twitter!**

@ConvertingColor