

Converting Colors

HunterLab(71.9513, 12.3693,
6.5508)

Have a look what the booklet for
HunterLab(71.9513, 12.3693,
6.5508) contains.

HunterLab(71.8264, 12.5223, 6.5904)	3
<i>Conversions</i>	4
<i>Details</i>	6
<i>Harmonies</i>	12
<i>Previews</i>	24
<i>Color Blindness Simulation</i>	28
<i>CSS Examples</i>	31

Color

**HunterLab(71.8264, 12.5223,
6.5904)**

Conversions

Conversions Part 1

Format	Color
Hex	E0B3B9
RGB	224, 179, 185
RGB Percent	88%, 70%, 73%
CMY	0.1216, 0.2980, 0.2745
CMYK	0.00, 0.20, 0.17, 0.12
HSL	352°, 42%, 79%
HSV	352°, 20%, 88%
XYZ	55.6176, 51.5903, 52.9256
YIQ	193.1390, 24.8940, 11.4060

Conversions

Conversions Part 2

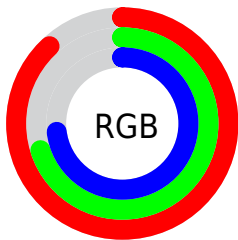
Format	Color
R _Y B	224, 179, 185
Decimal	14726073
CIE Lab	77.04, 17.19, 3.15
CIE LCh	77, 17.481, 10.395
Yxy	51.5927, 0.3473, 0.3222
Android (android.graphics.Color)	4292916153 (0xFFE0B3B9)
YUV	193.1390, -4.0125, 27.0651
Hunter-Lab	71.8264, 12.5223, 6.5904

Details

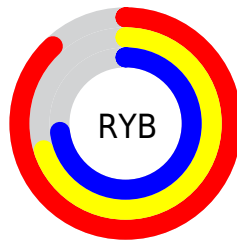
The HunterLab color $71.8264, 12.5223, 6.5904$ is a light color, and the websafe version is hex FFCCCC . A complement of this color would be $82.4368, -18.8872, 2.7587$, and the grayscale version is $73.0950, -3.9002, 3.9714$.

A 20% lighter version of the original color is $93.2885, 2.8786, 4.6441$, and $49.9124, 11.9811, 5.0343$ is the 20% darker color. If you saturate the color by 10%, you get $65.2427, 21.4624, 7.9737$, and if you desaturate by 10%, it is $78.8604, 3.8499, 5.5138$.

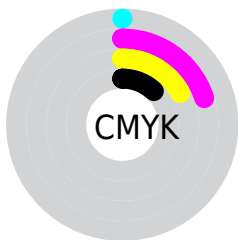
Distribution



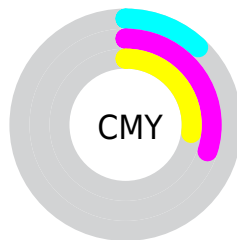
- Red (88%)
- Green (70%)
- Blue (73%)



- Red (88%)
- Yellow (70%)
- Blue (73%)



- Cyan (0%)
- Magenta (20%)
- Yellow (17%)
- Black (12%)



- Cyan (12%)
- Magenta (30%)
- Yellow (27%)

Brightness & Saturation Gradients

These gradients show how the HunterLab color 71.8264, 12.5223, 6.5904 changes by changing the brightness by 10 percent. The first figure shows a shift by +10% for each color and the second figure -10%.

Similar to the brightness gradients but the following saturation gradients show a change of the HunterLab color 71.8264, 12.5223, 6.5904 by changing the saturation by 10% instead.

71.8264, 12.5223,
6.5904

71.8264, 12.5223,
6.5904

198.2075, 11.8818,
14.5873

60.5644, 12.2962,
5.8243

96.1926, 12.7566,
8.2025

49.9602, 11.9919,
5.0828

109.2357, 12.7818,
9.0450

40.0592, 11.5964,
4.3673

122.8202, 12.7514,
9.9115

30.9155, 11.0959,
3.6776

136.9254, 12.6691,
10.8016

22.5980, 10.4725,
3.0125

151.5326, 12.5384,
11.7147

15.1987, 9.7019,
2.3687

166.6252, 12.3619,

8.8261, 8.8629,

12.6503

1.9617

182.1881, 12.1423,
13.6080

0.0000, INF, NaN

0.0000, NaN, NaN

■ 71.8264, 12.5223,
6.5904

■ 71.8264, 12.5223,
6.5904

■ 65.2427, 21.4624,
7.9737

■ 78.8604, 3.8499,
5.5138

■ 59.1904, 30.6024,
9.6988

■ 86.2711, -4.5349,
4.6970

■ 53.7762, 39.7539,
11.7870

■ 94.0054, -12.6526,
4.1006

■ 49.1208, 48.5609,
14.2148

■ 97.2561, -15.0170,
1.9903

■ 45.3494, 56.4599,

16.8830

■ 42.5650, 62.7385,
19.5947

■ 40.8064, 66.7642,
22.0763

■ 39.9254, 68.6063,
23.9938

Harmonies

Analogous

The Analogous color harmony consists of three colors that are next to each other on the color wheel.



71.8280, 11.8008, -1.3651



71.8264, 12.5223, 6.5904



71.8280, 8.7079, 13.0566

Triad

The Triadic color harmony groups three colors that are evenly spaced from another and form a triangle on the color wheel.



71.8280, 12.5199, 6.5916



71.8280, -13.8749, 14.5236



71.8280, -9.1057, -11.8872

Complementary

The Complementary color scheme is a pair of colors which are on the opposite of each other on the color wheel.



71.8264, 12.5223, 6.5904



82.4368, -18.8872, 2.7587

Split Complementary

Split-complementary colors differ from the complementary color scheme. The scheme consists of three colors, the original color and two neighbors of the complement color.



71.8280, -15.5749, -6.6246



71.8264, 12.5223, 6.5904



71.8280, -18.2407, 8.8127

Square

The Square scheme is like the rectangle color scheme, but the four colors are evenly spaced on the color wheel.



71.8280, 12.5199, 6.5916



71.8280, -6.6892, 17.2795



71.8280, -18.8486, 1.1204



71.8280, -0.9383, -12.6564

Rectangle

The Rectangle color scheme consists of four colors that form a rectangle on the color wheel.



71.8264, 12.5223, 6.5904



71.8280, 4.2071, 15.8810



71.8280, -18.8486, 1.1204



71.8280, -11.5409, -10.5591

Sweetspot

The Sweet Spot groups the original color and five complimentary colors.



71.8280, 12.5199, 6.5916



94.7622, 0.4928, 5.9701



72.4775, 17.2147, -12.7282



43.5816, 0.5248, 2.7919

0.0000, NaN, NaN



46.2646, -2.4686, 2.5136

Same Dimension

The Same Dimension uses a secret algorithm to generate beautiful new colors.



71.8280, 12.5199, 6.5916



80.0105, 18.6980, 8.2435



76.3928, 3.0183, 14.0237



37.0542, 1.5431, 2.5477



30.4761, 52.4002, 18.0736



8.0841, 14.0193, 3.8671

Inverse Universe

The Inverse Universe completely reimagines the original color for something new.



71.8280, 12.5199, 6.5916



80.0105, 18.6980, 8.2435



77.3536, -9.6490, -6.5574



37.0542, 1.5431, 2.5477



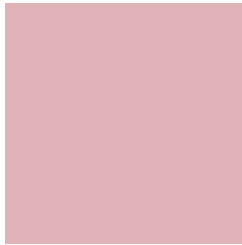
30.4761, 52.4002, 18.0736



8.0841, 14.0193, 3.8671

Previews

White Background



This preview shows how the HunterLab color 71.8264, 12.5223, 6.5904 looks on a white background.

Color Contrast Check

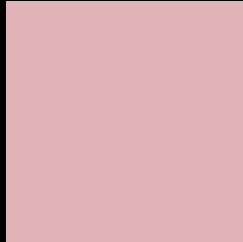
Large Text (above 18pt) WCAG AA × Fail

Any Text WCAG AA × Fail

Large Text (above 18pt) WCAG AAA × Fail

Any Text WCAG AAA × Fail

Black Background



This preview shows how the HunterLab color 71.8264, 12.5223, 6.5904 looks on a black background.

Color Contrast Check

Large Text (above 18pt) WCAG AA ✓ Pass

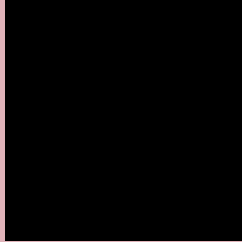
Any Text WCAG AA ✓ Pass

Large Text (above 18pt) WCAG AAA ✓ Pass

Any Text WCAG AAA ✓ Pass

If you want to check with other color combinations, try the [Color Contrast Checker](#).

HunterLab 71.8264, 12.5223, 6.5904 Background



This preview shows how black text looks on a background with the HunterLab color 71.8264, 12.5223, 6.5904.



This preview shows how white text looks on a background with the HunterLab color 71.8264, 12.5223,

6.5904.

Color Blindness Simulation

Color vision deficiency is a very complex topic, and I could not describe the different causes any better than Wikipedia does, so if you want to learn more, you should check out their [article about color blindness](#).

Dichromacy



Original Color

71.8264, 12.5223, 6.5904

Protanopia

72.1511, -2.4035, 3.9130

Deuteranopia

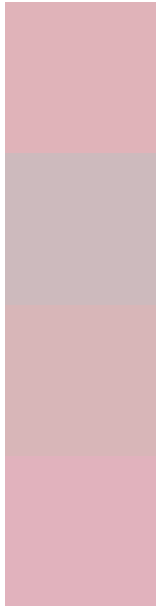
71.8266, 5.1622, 6.9171



Tritanopia

71.8708, 14.5165, 3.4009

Trichromacy



Original Color

71.8264, 12.5223, 6.5904

Protanomaly

71.9521, 2.8904, 4.7154

Deuteranomaly

71.7743, 7.9413, 6.9063

Tritanomaly

71.7792, 14.0375, 4.7084

Monochromacy



Original Color

71.8264, 12.5223, 6.5904

Achromatopsia

73.0258, -3.8965, 3.9676

Achromatomaly

72.4717, 1.6937, 4.8319

CSS Examples

Text

The CSS property to change the color of the text to HunterLab 71.8264, 12.5223, 6.5904 is called "color". The color property can be set on classes, ids or directly on the HTML element.

This example shows how text in the color `rgb(224, 179, 185)` looks like.

```
.text, #text, p{  
    color:rgb(224, 179, 185)  
}
```

If you want to add a text shadow in that color use the text-shadow property, you can generate a text shadow directly with our [CSS Text Shadow Generator](#).

Here you see how black text with a 4 pixel rgb(224, 179, 185) colored shadow looks like.

```
.shadow{ text-shadow: 4px 4px 2px rgb(224, 179, 185) }
```

Border

The CSS property to change the border of an element to HunterLab 71.8264, 12.5223, 6.5904 is called "border". The border property can be set on classes, ids or directly on the HTML element.

This example shows the color as border, it can be applied via the CSS property "border" or "border-color".

```
.border, #border, table{ border:4px solid rgb(224, 179, 185) }
```


If only the border color should be changed use the property `border-color`.

```
.border{ border-color:rgb(224, 179, 185) }
```

If you want to add a box shadow in that color use:

Here you see how a box with a 4 pixel `rgb(224, 179, 185)` colored shadow looks like.

```
.boxshadow{ -moz-box-shadow:4px 4px 4px  
4px rgb(224, 179, 185); -webkit-box-  
shadow:4px 4px 4px 4px rgb(224, 179, 185);  
box-shadow:4px 4px 4px 4px rgb(224, 179,  
185) }
```

Background

The CSS property to change the background color of an element to HunterLab 71.8264, 12.5223, 6.5904 is called "background". The background property can be set on classes, ids or directly on the HTML element.

```
.background, #background, body{  
background: rgb(224, 179, 185) }
```

If only the background color should be changed can be used:

```
.background{ background-color: rgb(224,  
179, 185) }
```

This example shows the color as background, it is applied via the CSS property "background".

To optimize and compress your CSS code, you can use our [online CSS compressor and optimizer](#) based on csstidy. If you want to create a linear or radial gradient as background or border, check our [CSS Gradient Generator](#).

Hey! You found this booklet interesting? Support Converting Colors with the new Membership Option!

The pro membership hides all ads, plus gives you double the colors in the color bucket, and more awesome pro features!

[Learn more, Memberships starting at \\$2.50/m!](#)

**Follow me
on Twitter!**

@ConvertingColor