

Converting Colors

HunterLab(72.0955, 67.9226,
17.0653)

Have a look what the booklet for
HunterLab(72.0955, 67.9226,
17.0653) contains.

HunterLab(63.5664, 46.2985, 7.6606)	3
<i>Conversions</i>	4
<i>Details</i>	6
<i>Harmonies</i>	12
<i>Previews</i>	24
<i>Color Blindness Simulation</i>	28
<i>CSS Examples</i>	31

Color

**HunterLab(63.5664, 46.2985,
7.6606)**

Conversions

Conversions Part 1

Format	Color
Hex	FF84A3
RGB	255, 132, 163
RGB Percent	100%, 52%, 64%
CMY	0.0000, 0.4823, 0.3608
CMYK	0.00, 0.48, 0.36, 0.00
HSL	345°, 100%, 76%
HSV	345°, 48%, 100%
XYZ	56.1021, 40.4069, 39.4927
YIQ	172.3110, 63.3570, 35.7170

Conversions

Conversions Part 2

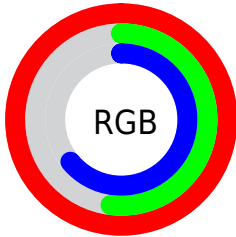
Format	Color
R _Y B	255, 132, 163
Decimal	16745635
CIE Lab	69.76, 49.77, 5.23
CIE LCh	70, 50.044, 5.998
Yxy	40.4089, 0.4125, 0.2971
Android (android.graphics.Color)	4294935715 (0xFFFF84A3)
YUV	172.3110, -4.5903, 72.5183
Hunter-Lab	63.5664, 46.2985, 7.6606

Details

The HunterLab color **63.5664, 46.2985, 7.6606** is a light color, and the websafe version is hex **FF6699**. A complement of this color would be **90.4479, -42.3751, 8.7611**, and the grayscale version is **64.3598, -3.4341, 3.4968**.

A 20% lighter version of the original color is **78.9230, 24.4513, -0.7694**, and **42.6598, 42.9204, 6.1366** is the 20% darker color. If you saturate the color by 10%, you get **58.0382, 56.7474, 9.8316**, and if you desaturate by 10%, it is **69.9475, 35.3877, 6.1734**.

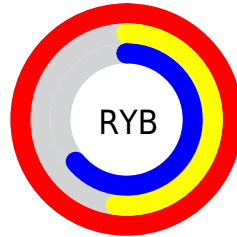
Distribution



Red (100%)

Green (52%)

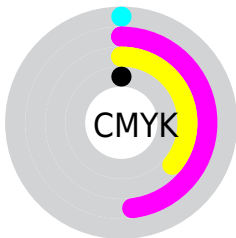
Blue (64%)



Red (100%)

Yellow (52%)

Blue (64%)

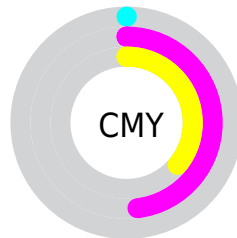


Cyan (0%)

Magenta (48%)

Yellow (36%)

Black (0%)



Cyan (0%)

Magenta (48%)

Yellow (36%)

Brightness & Saturation Gradients

These gradients show how the HunterLab color 63.5664, 46.2985, 7.6606 changes by changing the brightness by 10 percent. The first figure shows a shift by +10% for each color and the second figure -10%.

Similar to the brightness gradients but the following saturation gradients show a change of the HunterLab color 63.5664, 46.2985, 7.6606 by changing the saturation by 10% instead.

63.5664, 46.2985,
7.6606

63.5664, 46.2985,
7.6606

186.5058, 56.5875,
16.2781

52.7802, 44.6814,
6.8035

87.0550, 49.1992,
9.4363

42.6829, 42.9556,
5.9628

99.6895, 50.5021,
10.3535

33.3269, 41.1213,
5.1373

112.8823, 51.7138,
11.2908

24.7764, 39.2016,
4.3229

126.6105, 52.8399,
12.2483

17.1161, 37.2755,
3.5115

140.8541, 53.8857,
13.2260

10.4647, 35.6160,
2.7312

155.5951, 54.8561,

0.0000, INF, NaN

14.2236

0.0000, INF, NaN

170.8173, 55.7554,
15.2411

0.0000, NaN, NaN

■ 63.5664, 46.2985,
7.6606

■ 63.5664, 46.2985,
7.6606

■ 58.0382, 56.7474,
9.8316

■ 69.9475, 35.3877,
6.1734

■ 53.5003, 66.1067,
12.6769

■ 77.0416, 24.4318,
5.3036

■ 50.0768, 73.5551,
16.0718

■ 84.7341, 13.6439,
4.9650

■ 47.8249, 78.3385,
19.7408

■ 92.9298, 3.1171,
5.0697

■ 46.6591, 80.2510,
23.2817

100.0000, -5.3358,
5.4332

■ 46.5114, 80.4544,
23.8362

Harmonies

Analogous

The Analogous color harmony consists of three colors that are next to each other on the color wheel.



63.5680, 41.7714, -15.9292



63.5664, 46.2985, 7.6606



63.5680, 36.0648, 23.4016

Triad

The Triadic color harmony groups three colors that are evenly spaced from another and form a triangle on the color wheel.



63.5680, 46.2947, 7.6619



63.5680, -27.1457, 28.7825



63.5680, -20.2492, -47.5858

Complementary

The Complementary color scheme is a pair of colors which are on the opposite of each other on the color wheel.



63.5664, 46.2985, 7.6606



90.4479, -42.3751, 8.7611

Split Complementary

Split-complementary colors differ from the complementary color scheme. The scheme consists of three colors, the original color and two neighbors of the complement color.



63.5680, -35.0927, -26.2247



63.5664, 46.2985, 7.6606



63.5680, -38.6646, 18.1828

Square

The Square scheme is like the rectangle color scheme, but the four colors are evenly spaced on the color wheel.



63.5680, 46.2947, 7.6619



63.5680, -7.9077, 32.5160



63.5680, -41.3551, -1.0495



63.5680, 1.2468, -53.4920

Rectangle

The Rectangle color scheme consists of four colors that form a rectangle on the color wheel.



63.5664, 46.2985, 7.6606



63.5680, 23.0008, 29.2174



63.5680, -41.3551, -1.0495



63.5680, -26.0824, -41.6811

Sweetspot

The Sweet Spot groups the original color and five complimentary colors.



63.5680, 46.2947, 7.6619



88.1463, 9.1542, 4.9600



62.6786, 51.1836, -49.9747



39.9707, 5.2912, 2.2915

0.0000, NaN, NaN



46.2646, -2.4686, 2.5136

Same Dimension

The Same Dimension uses a secret algorithm to generate beautiful new colors.



63.5680, 46.2947, 7.6619



58.1560, 56.5139, 9.7733



69.5076, 27.5631, 24.6898



42.4996, 2.0543, 2.3292



33.6509, 58.2671, 16.7916



10.5794, 18.4729, 4.0808

Inverse Universe

The Inverse Universe completely reimagines the original color for something new.



63.5680, 46.2947, 7.6619



58.1560, 56.5139, 9.7733



81.6597, -23.0180, -18.7757



42.4996, 2.0543, 2.3292



33.6509, 58.2671, 16.7916



10.5794, 18.4729, 4.0808

Previews

White Background



This preview shows how the HunterLab color 63.5664, 46.2985, 7.6606 looks on a white background.

Color Contrast Check

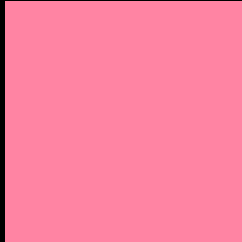
Large Text (above 18pt) WCAG AA × Fail

Any Text WCAG AA × Fail

Large Text (above 18pt) WCAG AAA × Fail

Any Text WCAG AAA × Fail

Black Background



This preview shows how the HunterLab color 63.5664, 46.2985, 7.6606 looks on a black background.

Color Contrast Check

Large Text (above 18pt) WCAG AA ✓ Pass

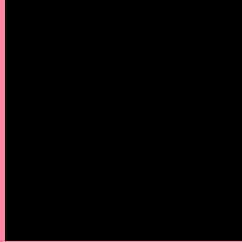
Any Text WCAG AA ✓ Pass

Large Text (above 18pt) WCAG AAA ✓ Pass

Any Text WCAG AAA ✓ Pass

If you want to check with other color combinations, try the [Color Contrast Checker](#).

HunterLab 63.5664, 46.2985, 7.6606 Background



This preview shows how black text looks on a background with the HunterLab color 63.5664, 46.2985, 7.6606.



This preview shows how white text looks on a background with the HunterLab color 63.5664, 46.2985,

Color Blindness Simulation

Color vision deficiency is a very complex topic, and I could not describe the different causes any better than Wikipedia does, so if you want to learn more, you should check out their [article about color blindness](#).

Dichromacy



Original Color

63.5664, 46.2985, 7.6606

Protanopia

63.8735, -0.8078, -3.2608

Deuteranopia

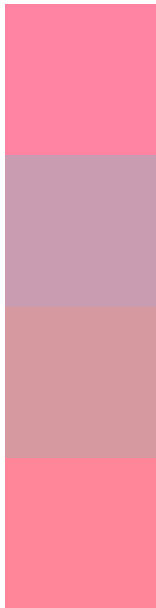
63.7066, 4.4140, 9.2279



Tritanopia

63.4468, 41.6865, 14.7924

Trichromacy



Original Color

63.5664, 46.2985, 7.6606

Protanomaly

62.7445, 15.1200, -0.3773

Deuteranomaly

63.0616, 19.1711, 7.9252

Tritanomaly

63.5516, 43.4500, 12.2071

Monochromacy



Original Color

63.5664, 46.2985, 7.6606

Achromatopsia

64.2295, -3.4271, 3.4897

Achromatomaly

62.8769, 13.6711, 3.5890

CSS Examples

Text

The CSS property to change the color of the text to HunterLab 63.5664, 46.2985, 7.6606 is called "color". The color property can be set on classes, ids or directly on the HTML element.

This example shows how text in the color `rgb(255, 132, 163)` looks like.

```
.text, #text, p{  
    color:rgb(255, 132, 163)  
}
```

If you want to add a text shadow in that color use the text-shadow property, you can generate a text shadow directly with our [CSS Text Shadow Generator](#).

Here you see how black text with a 4 pixel rgb(255, 132, 163) colored shadow looks like.

```
.shadow{ text-shadow: 4px 4px 2px rgb(255, 132, 163) }
```

Border

The CSS property to change the border of an element to HunterLab 63.5664, 46.2985, 7.6606 is called "border". The border property can be set on classes, ids or directly on the HTML element.

This example shows the color as border, it can be applied via the CSS property "border" or "border-color".

```
.border, #border, table{ border:4px solid rgb(255, 132, 163) }
```


If only the border color should be changed use the property `border-color`.

```
.border{ border-color:rgb(255, 132, 163) }
```

If you want to add a box shadow in that color use:

Here you see how a box with a 4 pixel `rgb(255, 132, 163)` colored shadow looks like.

```
.boxshadow{ -moz-box-shadow:4px 4px 4px  
4px rgb(255, 132, 163); -webkit-box-  
shadow:4px 4px 4px 4px rgb(255, 132, 163);  
box-shadow:4px 4px 4px 4px rgb(255, 132,  
163) }
```

Background

The CSS property to change the background color of an element to HunterLab 63.5664, 46.2985, 7.6606 is called "background". The background property can be set on classes, ids or directly on the HTML element.

```
.background, #background, body{  
background: rgb(255, 132, 163) }
```

If only the background color should be changed can be used:

```
.background{ background-color: rgb(255,  
132, 163) }
```

This example shows the color as background, it is applied via the CSS property "background".

To optimize and compress your CSS code, you can use our [online CSS compressor and optimizer](#) based on csstidy. If you want to create a linear or radial gradient as background or border, check our [CSS Gradient Generator](#).

Hey! You found this booklet interesting? Support Converting Colors with the new Membership Option!

The pro membership hides all ads, plus gives you double the colors in the color bucket, and more awesome pro features!

[Learn more, Memberships starting at \\$2.50/m!](#)

**Follow me
on Twitter!**

@ConvertingColor