

Converting Colors

HunterLab(72.1164, 2.8937,
2.8523)

Have a look what the booklet for
HunterLab(72.1164, 2.8937, 2.8523)
contains.

HunterLab(72.2691, 2.7012, 3.1880)	3
<i>Conversions</i>	4
<i>Details</i>	6
<i>Harmonies</i>	12
<i>Previews</i>	24
<i>Color Blindness Simulation</i>	28
<i>CSS Examples</i>	31

Color

**HunterLab(72.2691, 2.7012,
3.1880)**

Conversions

Conversions Part 1

Format	Color
Hex	CCBBC1
RGB	204, 187, 193
RGB Percent	80%, 73%, 76%
CMY	0.2000, 0.2666, 0.2431
CMYK	0.00, 0.08, 0.05, 0.20
HSL	339°, 14%, 77%
HSV	339°, 8%, 80%
XYZ	52.2978, 52.2282, 57.7767
YIQ	192.7670, 8.2060, 5.4700

Conversions

Conversions Part 2

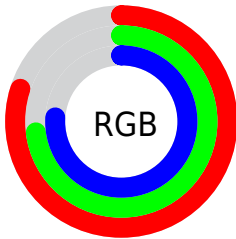
Format	Color
R_YB	204, 187, 193
Decimal	13417409
CIE Lab	77.42, 7.06, -0.85
CIE LCh	77, 7.107, 353.112
Yxy	52.2305, 0.3222, 0.3218
Android (android.graphics.Color)	4291607489 (0xFFCCBBC1)
YUV	192.7670, 0.1149, 9.8513
Hunter-Lab	72.2691, 2.7012, 3.1880

Details

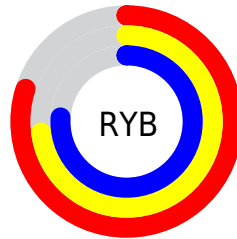
The HunterLab color $72.2691, 2.7012, 3.1880$ is a light color, and the websafe version is hex `CCCCCC`. A complement of this color would be $76.0454, -10.3604, 5.0208$, and the grayscale version is $72.9256, -3.8911, 3.9622$.

A 20% lighter version of the original color is $96.0212, -0.0063, 3.8287$, and $50.4259, 3.2117, 1.9561$ is the 20% darker color. If you saturate the color by 10%, you get $66.0435, 11.0924, 2.2219$, and if you desaturate by 10%, it is $78.8199, -5.5010, 4.4503$.

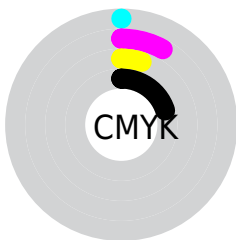
Distribution



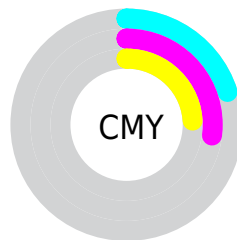
- Red (80%)
- Green (73%)
- Blue (76%)



- Red (80%)
- Yellow (73%)
- Blue (76%)



- Cyan (0%)
- Magenta (8%)
- Yellow (5%)
- Black (20%)



- Cyan (20%)
- Magenta (27%)
- Yellow (24%)

Brightness & Saturation Gradients

These gradients show how the HunterLab color 72.2691, 2.7012, 3.1880 changes by changing the brightness by 10 percent. The first figure shows a shift by +10% for each color and the second figure -10%.

Similar to the brightness gradients but the following saturation gradients show a change of the HunterLab color 72.2691, 2.7012, 3.1880 by changing the saturation by 10% instead.

■ 72.2691, 2.7012,
3.1880

■ 72.2691, 2.7012,
3.1880

198.8280, -1.5069,
9.7820

■ 60.9827, 2.9541,
2.6153

■ 96.6805, 2.0415,
4.4428

■ 50.3525, 3.1532,
2.0797

109.7446, 1.6459,
5.1189

■ 40.4238, 3.2900,
1.5853

123.3494, 1.2097,
5.8257

■ 31.2500, 3.3560,
1.1357

137.4740, 0.7354,
6.5621

■ 22.8994, 3.3390,
0.7357

152.1001, 0.2249,
7.3269

■ 15.4630, 3.2212,
0.3921

167.2110, -0.3200,

■ 9.0624, 3.0062,

8.1191

0.1034

182.7915, -0.8977,
8.9377

0.0000, NaN, NaN

0.0000, NaN, NaN

■ 72.2691, 2.7012,
3.1880

■ 72.2691, 2.7012,
3.1880

■ 66.0435, 11.0924,
2.2219

■ 78.8199, -5.5010,
4.4503

■ 60.1943, 19.6525,
1.6181

■ 85.6464, -13.5115,
5.9497

■ 54.7925, 28.2994,
1.4631

■ 92.7143, -21.3494,
7.6443

■ 49.9223, 36.8606,
1.8530

■ 95.3938, -22.3563,
4.2934

■ 45.6806, 45.0266,

■ 95.6961, -20.6482,

2.8813

-0.0096

■ 42.1697, 52.3215,
4.6081

■ 39.4785, 58.1414,
7.0147

■ 37.6525, 61.9210,
9.9585

■ 36.6172, 63.5462,
13.1352

Harmonies

Analogous

The Analogous color harmony consists of three colors that are next to each other on the color wheel.



72.2707, 1.4064, 0.1275



72.2691, 2.7012, 3.1880



72.2707, 2.2089, 6.3165

Triad

The Triadic color harmony groups three colors that are evenly spaced from another and form a triangle on the color wheel.



72.2707, 2.6993, 3.1892



72.2707, -6.3909, 9.3870



72.2707, -7.7161, -1.1823

Complementary

The Complementary color scheme is a pair of colors which are on the opposite of each other on the color wheel.



72.2691, 2.7012, 3.1880



76.0454, -10.3604, 5.0208

Split Complementary

Split-complementary colors differ from the complementary color scheme. The scheme consists of three colors, the original color and two neighbors of the complement color.



72.2707, -9.7351, 1.4673



72.2691, 2.7012, 3.1880



72.2707, -8.9799, 7.5439

Square

The Square scheme is like the rectangle color scheme, but the four colors are evenly spaced on the color wheel.



72.2707, 2.6993, 3.1892



72.2707, -3.0797, 9.8008



72.2707, -10.1935, 4.6707



72.2707, -4.6371, -2.4703

Rectangle

The Rectangle color scheme consists of four colors that form a rectangle on the color wheel.



72.2691, 2.7012, 3.1880



72.2707, 0.9410, 8.0288



72.2707, -10.1935, 4.6707



72.2707, -8.5390, -0.4157

Sweetspot

The Sweet Spot groups the original color and five complimentary colors.



72.2707, 2.6993, 3.1892



98.2743, -3.2095, 5.0883



72.0255, 2.5746, -2.5993



45.5056, -1.5337, 2.3618

0.0000, NaN, NaN



46.2646, -2.4686, 2.5136

Same Dimension

The Same Dimension uses a secret algorithm to generate beautiful new colors.



72.2707, 2.6993, 3.1892



91.5303, 5.3986, 3.8500



72.7581, 0.5612, 6.5298



33.5827, 1.6809, 1.4407



28.9662, 50.6769, 10.4111



6.6872, 11.9059, 0.8028

Inverse Universe

The Inverse Universe completely reimagines the original color for something new.



72.2707, 2.6993, 3.1892



91.5303, 5.3986, 3.8500



75.5261, -8.2037, 1.5486



33.5827, 1.6809, 1.4407



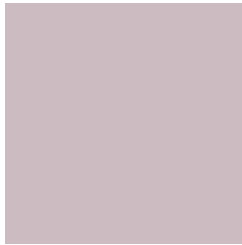
28.9662, 50.6769, 10.4111



6.6872, 11.9059, 0.8028

Previews

White Background



This preview shows how the HunterLab color 72.2691, 2.7012, 3.1880 looks on a white background.

Color Contrast Check

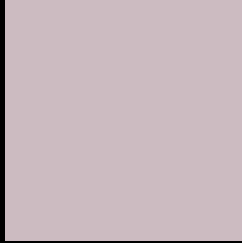
Large Text (above 18pt) WCAG AA × Fail

Any Text WCAG AA × Fail

Large Text (above 18pt) WCAG AAA × Fail

Any Text WCAG AAA × Fail

Black Background



This preview shows how the HunterLab color 72.2691, 2.7012, 3.1880 looks on a black background.

Color Contrast Check

Large Text (above 18pt) WCAG AA ✓ Pass

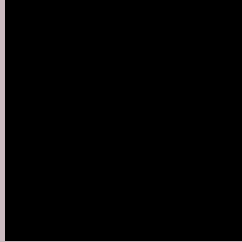
Any Text WCAG AA ✓ Pass

Large Text (above 18pt) WCAG AAA ✓ Pass

Any Text WCAG AAA ✓ Pass

If you want to check with other color combinations, try the [Color Contrast Checker](#).

HunterLab 72.2691, 2.7012, 3.1880 Background



This preview shows how black text looks on a background with the HunterLab color 72.2691, 2.7012, 3.1880.



This preview shows how white text looks on a background with the HunterLab color 72.2691, 2.7012,

3.1880.

Color Blindness Simulation

Color vision deficiency is a very complex topic, and I could not describe the different causes any better than Wikipedia does, so if you want to learn more, you should check out their [article about color blindness](#).

Dichromacy



Original Color

72.2691, 2.7012, 3.1880

Protanopia

72.2747, -1.7294, 2.1510

Deuteranopia

72.1827, 5.4088, 3.1327



Tritanopia

72.2960, 4.7376, -0.1819

Trichromacy



Original Color

72.2691, 2.7012, 3.1880

Protanomaly

72.3160, -0.1152, 2.7132

Deuteranomaly

72.2727, 4.2169, 3.2188

Tritanomaly

72.1998, 4.2221, 1.1850

Monochromacy



Original Color

72.2691, 2.7012, 3.1880

Achromatopsia

73.0258, -3.8965, 3.9676

Achromatomaly

72.7889, -1.6208, 3.7282

CSS Examples

Text

The CSS property to change the color of the text to HunterLab 72.2691, 2.7012, 3.1880 is called "color". The color property can be set on classes, ids or directly on the HTML element.

This example shows how text in the color `rgb(204, 187, 193)` looks like.

```
.text, #text, p{  
    color:rgb(204, 187, 193)  
}
```

If you want to add a text shadow in that color use the text-shadow property, you can generate a text shadow directly with our [CSS Text Shadow Generator](#).

Here you see how black text with a 4 pixel rgb(204, 187, 193) colored shadow looks like.

```
.shadow{ text-shadow: 4px 4px 2px rgb(204, 187, 193) }
```

Border

The CSS property to change the border of an element to HunterLab 72.2691, 2.7012, 3.1880 is called "border". The border property can be set on classes, ids or directly on the HTML element.

This example shows the color as border, it can be applied via the CSS property "border" or "border-color".

```
.border, #border, table{ border:4px solid rgb(204, 187, 193) }
```


If only the border color should be changed use the property `border-color`.

```
.border{ border-color:rgb(204, 187, 193) }
```

If you want to add a box shadow in that color use:

Here you see how a box with a 4 pixel `rgb(204, 187, 193)` colored shadow looks like.

```
.boxshadow{ -moz-box-shadow:4px 4px 4px  
4px rgb(204, 187, 193); -webkit-box-  
shadow:4px 4px 4px 4px rgb(204, 187, 193);  
box-shadow:4px 4px 4px 4px rgb(204, 187,  
193) }
```

Background

The CSS property to change the background color of an element to HunterLab 72.2691, 2.7012, 3.1880 is called "background". The background property can be set on classes, ids or directly on the HTML element.

```
.background, #background, body{  
background: rgb(204, 187, 193) }
```

If only the background color should be changed can be used:

```
.background{ background-color: rgb(204,  
187, 193) }
```

This example shows the color as background, it is applied via the CSS property "background".

To optimize and compress your CSS code, you can use our [online CSS compressor and optimizer](#) based on csstidy. If you want to create a linear or radial gradient as background or border, check our [CSS Gradient Generator](#).

Hey! You found this booklet interesting? Support Converting Colors with the new Membership Option!

The pro membership hides all ads, plus gives you double the colors in the color bucket, and more awesome pro features!

[Learn more, Memberships starting at \\$2.50/m!](#)

**Follow me
on Twitter!**

@ConvertingColor