

Converting Colors

HunterLab(72.1764, 5.9910,
9.9801)

Have a look what the booklet for
HunterLab(72.1764, 5.9910, 9.9801)
contains.

HunterLab(72.1764, 5.9910, 9.9801)	3
<i>Conversions</i>	4
<i>Details</i>	6
<i>Harmonies</i>	12
<i>Previews</i>	24
<i>Color Blindness Simulation</i>	28
<i>CSS Examples</i>	31

Color

**HunterLab(72.1764, 5.9910,
9.9801)**

Conversions

Conversions Part 1

Format	Color
Hex	D8B8B2
RGB	216, 184, 178
RGB Percent	85%, 72%, 70%
CMY	0.1529, 0.2784, 0.3020
CMYK	0.00, 0.15, 0.18, 0.15
HSL	9°, 33%, 77%
HSV	9°, 18%, 85%
XYZ	53.4953, 52.0943, 49.3553
YIQ	192.8840, 20.9980, 4.9180

Conversions

Conversions Part 2

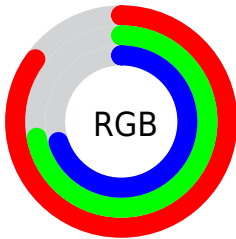
Format	Color
R _Y B	216, 185, 178
Decimal	14203058
CIE Lab	77.34, 10.50, 7.29
CIE LCh	77, 12.788, 34.774
Yxy	52.0967, 0.3453, 0.3362
Android (android.graphics.Color)	4292393138 (0xFFD8B8B2)
YUV	192.8840, -7.3378, 20.2727
Hunter-Lab	72.1764, 5.9910, 9.9801

Details

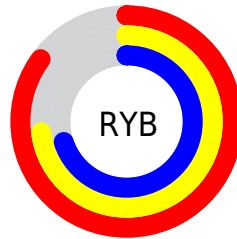
The HunterLab color $72.1764, 5.9910, 9.9801$ is a light color, and the websafe version is hex FFCCCC . A complement of this color would be $77.7912, -12.6825, -1.8027$, and the grayscale version is $73.0019, -3.8952, 3.9663$.

A 20% lighter version of the original color is $94.6154, -0.9697, 9.5055$, and $50.2895, 6.1103, 8.2206$ is the 20% darker color. If you saturate the color by 10%, you get $66.4976, 12.3608, 12.9893$, and if you desaturate by 10%, it is $78.1550, -0.0473, 6.8891$.

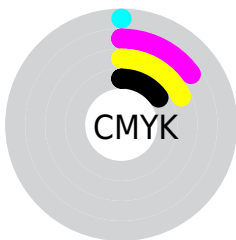
Distribution



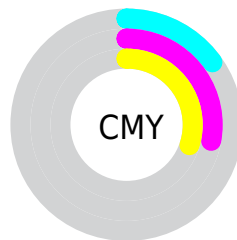
- Red (85%)
- Green (72%)
- Blue (70%)



- Red (85%)
- Yellow (73%)
- Blue (70%)



- Cyan (0%)
- Magenta (15%)
- Yellow (18%)
- Black (15%)





- Cyan (15%)
- Magenta (28%)
- Yellow (30%)

Brightness & Saturation Gradients


These gradients show how the HunterLab color 72.1764, 5.9910, 9.9801 changes by changing the brightness by 10 percent. The first figure shows a shift by +10% for each color and the second figure -10%.

Similar to the brightness gradients but the following saturation gradients show a change of the HunterLab color 72.1764, 5.9910, 9.9801 by changing the saturation by 10% instead.


 72.1764, 5.9910,
9.9801

 72.1764, 5.9910,
9.9801

198.6982, 3.0090,
19.4912

 60.8951, 6.0780,
9.0022


 96.5784, 5.6395,
11.9807

 50.2704, 6.1024,
8.0343


109.6381, 5.3887,
13.0034

 40.3474, 6.0538,
7.0741


123.2386, 5.0921,
14.0425

 31.1800, 5.9214,
6.1165

137.3592, 4.7524,
15.0982

 22.8363, 5.6902,
5.1522

151.9813, 4.3722,
16.1708

 15.4076, 5.3384,
4.1648

167.0884, 3.9537,

 9.0135, 4.8769,

17.2605

3.8447

182.6653, 3.4987,
18.3673

0.0000, NaN, NaN

0.0000, NaN, NaN

■ 72.1764, 5.9910,
9.9801

■ 72.1764, 5.9910,
9.9801

■ 66.4976, 12.3608,
12.9893

■ 78.1550, -0.0473,
6.8891

■ 61.1612, 19.0782,
15.8718

■ 84.3898, -5.7739,
3.7398

■ 56.2259, 26.1160,
18.5664

■ 90.8504, -11.2244,
0.5500

■ 51.7588, 33.3886,
20.9839

■ 96.6121, -17.3300,
1.1686

■ 47.8352, 40.7174,

23.0065

■ 44.5330, 47.8023,
24.4969

■ 41.9206, 54.2215,
25.3310

■ 40.0366, 59.4843,
25.4906

■ 39.6868, 60.5087,
25.5141

Harmonies

Analogous

The Analogous color harmony consists of three colors that are next to each other on the color wheel.



72.1780, 8.1534, 4.8472



72.1764, 5.9910, 9.9801



72.1780, 1.1890, 13.2722

Triad

The Triadic color harmony groups three colors that are evenly spaced from another and form a triangle on the color wheel.



72.1780, 5.9887, 9.9813



72.1780, -14.1174, 8.5042



72.1780, -2.8807, -8.0399

Complementary

The Complementary color scheme is a pair of colors which are on the opposite of each other on the color wheel.



72.1764, 5.9910, 9.9801



77.7912, -12.6825, -1.8027

Split Complementary

Split-complementary colors differ from the complementary color scheme. The scheme consists of three colors, the original color and two neighbors of the complement color.



72.1780, -8.7644, -6.8591



72.1764, 5.9910, 9.9801



72.1780, -15.1265, 2.9982

Square

The Square scheme is like the rectangle color scheme, but the four colors are evenly spaced on the color wheel.



72.1780, 5.9887, 9.9813



72.1780, -10.3948, 12.4702



72.1780, -13.1981, -2.6978



72.1780, 2.9260, -5.8035

Rectangle

The Rectangle color scheme consists of four colors that form a rectangle on the color wheel.



72.1764, 5.9910, 9.9801



72.1780, -2.7885, 14.1381



72.1780, -13.1981, -2.6978



72.1780, -4.9155, -8.0310

Sweetspot

The Sweet Spot groups the original color and five complimentary colors.



72.1780, 5.9887, 9.9813



96.2011, -1.8498, 7.3518



71.4903, 14.4910, -6.4248



44.2628, -0.6258, 3.5255

0.0000, NaN, NaN



46.2646, -2.4686, 2.5136

Same Dimension

The Same Dimension uses a secret algorithm to generate beautiful new colors.



72.1780, 5.9887, 9.9813



84.5857, 9.9514, 13.3676



77.7073, -3.5827, 15.6827



35.6854, 0.4769, 3.4544



30.6997, 46.0142, 19.7225



8.1846, 9.3475, 5.2069

Inverse Universe

The Inverse Universe completely reimagines the original color for something new.



77.7912, -12.6825, -1.8027



92.7038, -17.0912, -3.6832



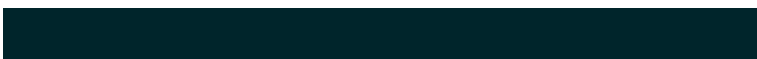
71.9835, -3.3437, -9.2128



37.0919, -4.1915, 0.5039



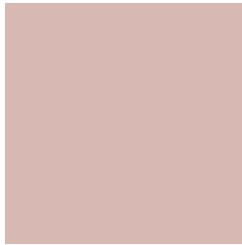
47.7885, -19.0563, -18.5944



12.1214, -5.1811, -3.9662

Previews

White Background



This preview shows how the HunterLab color 72.1764, 5.9910, 9.9801 looks on a white background.

Color Contrast Check

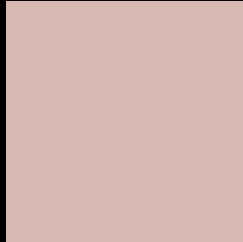
Large Text (above 18pt) WCAG AA × Fail

Any Text WCAG AA × Fail

Large Text (above 18pt) WCAG AAA × Fail

Any Text WCAG AAA × Fail

Black Background



This preview shows how the HunterLab color 72.1764, 5.9910, 9.9801 looks on a black background.

Color Contrast Check

Large Text (above 18pt) WCAG AA ✓ Pass

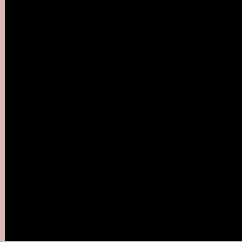
Any Text WCAG AA ✓ Pass

Large Text (above 18pt) WCAG AAA ✓ Pass

Any Text WCAG AAA ✓ Pass

If you want to check with other color combinations, try the [Color Contrast Checker](#).

HunterLab 72.1764, 5.9910, 9.9801 Background



This preview shows how black text looks on a background with the HunterLab color 72.1764, 5.9910, 9.9801.



This preview shows how white text looks on a background with the HunterLab color 72.1764, 5.9910,

Color Blindness Simulation

Color vision deficiency is a very complex topic, and I could not describe the different causes any better than Wikipedia does, so if you want to learn more, you should check out their [article about color blindness](#).

Dichromacy



Original Color

72.1764, 5.9910, 9.9801

Protanopia

72.1342, -3.0518, 8.4633

Deuteranopia

72.3598, 5.1223, 10.1656



Tritanopia

72.0370, 10.9321, 2.0864

Trichromacy



Original Color

72.1764, 5.9910, 9.9801

Protanomaly

72.1797, 0.1131, 9.0098

Deuteranomaly

72.3598, 5.1223, 10.1656

Tritanomaly

72.0290, 9.0802, 4.9135

Monochromacy



Original Color

72.1764, 5.9910, 9.9801

Achromatopsia

73.0258, -3.8965, 3.9676

Achromatomaly

72.7154, -0.6396, 6.0028

CSS Examples

Text

The CSS property to change the color of the text to HunterLab 72.1764, 5.9910, 9.9801 is called "color". The color property can be set on classes, ids or directly on the HTML element.

This example shows how text in the color `rgb(216, 184, 178)` looks like.

```
.text, #text, p{  
    color:rgb(216, 184, 178)  
}
```

If you want to add a text shadow in that color use the text-shadow property, you can generate a text shadow directly with our [CSS Text Shadow Generator](#).

Here you see how black text with a 4 pixel rgb(216, 184, 178) colored shadow looks like.

```
.shadow{ text-shadow: 4px 4px 2px rgb(216, 184, 178) }
```

Border

The CSS property to change the border of an element to HunterLab 72.1764, 5.9910, 9.9801 is called "border".

The border property can be set on classes, ids or directly on the HTML element.

This example shows the color as border, it can be applied via the CSS property "border" or "border-color".

```
.border, #border, table{ border:4px solid rgb(216, 184, 178) }
```


If only the border color should be changed use the property `border-color`.

```
.border{ border-color:rgb(216, 184, 178) }
```

If you want to add a box shadow in that color use:

Here you see how a box with a 4 pixel `rgb(216, 184, 178)` colored shadow looks like.

```
.boxshadow{ -moz-box-shadow:4px 4px 4px  
4px rgb(216, 184, 178); -webkit-box-  
shadow:4px 4px 4px 4px rgb(216, 184, 178);  
box-shadow:4px 4px 4px 4px rgb(216, 184,  
178) }
```

Background

The CSS property to change the background color of an element to HunterLab 72.1764, 5.9910, 9.9801 is called "background". The background property can be set on classes, ids or directly on the HTML element.

```
.background, #background, body{  
background: rgb(216, 184, 178) }
```

If only the background color should be changed can be used:

```
.background{ background-color: rgb(216,  
184, 178) }
```

This example shows the color as background, it is applied via the CSS property "background".

To optimize and compress your CSS code, you can use our [online CSS compressor and optimizer](#) based on csstidy. If you want to create a linear or radial gradient as background or border, check our [CSS Gradient Generator](#).

Hey! You found this booklet interesting? Support Converting Colors with the new Membership Option!

The pro membership hides all ads, plus gives you double the colors in the color bucket, and more awesome pro features!

[Learn more, Memberships starting at \\$2.50/m!](#)

**Follow me
on Twitter!**

@ConvertingColor