

Converting Colors

HunterLab(72.2124, 0.7896,
16.4453)

Have a look what the booklet for
HunterLab(72.2124, 0.7896,
16.4453) contains.

| | |
|--|----|
| HunterLab(72.2124, 0.7896, 16.4453) | 3 |
| <i>Conversions</i> | 4 |
| <i>Details</i> | 6 |
| <i>Harmonies</i> | 12 |
| <i>Previews</i> | 24 |
| <i>Color Blindness Simulation</i> | 28 |
| <i>CSS Examples</i> | 31 |

Color

**HunterLab(72.2124, 0.7896,
16.4453)**

Conversions

Conversions Part 1

| Format | Color |
|---------------|----------------------------|
| Hex | D4BBA2 |
| RGB | 212, 187, 162 |
| RGB Percent | 83%, 73%, 64% |
| CMY | 0.1686, 0.2666, 0.3647 |
| CMYK | 0.00, 0.12, 0.24, 0.17 |
| HSL | 30°, 37%, 73% |
| HSV | 30°, 24%, 83% |
| XYZ | 51.4433, 52.1463, 41.5363 |
| YIQ | 191.6250, 22.9250, -2.4750 |

Conversions

Conversions Part 2

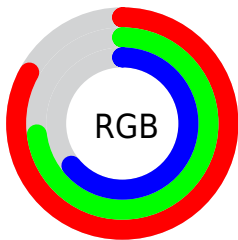
| Format | Color |
|-------------------------------------|--|
| RYB | 212, 212, 162 |
| Decimal | 13941666 |
| CIELab | 77.37, 5.02, 15.93 |
| CIELCh | 77, 16.703, 72.502 |
| Yxy | 52.1487, 0.3545, 0.3593 |
| Android (android.graphics.Color) | 4292131746 (0xFFD4BBA2) |
| YUV | 191.6250, -14.6051, 17.8689 |
| Hunter-Lab | 72.2124, 0.7896, 16.4453 |

Details

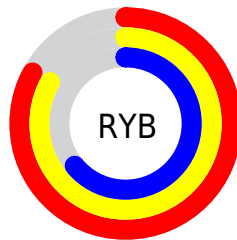
The HunterLab color $72.2124, 0.7896, 16.4453$ is a light color, and the websafe version is hex `CCCC99`. A complement of this color would be $69.2634, -6.3903, -10.7507$, and the grayscale version is $72.4984, -3.8683, 3.9390$.

A 20% lighter version of the original color is $95.0636, -5.2275, 17.5439$, and $50.3429, 1.4078, 13.6721$ is the 20% darker color. If you saturate the color by 10%, you get $68.6475, 3.5074, 20.6642$, and if you desaturate by 10%, it is $75.9154, -1.5947, 11.6762$.

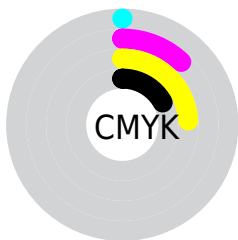
Distribution



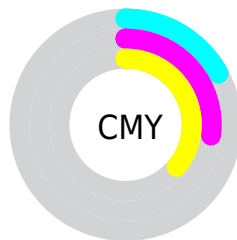
- Red (83%)
- Green (73%)
- Blue (64%)



- Red (83%)
- Yellow (83%)
- Blue (64%)



- Cyan (0%)
- Magenta (12%)
- Yellow (24%)
- Black (17%)





- Cyan (17%)
- Magenta (27%)
- Yellow (36%)

Brightness & Saturation Gradients


These gradients show how the HunterLab color 72.2124, 0.7896, 16.4453 changes by changing the brightness by 10 percent. The first figure shows a shift by +10% for each color and the second figure -10%.


Similar to the brightness gradients but the following saturation gradients show a change of the HunterLab color 72.2124, 0.7896, 16.4453 by changing the saturation by 10% instead.

 72.2124, 0.7896,
16.4453

 72.2124, 0.7896,
16.4453


198.7487, -4.1465,
29.2527

 60.9291, 1.1408,
14.9985

 96.6180, -0.0541,
19.3004

 50.3023, 1.4442,
13.5264


 109.6795, -0.5357,
20.7171

 40.3771, 1.6921,
12.0179


123.2817, -1.0546,
22.1320

 31.2072, 1.8773,
10.4552

137.4038, -1.6088,
23.5476

 22.8608, 1.9898,
8.8100

152.0275, -2.1965,
24.9659

 15.4291, 2.0149,
7.0342

167.1360, -2.8163,

 9.0325, 1.9654,

26.3888

6.3228

182.7143, -3.4667,
27.8173

0.0000, NaN, NaN

0.0000, NaN, NaN

■ 72.2124, 0.7896,
16.4453

■ 72.2124, 0.7896,
16.4453

■ 68.6475, 3.5074,
20.6642

■ 75.9154, -1.5947,
11.6762

■ 65.2277, 6.5862,
24.2716

■ 79.7409, -3.6611,
6.4083

■ 61.9673, 10.0388,
27.2084

■ 83.6809, -5.4356,
0.6920

■ 58.8798, 13.8722,
29.4167

■ 87.7265, -6.9414,
-5.4284

■ 55.9793, 18.0800,

■ 91.3975, -10.8131,

30.8479

-5.2431

■ 53.2791, 22.6363,
31.4743

■ 94.8463, -16.2271,
-0.9811

■ 50.7912, 27.4872,
31.3099

■ 96.3001, -18.4566,
0.7685

■ 49.3042, 30.6830,
30.9181

Harmonies

Analogous

The Analogous color harmony consists of three colors that are next to each other on the color wheel.



72.2140, 7.7373, 13.0637



72.2124, 0.7896, 16.4453



72.2140, -7.1296, 16.7115

Triad

The Triadic color harmony groups three colors that are evenly spaced from another and form a triangle on the color wheel.



72.2140, 0.7873, 16.4463



72.2140, -18.1548, 0.7185



72.2140, 6.7409, -7.6072

Complementary

The Complementary color scheme is a pair of colors which are on the opposite of each other on the color wheel.



72.2124, 0.7896, 16.4453



69.2634, -6.3903, -10.7507

Split Complementary

Split-complementary colors differ from the complementary color scheme. The scheme consists of three colors, the original color and two neighbors of the complement color.



72.2140, -0.5251, -11.7202



72.2124, 0.7896, 16.4453



72.2140, -14.7631, -6.5766

Square

The Square scheme is like the rectangle color scheme, but the four colors are evenly spaced on the color wheel.



72.2140, 0.7873, 16.4463



72.2140, -17.8376, 8.1594



72.2140, -8.3868, -11.3238



72.2140, 11.2753, -0.5700

Rectangle

The Rectangle color scheme consists of four colors that form a rectangle on the color wheel.



72.2124, 0.7896, 16.4453



72.2140, -11.8723, 15.1297



72.2140, -8.3868, -11.3238



72.2140, 4.5238, -9.4100

Sweetspot

The Sweet Spot groups the original color and five complimentary colors.



72.2140, 0.7873, 16.4463



96.6133, -3.6657, 10.2292



65.8985, 17.5176, -1.3864



44.5642, -1.6253, 4.9177

0.0000, NaN, NaN



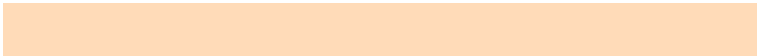
46.2646, -2.4686, 2.5136

Same Dimension

The Same Dimension uses a secret algorithm to generate beautiful new colors.



72.2140, 0.7873, 16.4463



86.9062, 2.4963, 22.8073



79.8079, -11.6915, 23.5776



36.6560, -1.1782, 4.5145



38.9969, 23.5080, 24.4412



10.4058, 3.9494, 6.4811

Inverse Universe

The Inverse Universe completely reimagines the original color for something new.



69.2634, -6.3903, -10.7507



82.5697, -8.0224, -17.1955



61.8678, 6.2874, -21.4596



36.0890, -2.5641, -0.7047



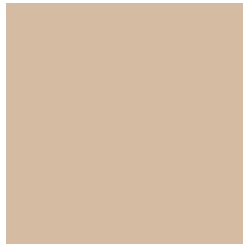
30.8161, 7.5716, -54.8623



8.5926, -0.0144, -10.7090

Previews

White Background



This preview shows how the HunterLab color 72.2124, 0.7896, 16.4453 looks on a white background.

Color Contrast Check

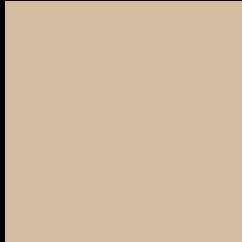
Large Text (above 18pt) WCAG AA × Fail

Any Text WCAG AA × Fail

Large Text (above 18pt) WCAG AAA × Fail

Any Text WCAG AAA × Fail

Black Background



This preview shows how the HunterLab color 72.2124, 0.7896, 16.4453 looks on a black background.

Color Contrast Check

Large Text (above 18pt) WCAG AA ✓ Pass

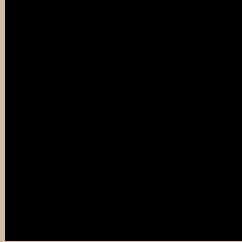
Any Text WCAG AA ✓ Pass

Large Text (above 18pt) WCAG AAA ✓ Pass

Any Text WCAG AAA ✓ Pass

If you want to check with other color combinations, try the [Color Contrast Checker](#).

HunterLab 72.2124, 0.7896, 16.4453 Background



This preview shows how black text looks on a background with the HunterLab color 72.2124, 0.7896, 16.4453.



This preview shows how white text looks on a background with the HunterLab color 72.2124, 0.7896,

Color Blindness Simulation

Color vision deficiency is a very complex topic, and I could not describe the different causes any better than Wikipedia does, so if you want to learn more, you should check out their [article about color blindness](#).

Dichromacy



Original Color

72.2124, 0.7896, 16.4453

Protanopia

72.3598, -4.7209, 15.7270

Deuteranopia

72.2087, 5.3097, 16.1365



Tritanopia

72.1390, 9.8746, 1.7020

Trichromacy



Original Color

72.2124, 0.7896, 16.4453

Protanomaly

72.4226, -3.0089, 16.2067

Deuteranomaly

72.1762, 3.7160, 16.0757

Tritanomaly

72.2418, 6.5506, 7.4124

Monochromacy



Original Color

72.2124, 0.7896, 16.4453

Achromatopsia

72.6027, -3.8739, 3.9446

Achromatomaly

72.3223, -2.4002, 8.6842

CSS Examples

Text

The CSS property to change the color of the text to HunterLab 72.2124, 0.7896, 16.4453 is called "color". The color property can be set on classes, ids or directly on the HTML element.

This example shows how text in the color `rgb(212, 187, 162)` looks like.

```
.text, #text, p{  
    color:rgb(212, 187, 162)  
}
```

If you want to add a text shadow in that color use the text-shadow property, you can generate a text shadow directly with our [CSS Text Shadow Generator](#).

Here you see how black text with a 4 pixel rgb(212, 187, 162) colored shadow looks like.

```
.shadow{ text-shadow: 4px 4px 2px rgb(212, 187, 162) }
```

Border

The CSS property to change the border of an element to HunterLab 72.2124, 0.7896, 16.4453 is called "border". The border property can be set on classes, ids or directly on the HTML element.

This example shows the color as border, it can be applied via the CSS property "border" or "border-color".

```
.border, #border, table{ border:4px solid rgb(212, 187, 162) }
```


If only the border color should be changed use the property `border-color`.

```
.border{ border-color:rgb(212, 187, 162) }
```

If you want to add a box shadow in that color use:

Here you see how a box with a 4 pixel `rgb(212, 187, 162)` colored shadow looks like.

```
.boxshadow{ -moz-box-shadow:4px 4px 4px  
4px rgb(212, 187, 162); -webkit-box-  
shadow:4px 4px 4px 4px rgb(212, 187, 162);  
box-shadow:4px 4px 4px 4px rgb(212, 187,  
162) }
```

Background

The CSS property to change the background color of an element to HunterLab 72.2124, 0.7896, 16.4453 is called "background". The background property can be set on classes, ids or directly on the HTML element.

```
.background, #background, body{  
background: rgb(212, 187, 162) }
```

If only the background color should be changed can be used:

```
.background{ background-color: rgb(212,  
187, 162) }
```

This example shows the color as background, it is applied via the CSS property "background".

To optimize and compress your CSS code, you can use our [online CSS compressor and optimizer](#) based on csstidy. If you want to create a linear or radial gradient as background or border, check our [CSS Gradient Generator](#).

Hey! You found this booklet interesting? Support Converting Colors with the new Membership Option!

The pro membership hides all ads, plus gives you double the colors in the color bucket, and more awesome pro features!

[Learn more, Memberships starting at \\$2.50/m!](#)

**Follow me
on Twitter!**

@ConvertingColor