

Converting Colors

HunterLab(72.2188, 4.3764,
3.7556)

Have a look what the booklet for
HunterLab(72.2188, 4.3764, 3.7556)
contains.

HunterLab(72.3419, 4.3882, 3.7817)	3
<i>Conversions</i>	4
<i>Details</i>	6
<i>Harmonies</i>	12
<i>Previews</i>	24
<i>Color Blindness Simulation</i>	28
<i>CSS Examples</i>	31

Color

**HunterLab(72.3419, 4.3882,
3.7817)**

Conversions

Conversions Part 1

Format	Color
Hex	D0BAC0
RGB	208, 186, 192
RGB Percent	82%, 73%, 75%
CMY	0.1843, 0.2706, 0.2471
CMYK	0.00, 0.11, 0.08, 0.18
HSL	344°, 19%, 77%
HSV	344°, 11%, 82%
XYZ	53.0858, 52.3335, 57.1727
YIQ	193.2620, 11.1860, 6.5300

Conversions

Conversions Part 2

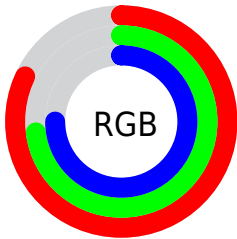
Format	Color
R_{YB}	208, 186, 192
Decimal	13679296
CIE Lab	77.48, 8.83, -0.18
CIE LCh	77, 8.835, 358.845
Yxy	52.3358, 0.3265, 0.3219
Android (android.graphics.Color)	4291869376 (0xFFD0BAC0)
YUV	193.2620, -0.6222, 12.9252
Hunter-Lab	72.3419, 4.3882, 3.7817

Details

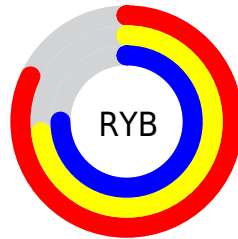
The HunterLab color $72.3419, 4.3882, 3.7817$ is a light color, and the websafe version is hex `CCCCCC`. A complement of this color would be $77.3411, -11.9445, 4.6103$, and the grayscale version is $73.1373, -3.9024, 3.9737$.

A 20% lighter version of the original color is $95.6774, 0.3522, 3.9296$, and $50.5066, 4.8248, 2.5325$ is the 20% darker color. If you saturate the color by 10%, you get $66.0027, 12.7610, 3.5895$, and if you desaturate by 10%, it is $79.0270, -3.7750, 4.2786$.

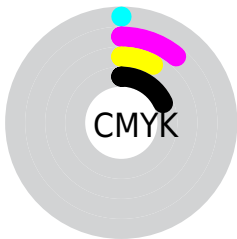
Distribution



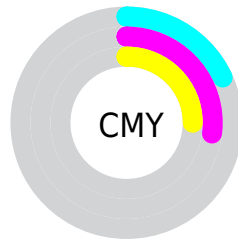
- Red (82%)
- Green (73%)
- Blue (75%)



- Red (82%)
- Yellow (73%)
- Blue (75%)



- Cyan (0%)
- Magenta (11%)
- Yellow (8%)
- Black (18%)



- Cyan (18%)
- Magenta (27%)
- Yellow (25%)

Brightness & Saturation Gradients

These gradients show how the HunterLab color 72.3419, 4.3882, 3.7817 changes by changing the brightness by 10 percent. The first figure shows a shift by +10% for each color and the second figure -10%.

Similar to the brightness gradients but the following saturation gradients show a change of the HunterLab color 72.3419, 4.3882, 3.7817 by changing the saturation by 10% instead.

■ 72.3419, 4.3882,
3.7817

■ 72.3419, 4.3882,
3.7817

198.9300, 0.8103,
10.6114

■ 61.0515, 4.5559,
3.1768

■ 96.7607, 3.8870,
5.0963

■ 50.4170, 4.6651,
2.6069

109.8283, 3.5659,
5.8002

■ 40.4838, 4.7065,
2.0759

123.4364, 3.2014,
6.5339

■ 31.3051, 4.6703,
1.5867

137.5642, 2.7963,
7.2961

■ 22.9491, 4.5429,
1.1434

152.1934, 2.3528,
8.0859

■ 15.5065, 4.3042,
0.7512

167.3072, 1.8728,

■ 9.1006, 3.9489,

8.9022

0.4143

182.8907, 1.3581,
9.7443

0.0000, NaN, NaN

0.0000, NaN, NaN

■ 72.3419, 4.3882,
3.7817

■ 72.3419, 4.3882,
3.7817

■ 66.0027, 12.7610,
3.5895

■ 79.0270, -3.7750,
4.2786

■ 60.0657, 21.3212,
3.7630

■ 86.0045, -11.7264,
5.0225

■ 54.6085, 29.9769,
4.3770

■ 93.2371, -19.4875,
5.9715

■ 49.7228, 38.5353,
5.5042

■ 95.9121, -20.0282,
1.5518

■ 45.5132, 46.6514,

■ 95.9948, -19.5625,

7.1967

0.3758

■ 42.0873, 53.8049,
9.4507

■ 39.5328, 59.3605,
12.1654

■ 37.8827, 62.7747,
15.1217

■ 37.0169, 64.1826,
17.7951

Harmonies

Analogous

The Analogous color harmony consists of three colors that are next to each other on the color wheel.



72.3435, 3.1756, -0.1492



72.3419, 4.3882, 3.7817



72.3435, 3.3445, 7.5460

Triad

The Triadic color harmony groups three colors that are evenly spaced from another and form a triangle on the color wheel.



72.3435, 4.3862, 3.7829



72.3435, -7.7179, 10.3472



72.3435, -7.9936, -2.9477

Complementary

The Complementary color scheme is a pair of colors which are on the opposite of each other on the color wheel.



72.3419, 4.3882, 3.7817



77.3411, -11.9445, 4.6103

Split Complementary

Split-complementary colors differ from the complementary color scheme. The scheme consists of three colors, the original color and two neighbors of the complement color.



72.3435, -10.8008, 0.1337



72.3419, 4.3882, 3.7817



72.3435, -10.6442, 7.7995

Square

The Square scheme is like the rectangle color scheme, but the four colors are evenly spaced on the color wheel.



72.3435, 4.3862, 3.7829



72.3435, -3.7012, 11.2033



72.3435, -11.7602, 4.0924



72.3435, -4.0266, -4.1692

Rectangle

The Rectangle color scheme consists of four colors that form a rectangle on the color wheel.



72.3419, 4.3882, 3.7817



72.3435, 1.5262, 9.4851



72.3435, -11.7602, 4.0924



72.3435, -9.1008, -2.0867

Sweetspot

The Sweet Spot groups the original color and five complimentary colors.



72.3435, 4.3862, 3.7829



97.3974, -2.2500, 5.2023



72.2484, 5.1019, -4.3634



44.7414, -0.6575, 2.3806

0.0000, NaN, NaN



46.2646, -2.4686, 2.5136

Same Dimension

The Same Dimension uses a secret algorithm to generate beautiful new colors.



72.3435, 4.3862, 3.7829



88.9865, 8.2161, 4.6609



73.5644, 0.9730, 7.9044



34.4390, 1.6138, 1.8025



29.2474, 50.7583, 13.6958



7.0126, 12.3579, 1.8290

Inverse Universe

The Inverse Universe completely reimagines the original color for something new.



72.3435, 4.3862, 3.7829



88.9865, 8.2161, 4.6609



76.0374, -8.5345, 0.1729



34.4390, 1.6138, 1.8025



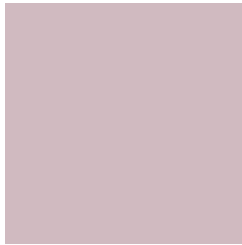
29.2474, 50.7583, 13.6958



7.0126, 12.3579, 1.8290

Previews

White Background



This preview shows how the HunterLab color 72.3419, 4.3882, 3.7817 looks on a white background.

Color Contrast Check

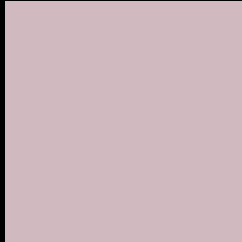
Large Text (above 18pt) WCAG AA × Fail

Any Text WCAG AA × Fail

Large Text (above 18pt) WCAG AAA × Fail

Any Text WCAG AAA × Fail

Black Background



This preview shows how the HunterLab color 72.3419, 4.3882, 3.7817 looks on a black background.

Color Contrast Check

Large Text (above 18pt) WCAG AA ✓ Pass

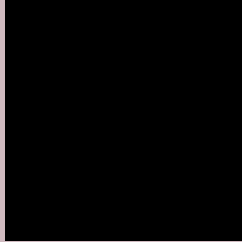
Any Text WCAG AA ✓ Pass

Large Text (above 18pt) WCAG AAA ✓ Pass

Any Text WCAG AAA ✓ Pass

If you want to check with other color combinations, try the [Color Contrast Checker](#).

HunterLab 72.3419, 4.3882, 3.7817 Background



This preview shows how black text looks on a background with the HunterLab color 72.3419, 4.3882, 3.7817.



This preview shows how white text looks on a background with the HunterLab color 72.3419, 4.3882,

3.7817.

Color Blindness Simulation

Color vision deficiency is a very complex topic, and I could not describe the different causes any better than Wikipedia does, so if you want to learn more, you should check out their [article about color blindness](#).

Dichromacy



Original Color

72.3419, 4.3882, 3.7817

Protanopia

72.5748, -2.2358, 2.5022

Deuteranopia

72.2533, 5.5834, 3.6979



Tritanopia

72.3718, 6.4189, 0.4416

Trichromacy



Original Color

72.3419, 4.3882, 3.7817

Protanomaly

72.4102, 0.2074, 2.8314

Deuteranomaly

72.1519, 5.2439, 3.5721

Tritanomaly

72.2764, 5.9095, 1.7988

Monochromacy



Original Color

72.3419, 4.3882, 3.7817

Achromatopsia

73.0258, -3.8965, 3.9676

Achromatomaly

72.5830, -0.7922, 3.4993

CSS Examples

Text

The CSS property to change the color of the text to HunterLab 72.3419, 4.3882, 3.7817 is called "color". The color property can be set on classes, ids or directly on the HTML element.

This example shows how text in the color `rgb(208, 186, 192)` looks like.

```
.text, #text, p{  
    color:rgb(208, 186, 192)  
}
```

If you want to add a text shadow in that color use the text-shadow property, you can generate a text shadow directly with our [CSS Text Shadow Generator](#).

Here you see how black text with a 4 pixel rgb(208, 186, 192) colored shadow looks like.

```
.shadow{ text-shadow: 4px 4px 2px rgb(208, 186, 192) }
```

Border

The CSS property to change the border of an element to HunterLab 72.3419, 4.3882, 3.7817 is called "border". The border property can be set on classes, ids or directly on the HTML element.

This example shows the color as border, it can be applied via the CSS property "border" or "border-color".

```
.border, #border, table{ border:4px solid rgb(208, 186, 192) }
```


If only the border color should be changed use the property `border-color`.

```
.border{ border-color:rgb(208, 186, 192) }
```

If you want to add a box shadow in that color use:

Here you see how a box with a 4 pixel `rgb(208, 186, 192)` colored shadow looks like.

```
.boxshadow{ -moz-box-shadow:4px 4px 4px  
4px rgb(208, 186, 192); -webkit-box-  
shadow:4px 4px 4px 4px rgb(208, 186, 192);  
box-shadow:4px 4px 4px 4px rgb(208, 186,  
192) }
```

Background

The CSS property to change the background color of an element to HunterLab 72.3419, 4.3882, 3.7817 is called "background". The background property can be set on classes, ids or directly on the HTML element.

```
.background, #background, body{  
background: rgb(208, 186, 192) }
```

If only the background color should be changed can be used:

```
.background{ background-color: rgb(208,  
186, 192) }
```

This example shows the color as background, it is applied via the CSS property "background".

To optimize and compress your CSS code, you can use our [online CSS compressor and optimizer](#) based on csstidy. If you want to create a linear or radial gradient as background or border, check our [CSS Gradient Generator](#).

Hey! You found this booklet interesting? Support Converting Colors with the new Membership Option!

The pro membership hides all ads, plus gives you double the colors in the color bucket, and more awesome pro features!

[Learn more, Memberships starting at \\$2.50/m!](#)

**Follow me
on Twitter!**

@ConvertingColor