

Converting Colors

HunterLab(72.2325, 2.7075,
7.3986)

Have a look what the booklet for
HunterLab(72.2325, 2.7075, 7.3986)
contains.

HunterLab(72.3956, 2.5912, 7.5169)	3
<i>Conversions</i>	4
<i>Details</i>	6
<i>Harmonies</i>	12
<i>Previews</i>	24
<i>Color Blindness Simulation</i>	28
<i>CSS Examples</i>	31

Color

**HunterLab(72.3956, 2.5912,
7.5169)**

Conversions

Conversions Part 1

Format	Color
Hex	D0BBB8
RGB	208, 187, 184
RGB Percent	82%, 73%, 72%
CMY	0.1843, 0.2666, 0.2784
CMYK	0.00, 0.10, 0.12, 0.18
HSL	8°, 20%, 77%
HSV	8°, 12%, 82%
XYZ	52.4345, 52.4112, 52.7002
YIQ	192.9370, 13.4790, 3.5190

Conversions

Conversions Part 2

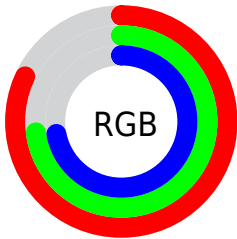
Format	Color
R _{YB}	208, 187, 184
Decimal	13679544
CIE Lab	77.53, 6.94, 4.22
CIE LCh	78, 8.127, 31.315
Yxy	52.4135, 0.3328, 0.3327
Android (android.graphics.Color)	4291869624 (0xFFD0BBB8)
YUV	192.9370, -4.4059, 13.2103
Hunter-Lab	72.3956, 2.5912, 7.5169

Details

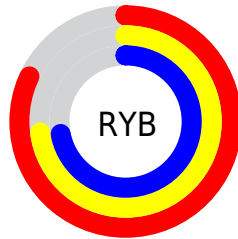
The HunterLab color $72.3956, 2.5912, 7.5169$ is a light color, and the websafe version is hex `CCCCCC`. A complement of this color would be $76.4238, -9.9904, 0.6208$, and the grayscale version is $73.0145, -3.8959, 3.9670$.

A 20% lighter version of the original color is $95.7353, -1.5598, 7.9095$, and $50.4591, 2.8185, 5.9113$ is the 20% darker color. If you saturate the color by 10%, you get $66.6079, 8.8372, 10.2705$, and if you desaturate by 10%, it is $78.4650, -3.3498, 4.7430$.

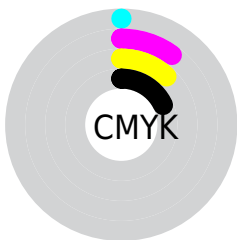
Distribution



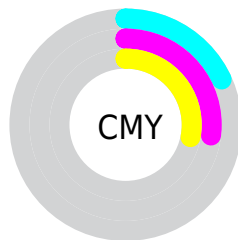
- Red (82%)
- Green (73%)
- Blue (72%)



- Red (82%)
- Yellow (73%)
- Blue (72%)



- Cyan (0%)
- Magenta (10%)
- Yellow (12%)
- Black (18%)



- Cyan (18%)
- Magenta (27%)
- Yellow (28%)

Brightness & Saturation Gradients

These gradients show how the HunterLab color 72.3956, 2.5912, 7.5169 changes by changing the brightness by 10 percent. The first figure shows a shift by +10% for each color and the second figure -10%.

Similar to the brightness gradients but the following saturation gradients show a change of the HunterLab color 72.3956, 2.5912, 7.5169 by changing the saturation by 10% instead.

■ 72.3956, 2.5912,
7.5169

■ 72.3956, 2.5912,
7.5169

199.0053, -1.6612,
15.9087

■ 61.1022, 2.8500,
6.6959

■ 96.8199, 1.9201,
9.2298

■ 50.4647, 3.0555,
5.8960

109.8900, 1.5193,
10.1192

■ 40.5280, 3.1992,
5.1177

123.5006, 1.0781,
11.0307

■ 31.3457, 3.2726,
4.3594

137.6308, 0.5989,
11.9640

■ 22.9857, 3.2637,
3.6183

152.2622, 0.0837,
12.9188

■ 15.5387, 3.1551,
2.8880

167.3783, -0.4657,

■ 9.1287, 2.9392,

13.8948

2.4149

182.9639, -1.0478,
14.8915

0.0000, NaN, NaN

0.0000, NaN, NaN

■ 72.3956, 2.5912,
7.5169

■ 72.3956, 2.5912,
7.5169

■ 66.6079, 8.8372,
10.2705

■ 78.4650, -3.3498,
4.7430

■ 61.1419, 15.4121,
12.9757

■ 84.7749, -9.0094,
1.9589

■ 56.0539, 22.3041,
15.5921

■ 91.2975, -14.4234,
-0.8272

■ 51.4096, 29.4524,
18.0536

■ 95.9948, -19.5626,
0.3758

■ 47.2850, 36.7122,

20.2630

■ 43.7626, 43.8192,
22.0906

■ 40.9210, 50.3750,
23.3910

■ 38.8177, 55.8882,
24.0496

■ 37.6168, 59.3628,
24.2185

Harmonies

Analogous

The Analogous color harmony consists of three colors that are next to each other on the color wheel.



72.3972, 3.7101, 4.1028



72.3956, 2.5912, 7.5169



72.3972, -0.2668, 9.8697

Triad

The Triadic color harmony groups three colors that are evenly spaced from another and form a triangle on the color wheel.



72.3972, 2.5891, 7.5181



72.3972, -10.2688, 7.2511



72.3972, -3.6962, -3.4855

Complementary

The Complementary color scheme is a pair of colors which are on the opposite of each other on the color wheel.



72.3956, 2.5912, 7.5169



76.4238, -9.9904, 0.6208

Split Complementary

Split-complementary colors differ from the complementary color scheme. The scheme consists of three colors, the original color and two neighbors of the complement color.



72.3972, -7.3978, -2.5363



72.3956, 2.5912, 7.5169



72.3972, -11.1443, 3.7784

Square

The Square scheme is like the rectangle color scheme, but the four colors are evenly spaced on the color wheel.



72.3972, 2.5891, 7.5181



72.3972, -7.6873, 9.7214



72.3972, -10.1042, 0.1711



72.3972, 0.0346, -2.3597

Rectangle

The Rectangle color scheme consists of four colors that form a rectangle on the color wheel.



72.3956, 2.5912, 7.5169



72.3972, -2.7418, 10.5837



72.3972, -10.1042, 0.1711



72.3972, -4.9850, -3.3982

Sweetspot

The Sweet Spot groups the original color and five complimentary colors.



72.3972, 2.5891, 7.5181



97.6325, -3.1216, 6.4961



72.1866, 7.6899, -2.9277



44.8787, -1.1679, 3.1367

0.0000, NaN, NaN



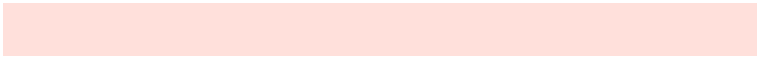
46.2646, -2.4686, 2.5136

Same Dimension

The Same Dimension uses a secret algorithm to generate beautiful new colors.



72.3972, 2.5891, 7.5181



89.2059, 5.2875, 10.3802



75.9119, -3.4189, 11.2981



34.7034, 0.6130, 3.2643



29.8269, 46.4382, 19.1922



7.6037, 9.2750, 4.8477

Inverse Universe

The Inverse Universe completely reimagines the original color for something new.



76.4238, -9.9904, 0.6208



95.4091, -14.1050, -0.2483



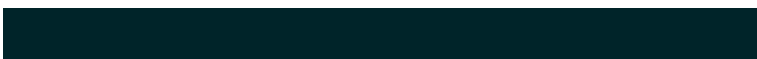
72.7830, -4.0899, -3.8352



36.2547, -4.2313, 0.6075



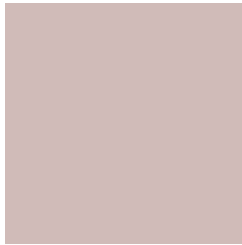
48.7643, -21.0360, -15.5404



11.8406, -5.3684, -3.2110

Previews

White Background



This preview shows how the HunterLab color 72.3956, 2.5912, 7.5169 looks on a white background.

Color Contrast Check

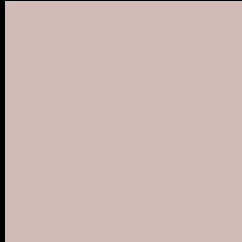
Large Text (above 18pt) WCAG AA × Fail

Any Text WCAG AA × Fail

Large Text (above 18pt) WCAG AAA × Fail

Any Text WCAG AAA × Fail

Black Background



This preview shows how the HunterLab color 72.3956, 2.5912, 7.5169 looks on a black background.

Color Contrast Check

Large Text (above 18pt) WCAG AA ✓ Pass

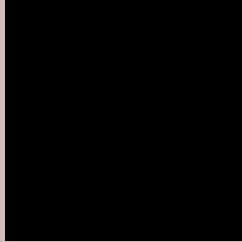
Any Text WCAG AA ✓ Pass

Large Text (above 18pt) WCAG AAA ✓ Pass

Any Text WCAG AAA ✓ Pass

If you want to check with other color combinations, try the [Color Contrast Checker](#).

HunterLab 72.3956, 2.5912, 7.5169 Background



This preview shows how black text looks on a background with the HunterLab color 72.3956, 2.5912, 7.5169.



This preview shows how white text looks on a background with the HunterLab color 72.3956, 2.5912,

7.5169.

Color Blindness Simulation

Color vision deficiency is a very complex topic, and I could not describe the different causes any better than Wikipedia does, so if you want to learn more, you should check out their [article about color blindness](#).

Dichromacy



Original Color

72.3956, 2.5912, 7.5169

Protanopia

72.4862, -3.0871, 6.6143

Deuteranopia

72.3220, 5.3363, 7.4819



Tritanopia

72.4728, 6.7557, 0.5714

Trichromacy



Original Color

72.3956, 2.5912, 7.5169

Protanomaly

72.5321, -1.4463, 7.1494

Deuteranomaly

72.4068, 4.1298, 7.5565

Tritanomaly

72.5039, 5.0558, 3.0280

Monochromacy



Original Color

72.3956, 2.5912, 7.5169

Achromatopsia

73.0258, -3.8965, 3.9676

Achromatomaly

72.7908, -1.7960, 5.1422

CSS Examples

Text

The CSS property to change the color of the text to HunterLab 72.3956, 2.5912, 7.5169 is called "color". The color property can be set on classes, ids or directly on the HTML element.

This example shows how text in the color `rgb(208, 187, 184)` looks like.

```
.text, #text, p{  
    color:rgb(208, 187, 184)  
}
```

If you want to add a text shadow in that color use the text-shadow property, you can generate a text shadow directly with our [CSS Text Shadow Generator](#).

Here you see how black text with a 4 pixel rgb(208, 187, 184) colored shadow looks like.

```
.shadow{ text-shadow: 4px 4px 2px rgb(208, 187, 184) }
```

Border

The CSS property to change the border of an element to HunterLab 72.3956, 2.5912, 7.5169 is called "border".

The border property can be set on classes, ids or directly on the HTML element.

This example shows the color as border, it can be applied via the CSS property "border" or "border-color".

```
.border, #border, table{ border:4px solid rgb(208, 187, 184) }
```


If only the border color should be changed use the property `border-color`.

```
.border{ border-color:rgb(208, 187, 184) }
```

If you want to add a box shadow in that color use:

Here you see how a box with a 4 pixel `rgb(208, 187, 184)` colored shadow looks like.

```
.boxshadow{ -moz-box-shadow:4px 4px 4px  
4px rgb(208, 187, 184); -webkit-box-  
shadow:4px 4px 4px 4px rgb(208, 187, 184);  
box-shadow:4px 4px 4px 4px rgb(208, 187,  
184) }
```

Background

The CSS property to change the background color of an element to HunterLab 72.3956, 2.5912, 7.5169 is called "background". The background property can be set on classes, ids or directly on the HTML element.

```
.background, #background, body{  
background: rgb(208, 187, 184) }
```

If only the background color should be changed can be used:

```
.background{ background-color: rgb(208,  
187, 184) }
```

This example shows the color as background, it is applied via the CSS property "background".

To optimize and compress your CSS code, you can use our [online CSS compressor and optimizer](#) based on csstidy. If you want to create a linear or radial gradient as background or border, check our [CSS Gradient Generator](#).

Hey! You found this booklet interesting? Support Converting Colors with the new Membership Option!

The pro membership hides all ads, plus gives you double the colors in the color bucket, and more awesome pro features!

[Learn more, Memberships starting at \\$2.50/m!](#)

**Follow me
on Twitter!**

@ConvertingColor