

# Converting Colors

HunterLab(72.3900, 4.0065,  
19.6371)

Have a look what the booklet for  
HunterLab(72.3900, 4.0065,  
19.6371) contains.

<b>HunterLab(72.3900, 4.0065, 19.6371)</b> .....	3
<b><i>Conversions</i></b> .....	4
<b><i>Details</i></b> .....	6
<b><i>Harmonies</i></b> .....	12
<b><i>Previews</i></b> .....	24
<b><i>Color Blindness Simulation</i></b> .....	28
<b><i>CSS Examples</i></b> .....	31

# Color

**HunterLab(72.3900, 4.0065,  
19.6371)**

# Conversions

## Conversions Part 1

Format	Color
Hex	DDB99A
RGB	221, 185, 154
RGB Percent	87%, 73%, 60%
CMY	0.1333, 0.2745, 0.3961
CMYK	0.00, 0.16, 0.30, 0.13
HSL	28°, 50%, 74%
HSV	28°, 30%, 87%
XYZ	53.0004, 52.4031, 37.8932
YIQ	192.2300, 31.4070, -2.0090

# Conversions

## Conversions Part 2

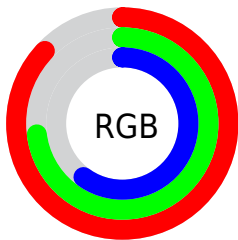
Format	Color
RYB	221, 212, 154
Decimal	14530970
CIELab	77.52, 8.43, 20.57
CIElCh	78, 22.227, 67.703
Yxy	52.4055, 0.3699, 0.3657
Android (android.graphics.Color)	4292721050 (0xFFDDB99A)
YUV	192.2300, -18.8474, 25.2313
Hunter-Lab	72.3900, 4.0065, 19.6371

# Details

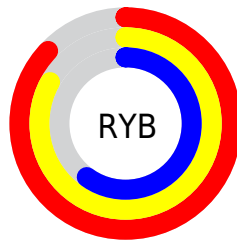
The HunterLab color  $72.3900, 4.0065, 19.6371$  is a light color, and the websafe version is hex  $\text{FFCC99}$ . A complement of this color would be  $69.9399, -8.0808, -15.0351$ , and the grayscale version is  $72.7691, -3.8828, 3.9537$ .

A 20% lighter version of the original color is  $94.2200, -5.3604, 20.0054$ , and  $50.4788, 4.3671, 16.1095$  is the 20% darker color. If you saturate the color by 10%, you get  $68.5371, 7.5361, 23.5103$ , and if you desaturate by 10%, it is  $76.4122, 0.8427, 15.1882$ .

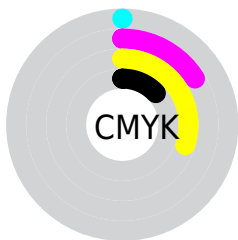
# Distribution



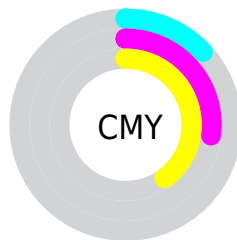
- Red (87%)
- Green (73%)
- Blue (60%)



- Red (87%)
- Yellow (83%)
- Blue (60%)



- Cyan (0%)
- Magenta (16%)
- Yellow (30%)
- Black (13%)




- Cyan (13%)
- Magenta (27%)
- Yellow (40%)

# Brightness & Saturation Gradients

These gradients show how the HunterLab color 72.3900, 4.0065, 19.6371 changes by changing the brightness by 10 percent. The first figure shows a shift by +10% for each color and the second figure -10%.

Similar to the brightness gradients but the following saturation gradients show a change of the HunterLab color 72.3900, 4.0065, 19.6371 by changing the saturation by 10% instead.




 72.3900, 4.0065,  
19.6371

 72.3900, 4.0065,  
19.6371


198.9975, 0.2845,  
34.2879

 61.0970, 4.1930,  
17.9256


 96.8138, 3.4686,  
22.9730

 50.4598, 4.3227,  
16.1680


 109.8837, 3.1305,  
24.6108

 40.5235, 4.3859,  
14.3486


123.4940, 2.7498,  
26.2360

 31.3415, 4.3729,  
12.4425

137.6239, 2.3289,  
27.8526

 22.9819, 4.2707,  
10.4115

152.2551, 1.8701,  
29.4638

 15.5354, 4.0596,  
8.3009

167.3710, 1.3753,

 9.1258, 3.7307,

31.0721

6.3881

182.9563, 0.8463,  
32.6796

0.0000, NaN, NaN

0.0000, NaN, NaN

■ 72.3900, 4.0065,  
19.6371

■ 72.3900, 4.0065,  
19.6371

■ 68.5371, 7.5361,  
23.5103

■ 76.4122, 0.8427,  
15.1882

■ 64.8646, 11.4577,  
26.7375

■ 80.5840, -1.9711,  
10.2228

■ 61.3915, 15.7778,  
29.2514

■ 84.8943, -4.4633,  
4.7984

■ 58.1364, 20.4903,  
30.9882

■ 89.3314, -6.6602,  
-1.0355

■ 55.1182, 25.5667,

■ 93.5505, -10.4366,

31.9004

-2.4974

■ 52.3545, 30.9459,  
31.9766

■ 97.0114, -15.8939,  
1.6788

■ 49.9279, 36.3149,  
31.4011

# Harmonies

## Analogous

The Analogous color harmony consists of three colors that are next to each other on the color wheel.



72.3917, 12.9189, 14.7915



72.3900, 4.0065, 19.6371



72.3917, -6.5697, 20.5953

# Triad

The Triadic color harmony groups three colors that are evenly spaced from another and form a triangle on the color wheel.



72.3917, 4.0039, 19.6381



72.3917, -22.9193, 1.3018



72.3917, 8.9820, -13.0785

# Complementary

The Complementary color scheme is a pair of colors which are on the opposite of each other on the color wheel.



72.3900, 4.0065, 19.6371



69.9399, -8.0808, -15.0351

# Split Complementary

Split-complementary colors differ from the complementary color scheme. The scheme consists of three colors, the original color and two neighbors of the complement color.



72.3917, -1.1231, -17.9467



72.3900, 4.0065, 19.6371



72.3917, -19.2494, -8.9033

# Square

The Square scheme is like the rectangle color scheme, but the four colors are evenly spaced on the color wheel.



72.3917, 4.0039, 19.6381



72.3917, -21.7211, 10.8961



72.3917, -11.4144, -16.3183



72.3917, 15.9059, -3.7822



# Rectangle

The Rectangle color scheme consists of four colors that form a rectangle on the color wheel.



72.3900, 4.0065, 19.6371



72.3917, -13.0713, 19.0480



72.3917, -11.4144, -16.3183



72.3917, 5.8225, -15.3436

# Sweetspot

The Sweet Spot groups the original color and five complimentary colors.



72.3917, 4.0039, 19.6381



95.3903, -2.7026, 11.2569



64.9914, 25.6841, -4.3906



43.7928, -1.0403, 5.6250

0.0000, NaN, NaN



46.2646, -2.4686, 2.5136



# Same Dimension

The Same Dimension uses a secret algorithm to generate beautiful new colors.



72.3917, 4.0039, 19.6381



82.4019, 7.1357, 25.9012



82.2599, -12.3852, 28.4357



37.4695, -1.0204, 4.5167



38.3441, 26.9729, 24.0997



10.6006, 4.9357, 6.6185

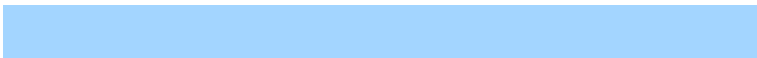


# Inverse Universe

The Inverse Universe completely reimagines the original color for something new.



69.9399, -8.0808, -15.0351



78.9775, -9.6797, -22.5278



60.2691, 8.5385, -30.0083



37.1081, -2.8136, -0.5941



32.9987, 4.5126, -50.9870

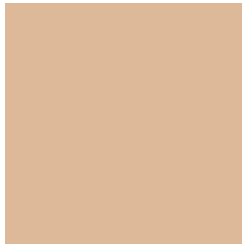


9.3662, -0.5430, -10.5348



# Previews

## White Background



This preview shows how the HunterLab color 72.3900, 4.0065, 19.6371 looks on a white background.

## Color Contrast Check

Large Text (above 18pt) WCAG AA × Fail

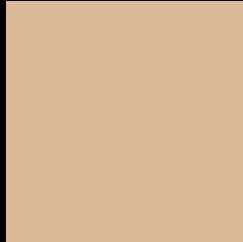
Any Text WCAG AA × Fail

Large Text (above 18pt) WCAG AAA × Fail

Any Text WCAG AAA × Fail



# Black Background



This preview shows how the HunterLab color 72.3900, 4.0065, 19.6371 looks on a black background.

## Color Contrast Check

Large Text (above 18pt) WCAG AA ✓ Pass

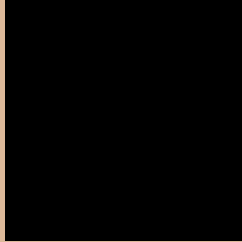
Any Text WCAG AA ✓ Pass

Large Text (above 18pt) WCAG AAA ✓ Pass

Any Text WCAG AAA ✓ Pass

If you want to check with other color combinations, try the [Color Contrast Checker](#).

## HunterLab 72.3900, 4.0065, 19.6371 Background



This preview shows how black text looks on a background with the HunterLab color 72.3900, 4.0065, 19.6371.



This preview shows how white text looks on a background with the HunterLab color 72.3900, 4.0065,



# Color Blindness Simulation

Color vision deficiency is a very complex topic, and I could not describe the different causes any better than Wikipedia does, so if you want to learn more, you should check out their [article about color blindness](#).

## Dichromacy



### Original Color

72.3900, 4.0065, 19.6371

### Protanopia

72.3826, -4.9813, 18.3861

### Deuteranopia

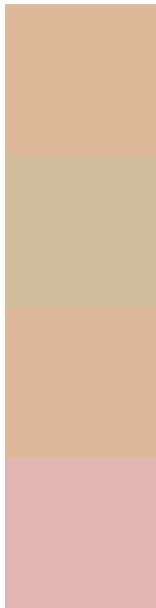
72.3202, 5.2526, 19.5917



## Tritanopia

72.1789, 14.1472, 3.2811

# Trichromacy



**Original Color**

72.3900, 4.0065, 19.6371

**Protanomaly**

72.4549, -1.7026, 18.8789

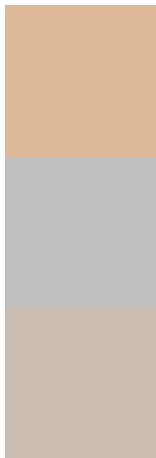
**Deuteranomaly**

72.2106, 4.8850, 19.4797

**Tritanomaly**

72.2148, 10.5641, 9.6685

# Monochromacy



**Original Color**

72.3900, 4.0065, 19.6371

**Achromatopsia**

72.6027, -3.8739, 3.9446

**Achromatomaly**

72.3229, -1.0326, 10.0176

# CSS Examples

## Text

The CSS property to change the color of the text to HunterLab 72.3900, 4.0065, 19.6371 is called "color". The color property can be set on classes, ids or directly on the HTML element.

This example shows how text in the color `rgb(221, 185, 154)` looks like.

```
.text, #text, p{  
    color:rgb(221, 185, 154)  
}
```

If you want to add a text shadow in that color use the text-shadow property, you can generate a text shadow directly with our [CSS Text Shadow Generator](#).

Here you see how black text with a 4 pixel rgb(221, 185, 154) colored shadow looks like.

```
.shadow{ text-shadow: 4px 4px 2px rgb(221, 185, 154) }
```

## Border

The CSS property to change the border of an element to HunterLab 72.3900, 4.0065, 19.6371 is called "border". The border property can be set on classes, ids or directly on the HTML element.

This example shows the color as border, it can be applied via the CSS property "border" or "border-color".

```
.border, #border, table{ border:4px solid rgb(221, 185, 154) }
```



If only the border color should be changed use the property `border-color`.

```
.border{ border-color:rgb(221, 185, 154) }
```

If you want to add a box shadow in that color use:

Here you see how a box with a 4 pixel `rgb(221, 185, 154)` colored shadow looks like.

```
.boxshadow{ -moz-box-shadow:4px 4px 4px 4px rgb(221, 185, 154); -webkit-box-shadow:4px 4px 4px 4px rgb(221, 185, 154); box-shadow:4px 4px 4px 4px rgb(221, 185, 154) }
```

# Background

The CSS property to change the background color of an element to HunterLab 72.3900, 4.0065, 19.6371 is called "background". The background property can be set on classes, ids or directly on the HTML element.

```
.background, #background, body{  
background: rgb(221, 185, 154) }
```

If only the background color should be changed can be used:

```
.background{ background-color: rgb(221,  
185, 154) }
```

This example shows the color as background, it is applied via the CSS property "background".

To optimize and compress your CSS code, you can use our [online CSS compressor and optimizer](#) based on csstidy. If you want to create a linear or radial gradient as background or border, check our [CSS Gradient Generator](#).

Hey! You found this booklet interesting? Support Converting Colors with the new Membership Option!

The pro membership hides all ads, plus gives you double the colors in the color bucket, and more awesome pro features!

**[Learn more, Memberships starting at \\$2.50/m!](#)**

**Follow me  
on Twitter!**

@ConvertingColor