

Converting Colors

HunterLab(72.4088, -0.9561,
11.8119)

Have a look what the booklet for
HunterLab(72.4088, -0.9561,
11.8119) contains.

HunterLab(72.4088, -0.9561, 11.8119)	3
<i>Conversions</i>	4
<i>Details</i>	6
<i>Harmonies</i>	12
<i>Previews</i>	24
<i>Color Blindness Simulation</i>	28
<i>CSS Examples</i>	31

Color

**HunterLab(72.4088, -0.9561,
11.8119)**

Conversions

Conversions Part 1

Format	Color
Hex	CDBDAE
RGB	205, 189, 174
RGB Percent	80%, 74%, 68%
CMY	0.1961, 0.2588, 0.3176
CMYK	0.00, 0.08, 0.15, 0.20
HSL	29°, 24%, 74%
HSV	29°, 15%, 80%
XYZ	51.0145, 52.4303, 47.4758
YIQ	192.0740, 14.3510, -1.2730

Conversions

Conversions Part 2

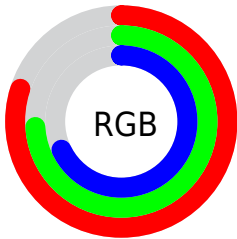
Format	Color
R _Y B	205, 203, 174
Decimal	13483438
CIE Lab	77.54, 3.16, 9.61
CIE LCh	78, 10.119, 71.816
Yxy	52.4327, 0.3380, 0.3474
Android (android.graphics.Color)	4291673518 (0xFFCDBDAE)
YUV	192.0740, -8.9105, 11.3361
Hunter-Lab	72.4088, -0.9561, 11.8119

Details

The HunterLab color **72.4088, -0.9561, 11.8119** is a light color, and the websafe version is hex **CCCCCC**. A complement of this color would be **70.8748, -5.9416, -4.7486**, and the grayscale version is **72.6676, -3.8774, 3.9482**.

A 20% lighter version of the original color is **96.0323, -4.4209, 13.3304**, and **50.5893, -0.0404, 9.5931** is the 20% darker color. If you saturate the color by 10%, you get **68.7799, 1.5434, 16.2424**, and if you desaturate by 10%, it is **76.1660, -3.1547, 6.9173**.

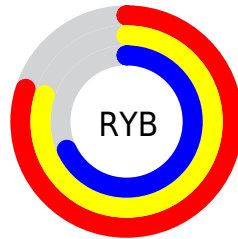
Distribution



Red (80%)

Green (74%)

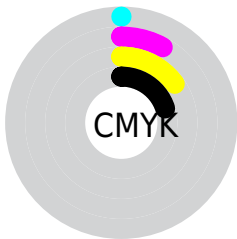
Blue (68%)



Red (80%)

Yellow (80%)

Blue (68%)

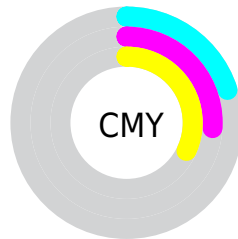


Cyan (0%)

Magenta (8%)

Yellow (15%)

Black (20%)



Cyan (20%)

Magenta (26%)

Yellow (32%)

Brightness & Saturation Gradients

These gradients show how the HunterLab color 72.4088, -0.9561, 11.8119 changes by changing the brightness by 10 percent. The first figure shows a shift by +10% for each color and the second figure -10%.

Similar to the brightness gradients but the following saturation gradients show a change of the HunterLab color 72.4088, -0.9561, 11.8119 by changing the saturation by 10% instead.

■ 72.4088, -0.9561,
11.8119

■ 72.4088, -0.9561,
11.8119

199.0238, -6.5704,
22.1916

■ 61.1147, -0.5122,
10.7115

■ 96.8344, -1.9711,
14.0364

■ 50.4764, -0.1109,
9.6122

109.9052, -2.5330,
15.1628

■ 40.5389, 0.2414,
8.5098

123.5163, -3.1291,
16.3008

■ 31.3557, 0.5392,
7.3956

137.6471, -3.7577,
17.4514

■ 22.9947, 0.7746,
6.2559

152.2791, -4.4174,
18.6154

■ 15.5466, 0.9362,
5.0660

167.3957, -5.1068,

■ 9.1356, 1.0246,

19.7931

4.8595

182.9819, -5.8248,
20.9851

0.0000, NaN, NaN

0.0000, NaN, NaN

■ 72.4088, -0.9561,
11.8119

■ 72.4088, -0.9561,
11.8119

■ 68.7799, 1.5434,
16.2424

■ 76.1660, -3.1547,
6.9173

■ 65.2857, 4.3720,
20.1524

■ 80.0366, -5.0693,
1.6034

■ 61.9402, 7.5470,
23.4856

■ 84.0130, -6.7249,
-4.0859

■ 58.7571, 11.0820,
26.1825

■ 88.0506, -8.3460,
-9.5951

■ 55.7505, 14.9812,

■ 91.4557, -13.7663,

28.1857

-5.2199

■ 52.9355, 19.2344,
29.4473

■ 94.9305, -19.1127,
-0.9273

■ 50.3264, 23.8097,
29.9408

■ 95.7702, -20.3788,
0.0860

■ 47.9359, 28.6451,
29.6841

■ 46.8451, 31.0376,
29.4091

Harmonies

Analogous

The Analogous color harmony consists of three colors that are next to each other on the color wheel.



72.4104, 3.1562, 9.5664



72.4088, -0.9561, 11.8119



72.4104, -5.7520, 12.0363

Triad

The Triadic color harmony groups three colors that are evenly spaced from another and form a triangle on the color wheel.



72.4104, -0.9582, 11.8130



72.4104, -12.7010, 2.1164



72.4104, 2.4037, -2.9280

Complementary

The Complementary color scheme is a pair of colors which are on the opposite of each other on the color wheel.



72.4088, -0.9561, 11.8119



70.8748, -5.9416, -4.7486

Split Complementary

Split-complementary colors differ from the complementary color scheme. The scheme consists of three colors, the original color and two neighbors of the complement color.



72.4104, -1.9636, -5.2112



72.4088, -0.9561, 11.8119



72.4104, -10.6334, -2.1743

Square

The Square scheme is like the rectangle color scheme, but the four colors are evenly spaced on the color wheel.



72.4104, -0.9582, 11.8130



72.4104, -12.4478, 6.6341



72.4104, -6.7316, -4.9267



72.4104, 5.1319, 1.1414

Rectangle

The Rectangle color scheme consists of four colors that form a rectangle on the color wheel.



72.4088, -0.9561, 11.8119



72.4104, -8.6799, 11.0271



72.4104, -6.7316, -4.9267



72.4104, 1.0739, -3.9415

Sweetspot

The Sweet Spot groups the original color and five complimentary colors.



72.4104, -0.9582, 11.8130



97.5089, -4.0528, 8.8151



68.5350, 9.2725, 0.2406



44.9515, -1.7882, 4.2932

0.0000, NaN, NaN



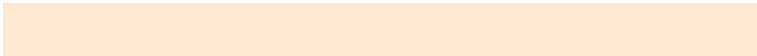
46.2646, -2.4686, 2.5136

Same Dimension

The Same Dimension uses a secret algorithm to generate beautiful new colors.



72.4104, -0.9582, 11.8130



91.2124, -0.2747, 16.9473



77.1048, -8.7057, 16.5664



34.7776, -1.0508, 4.2276



37.2155, 23.8866, 23.3502



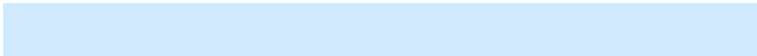
9.3073, 3.5291, 5.7969

Inverse Universe

The Inverse Universe completely reimagines the original color for something new.



70.8748, -5.9416, -4.7486



88.8515, -7.9296, -8.5201



66.2415, 1.8669, -10.8465



34.3299, -2.5053, -0.5998



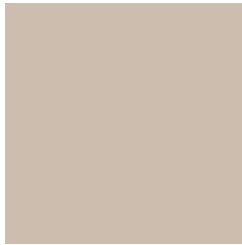
30.5359, 5.8961, -50.8952



7.9539, -0.4667, -8.9341

Previews

White Background



This preview shows how the HunterLab color 72.4088, -0.9561, 11.8119 looks on a white background.

Color Contrast Check

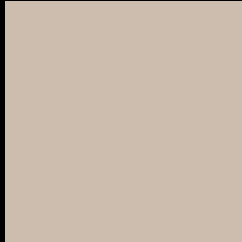
Large Text (above 18pt) WCAG AA × Fail

Any Text WCAG AA × Fail

Large Text (above 18pt) WCAG AAA × Fail

Any Text WCAG AAA × Fail

Black Background



This preview shows how the HunterLab color 72.4088, -0.9561, 11.8119 looks on a black background.

Color Contrast Check

Large Text (above 18pt) WCAG AA ✓ Pass

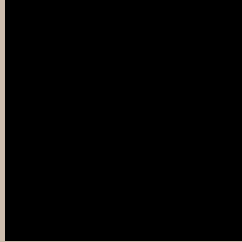
Any Text WCAG AA ✓ Pass

Large Text (above 18pt) WCAG AAA ✓ Pass

Any Text WCAG AAA ✓ Pass

If you want to check with other color combinations, try the [Color Contrast Checker](#).

HunterLab 72.4088, -0.9561, 11.8119 Background



This preview shows how black text looks on a background with the HunterLab color 72.4088, -0.9561, 11.8119.



This preview shows how white text looks on a background with the HunterLab color 72.4088, -0.9561, 11.8119.

Color Blindness Simulation

Color vision deficiency is a very complex topic, and I could not describe the different causes any better than Wikipedia does, so if you want to learn more, you should check out their [article about color blindness](#).

Dichromacy



Original Color

72.4088, -0.9561, 11.8119

Protanopia

72.4561, -3.8127, 11.3927

Deuteranopia

72.3823, 5.0333, 11.4682



Tritanopia

72.3035, 6.2554, -0.1460

Trichromacy



Original Color

72.4088, -0.9561, 11.8119

Protanomaly

72.3461, -2.6513, 11.2947

Deuteranomaly

72.2565, 3.1173, 11.2993

Tritanomaly

72.2114, 3.8875, 4.0940

Monochromacy



Original Color

72.4088, -0.9561, 11.8119

Achromatopsia

72.6027, -3.8739, 3.9446

Achromatomaly

72.5498, -2.9252, 7.1435

CSS Examples

Text

The CSS property to change the color of the text to HunterLab 72.4088, -0.9561, 11.8119 is called "color". The color property can be set on classes, ids or directly on the HTML element.

This example shows how text in the color `rgb(205, 189, 174)` looks like.

```
.text, #text, p{  
    color:rgb(205, 189, 174)  
}
```

If you want to add a text shadow in that color use the text-shadow property, you can generate a text shadow directly with our [CSS Text Shadow Generator](#).

Here you see how black text with a 4 pixel rgb(205, 189, 174) colored shadow looks like.

```
.shadow{ text-shadow: 4px 4px 2px rgb(205, 189, 174) }
```

Border

The CSS property to change the border of an element to HunterLab 72.4088, -0.9561, 11.8119 is called "border". The border property can be set on classes, ids or directly on the HTML element.

This example shows the color as border, it can be applied via the CSS property "border" or "border-color".

```
.border, #border, table{ border:4px solid rgb(205, 189, 174) }
```


If only the border color should be changed use the property `border-color`.

```
.border{ border-color:rgb(205, 189, 174) }
```

If you want to add a box shadow in that color use:

Here you see how a box with a 4 pixel `rgb(205, 189, 174)` colored shadow looks like.

```
.boxshadow{ -moz-box-shadow:4px 4px 4px  
4px rgb(205, 189, 174); -webkit-box-  
shadow:4px 4px 4px 4px rgb(205, 189, 174);  
box-shadow:4px 4px 4px 4px rgb(205, 189,  
174) }
```

Background

The CSS property to change the background color of an element to HunterLab 72.4088, -0.9561, 11.8119 is called "background". The background property can be set on classes, ids or directly on the HTML element.

```
.background, #background, body{  
background: rgb(205, 189, 174) }
```

If only the background color should be changed can be used:

```
.background{ background-color: rgb(205,  
189, 174) }
```

This example shows the color as background, it is applied via the CSS property "background".

To optimize and compress your CSS code, you can use our [online CSS compressor and optimizer](#) based on csstidy. If you want to create a linear or radial gradient as background or border, check our [CSS Gradient Generator](#).

Hey! You found this booklet interesting? Support Converting Colors with the new Membership Option!

The pro membership hides all ads, plus gives you double the colors in the color bucket, and more awesome pro features!

[Learn more, Memberships starting at \\$2.50/m!](#)

**Follow me
on Twitter!**

@ConvertingColor