

Converting Colors

HunterLab(72.4486, 1.4463,
3.8169)

Have a look what the booklet for
HunterLab(72.4486, 1.4463, 3.8169)
contains.

HunterLab(72.4353, 1.6913, 3.8448)	3
<i>Conversions</i>	4
<i>Details</i>	6
<i>Harmonies</i>	12
<i>Previews</i>	24
<i>Color Blindness Simulation</i>	28
<i>CSS Examples</i>	31

Color

**HunterLab(72.4353, 1.6913,
3.8448)**

Conversions

Conversions Part 1

Format	Color
Hex	CBBCC0
RGB	203, 188, 192
RGB Percent	80%, 74%, 75%
CMY	0.2039, 0.2627, 0.2471
CMYK	0.00, 0.07, 0.05, 0.20
HSL	344°, 13%, 77%
HSV	344°, 7%, 80%
XYZ	52.1263, 52.4687, 57.2493
YIQ	192.9410, 7.6560, 4.4240

Conversions

Conversions Part 2

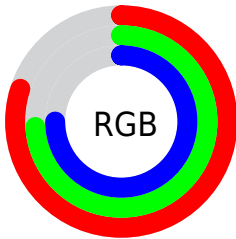
Format	Color
R _Y B	203, 188, 192
Decimal	13352128
CIE Lab	77.56, 5.99, -0.11
CIE LCh	78, 5.992, 358.935
Yxy	52.4710, 0.3221, 0.3242
Android (android.graphics.Color)	4291542208 (0xFFCBBCC0)
YUV	192.9410, -0.4639, 8.8217
Hunter-Lab	72.4353, 1.6913, 3.8448

Details

The HunterLab color $72.4353, 1.6913, 3.8448$ is a light color, and the websafe version is hex `CCCCCC`. A complement of this color would be $75.8473, -9.4003, 4.3324$, and the grayscale version is $73.0018, -3.8952, 3.9663$.

A 20% lighter version of the original color is $96.3009, -0.7161, 4.6515$, and $50.5782, 2.2538, 2.5722$ is the 20% darker color. If you saturate the color by 10%, you get $66.1603, 9.7410, 3.6105$, and if you desaturate by 10%, it is $79.0297, -6.1523, 4.3554$.

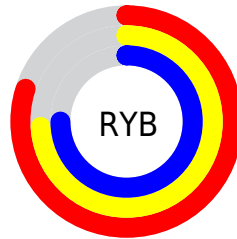
Distribution



Red (80%)

Green (74%)

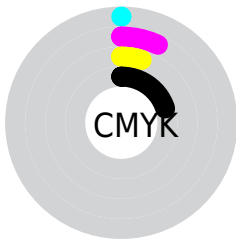
Blue (75%)



Red (80%)

Yellow (74%)

Blue (75%)

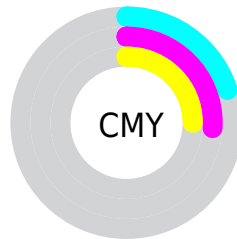


Cyan (0%)

Magenta (7%)

Yellow (5%)

Black (20%)



Cyan (20%)

Magenta (26%)

Yellow (25%)

Brightness & Saturation Gradients

These gradients show how the HunterLab color 72.4353, 1.6913, 3.8448 changes by changing the brightness by 10 percent. The first figure shows a shift by +10% for each color and the second figure -10%.

Similar to the brightness gradients but the following saturation gradients show a change of the HunterLab color 72.4353, 1.6913, 3.8448 by changing the saturation by 10% instead.

■ 72.4353, 1.6913,
3.8448

■ 72.4353, 1.6913,
3.8448

199.0609, -2.9029,
10.6997

■ 61.1397, 1.9966,
3.2364

■ 96.8636, 0.9341,
5.1658

■ 50.4999, 2.2511,
2.6629

109.9356, 0.4929,
5.8727

■ 40.5607, 2.4470,
2.1279

123.5480, 0.0128,
6.6093

■ 31.3757, 2.5763,
1.6345

137.6799, -0.5039,
7.3742

■ 23.0128, 2.6283,
1.1865

152.3131, -1.0553,
8.1667

■ 15.5624, 2.5865,
0.7890

167.4307, -1.6399,

■ 9.1494, 2.4427,

8.9856

0.4476

183.0179, -2.2562,
9.8302

0.0000, NaN, NaN

0.0000, NaN, NaN

■ 72.4353, 1.6913,
3.8448

■ 72.4353, 1.6913,
3.8448

■ 66.1603, 9.7410,
3.6105

■ 79.0297, -6.1523,
4.3554

■ 60.2550, 17.9881,
3.7074

■ 85.8948, -13.7944,
5.0902

■ 54.7900, 26.3676,
4.2045

■ 92.9972, -21.2584,
6.0116

■ 49.8491, 34.7310,
5.1723

■ 95.5077, -21.5648,
1.5278

■ 45.5307, 42.7976,

■ 95.6225, -20.9163,

6.6679

-0.1048

■ 41.9398, 50.1184,
8.7062

■ 39.1714, 56.1001,
11.2204

■ 37.2793, 60.1550,
14.0326

■ 36.2177, 62.0500,
16.8526

Harmonies

Analogous

The Analogous color harmony consists of three colors that are next to each other on the color wheel.



72.4369, 0.8830, 1.2023



72.4353, 1.6913, 3.8448



72.4369, 0.9874, 6.4189

Triad

The Triadic color harmony groups three colors that are evenly spaced from another and form a triangle on the color wheel.



72.4369, 1.6894, 3.8460



72.4369, -6.5000, 8.3565



72.4369, -6.6738, -0.6639

Complementary

The Complementary color scheme is a pair of colors which are on the opposite of each other on the color wheel.



72.4353, 1.6913, 3.8448



75.8473, -9.4003, 4.3324

Split Complementary

Split-complementary colors differ from the complementary color scheme. The scheme consists of three colors, the original color and two neighbors of the complement color.



72.4369, -8.6006, 1.3764



72.4353, 1.6913, 3.8448



72.4369, -8.5014, 6.5805

Square

The Square scheme is like the rectangle color scheme, but the four colors are evenly spaced on the color wheel.



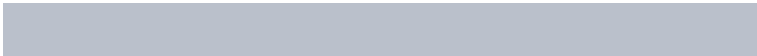
72.4369, 1.6894, 3.8460



72.4369, -3.7671, 8.9616



72.4369, -9.2645, 4.0397



72.4369, -3.9707, -1.4626

Rectangle

The Rectangle color scheme consists of four colors that form a rectangle on the color wheel.



72.4353, 1.6913, 3.8448



72.4369, -0.2354, 7.7626



72.4369, -9.2645, 4.0397



72.4369, -7.4322, -0.0967

Sweetspot

The Sweet Spot groups the original color and five complimentary colors.



72.4369, 1.6894, 3.8460



98.2601, -3.2868, 5.2903



72.4036, 2.2749, -1.6128



45.4993, -1.5677, 2.4507

0.0000, NaN, NaN



46.2646, -2.4686, 2.5136

Same Dimension

The Same Dimension uses a secret algorithm to generate beautiful new colors.



72.4369, 1.6894, 3.8460



92.2953, 3.9721, 4.8966



73.3550, -0.7471, 6.7311



33.5588, 1.5527, 1.7805



28.7457, 49.8650, 13.6360



6.6270, 11.6861, 1.6693

Inverse Universe

The Inverse Universe completely reimagines the original color for something new.



72.4369, 1.6894, 3.8460



92.2953, 3.9721, 4.8966



74.8880, -6.9682, 1.2912



33.5588, 1.5527, 1.7805



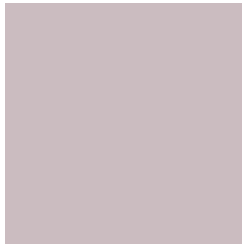
28.7457, 49.8650, 13.6360



6.6270, 11.6861, 1.6693

Previews

White Background



This preview shows how the HunterLab color 72.4353, 1.6913, 3.8448 looks on a white background.

Color Contrast Check

Large Text (above 18pt) WCAG AA × Fail

Any Text WCAG AA × Fail

Large Text (above 18pt) WCAG AAA × Fail

Any Text WCAG AAA × Fail

Black Background



This preview shows how the HunterLab color 72.4353, 1.6913, 3.8448 looks on a black background.

Color Contrast Check

Large Text (above 18pt) WCAG AA ✓ Pass

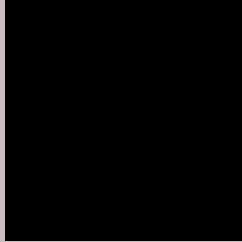
Any Text WCAG AA ✓ Pass

Large Text (above 18pt) WCAG AAA ✓ Pass

Any Text WCAG AAA ✓ Pass

If you want to check with other color combinations, try the [Color Contrast Checker](#).

HunterLab 72.4353, 1.6913, 3.8448 Background



This preview shows how black text looks on a background with the HunterLab color 72.4353, 1.6913, 3.8448.



This preview shows how white text looks on a background with the HunterLab color 72.4353, 1.6913,

3.8448.

Color Blindness Simulation

Color vision deficiency is a very complex topic, and I could not describe the different causes any better than Wikipedia does, so if you want to learn more, you should check out their [article about color blindness](#).

Dichromacy



Original Color

72.4353, 1.6913, 3.8448

Protanopia

72.5438, -2.4054, 2.9449

Deuteranopia

72.5432, 5.0647, 4.0311



Tritanopia

72.5225, 4.0636, -0.4168

Trichromacy



Original Color

72.4353, 1.6913, 3.8448

Protanomaly

72.4896, -1.1132, 3.3830

Deuteranomaly

72.5340, 3.5355, 3.9935

Tritanomaly

72.4260, 3.5453, 0.9545

Monochromacy



Original Color

72.4353, 1.6913, 3.8448

Achromatopsia

73.0258, -3.8965, 3.9676

Achromatomaly

72.7889, -1.6208, 3.7282

CSS Examples

Text

The CSS property to change the color of the text to HunterLab 72.4353, 1.6913, 3.8448 is called "color". The color property can be set on classes, ids or directly on the HTML element.

This example shows how text in the color `rgb(203, 188, 192)` looks like.

```
.text, #text, p{  
    color:rgb(203, 188, 192)  
}
```

If you want to add a text shadow in that color use the text-shadow property, you can generate a text shadow directly with our [CSS Text Shadow Generator](#).

Here you see how black text with a 4 pixel rgb(203, 188, 192) colored shadow looks like.

```
.shadow{ text-shadow: 4px 4px 2px rgb(203, 188, 192) }
```

Border

The CSS property to change the border of an element to HunterLab 72.4353, 1.6913, 3.8448 is called "border".

The border property can be set on classes, ids or directly on the HTML element.

This example shows the color as border, it can be applied via the CSS property "border" or "border-color".

```
.border, #border, table{ border:4px solid rgb(203, 188, 192) }
```


If only the border color should be changed use the property `border-color`.

```
.border{ border-color:rgb(203, 188, 192) }
```

If you want to add a box shadow in that color use:

Here you see how a box with a 4 pixel `rgb(203, 188, 192)` colored shadow looks like.

```
.boxshadow{ -moz-box-shadow:4px 4px 4px  
4px rgb(203, 188, 192); -webkit-box-  
shadow:4px 4px 4px 4px rgb(203, 188, 192);  
box-shadow:4px 4px 4px 4px rgb(203, 188,  
192) }
```

Background

The CSS property to change the background color of an element to HunterLab 72.4353, 1.6913, 3.8448 is called "background". The background property can be set on classes, ids or directly on the HTML element.

```
.background, #background, body{  
background: rgb(203, 188, 192) }
```

If only the background color should be changed can be used:

```
.background{ background-color: rgb(203,  
188, 192) }
```

This example shows the color as background, it is applied via the CSS property "background".

To optimize and compress your CSS code, you can use our [online CSS compressor and optimizer](#) based on csstidy. If you want to create a linear or radial gradient as background or border, check our [CSS Gradient Generator](#).

Hey! You found this booklet interesting? Support Converting Colors with the new Membership Option!

The pro membership hides all ads, plus gives you double the colors in the color bucket, and more awesome pro features!

[Learn more, Memberships starting at \\$2.50/m!](#)

**Follow me
on Twitter!**

@ConvertingColor