

Converting Colors

HunterLab(72.5523, 8.4266,
8.0639)

Have a look what the booklet for
HunterLab(72.5523, 8.4266, 8.0639)
contains.

HunterLab(72.4579, 8.6810, 8.1420)	3
<i>Conversions</i>	4
<i>Details</i>	6
<i>Harmonies</i>	12
<i>Previews</i>	24
<i>Color Blindness Simulation</i>	28
<i>CSS Examples</i>	31

Color

**HunterLab(72.4579, 8.6810,
8.1420)**

Conversions

Conversions Part 1

Format	Color
Hex	DCB7B7
RGB	220, 183, 183
RGB Percent	86%, 72%, 72%
CMY	0.1373, 0.2823, 0.2823
CMYK	0.00, 0.17, 0.17, 0.14
HSL	0°, 35%, 79%
HSV	0°, 17%, 86%
XYZ	54.9959, 52.5015, 52.0349
YIQ	194.0630, 22.0520, 7.8440

Conversions

Conversions Part 2

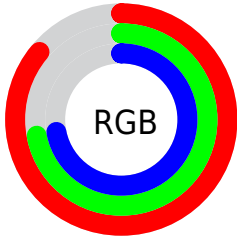
Format	Color
R _Y B	220, 183, 183
Decimal	14464951
CIE Lab	77.58, 13.28, 4.98
CIE LCh	78, 14.186, 20.552
Yxy	52.5038, 0.3447, 0.3291
Android (android.graphics.Color)	4292655031 (0xFFDCB7B7)
YUV	194.0630, -5.4541, 22.7467
Hunter-Lab	72.4579, 8.6810, 8.1420

Details

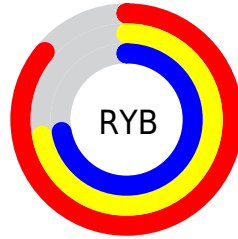
The HunterLab color $72.4579, 8.6810, 8.1420$ is a light color, and the websafe version is hex FFCCCC . A complement of this color would be $81.4981, -15.5017, 0.6878$, and the grayscale version is $73.4931, -3.9214, 3.9930$.

A 20% lighter version of the original color is $94.4590, 0.3987, 6.9550$, and $50.5730, 8.6620, 6.5552$ is the 20% darker color. If you saturate the color by 10%, you get $65.7886, 16.9902, 10.4480$, and if you desaturate by 10%, it is $79.5535, 0.7187, 5.9866$.

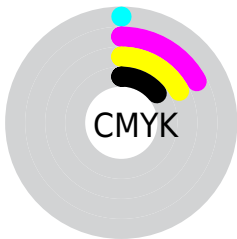
Distribution



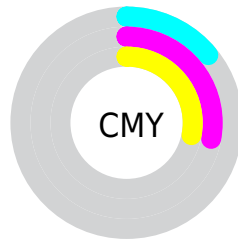
- Red (86%)
- Green (72%)
- Blue (72%)



- Red (86%)
- Yellow (72%)
- Blue (72%)



- Cyan (0%)
- Magenta (17%)
- Yellow (17%)
- Black (14%)




- Cyan (14%)
- Magenta (28%)
- Yellow (28%)

Brightness & Saturation Gradients


These gradients show how the HunterLab color 72.4579, 8.6810, 8.1420 changes by changing the brightness by 10 percent. The first figure shows a shift by +10% for each color and the second figure -10%.


Similar to the brightness gradients but the following saturation gradients show a change of the HunterLab color 72.4579, 8.6810, 8.1420 by changing the saturation by 10% instead.


 72.4579, 8.6810,
8.1420

 72.4579, 8.6810,
8.1420

199.0926, 6.6632,
16.8088

 61.1611, 8.6390,
7.2827


 96.8885, 8.5708,
9.9254

 50.5199, 8.5278,
6.4419


109.9617, 8.4337,
10.8475

 40.5794, 8.3360,
5.6193

123.5750, 8.2467,
11.7903

 31.3929, 8.0514,
4.8127

137.7080, 8.0130,
12.7537

 23.0283, 7.6576,
4.0177

152.3421, 7.7355,
13.7375

 15.5760, 7.1311,
3.2257

167.4607, 7.4167,

 9.1612, 6.4565,

14.7414

2.7519

183.0488, 7.0586,
15.7652

0.0000, INF, NaN

0.0000, NaN, NaN

■ 72.4579, 8.6810,
8.1420

■ 72.4579, 8.6810,
8.1420

■ 65.7886, 16.9902,
10.4480

■ 79.5535, 0.7187,
5.9866

■ 59.6221, 25.6237,
12.8970

■ 87.0060, -6.9058,
3.9682

■ 54.0607, 34.4599,
15.4573

■ 94.7659, -14.2308,
2.0723

■ 49.2230, 43.2282,
18.0468

■ 96.9308, -16.1834,
1.5759

■ 45.2373, 51.4494,

20.5140

■ 42.2186, 58.4436,
22.6395

■ 40.2296, 63.4945,
24.1877

■ 39.2219, 66.2087,
25.0235

■ 39.0080, 66.7990,
25.2060

Harmonies

Analogous

The Analogous color harmony consists of three colors that are next to each other on the color wheel.



72.4595, 9.3729, 1.8895



72.4579, 8.6810, 8.1420



72.4595, 4.5562, 12.8394

Triad

The Triadic color harmony groups three colors that are evenly spaced from another and form a triangle on the color wheel.



72.4595, 8.6787, 8.1432



72.4595, -13.6161, 11.3537



72.4595, -5.9869, -9.3125

Complementary

The Complementary color scheme is a pair of colors which are on the opposite of each other on the color wheel.



72.4579, 8.6810, 8.1420



81.4981, -15.5017, 0.6878

Split Complementary

Split-complementary colors differ from the complementary color scheme. The scheme consists of three colors, the original color and two neighbors of the complement color.



72.4595, -11.9282, -6.2447



72.4579, 8.6810, 8.1420



72.4595, -16.2255, 5.9404

Square

The Square scheme is like the rectangle color scheme, but the four colors are evenly spaced on the color wheel.



72.4595, 8.6787, 8.1432



72.4595, -8.3674, 14.5719



72.4595, -15.6191, -0.5222



72.4595, 0.7395, -8.5857

Rectangle

The Rectangle color scheme consists of four colors that form a rectangle on the color wheel.



72.4579, 8.6810, 8.1420



72.4595, 0.4990, 14.6404



72.4595, -15.6191, -0.5222



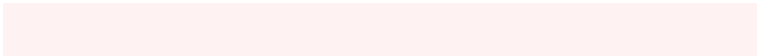
72.4595, -8.1381, -8.6810

Sweetspot

The Sweet Spot groups the original color and five complimentary colors.



72.4595, 8.6787, 8.1432



95.5719, -0.7793, 6.6412



73.6550, 14.9785, -8.8568



43.9318, -0.0607, 3.1526

0.0000, NaN, NaN



46.2646, -2.4686, 2.5136

Same Dimension

The Same Dimension uses a secret algorithm to generate beautiful new colors.



72.4595, 8.6787, 8.1432



82.9506, 13.5019, 10.5181



77.8729, -0.8859, 13.8598



36.1272, 1.2864, 3.0406



29.8836, 51.1731, 19.3100



7.6068, 13.0232, 4.9153

Inverse Universe

The Inverse Universe completely reimagines the original color for something new.



81.4981, -15.5017, 0.6878



95.6942, -20.6457, -0.0119



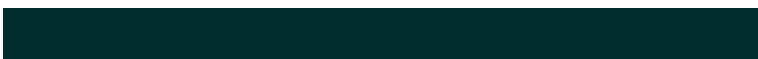
75.6584, -6.2967, -6.5515



38.5089, -5.0700, 1.0812



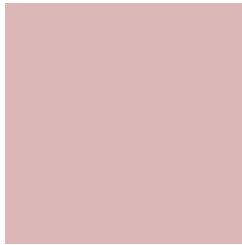
57.5032, -30.4813, -6.0736



14.6365, -7.7587, -1.5455

Previews

White Background



This preview shows how the HunterLab color 72.4579, 8.6810, 8.1420 looks on a white background.

Color Contrast Check

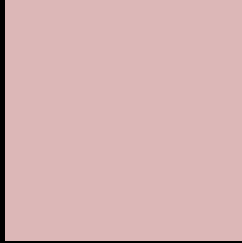
Large Text (above 18pt) WCAG AA × Fail

Any Text WCAG AA × Fail

Large Text (above 18pt) WCAG AAA × Fail

Any Text WCAG AAA × Fail

Black Background



This preview shows how the HunterLab color 72.4579, 8.6810, 8.1420 looks on a black background.

Color Contrast Check

Large Text (above 18pt) WCAG AA ✓ Pass

Any Text WCAG AA ✓ Pass

Large Text (above 18pt) WCAG AAA ✓ Pass

Any Text WCAG AAA ✓ Pass

If you want to check with other color combinations, try the [Color Contrast Checker](#).

HunterLab 72.4579, 8.6810, 8.1420 Background



This preview shows how black text looks on a background with the HunterLab color 72.4579, 8.6810, 8.1420.



This preview shows how white text looks on a background with the HunterLab color 72.4579, 8.6810,

8.1420.

Color Blindness Simulation

Color vision deficiency is a very complex topic, and I could not describe the different causes any better than Wikipedia does, so if you want to learn more, you should check out their [article about color blindness](#).

Dichromacy



Original Color

72.4579, 8.6810, 8.1420

Protanopia

72.5157, -2.9261, 6.1934

Deuteranopia

72.3968, 5.5291, 8.0182



Tritanopia

72.4689, 12.3419, 2.6305

Trichromacy



Original Color

72.4579, 8.6810, 8.1420

Protanomaly

72.4505, 1.3833, 6.6519

Deuteranomaly

72.3179, 6.7465, 7.9509

Tritanomaly

72.5187, 10.8112, 4.5762

Monochromacy



Original Color

72.4579, 8.6810, 8.1420

Achromatopsia

73.4493, -3.9191, 3.9906

Achromatomaly

72.9665, 0.3404, 5.3833

CSS Examples

Text

The CSS property to change the color of the text to HunterLab 72.4579, 8.6810, 8.1420 is called "color". The color property can be set on classes, ids or directly on the HTML element.

This example shows how text in the color `rgb(220, 183, 183)` looks like.

```
.text, #text, p{  
    color:rgb(220, 183, 183)  
}
```

If you want to add a text shadow in that color use the text-shadow property, you can generate a text shadow directly with our [CSS Text Shadow Generator](#).

Here you see how black text with a 4 pixel rgb(220, 183, 183) colored shadow looks like.

```
.shadow{ text-shadow: 4px 4px 2px rgb(220, 183, 183) }
```

Border

The CSS property to change the border of an element to HunterLab 72.4579, 8.6810, 8.1420 is called "border".

The border property can be set on classes, ids or directly on the HTML element.

This example shows the color as border, it can be applied via the CSS property "border" or "border-color".

```
.border, #border, table{ border:4px solid rgb(220, 183, 183) }
```


If only the border color should be changed use the property `border-color`.

```
.border{ border-color:rgb(220, 183, 183) }
```

If you want to add a box shadow in that color use:

Here you see how a box with a 4 pixel `rgb(220, 183, 183)` colored shadow looks like.

```
.boxshadow{ -moz-box-shadow:4px 4px 4px  
4px rgb(220, 183, 183); -webkit-box-  
shadow:4px 4px 4px 4px rgb(220, 183, 183);  
box-shadow:4px 4px 4px 4px rgb(220, 183,  
183) }
```

Background

The CSS property to change the background color of an element to HunterLab 72.4579, 8.6810, 8.1420 is called "background". The background property can be set on classes, ids or directly on the HTML element.

```
.background, #background, body{  
background: rgb(220, 183, 183) }
```

If only the background color should be changed can be used:

```
.background{ background-color: rgb(220,  
183, 183) }
```

This example shows the color as background, it is applied via the CSS property "background".

To optimize and compress your CSS code, you can use our [online CSS compressor and optimizer](#) based on csstidy. If you want to create a linear or radial gradient as background or border, check our [CSS Gradient Generator](#).

Hey! You found this booklet interesting? Support Converting Colors with the new Membership Option!

The pro membership hides all ads, plus gives you double the colors in the color bucket, and more awesome pro features!

[Learn more, Memberships starting at \\$2.50/m!](#)

**Follow me
on Twitter!**

@ConvertingColor