

Converting Colors

HunterLab(72.5702, 8.2081,
13.7088)

Have a look what the booklet for
HunterLab(72.5702, 8.2081,
13.7088) contains.

HunterLab(72.5373, 8.2309, 13.7564)	3
<i>Conversions</i>	4
<i>Details</i>	6
<i>Harmonies</i>	12
<i>Previews</i>	24
<i>Color Blindness Simulation</i>	28
<i>CSS Examples</i>	31

Color

**HunterLab(72.5373, 8.2309,
13.7564)**

Conversions

Conversions Part 1

Format	Color
Hex	E0B7AA
RGB	224, 183, 170
RGB Percent	88%, 72%, 67%
CMY	0.1216, 0.2823, 0.3333
CMYK	0.00, 0.18, 0.24, 0.12
HSL	14°, 47%, 77%
HSV	14°, 24%, 88%
XYZ	54.9297, 52.6166, 45.2911
YIQ	193.7770, 28.6090, 4.6490

Conversions

Conversions Part 2

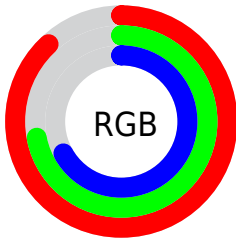
Format	Color
RYB	224, 187, 170
Decimal	14727082
CIELab	77.65, 12.82, 12.17
CIElCh	78, 17.675, 43.503
Yxy	52.6190, 0.3594, 0.3443
Android (android.graphics.Color)	4292917162 (0xFFE0B7AA)
YUV	193.7770, -11.7221, 26.5056
Hunter-Lab	72.5373, 8.2309, 13.7564

Details

The HunterLab color $72.5373, 8.2309, 13.7564$ is a light color, and the websafe version is hex `FFCCCC`. A complement of this color would be $77.7912, -13.7730, -6.0557$, and the grayscale version is $73.3957, -3.9162, 3.9877$.

A 20% lighter version of the original color is $94.0368, -1.8948, 12.9989$, and $50.5946, 8.1319, 11.2333$ is the 20% darker color. If you saturate the color by 10%, you get $67.2647, 14.1507, 17.1461$, and if you desaturate by 10%, it is $78.0927, 2.6687, 10.1278$.

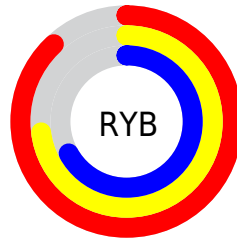
Distribution



Red (88%)

Green (72%)

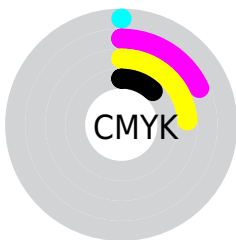
Blue (67%)



Red (88%)

Yellow (73%)

Blue (67%)

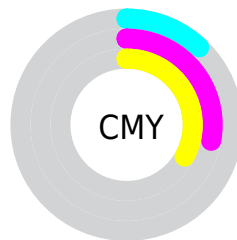


Cyan (0%)

Magenta (18%)

Yellow (24%)

Black (12%)



Cyan (12%)


Magenta (28%)

Yellow (33%)

Brightness & Saturation Gradients

These gradients show how the HunterLab color 72.5373, 8.2309, 13.7564 changes by changing the brightness by 10 percent. The first figure shows a shift by +10% for each color and the second figure -10%.


Similar to the brightness gradients but the following saturation gradients show a change of the HunterLab color 72.5373, 8.2309, 13.7564 by changing the saturation by 10% instead.

 72.5373, 8.2309,
13.7564

 72.5373, 8.2309,
13.7564

199.2038, 6.0489,
25.1062

 61.2362, 8.2107,
12.5185


 96.9760, 8.0794,
16.2321

 50.5904, 8.1226,
11.2714


110.0529, 7.9230,
17.4743

 40.6449, 7.9553,
10.0083


123.6699, 7.7173,
18.7228

 31.4530, 7.6967,
8.7172

137.8064, 7.4656,
19.9794

 23.0825, 7.3308,
7.3786

152.4438, 7.1707,
21.2452

 15.6236, 6.8343,
5.9586

167.5657, 6.8349,

 9.2024, 6.1860,

22.5211

5.9817

183.1569, 6.4603,
23.8079

0.0000, INF, NaN

0.0000, NaN, NaN

■ 72.5373, 8.2309,
13.7564

■ 72.5373, 8.2309,
13.7564

■ 67.2647, 14.1507,
17.1461

■ 78.0927, 2.6687,
10.1278

■ 62.3108, 20.4443,
20.2279

■ 83.8915, -2.5529,
6.3066

■ 57.7254, 27.0873,
22.9182

■ 89.9066, -7.4684,
2.3308

■ 53.5632, 34.0072,
25.1136

■ 95.9579, -12.9789,
0.4459

■ 49.8839, 41.0569,

■ 97.2560, -15.0171,

26.6991

1.9903

■ 46.7472, 47.9929,
27.5690

■ 44.2040, 54.4708,
27.6720

■ 42.9890, 57.8780,
27.5029

Harmonies

Analogous

The Analogous color harmony consists of three colors that are next to each other on the color wheel.



72.5390, 12.5243, 7.4484



72.5373, 8.2309, 13.7564



72.5390, 0.7737, 17.2008

Triad

The Triadic color harmony groups three colors that are evenly spaced from another and form a triangle on the color wheel.



72.5390, 8.2284, 13.7575



72.5390, -18.7339, 8.1812



72.5390, -0.0608, -12.6536

Complementary

The Complementary color scheme is a pair of colors which are on the opposite of each other on the color wheel.



72.5373, 8.2309, 13.7564



77.7912, -13.7730, -6.0557

Split Complementary

Split-complementary colors differ from the complementary color scheme. The scheme consists of three colors, the original color and two neighbors of the complement color.



72.5390, -8.4083, -12.3994



72.5373, 8.2309, 13.7564



72.5390, -18.9344, 0.2650

Square

The Square scheme is like the rectangle color scheme, but the four colors are evenly spaced on the color wheel.



72.5390, 8.2284, 13.7575



72.5390, -14.6714, 14.2412



72.5390, -15.2322, -7.4561



72.5390, 7.5935, -8.1156

Rectangle

The Rectangle color scheme consists of four colors that form a rectangle on the color wheel.



72.5373, 8.2309, 13.7564



72.5390, -4.8596, 17.6826



72.5390, -15.2322, -7.4561



72.5390, -2.8839, -13.1401

Sweetspot

The Sweet Spot groups the original color and five complimentary colors.



72.5390, 8.2284, 13.7575



95.1629, -1.2151, 8.6278



70.2286, 21.7830, -8.5957



43.8365, -0.3939, 4.1171

0.0000, NaN, NaN



46.2646, -2.4686, 2.5136

Same Dimension

The Same Dimension uses a secret algorithm to generate beautiful new colors.



72.5390, 8.2284, 13.7575



80.8580, 12.9769, 17.9765



80.4027, -5.4033, 21.4047



37.7277, 0.0909, 3.9088



33.0254, 43.4638, 21.1110



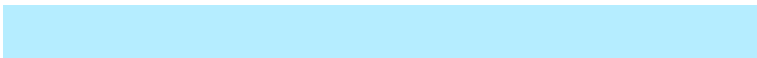
9.4569, 9.2664, 5.9896

Inverse Universe

The Inverse Universe completely reimagines the original color for something new.



77.7912, -13.7730, -6.0557



88.1640, -17.7104, -9.6072



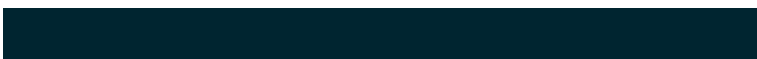
69.5528, -0.4388, -17.2652



38.7088, -4.0008, 0.2129



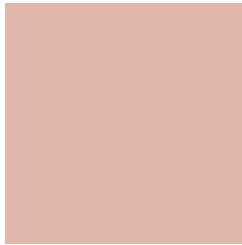
44.7952, -13.4463, -26.9635



12.3562, -4.3219, -6.1145

Previews

White Background



This preview shows how the HunterLab color 72.5373, 8.2309, 13.7564 looks on a white background.

Color Contrast Check

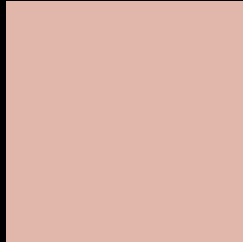
Large Text (above 18pt) WCAG AA × Fail

Any Text WCAG AA × Fail

Large Text (above 18pt) WCAG AAA × Fail

Any Text WCAG AAA × Fail

Black Background



This preview shows how the HunterLab color 72.5373, 8.2309, 13.7564 looks on a black background.

Color Contrast Check

Large Text (above 18pt) WCAG AA ✓ Pass

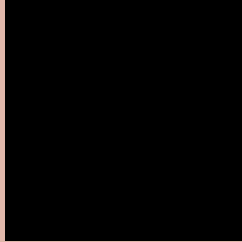
Any Text WCAG AA ✓ Pass

Large Text (above 18pt) WCAG AAA ✓ Pass

Any Text WCAG AAA ✓ Pass

If you want to check with other color combinations, try the [Color Contrast Checker](#).

HunterLab 72.5373, 8.2309, 13.7564 Background



This preview shows how black text looks on a background with the HunterLab color 72.5373, 8.2309, 13.7564.



This preview shows how white text looks on a background with the HunterLab color 72.5373, 8.2309,

13.7564.

Color Blindness Simulation

Color vision deficiency is a very complex topic, and I could not describe the different causes any better than Wikipedia does, so if you want to learn more, you should check out their [article about color blindness](#).

Dichromacy



Original Color

72.5373, 8.2309, 13.7564

Protanopia

72.5238, -3.6315, 11.8879

Deuteranopia

72.5674, 5.3878, 13.7381



Tritanopia

72.6799, 14.3369, 3.8788

Trichromacy



Original Color

72.5373, 8.2309, 13.7564

Protanomaly

72.4837, 0.7679, 12.3387

Deuteranomaly

72.4951, 6.6236, 13.6842

Tritanomaly

72.6080, 12.1919, 7.4742

Monochromacy



Original Color

72.5373, 8.2309, 13.7564

Achromatopsia

73.4493, -3.9191, 3.9906

Achromatomaly

73.0129, 0.2046, 7.7216

CSS Examples

Text

The CSS property to change the color of the text to HunterLab 72.5373, 8.2309, 13.7564 is called "color". The color property can be set on classes, ids or directly on the HTML element.

This example shows how text in the color `rgb(224, 183, 170)` looks like.

```
.text, #text, p{  
    color:rgb(224, 183, 170)  
}
```

If you want to add a text shadow in that color use the text-shadow property, you can generate a text shadow directly with our [CSS Text Shadow Generator](#).

Here you see how black text with a 4 pixel rgb(224, 183, 170) colored shadow looks like.

```
.shadow{ text-shadow: 4px 4px 2px rgb(224, 183, 170) }
```

Border

The CSS property to change the border of an element to HunterLab 72.5373, 8.2309, 13.7564 is called "border". The border property can be set on classes, ids or directly on the HTML element.

This example shows the color as border, it can be applied via the CSS property "border" or "border-color".

```
.border, #border, table{ border:4px solid rgb(224, 183, 170) }
```


If only the border color should be changed use the property `border-color`.

```
.border{ border-color:rgb(224, 183, 170) }
```

If you want to add a box shadow in that color use:

Here you see how a box with a 4 pixel `rgb(224, 183, 170)` colored shadow looks like.

```
.boxshadow{ -moz-box-shadow:4px 4px 4px 4px rgb(224, 183, 170); -webkit-box-shadow:4px 4px 4px 4px rgb(224, 183, 170); box-shadow:4px 4px 4px 4px rgb(224, 183, 170) }
```

Background

The CSS property to change the background color of an element to HunterLab 72.5373, 8.2309, 13.7564 is called "background". The background property can be set on classes, ids or directly on the HTML element.

```
.background, #background, body{  
background: rgb(224, 183, 170) }
```

If only the background color should be changed can be used:

```
.background{ background-color: rgb(224,  
183, 170) }
```

This example shows the color as background, it is applied via the CSS property "background".

To optimize and compress your CSS code, you can use our [online CSS compressor and optimizer](#) based on csstidy. If you want to create a linear or radial gradient as background or border, check our [CSS Gradient Generator](#).

Hey! You found this booklet interesting? Support Converting Colors with the new Membership Option!

The pro membership hides all ads, plus gives you double the colors in the color bucket, and more awesome pro features!

[Learn more, Memberships starting at \\$2.50/m!](#)

**Follow me
on Twitter!**

@ConvertingColor