

Converting Colors

HunterLab(72.6258, 3.4281,
7.3409)

Have a look what the booklet for
HunterLab(72.6258, 3.4281, 7.3409)
contains.

HunterLab(72.6258, 3.4281, 7.3409)	3
<i>Conversions</i>	4
<i>Details</i>	6
<i>Harmonies</i>	12
<i>Previews</i>	24
<i>Color Blindness Simulation</i>	28
<i>CSS Examples</i>	31

Color

**HunterLab(72.6258, 3.4281,
7.3409)**

Conversions

Conversions Part 1

Format	Color
Hex	D2BBB9
RGB	210, 187, 185
RGB Percent	82%, 73%, 73%
CMY	0.1765, 0.2666, 0.2745
CMYK	0.00, 0.11, 0.12, 0.18
HSL	5°, 22%, 77%
HSV	5°, 12%, 82%
XYZ	53.1056, 52.7451, 53.2808
YIQ	193.6490, 14.3500, 4.2540

Conversions

Conversions Part 2

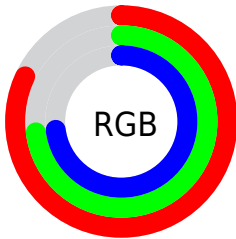
Format	Color
R _Y B	210, 187, 185
Decimal	13810617
CIE Lab	77.73, 7.83, 3.99
CIE LCh	78, 8.789, 27.006
Yxy	52.7474, 0.3337, 0.3315
Android (android.graphics.Color)	4292000697 (0xFFD2BBB9)
YUV	193.6490, -4.2640, 14.3398
Hunter-Lab	72.6258, 3.4281, 7.3409

Details

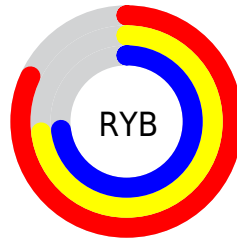
The HunterLab color $72.6258, 3.4281, 7.3409$ is a light color, and the websafe version is hex `CCCCCC`. A complement of this color would be $77.5100, -10.8329, 0.9311$, and the grayscale version is $73.3151, -3.9119, 3.9834$.

A 20% lighter version of the original color is $95.7664, -1.3905, 7.4647$, and $50.6801, 3.6152, 5.7537$ is the 20% darker color. If you saturate the color by 10%, you get $66.5375, 10.2489, 9.8827$, and if you desaturate by 10%, it is $79.0290, -3.0785, 4.8349$.

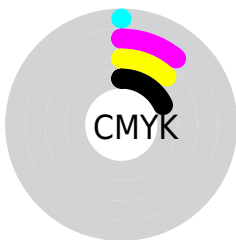
Distribution



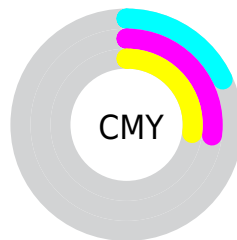
- Red (82%)
- Green (73%)
- Blue (73%)



- Red (82%)
- Yellow (73%)
- Blue (73%)



- Cyan (0%)
- Magenta (11%)
- Yellow (12%)
- Black (18%)




- Cyan (18%)
- Magenta (27%)
- Yellow (27%)

Brightness & Saturation Gradients


These gradients show how the HunterLab color 72.6258, 3.4281, 7.3409 changes by changing the brightness by 10 percent. The first figure shows a shift by +10% for each color and the second figure -10%.


Similar to the brightness gradients but the following saturation gradients show a change of the HunterLab color 72.6258, 3.4281, 7.3409 by changing the saturation by 10% instead.


 72.6258, 3.4281,
7.3409

 72.6258, 3.4281,
7.3409

199.3277, -0.5147,
15.6526

 61.3198, 3.6451,
6.5312


 97.0735, 2.8348,
9.0332

 50.6688, 3.8066,
5.7433

110.1546, 2.4706,
9.9131

 40.7178, 3.9036,
4.9780

123.7756, 2.0646,
10.8155

 31.5199, 3.9270,
4.2341

137.9159, 1.6194,
11.7400

 23.1429, 3.8642,
3.5091

152.5571, 1.1372,
12.6864

 15.6766, 3.6966,
2.7974

167.6826, 0.6197,

 9.2481, 3.4013,

13.6542

2.2922

183.2774, 0.0686,
14.6430

0.0000, NaN, NaN

0.0000, NaN, NaN

■ 72.6258, 3.4281,
7.3409

■ 72.6258, 3.4281,
7.3409

■ 66.5375, 10.2489,
9.8827

■ 79.0290, -3.0785,
4.8349

■ 60.8124, 17.4018,
12.4405

■ 85.6997, -9.2940,
2.3666

■ 55.5174, 24.8584,
14.9808

■ 92.6052, -15.2556,
-0.0632

■ 50.7313, 32.5226,
17.4405

■ 96.1466, -19.0120,
0.5713

■ 46.5451, 40.1856,

19.7166

■ 43.0549, 47.4873,
21.6635

■ 40.3469, 53.9189,
23.1108

■ 38.4718, 58.9180,
23.9203

■ 37.5466, 61.5911,
24.2143

Harmonies

Analogous

The Analogous color harmony consists of three colors that are next to each other on the color wheel.



72.6274, 4.3279, 3.5525



72.6258, 3.4281, 7.3409



72.6274, 0.5524, 10.0816

Triad

The Triadic color harmony groups three colors that are evenly spaced from another and form a triangle on the color wheel.



72.6274, 3.4260, 7.3421



72.6274, -10.5020, 7.9972



72.6274, -4.2987, -4.1091

Complementary

The Complementary color scheme is a pair of colors which are on the opposite of each other on the color wheel.



72.6258, 3.4281, 7.3409



77.5100, -10.8329, 0.9311

Split Complementary

Split-complementary colors differ from the complementary color scheme. The scheme consists of three colors, the original color and two neighbors of the complement color.



72.6274, -8.2069, -2.7604



72.6258, 3.4281, 7.3409



72.6274, -11.7371, 4.3518

Square

The Square scheme is like the rectangle color scheme, but the four colors are evenly spaced on the color wheel.



72.6274, 3.4260, 7.3421



72.6274, -7.4950, 10.4445



72.6274, -10.9064, 0.3929



72.6274, -0.1911, -3.1985

Rectangle

The Rectangle color scheme consists of four colors that form a rectangle on the color wheel.



72.6258, 3.4281, 7.3409



72.6274, -2.0619, 11.0197



72.6274, -10.9064, 0.3929



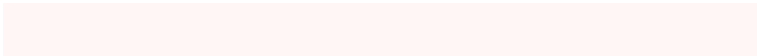
72.6274, -5.6786, -3.9032

Sweetspot

The Sweet Spot groups the original color and five complimentary colors.



72.6274, 3.4260, 7.3421



96.7055, -2.1325, 6.6869



72.7810, 8.3928, -3.7946



44.4566, -0.7048, 3.2032

0.0000, NaN, NaN



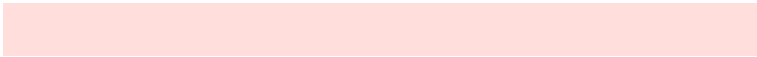
46.2646, -2.4686, 2.5136

Same Dimension

The Same Dimension uses a secret algorithm to generate beautiful new colors.



72.6274, 3.4260, 7.3421



88.7235, 6.1458, 9.8551



76.2422, -2.7888, 11.2372



34.5808, 0.8258, 3.1282



29.4250, 47.7664, 18.9678



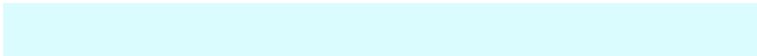
7.3369, 10.0780, 4.6974

Inverse Universe

The Inverse Universe completely reimagines the original color for something new.



77.5100, -10.8329, 0.9311



95.9346, -14.9265, 0.3832



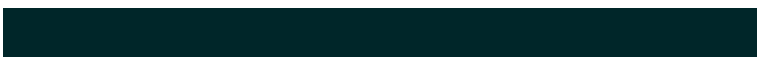
73.7380, -4.7525, -3.6727



36.3843, -4.4381, 0.7609



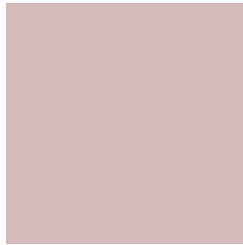
51.2035, -24.1175, -11.9371



12.3087, -5.9518, -2.5367

Previews

White Background



This preview shows how the HunterLab color 72.6258, 3.4281, 7.3409 looks on a white background.

Color Contrast Check

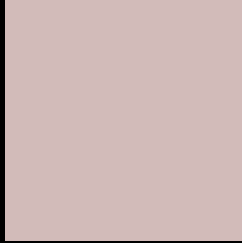
Large Text (above 18pt) WCAG AA × Fail

Any Text WCAG AA × Fail

Large Text (above 18pt) WCAG AAA × Fail

Any Text WCAG AAA × Fail

Black Background



This preview shows how the HunterLab color 72.6258, 3.4281, 7.3409 looks on a black background.

Color Contrast Check

Large Text (above 18pt) WCAG AA ✓ Pass

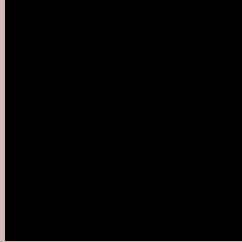
Any Text WCAG AA ✓ Pass

Large Text (above 18pt) WCAG AAA ✓ Pass

Any Text WCAG AAA ✓ Pass

If you want to check with other color combinations, try the [Color Contrast Checker](#).

HunterLab 72.6258, 3.4281, 7.3409 Background



This preview shows how black text looks on a background with the HunterLab color 72.6258, 3.4281, 7.3409.



This preview shows how white text looks on a background with the HunterLab color 72.6258, 3.4281,

7.3409.

Color Blindness Simulation

Color vision deficiency is a very complex topic, and I could not describe the different causes any better than Wikipedia does, so if you want to learn more, you should check out their [article about color blindness](#).

Dichromacy



Original Color

72.6258, 3.4281, 7.3409

Protanopia

72.6084, -2.6050, 6.3052

Deuteranopia

72.6407, 4.9744, 7.3848



Tritanopia

72.6763, 7.4329, 0.8325

Trichromacy



Original Color

72.6258, 3.4281, 7.3409

Protanomaly

72.7521, -0.6313, 6.9600

Deuteranomaly

72.5380, 4.6295, 7.2625

Tritanomaly

72.7061, 5.7332, 3.2805

Monochromacy



Original Color

72.6258, 3.4281, 7.3409

Achromatopsia

73.4493, -3.9191, 3.9906

Achromatomaly

73.0086, -0.9858, 4.9419

CSS Examples

Text

The CSS property to change the color of the text to HunterLab 72.6258, 3.4281, 7.3409 is called "color". The color property can be set on classes, ids or directly on the HTML element.

This example shows how text in the color `rgb(210, 187, 185)` looks like.

```
.text, #text, p{  
    color:rgb(210, 187, 185)  
}
```

If you want to add a text shadow in that color use the text-shadow property, you can generate a text shadow directly with our [CSS Text Shadow Generator](#).

Here you see how black text with a 4 pixel rgb(210, 187, 185) colored shadow looks like.

```
.shadow{ text-shadow: 4px 4px 2px rgb(210, 187, 185) }
```

Border

The CSS property to change the border of an element to HunterLab 72.6258, 3.4281, 7.3409 is called "border". The border property can be set on classes, ids or directly on the HTML element.

This example shows the color as border, it can be applied via the CSS property "border" or "border-color".

```
.border, #border, table{ border:4px solid rgb(210, 187, 185) }
```


If only the border color should be changed use the property `border-color`.

```
.border{ border-color:rgb(210, 187, 185) }
```

If you want to add a box shadow in that color use:

Here you see how a box with a 4 pixel `rgb(210, 187, 185)` colored shadow looks like.

```
.boxshadow{ -moz-box-shadow:4px 4px 4px  
4px rgb(210, 187, 185); -webkit-box-  
shadow:4px 4px 4px 4px rgb(210, 187, 185);  
box-shadow:4px 4px 4px 4px rgb(210, 187,  
185) }
```

Background

The CSS property to change the background color of an element to HunterLab 72.6258, 3.4281, 7.3409 is called "background". The background property can be set on classes, ids or directly on the HTML element.

```
.background, #background, body{  
background: rgb(210, 187, 185) }
```

If only the background color should be changed can be used:

```
.background{ background-color: rgb(210,  
187, 185) }
```

This example shows the color as background, it is applied via the CSS property "background".

To optimize and compress your CSS code, you can use our [online CSS compressor and optimizer](#) based on csstidy. If you want to create a linear or radial gradient as background or border, check our [CSS Gradient Generator](#).

Hey! You found this booklet interesting? Support Converting Colors with the new Membership Option!

The pro membership hides all ads, plus gives you double the colors in the color bucket, and more awesome pro features!

[Learn more, Memberships starting at \\$2.50/m!](#)

**Follow me
on Twitter!**

@ConvertingColor