

# Converting Colors

HunterLab(72.8783, 3.1302,  
20.3977)

Have a look what the booklet for  
HunterLab(72.8783, 3.1302,  
20.3977) contains.

<b>HunterLab(72.9470, 2.8619, 20.5049)</b> .....	3
<b><i>Conversions</i></b> .....	4
<b><i>Details</i></b> .....	6
<b><i>Harmonies</i></b> .....	12
<b><i>Previews</i></b> .....	24
<b><i>Color Blindness Simulation</i></b> .....	28
<b><i>CSS Examples</i></b> .....	31

# Color

**HunterLab(72.9470, 2.8619,  
20.5049)**

# Conversions

## Conversions Part 1

Format	Color
Hex	DDBB99
RGB	221, 187, 153
RGB Percent	87%, 73%, 60%
CMY	0.1333, 0.2666, 0.4000
CMYK	0.00, 0.15, 0.31, 0.13
HSL	30°, 50%, 73%
HSV	30°, 31%, 87%
XYZ	53.3388, 53.2126, 37.5968
YIQ	193.2900, 31.1780, -3.3660

# Conversions

## Conversions Part 2

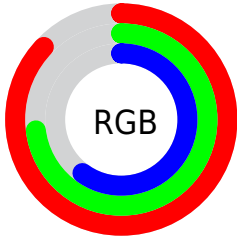
<b>Format</b>	<b>Color</b>
<b>R<sub>Y</sub>B</b>	221, 221, 153
Decimal	14531481
CIE Lab	78.00, 7.24, 21.76
CIE LCh	78, 22.933, 71.591
Yxy	53.2151, 0.3700, 0.3692
Android (android.graphics.Color)	4292721561 (0xFFDDBB99)
YUV	193.2900, -19.8630, 24.3017
Hunter-Lab	72.9470, 2.8619, 20.5049

# Details

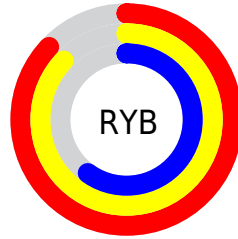
The HunterLab color  $72.9470, 2.8619, 20.5049$  is a light color, and the websafe version is hex  $\text{FFCC99}$ . A complement of this color would be  $68.9434, -6.8406, -16.4655$ , and the grayscale version is  $73.2220, -3.9069, 3.9783$ .

A 20% lighter version of the original color is  $94.7978, -6.6864, 21.3764$ , and  $50.9989, 3.2955, 16.8690$  is the 20% darker color. If you saturate the color by 10%, you get  $69.3123, 5.9896, 24.4768$ , and if you desaturate by 10%, it is  $76.7360, 0.1012, 15.9090$ .

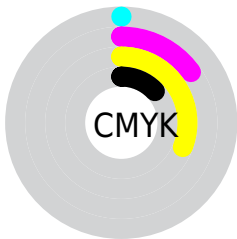
# Distribution



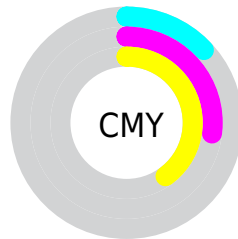
- Red (87%)
- Green (73%)
- Blue (60%)



- Red (87%)
- Yellow (87%)
- Blue (60%)



- Cyan (0%)
- Magenta (15%)
- Yellow (31%)
- Black (13%)




- Cyan (13%)
- Magenta (27%)
- Yellow (40%)

# Brightness & Saturation Gradients

These gradients show how the HunterLab color 72.9470, 2.8619, 20.5049 changes by changing the brightness by 10 percent. The first figure shows a shift by +10% for each color and the second figure -10%.


Similar to the brightness gradients but the following saturation gradients show a change of the HunterLab color 72.9470, 2.8619, 20.5049 by changing the saturation by 10% instead.



 72.9470, 2.8619,  
20.5049

 72.9470, 2.8619,  
20.5049

199.7773, -1.3006,  
35.6332

 61.6235, 3.1083,  
18.7258

 97.4273, 2.2128,  
23.9644

 50.9538, 3.3013,  
16.8960

 110.5236, 1.8226,  
25.6592

 40.9828, 3.4319,  
14.9985


124.1593, 1.3917,  
27.3389

 31.7633, 3.4915,  
13.0073

138.3136, 0.9224,  
29.0077

 23.3625, 3.4681,  
10.8827

152.9684, 0.4169,  
30.6690

 15.8696, 3.3441,  
8.6852

168.1071, -0.1231,

 9.4119, 3.0908,

32.3256

6.5884

183.7146, -0.6961,  
33.9797

0.0000, NaN, NaN

0.0000, NaN, NaN

■ 72.9470, 2.8619,  
20.5049

■ 72.9470, 2.8619,  
20.5049

■ 69.3123, 5.9896,  
24.4768

■ 76.7360, 0.1012,  
15.9090

■ 65.8402, 9.5100,  
27.7586

■ 80.6622, -2.3070,  
10.7469

■ 62.5463, 13.4306,  
30.2890

■ 84.7161, -4.3898,  
5.0754

■ 59.4454, 17.7491,  
32.0129

■ 88.8879, -6.1721,  
-1.0546

■ 56.5520, 22.4442,

■ 92.8677, -9.3380,

32.8938

-3.3397

■ 53.8791, 27.4680,  
32.9318

■ 96.4521, -15.0240,  
1.0140

■ 51.6096, 32.2943,  
32.3670

■ 97.0114, -15.8939,  
1.6788

# Harmonies

## Analogous

The Analogous color harmony consists of three colors that are next to each other on the color wheel.



72.9487, 12.4952, 16.0334



72.9470, 2.8619, 20.5049



72.9487, -8.0709, 20.9647

# Triad

The Triadic color harmony groups three colors that are evenly spaced from another and form a triangle on the color wheel.



72.9487, 2.8593, 20.5059



72.9487, -23.3620, -0.1612



72.9487, 10.5842, -12.6182

# Complementary

The Complementary color scheme is a pair of colors which are on the opposite of each other on the color wheel.



72.9470, 2.8619, 20.5049



68.9434, -6.8406, -16.4655

# Split Complementary

Split-complementary colors differ from the complementary color scheme. The scheme consists of three colors, the original color and two neighbors of the complement color.



72.9487, 0.3744, -18.4519



72.9470, 2.8619, 20.5049



72.9487, -18.9572, -10.5847

# Square

The Square scheme is like the rectangle color scheme, but the four colors are evenly spaced on the color wheel.



72.9487, 2.8593, 20.5059



72.9487, -22.7839, 10.0058



72.9487, -10.4146, -17.6573



72.9487, 17.1329, -2.6284



# Rectangle

The Rectangle color scheme consists of four colors that form a rectangle on the color wheel.



72.9470, 2.8619, 20.5049



72.9487, -14.5817, 19.0290



72.9487, -10.4146, -17.6573



72.9487, 7.4420, -15.1922

# Sweetspot

The Sweet Spot groups the original color and five complimentary colors.



72.9487, 2.8593, 20.5059



95.6587, -3.1547, 11.5476



64.6089, 25.5709, -2.8844



43.9366, -1.2832, 5.7793

0.0000, NaN, NaN



46.2646, -2.4686, 2.5136



# Same Dimension

The Same Dimension uses a secret algorithm to generate beautiful new colors.



72.9487, 2.8593, 20.5059



82.9762, 5.7147, 27.2520



83.2977, -14.1419, 29.6285



37.5792, -1.2053, 4.6352



39.6229, 23.9448, 24.8346



10.9062, 4.2807, 6.7953

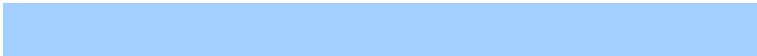


# Inverse Universe

The Inverse Universe completely reimagines the original color for something new.



68.9434, -6.8406, -16.4655



77.3201, -7.9015, -25.0403



58.9711, 10.5512, -32.2541



36.9964, -2.6303, -0.7304



31.3028, 7.7444, -55.8436

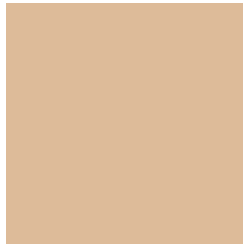


8.9842, 0.1031, -11.4520



# Previews

## White Background



This preview shows how the HunterLab color 72.9470, 2.8619, 20.5049 looks on a white background.

## Color Contrast Check

Large Text (above 18pt) WCAG AA × Fail

Any Text WCAG AA × Fail

Large Text (above 18pt) WCAG AAA × Fail

Any Text WCAG AAA × Fail



# Black Background



This preview shows how the HunterLab color 72.9470, 2.8619, 20.5049 looks on a black background.

## Color Contrast Check

Large Text (above 18pt) WCAG AA ✓ Pass

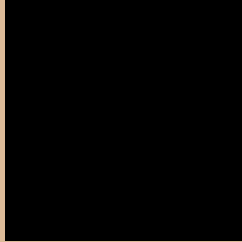
Any Text WCAG AA ✓ Pass

Large Text (above 18pt) WCAG AAA ✓ Pass

Any Text WCAG AAA ✓ Pass

If you want to check with other color combinations, try the [Color Contrast Checker](#).

# HunterLab 72.9470, 2.8619, 20.5049 Background



This preview shows how black text looks on a background with the HunterLab color 72.9470, 2.8619, 20.5049.



This preview shows how white text looks on a background with the HunterLab color 72.9470, 2.8619,



# Color Blindness Simulation

Color vision deficiency is a very complex topic, and I could not describe the different causes any better than Wikipedia does, so if you want to learn more, you should check out their [article about color blindness](#).

## Dichromacy



### Original Color

72.9470, 2.8619, 20.5049

### Protanopia

73.1569, -5.4226, 19.4934

### Deuteranopia

72.8048, 5.3547, 20.4131



## Tritanopia

72.9086, 13.7688, 3.1811

# Trichromacy



## Original Color

72.9470, 2.8619, 20.5049

## Protanomaly

73.1280, -2.4832, 19.8754

## Deuteranomaly

72.9829, 4.4722, 20.5672

## Tritanomaly

72.8077, 9.6645, 9.8698

# Monochromacy



## Original Color

72.9470, 2.8619, 20.5049

## Achromatopsia

73.0258, -3.8965, 3.9676

## Achromatomaly

72.9195, -2.0430, 10.6500

# CSS Examples

## Text

The CSS property to change the color of the text to HunterLab 72.9470, 2.8619, 20.5049 is called "color". The color property can be set on classes, ids or directly on the HTML element.

This example shows how text in the color `rgb(221, 187, 153)` looks like.

```
.text, #text, p{  
    color:rgb(221, 187, 153)  
}
```

If you want to add a text shadow in that color use the text-shadow property, you can generate a text shadow directly with our [CSS Text Shadow Generator](#).

Here you see how black text with a 4 pixel rgb(221, 187, 153) colored shadow looks like.

```
.shadow{ text-shadow: 4px 4px 2px rgb(221, 187, 153) }
```

## Border

The CSS property to change the border of an element to HunterLab 72.9470, 2.8619, 20.5049 is called "border". The border property can be set on classes, ids or directly on the HTML element.

This example shows the color as border, it can be applied via the CSS property "border" or "border-color".

```
.border, #border, table{ border:4px solid rgb(221, 187, 153) }
```



If only the border color should be changed use the property `border-color`.

```
.border{ border-color:rgb(221, 187, 153) }
```

If you want to add a box shadow in that color use:

Here you see how a box with a 4 pixel `rgb(221, 187, 153)` colored shadow looks like.

```
.boxshadow{ -moz-box-shadow:4px 4px 4px  
4px rgb(221, 187, 153); -webkit-box-  
shadow:4px 4px 4px 4px rgb(221, 187, 153);  
box-shadow:4px 4px 4px 4px rgb(221, 187,  
153) }
```

# Background

The CSS property to change the background color of an element to HunterLab 72.9470, 2.8619, 20.5049 is called "background". The background property can be set on classes, ids or directly on the HTML element.

```
.background, #background, body{  
background: rgb(221, 187, 153) }
```

If only the background color should be changed can be used:

```
.background{ background-color: rgb(221,  
187, 153) }
```

This example shows the color as background, it is applied via the CSS property "background".

To optimize and compress your CSS code, you can use our [online CSS compressor and optimizer](#) based on csstidy. If you want to create a linear or radial gradient as background or border, check our [CSS Gradient Generator](#).

Hey! You found this booklet interesting? Support Converting Colors with the new Membership Option!

The pro membership hides all ads, plus gives you double the colors in the color bucket, and more awesome pro features!

**[Learn more, Memberships starting at \\$2.50/m!](#)**

**Follow me  
on Twitter!**

@ConvertingColor